

Figure S1. MS/MS results of the TP2 (a) and other peptides in the Group 2: m/z 1371.9 (b), m/z 1428.9 (c) and m/z 1486.1 (d).

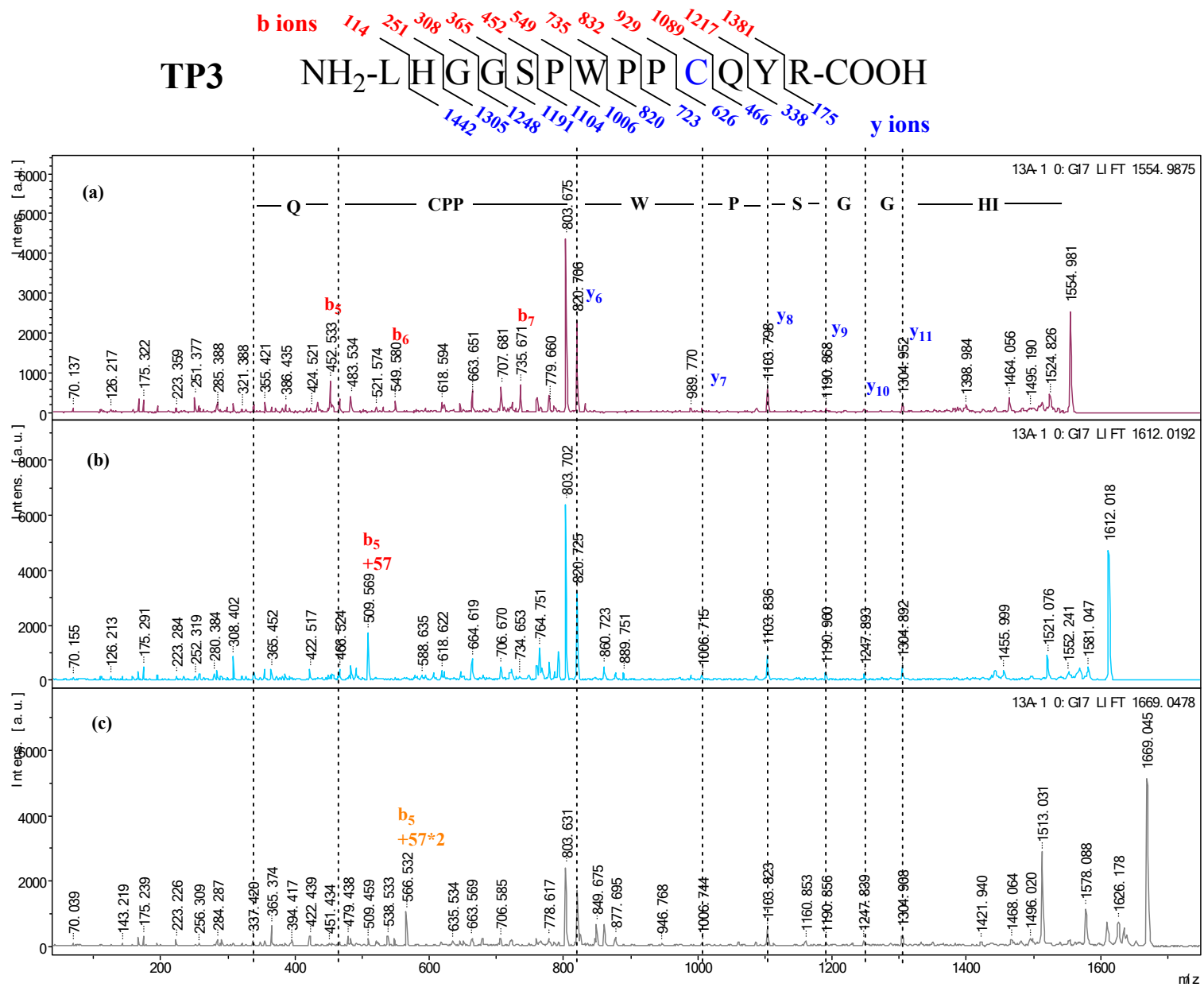


Figure S2. MS/MS results of the TP3 (a) and other peptides in the Group 3: m/z 1612.1 (b) and m/z 1669.1 (c).

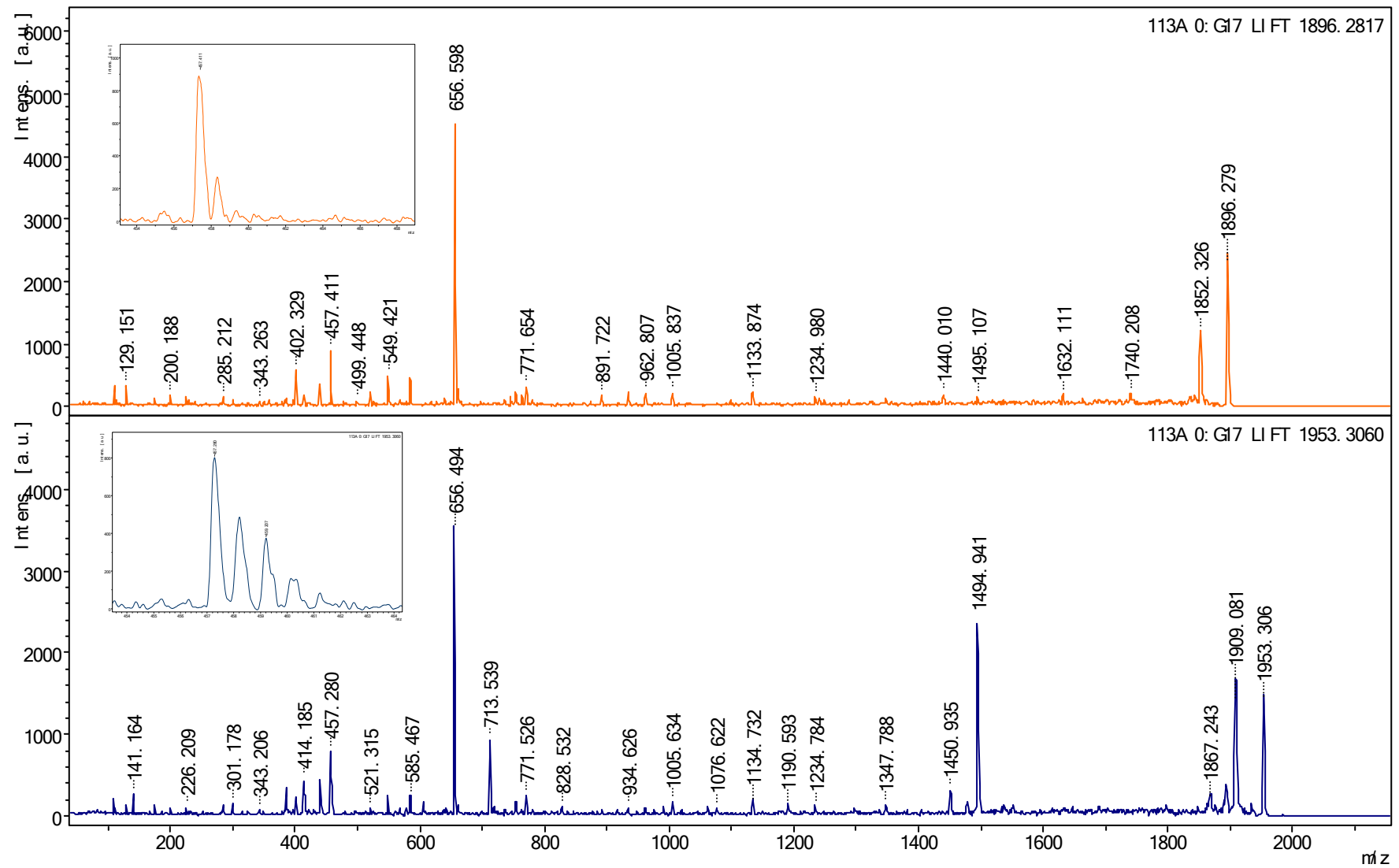


Figure S3. The enlarge MS/MS results of the TP1 (a) and other peptides in the Group 1: m/z 1612.1 (b).

Table S1 The relative standard deviations of each tryptic peptide and its derivatives

Compound	Accurate mass	Observed mass	RSD (ppm)
TP1	1895.941	1896.042	53.27
TP1+IAA*1	1952.993	1953.052	30.21
TP1+IAA*2	2010.045	2010.093	23.88
TP1+IAA*3	2067.097	2067.106	4.35
TP2	1314.692	1314.737	34.23
TP2+IAA*1	1371.744	1371.766	16.04
TP2+IAA*2	1428.796	1428.792	-2.80
TP2+IAA*3	1485.848	1485.818	-20.19
TP3+IAA*1	1554.728	1554.797	44.38
TP3+IAA*2	1611.780	1611.827	29.16
TP3+IAA*3	1668.832	1668.856	14.38
TP3+IAA*4	1725.884	1725.883	-0.58
TP4+IAA*1	2267.161	2267.315	67.93
TP4+IAA*2	2324.213	2324.345	56.79
TP4+IAA*3	2381.265	2381.389	52.07