

## Electronic Supplementary Information

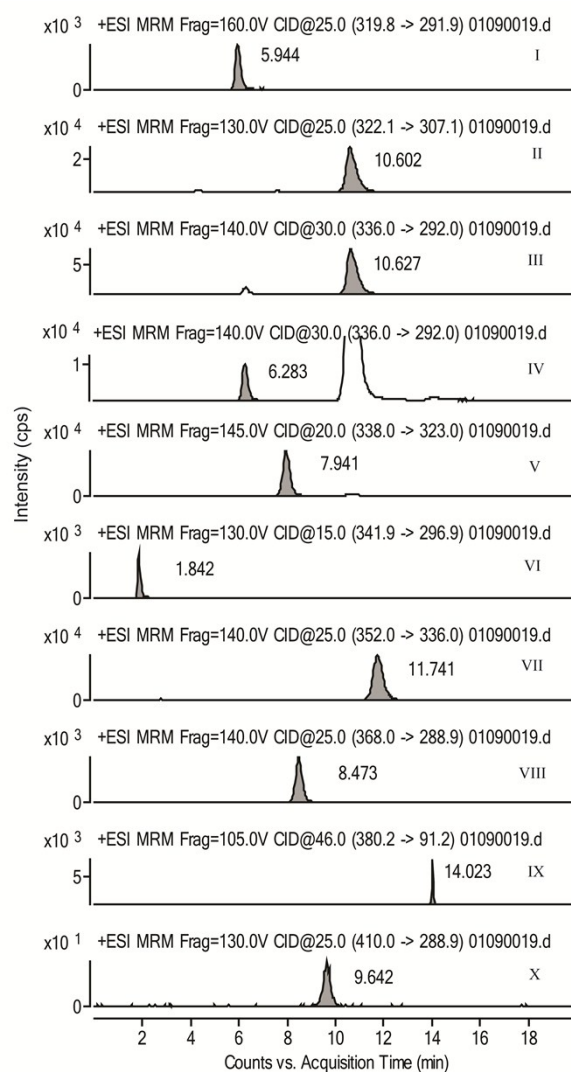


Fig. S1 Representative MRM chromatograms of the nine alkaloids: coptisine (I, 1500 ng mL<sup>-1</sup>), berberrubine (II, 750 ng mL<sup>-1</sup>), berberine (III, 5000 ng mL<sup>-1</sup>), epiberberine (IV, 1500 ng mL<sup>-1</sup>), jatrorrhizine (V, 1500 ng mL<sup>-1</sup>), magnoflorine (VI, 1500 ng mL<sup>-1</sup>), palmatine (VII, 1500 ng mL<sup>-1</sup>), corynoline (VIII, 200 ng mL<sup>-1</sup>), donepezil (IX, internal standard, 0.5 ng mL<sup>-1</sup>) and acetylcorynoline (X, 20 ng mL<sup>-1</sup>).