

Supporting information

Qualitative and quantitative determinations for pyridalyl and metabolites in excrement of two representative Lepidoptera pests

Lingling Wang, Yuting Nie, Yujiao Wang, Zhenyu Wang*, Bo Xiong*

Key Laboratory of Pesticides & Chemical Biology, Ministry of Education, College of Chemistry,
Central China Normal University, 152 Luoyu Road, Wuhan 430079, China

*Corresponding author: E-mail: bx@mail.ccnu.edu.cn. Tel.: +86 (0)2767867961; Fax: +86
(0)2767867962 (Bo Xiong).

Additional Corresponding author: E-mail: zywang@mail.ccnu.edu.cn; Tel.: +86 (0)27 67867983;
Fax: +86 (0)27 67867984 (Zhenyu Wang).

Contents

1. **Fig. S1.** ^1H NMR spectrum of pyridalyl.
2. **Fig. S2.** Culture of pests and metabolic experiments.
3. **Fig. S3.** The calibration curve of pyridalyl.
4. **Fig. S4.** Comparison of four SPE columns.
5. **Fig. S5.** EIC for pyridalyl and metabolites in the excrement of *S. exigua*.

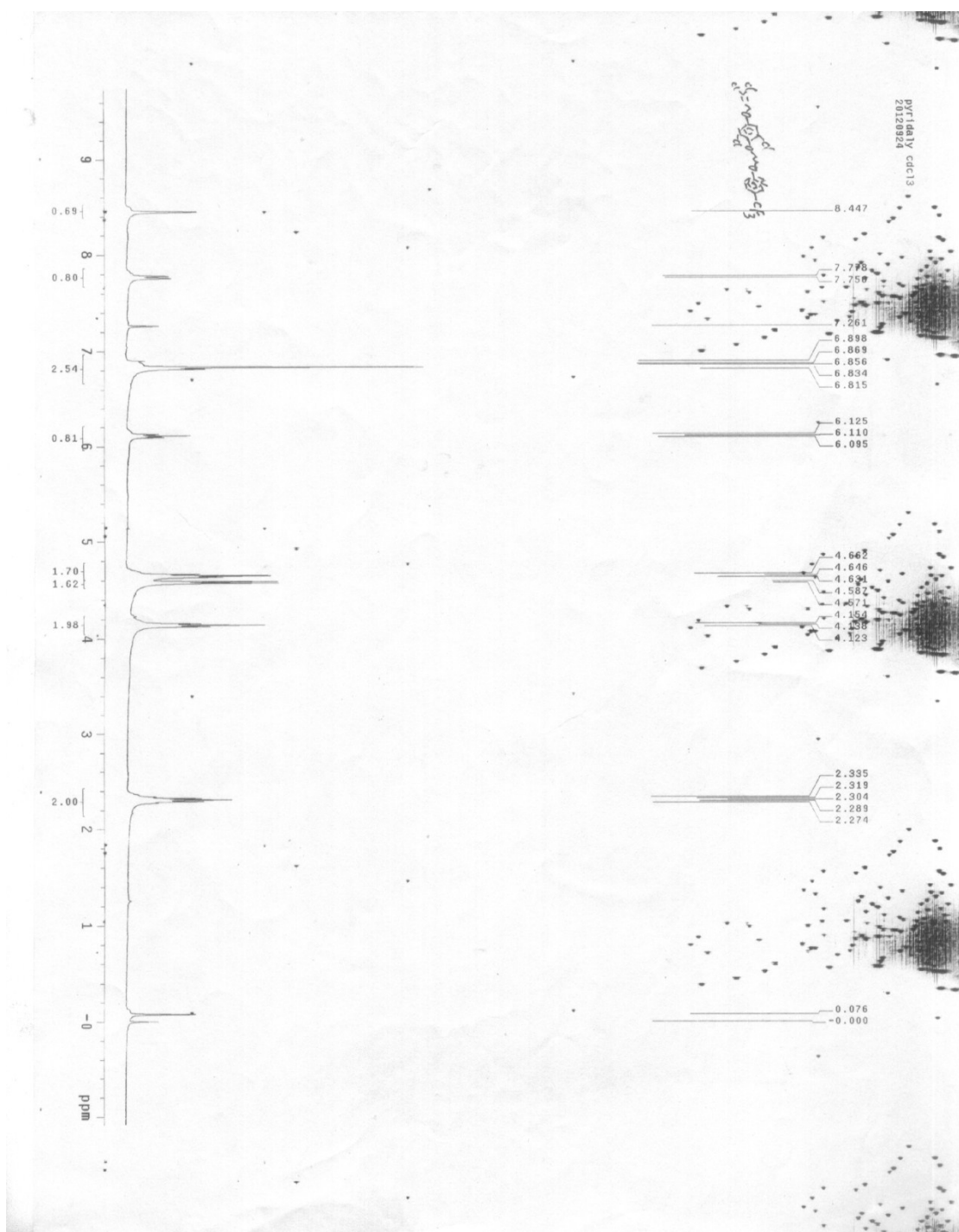


Fig. S1. ^1H NMR spectrum of pyridalyl.

Supporting information

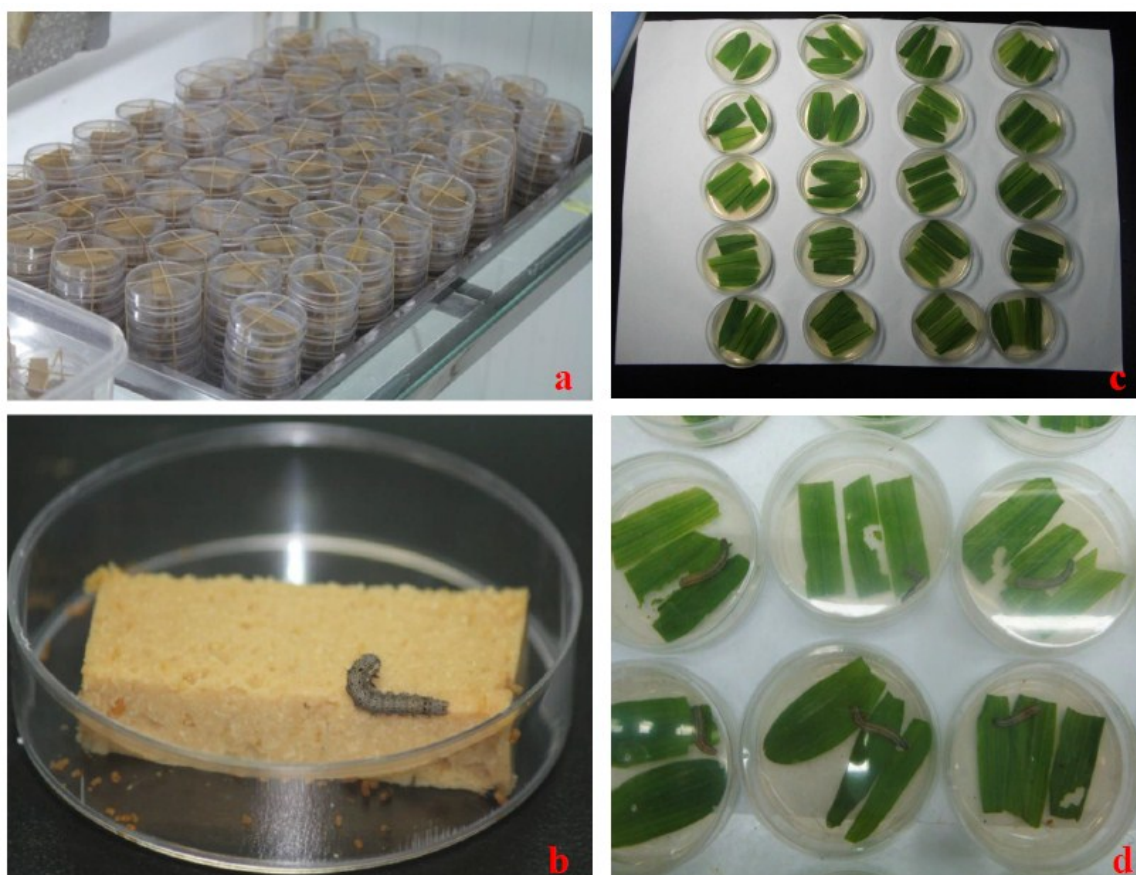


Fig. S2. Culture of pests and metabolic experiments. (a: the environment to culture *H. armigera* and *S. exigua*; b: the 3rd instar larva of *H. armigera*; c: petri dishes with treated leaves and control leaves; d: the metabolic experiment of *S. exigua*.)

Supporting information

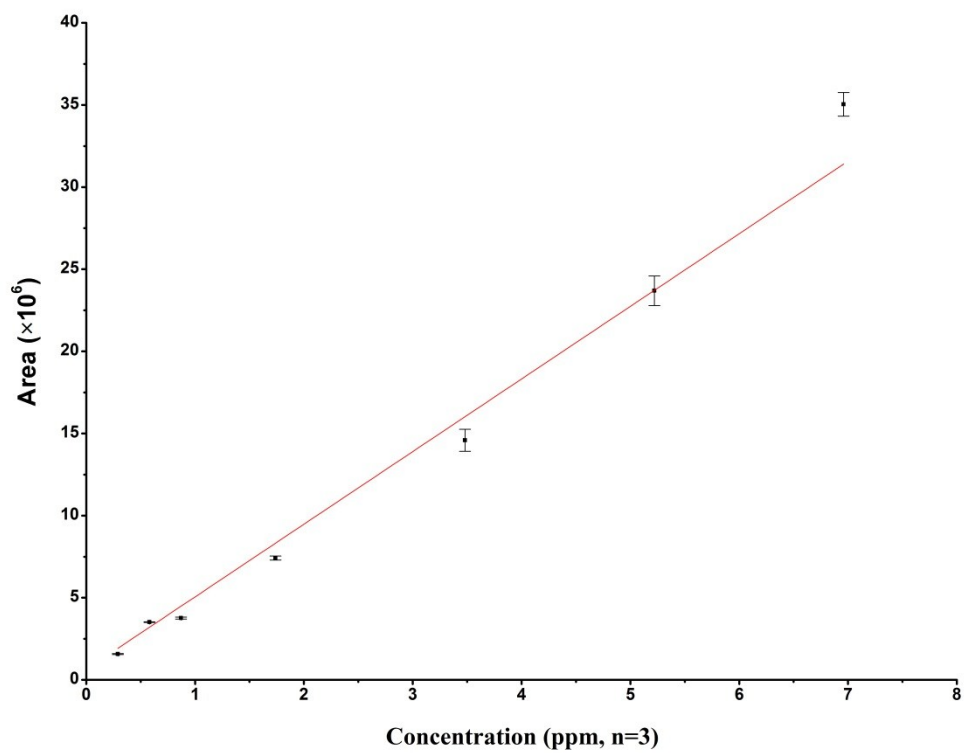


Fig. S3. The calibration curve of pyridalyl.

Supporting information

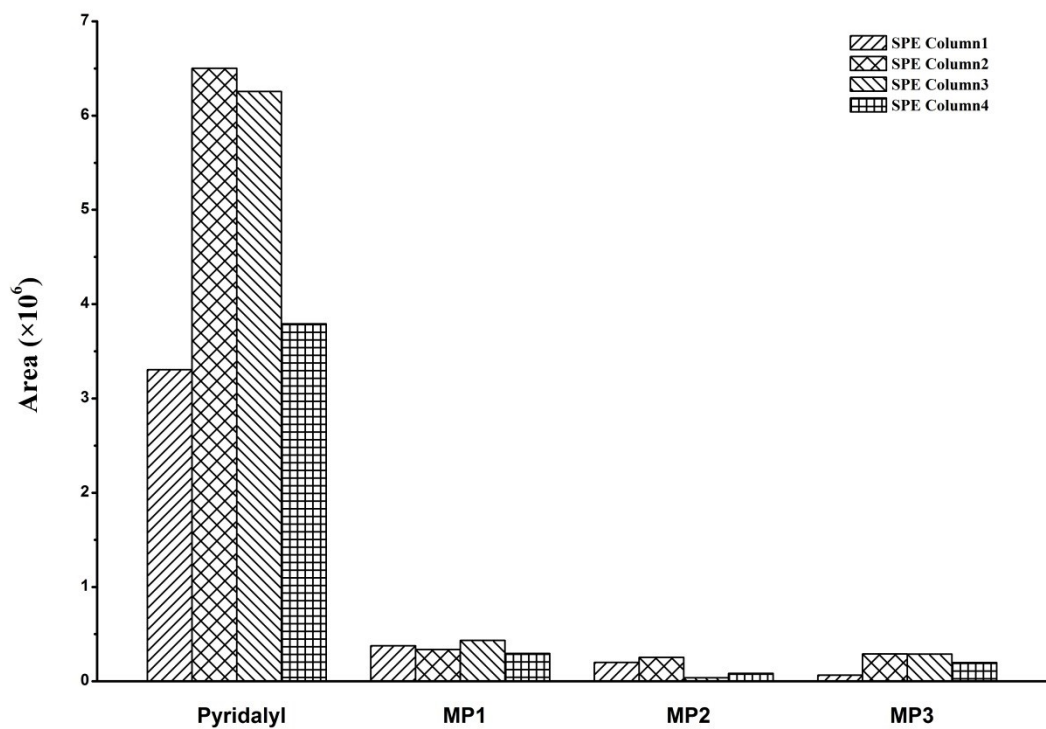


Fig. S4. Comparison of four SPE columns.

Supporting information

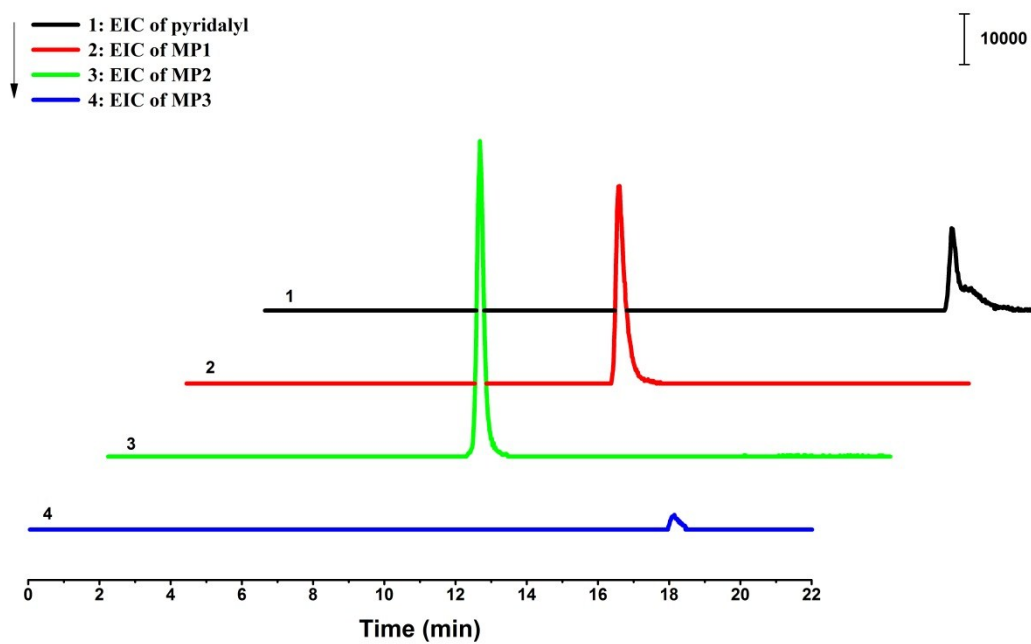


Fig. S5. EIC of pyridalyl and its metabolites in the excrement of *S. exigua*.