

Electronic Supplementary Information

Dual-factor loaded functional silk fibroin scaffolds for peripheral nerve regeneration with the aid of neovascularization

Qiangqiang Liu ^a(Co-first author), Jianwen Huang ^b(Co-first author), Huili Shao ^a, Lujie Song ^{b,*},
Yaopeng Zhang ^{a,*}

^a State Key Laboratory for Modification of Chemical Fibers and Polymer Materials,
College of Materials Science and Engineering, Donghua University, Shanghai 201620, P. R.
China. zyp@dhu.edu.cn; Fax: +86-21-67792955; Tel: +86-21-67792954

^b Department of Urology, Shanghai Jiao Tong University Affiliated Sixth People's
Hospital, Shanghai 200233, P. R. China. E-mail: ljsong@sjtu.edu.cn; Fax: +86-21-64701361; Tel:
+86-21-64369181

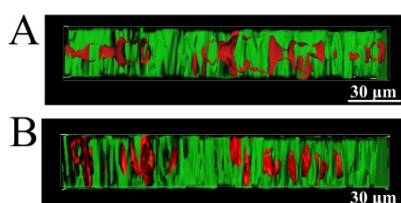


Figure S1 The cross sectional images of 3D cytoskeletal of SCs on (A) bare RSF scaffolds and (B) RSF scaffolds loaded with BDNF and VEGF. The images are the combined images of bright field channel and fluorescent channel of LSCM. The 3D data of bright field images as well as the fluorescent 3D data of rhodamine phalloidin were recorded simultaneously. The cross sectional morphology was obtained by rebuilding the fluorescent cell and silk scaffolds in bright fields from Imaris 6.2 software. Green represents silk fibers while red represents cells.