

## Supporting information

# Photo-cross-linked poly(ether amine) micelles for controlled drug release

Haozhe He,<sup>a</sup> Yanrong Ren,<sup>\*a</sup> Yuge Dou,<sup>a</sup> Tao Ding,<sup>a</sup> Xiaomin Fang,<sup>a</sup> Yuanqing Xu,<sup>a</sup> Hao Xu,<sup>a</sup> Wenkai Zhang,<sup>a</sup> and Zhigang Xie<sup>\*b</sup>

<sup>a</sup> College of Chemistry and Chemical Engineering, Henan University, Kaifeng, 475004, P. R. China. Fax: +86-371-23881586; Tel: +86-371-23881586; E-mail: renyr@henu.edu.cn

<sup>b</sup> State Key Laboratory of Polymer Physics and Chemistry, Changchun Institute of Applied Chemistry, Chinese Academy of Sciences, Changchun, 130022, P. R. China. Fax: +86-431-85262775; Tel: +86-431-85262775; E-mail: xiez@ciac.ac.cn

## NMR of DHMC

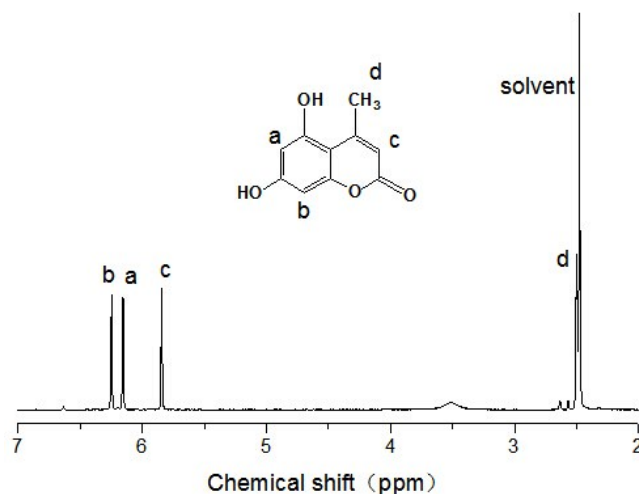
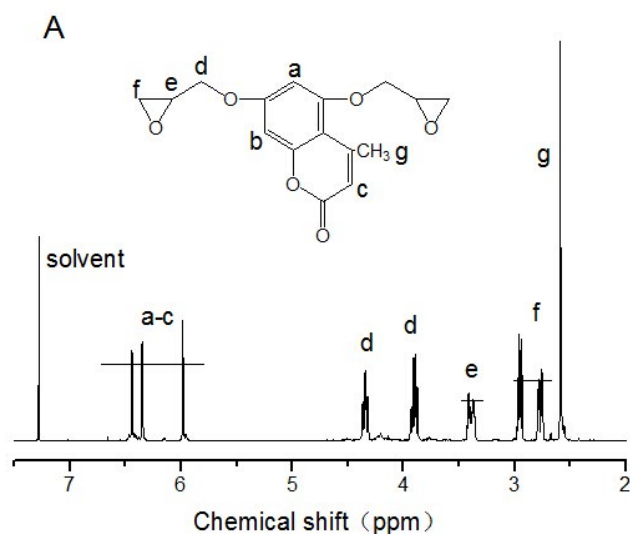
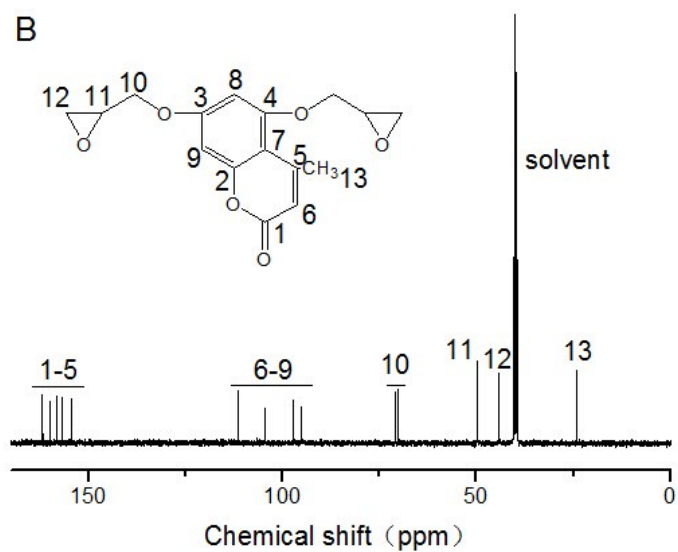


Fig. S1 <sup>1</sup>H-NMR of DHMC in DMSO-d<sub>6</sub>.

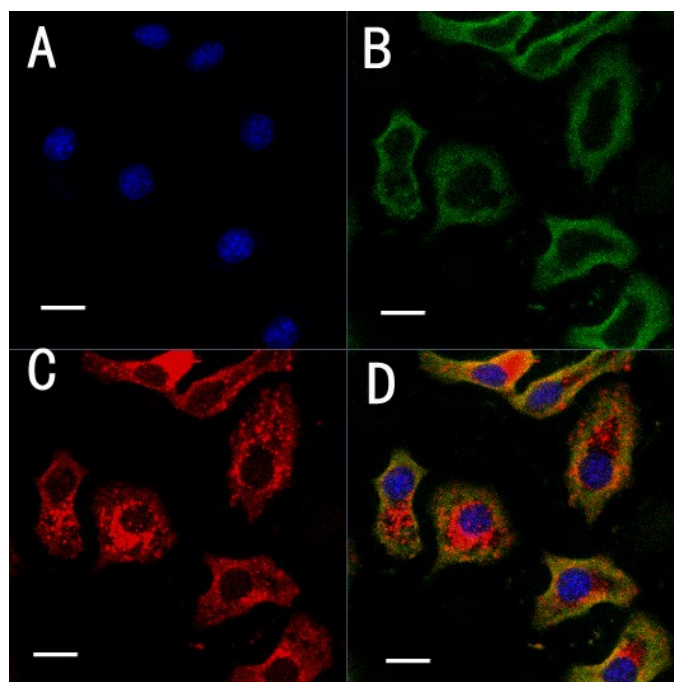
## NMR of DEMC





**Fig. S2**  $^1\text{H}$ -NMR of DEMC in  $\text{CDCl}_3$  (A) and  $^{13}\text{C}$ -NMR of in  $\text{DMSO-d}_6$  (B).

### CLSM of Calcein loaded micelles



**Fig. S3** CLSM images of HepG2 cells incubated with Calcein loaded micelles for 1 h at  $37^\circ\text{C}$  at a concentration of  $10\ \mu\text{M}$ . (A) the cells with nucleus stained with DAPI (blue), (B) with Calcein fluorescence (green), (C) with lysosomes stained with Lyso-Tracker Red (red) and (D) overlapped images. (Bar =  $20\ \mu\text{m}$ )