

Supplementary Data

Ultracentrifugation-based multi-target affinity selection mass spectrometry

Yan Jin¹, Xueheng Cheng², Fengzhi Yang¹, Lei Fu^{1*}

School of Pharmacy, Shanghai Jiao Tong University, No.800 Dongchuan Rd., Shanghai
200240, PR China

* Corresponding author.

E-mail address: leifu@sjtu.edu.cn (L. Fu)

¹ School of Pharmacy, Shanghai JiaoTong University, No.800 Dongchuan Rd., Shanghai
200240, PR China

Tel./Fax: +86 21 3420 4791

² DMPK & Bioanalysis, Viva Biotech Ltd., 334 Aidisheng Rd., Shanghai 201203, China

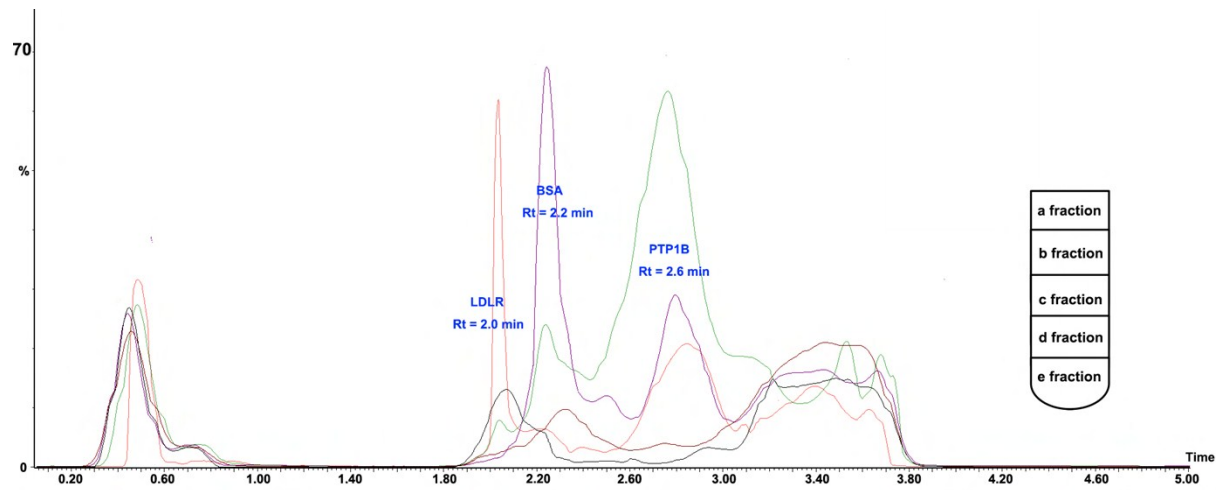


Fig. S1 LC traces of the mixed proteins including LDLR, BSA and PTP1B in the *a* fraction (black line), *b* fraction (red line), *c* fraction (green line), *d* fraction (purple line) and *e* fraction (hazel line) of the tube after 80 min of rate-zonal density gradient centrifugation

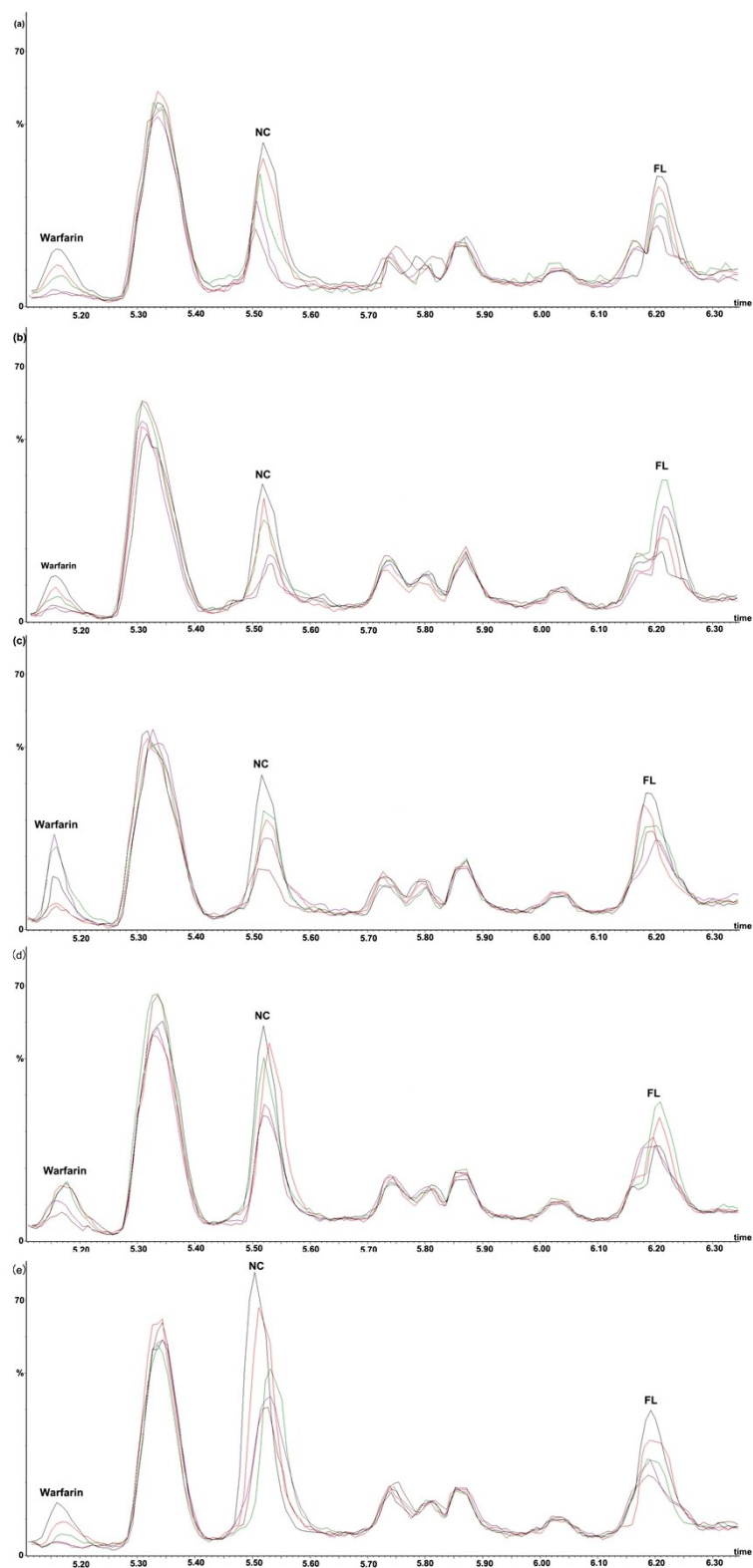


Fig. S2 LC traces of the mixed standard compounds including warfarin, FL and NC, which were treated with (a) LDLR, (b) PTP1B, (c) BSA, (d) the mixture of LDLR, PTP1B and BSA, (e) WOP, in the parallel *a* fractions (black lines), *b* fractions (red lines), *c* fractions (green lines), *d* fractions (purple lines) and *e* fractions (hazel lines) after 80 min of centrifugation. WOP: without protein.