

Supporting Information

Dual Redox-Triggered shell-sheddable micelles self-assembled from mPEGylated starch conjugates for rapid drug release

Mingjia Chen, Chunmei Gao, Shaoyu Lü, Yuanmou Chen, and Mingzhu Liu*

State Key Laboratory of Applied Organic Chemistry, Key Laboratory of Nonferrous Metal Chemistry and Resources Utilization of Gansu Province and Department of Chemistry, Lanzhou University, Lanzhou 730000, PR China

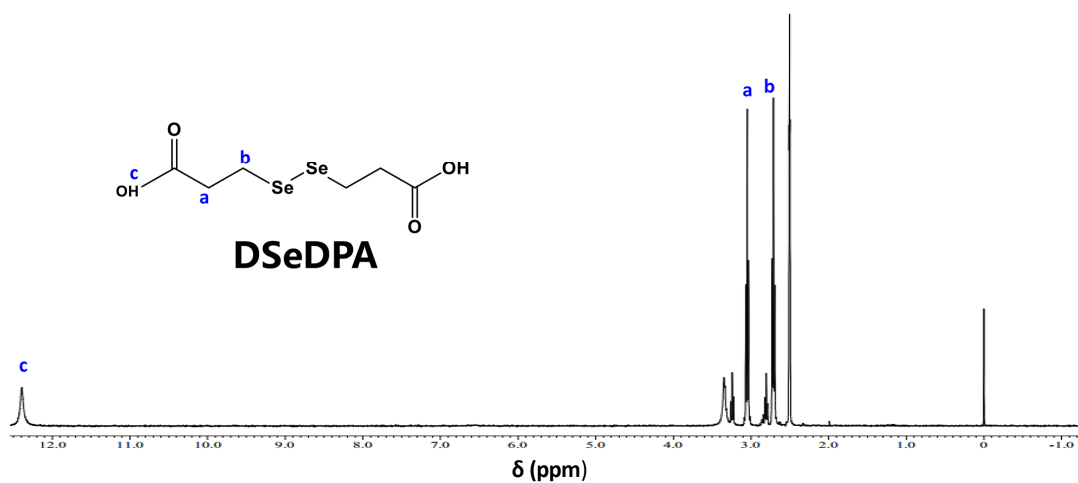


Fig. S1 ^1H NMR spectrum of DSeDPA in DMSO-d_6 .

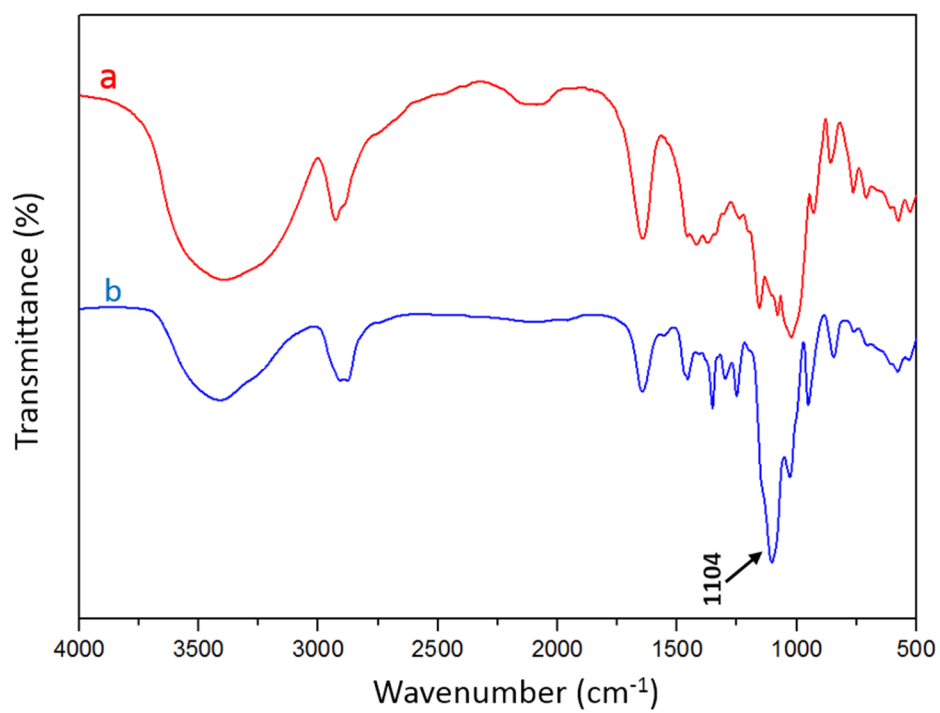


Fig. S2 FTIR spectra of starch (a) and mPEG-SeSe-St (b).

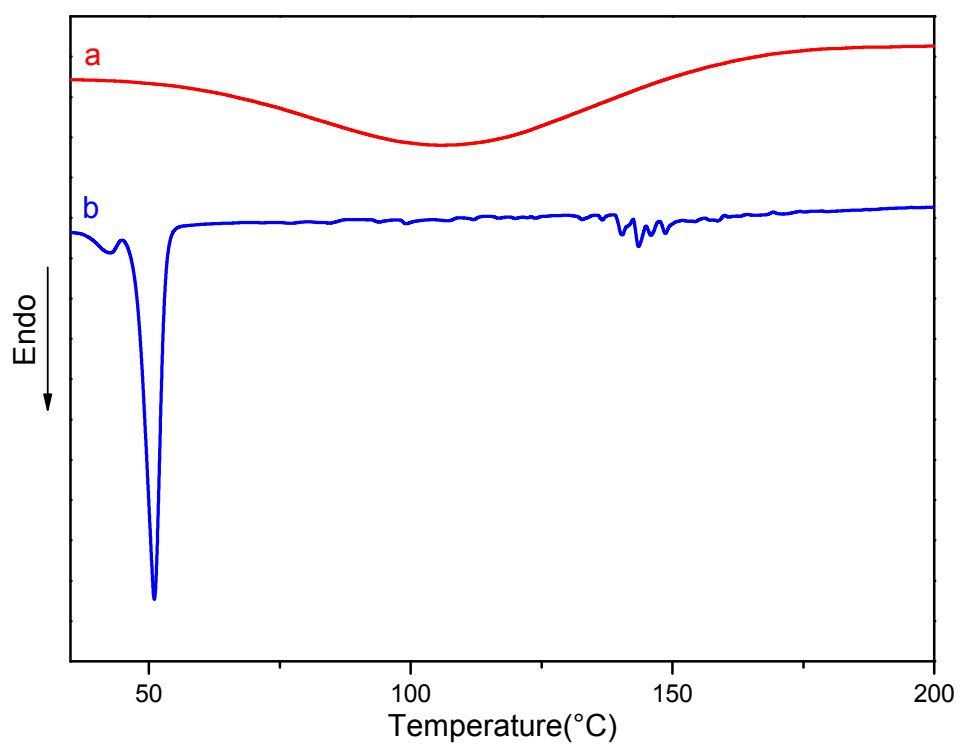


Fig. S3 The DSC curves of starch (a) and mPEG-SeSe-St (b).