

Electronic Supplementary Information (ESI) for

Bendable Graphene/Conducting Polymers Hybrid Films for Freestanding Electrodes with High Volumetric Capacitances

Lu Mao[#], Meng Li[#], Junmin Xue and John Wang^{*}

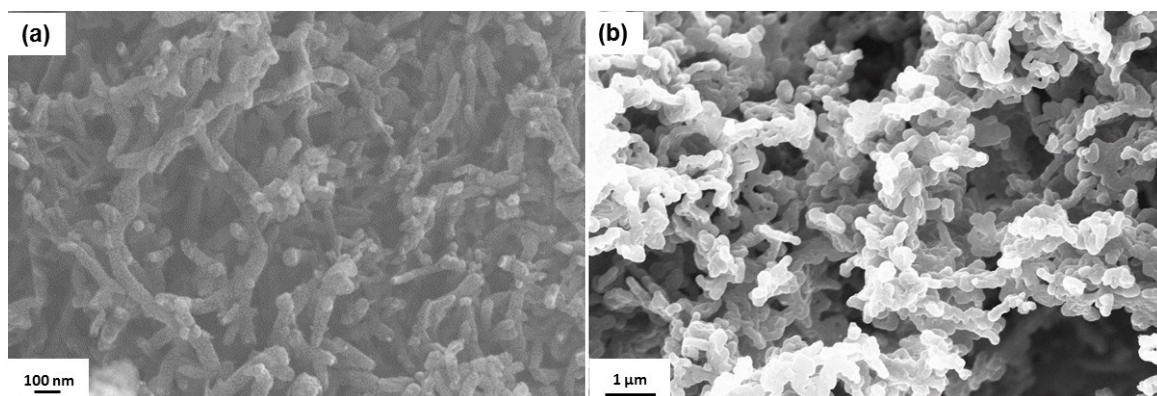


Figure S1. SEM images of PPy (a) and PANI (b).

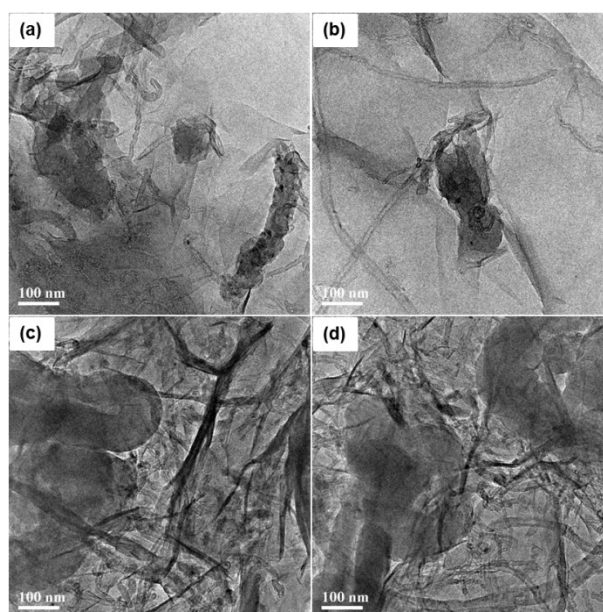


Figure S2. TEM images of RGO/PANI(50%) film (a), RGO/PANI(30%) film (b), RGO/PPy(50%) film (c) and RGO/PPy(30%) film(d).

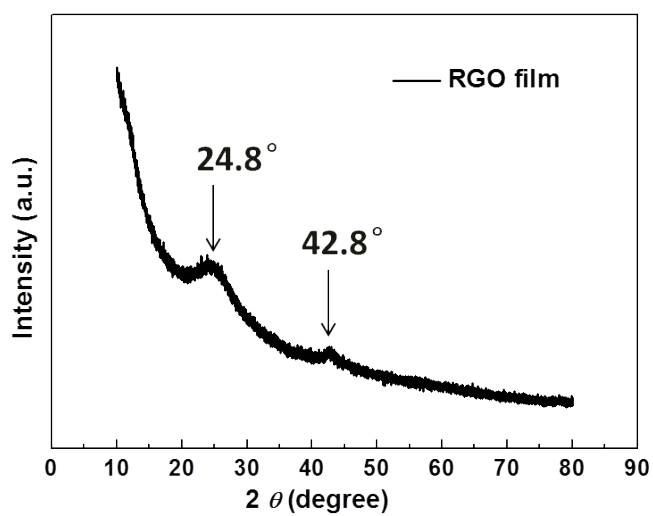


Figure S3. X-ray diffraction pattern of the RGO film.

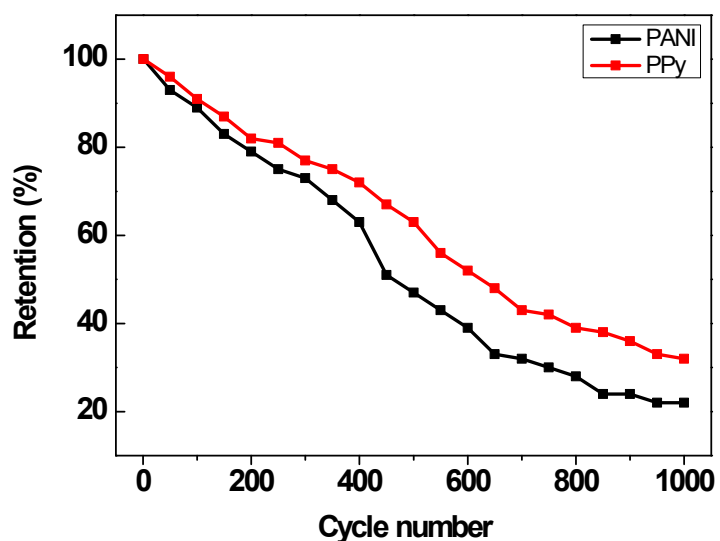


Figure S4. Cycling performance of pure PANI and PPy at 2 A g^{-1} in $1 \text{ M H}_2\text{SO}_4$ (aq.), 22 and 32% of the original capacitances were retained after 1000 cycles, respectively.