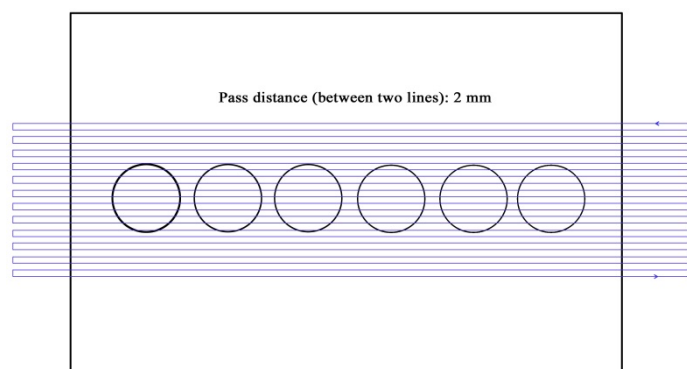


## Wettability of Hierarchically-Textured Ceramic Coatings produced by Suspension HVOF Spraying

Feifei Zhang<sup>a</sup>, Ben W. Robinson<sup>b</sup>, Heidi de Villiers-Lovelock<sup>c</sup>, Robert J.K. Wood<sup>a</sup> and Shuncai Wang<sup>a,\*</sup>

### Electronic Supplementary information (ESI)



**Fig. S1** Spray route of the gun during the deposition process

**Table S1** Atomic fractions of elements in percent, as detected by XPS on the coating surfaces

Peak	Position BE (eV)	S-H-0	S-H-15
Ti	459	22.8	9.7
O	532	64.1	65.1
C	285	13.1	12.4
B	191		7.7
N	399		5.1

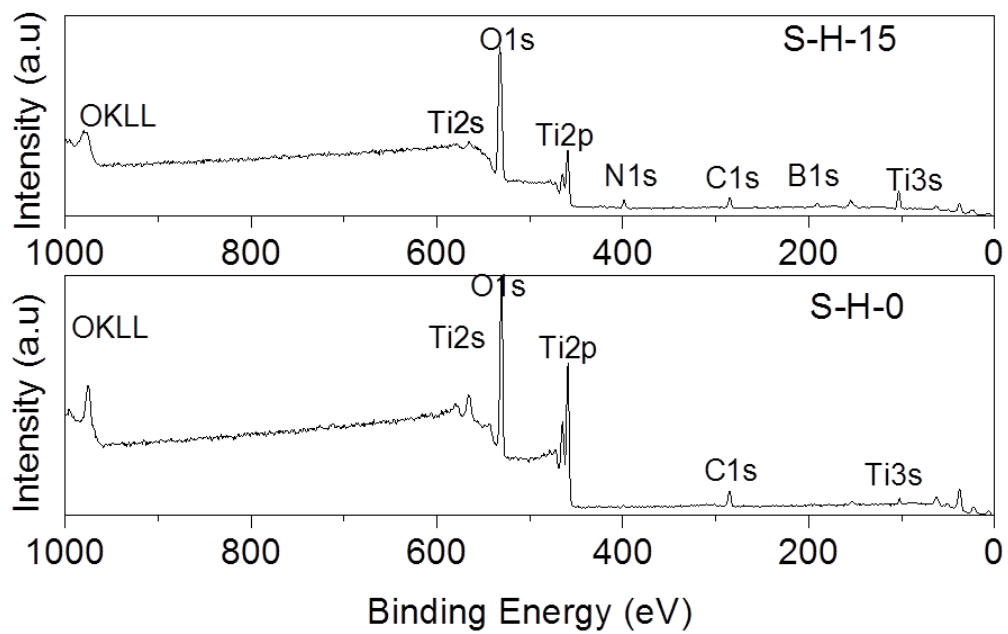


Fig. S2 XPS spectra of Coatings S-H-0 (bottom) and S-H-15 (top)

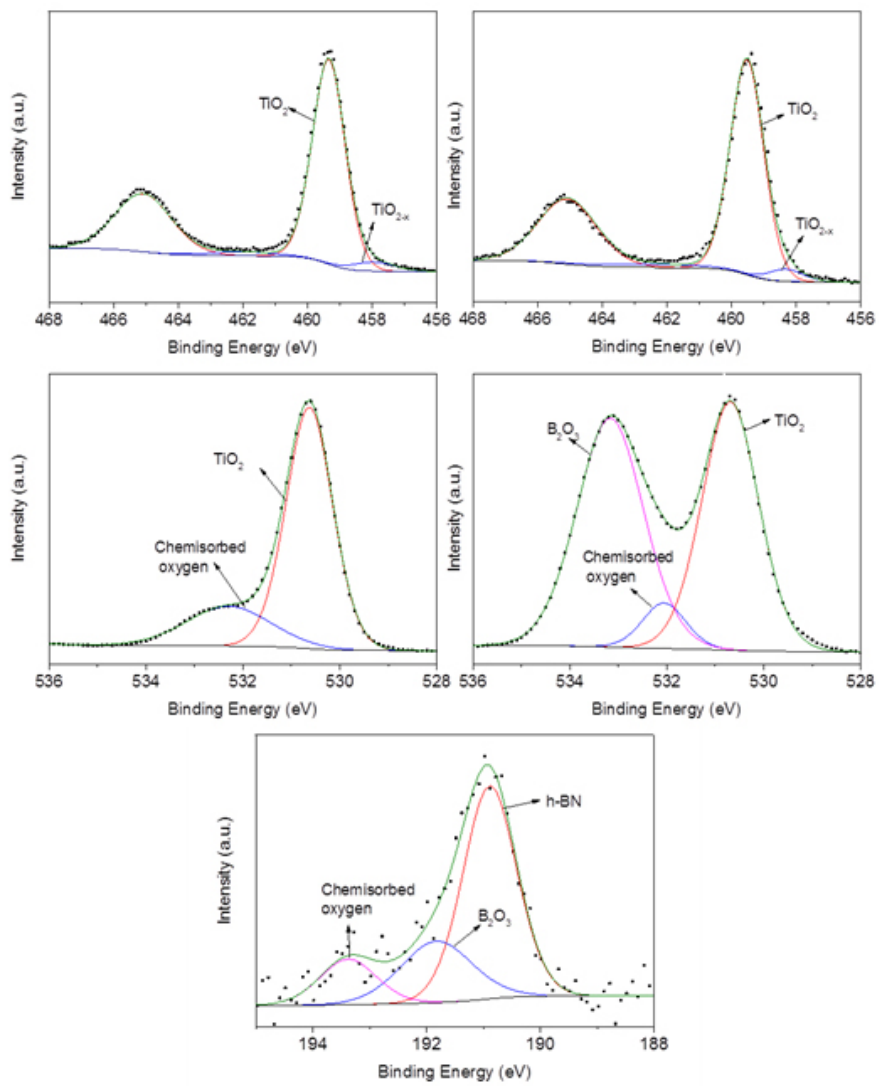
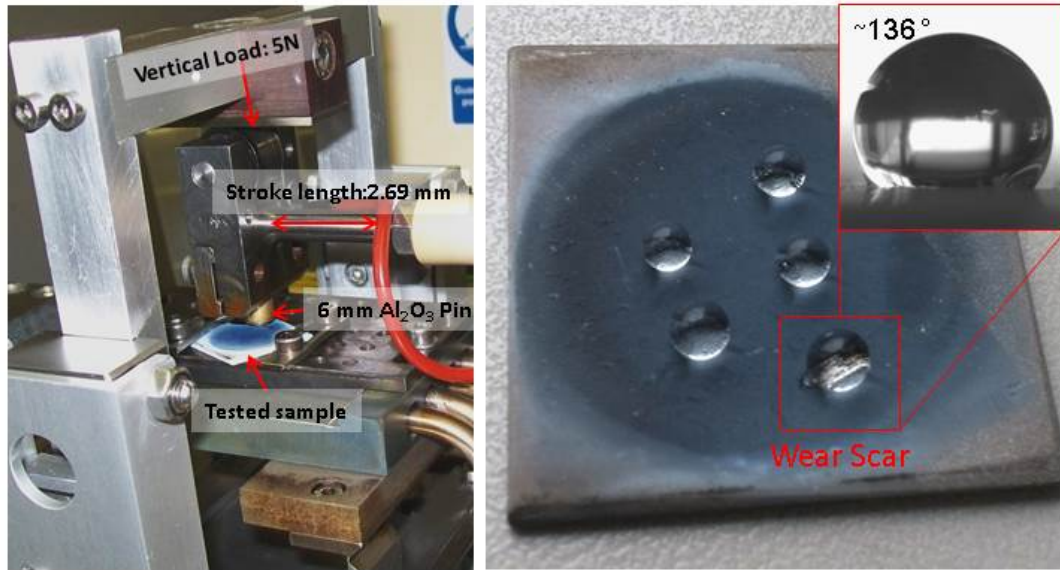


Fig. S3 High-resolution XPS spectra of Ti 2p, O1s and B 1s



**Fig. S4** Sliding wear test on the superhydrophobic surface, showing a reduction of contact angle to ca.  $136^\circ$  in the wear scar