

Supplementary Information

**Self-assembly of monodispersed hierarchically porous  
Beta-SBA-15 with different morphologies and their  
hydro-upgrading performances of FCC gasoline**

Daowei Gao,<sup>a</sup> Aijun Duan,<sup>\*a</sup> Xin Zhang,<sup>\*a</sup> Kebin Chi,<sup>b</sup> Zhen Zhao,<sup>a</sup> Jianmei Li,<sup>c</sup> Yuchen Qin,<sup>a</sup>  
Xilong Wang,<sup>a</sup> Chunming Xu<sup>a</sup>

<sup>a</sup>State Key Laboratory of Heavy Oil Processing, China University of Petroleum,  
Beijing 102249, PR China;

<sup>b</sup>Petrochemical Research Institute, PetroChina Company Limited, Beijing 100195,  
P. R. China;

<sup>c</sup>College of Science, China University of Petroleum, Beijing 102249, PR  
China.

\* To whom correspondence should be addressed: Tel/Fax: (+86)10-8973-1283;

E-mail: [duanaijun@cup.edu.cn](mailto:duanaijun@cup.edu.cn), [zhangxin@cup.edu.cn](mailto:zhangxin@cup.edu.cn)

## Supplementary Information

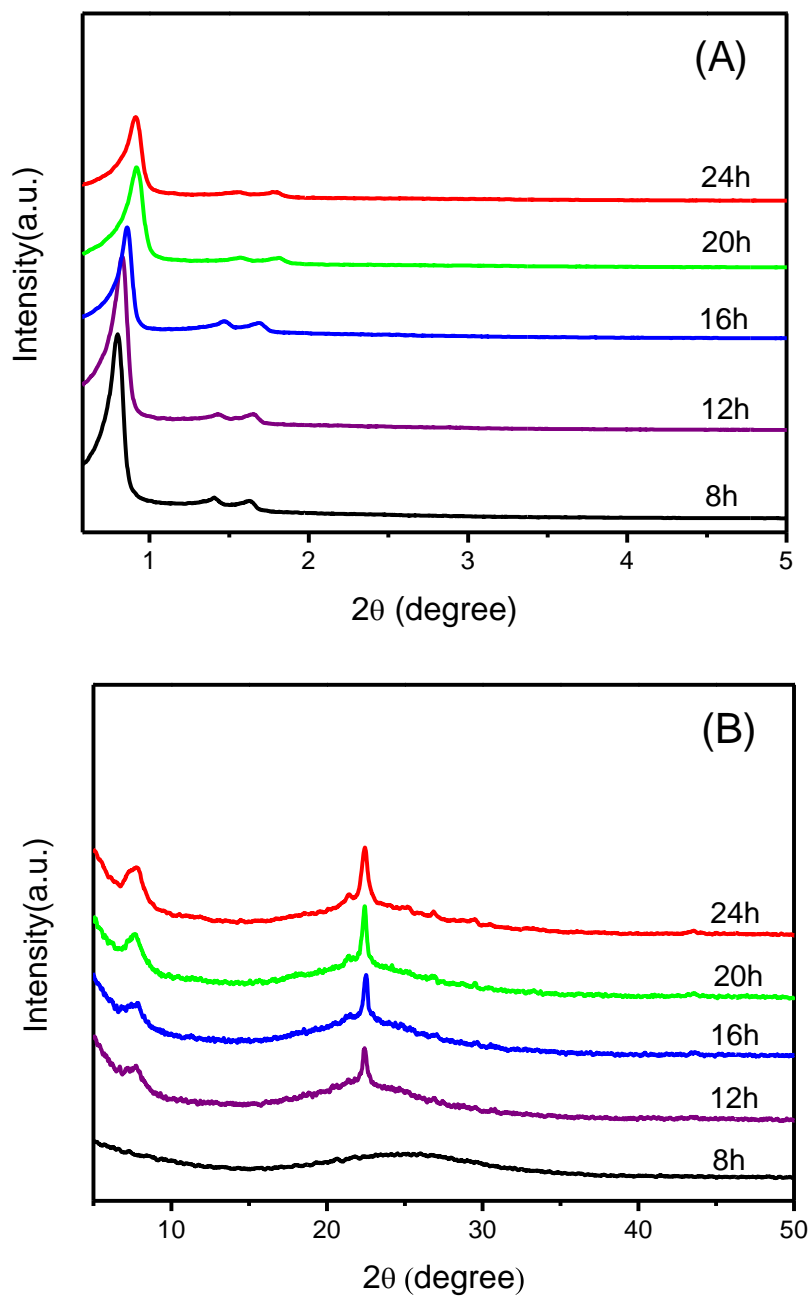


Fig. S1 XRD patterns of Beta-SBA-15 composites synthesized from the Beta nanocrystals with different crystallization times in the low angle (A) and wide angle (B) domains.

## Supplementary Information

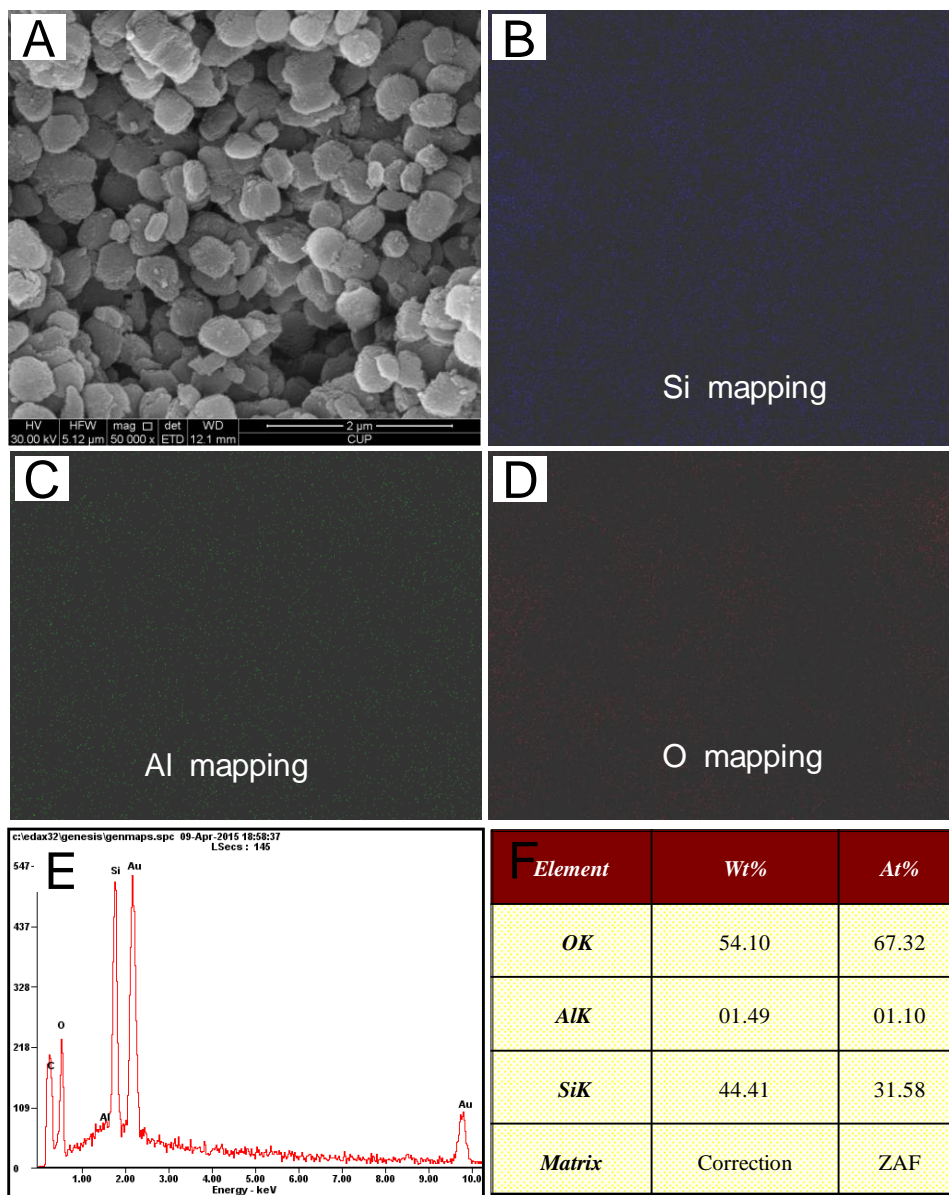


Fig. S2 SEM micrograph (A), EDX mapping (B-D) and EDX spectra (E-F) of

Beta-SBA-15 with platelet morphology.

## Supplementary Information

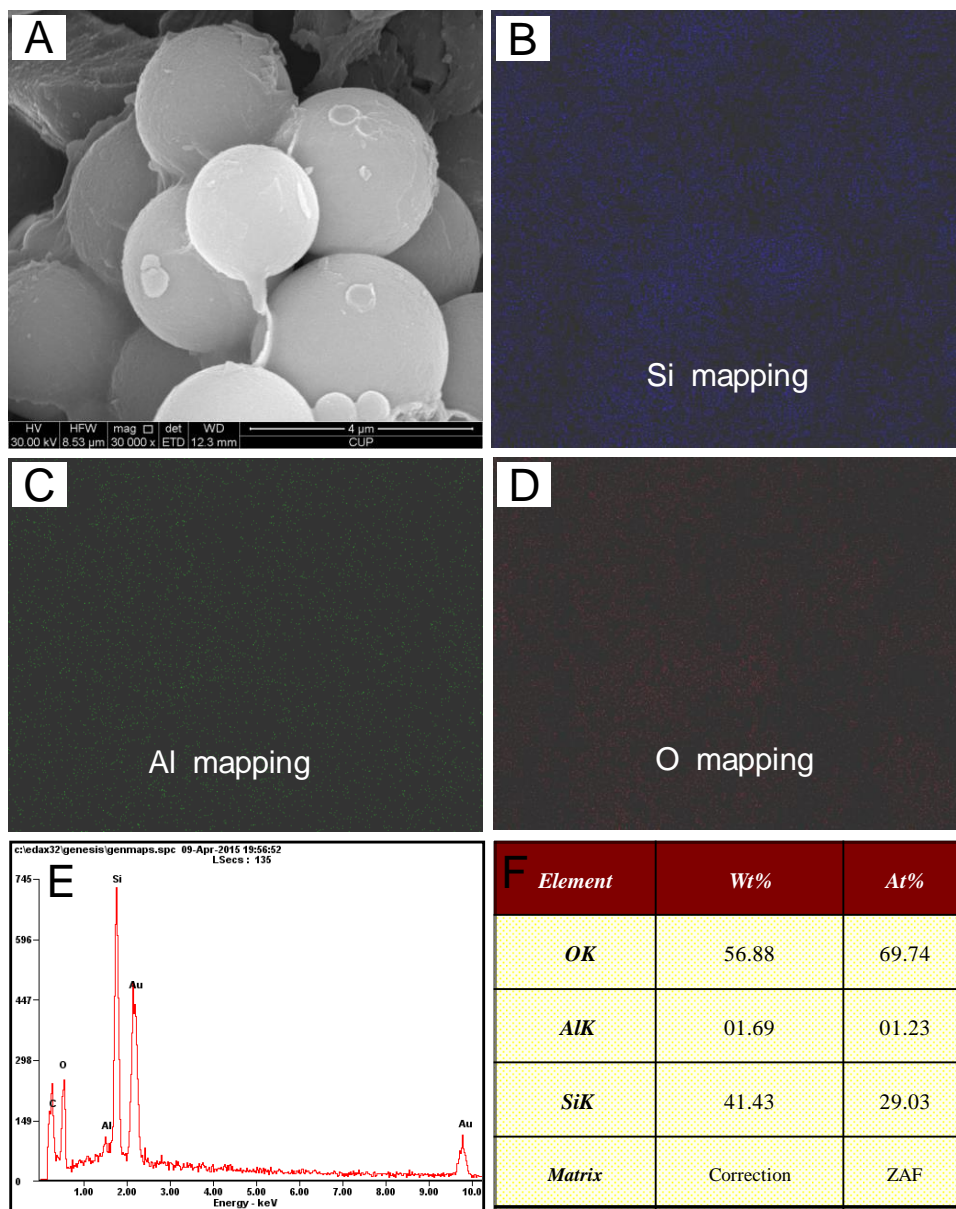


Fig. S3 SEM micrograph (A), EDX mapping (B-D) and EDX spectra (E-F) of

Beta-SBA-15 with sphere morphology.

## Supplementary Information

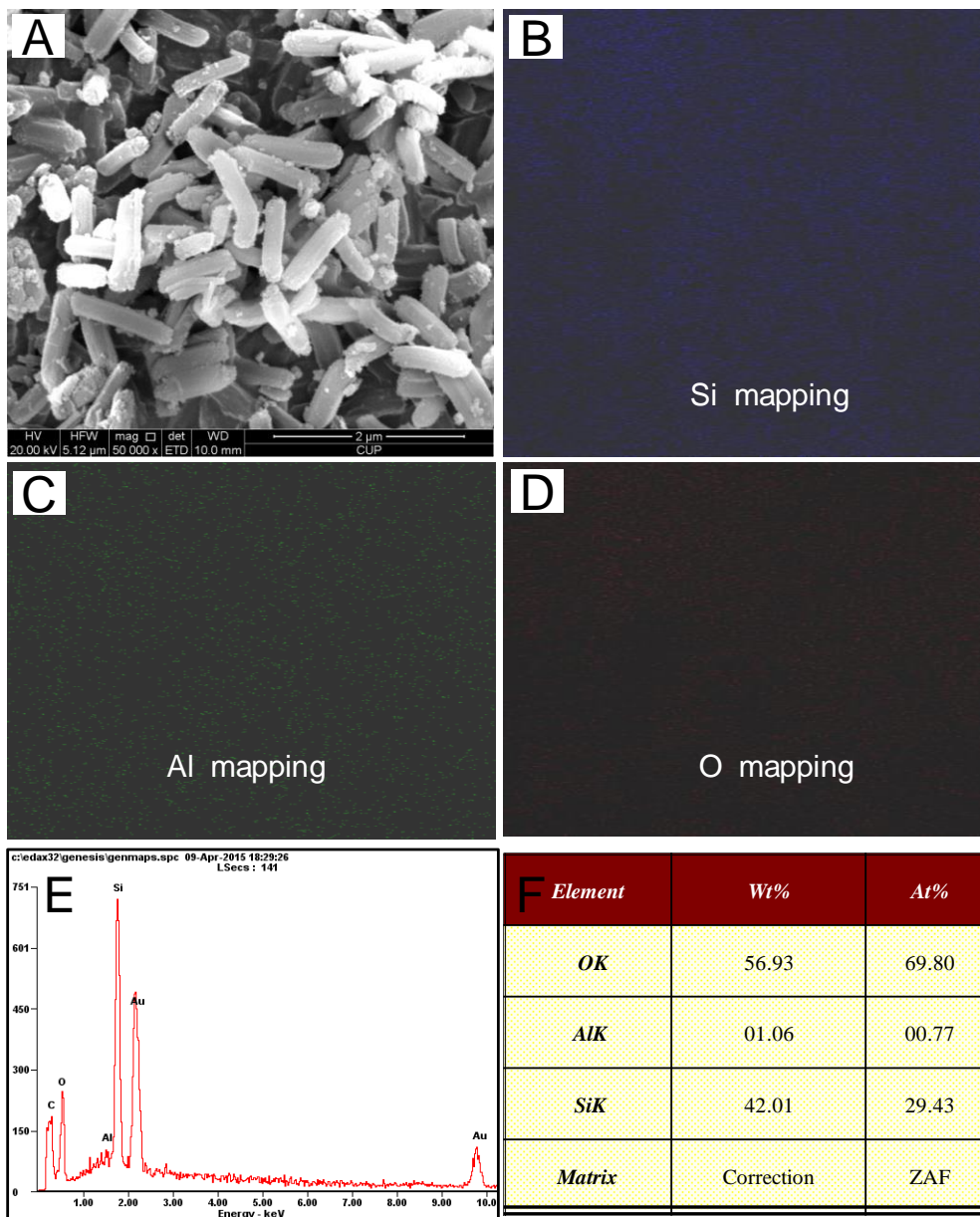


Fig. S4 SEM micrograph (A), EDX mapping (B-D) and EDX spectra (E-F) of

Beta-SBA-15 with short-rod morphology.

## Supplementary Information

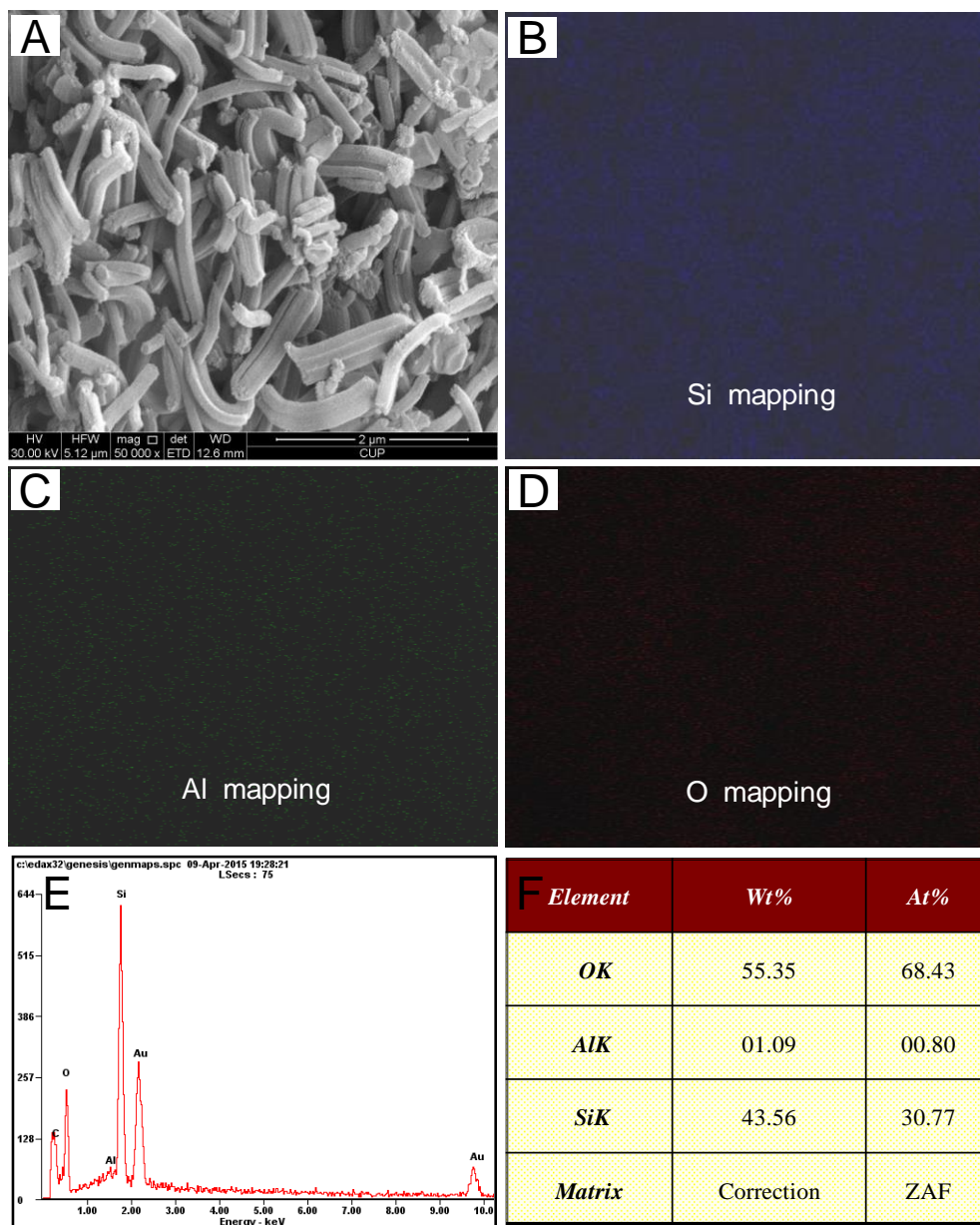


Fig. S5 SEM micrograph (A), EDX mapping (B-D) and EDX spectra (E-F) of

Beta-SBA-15 with long-rod morphology.

Supplementary Information

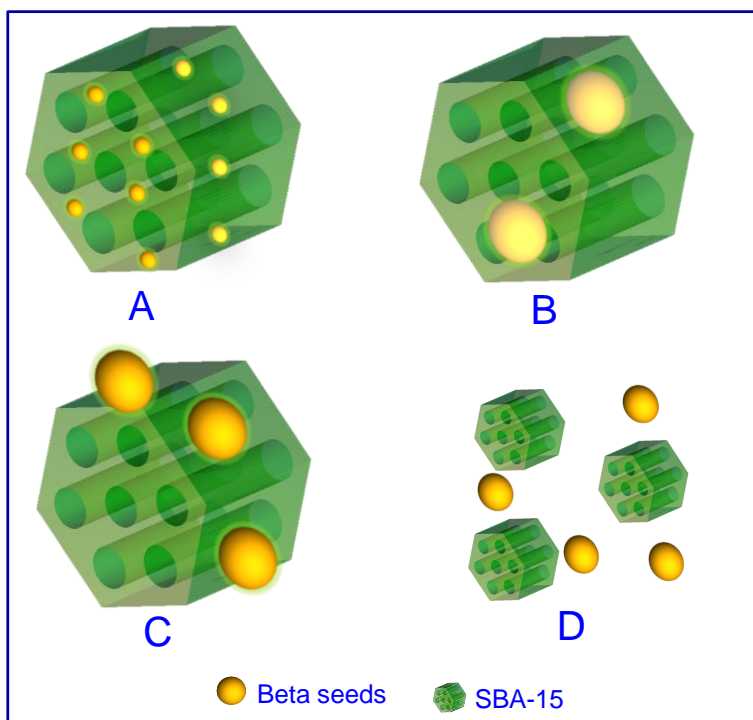


Fig. S6 Possible structures of the as-synthesized Beta-SBA-15.

## Supplementary Information

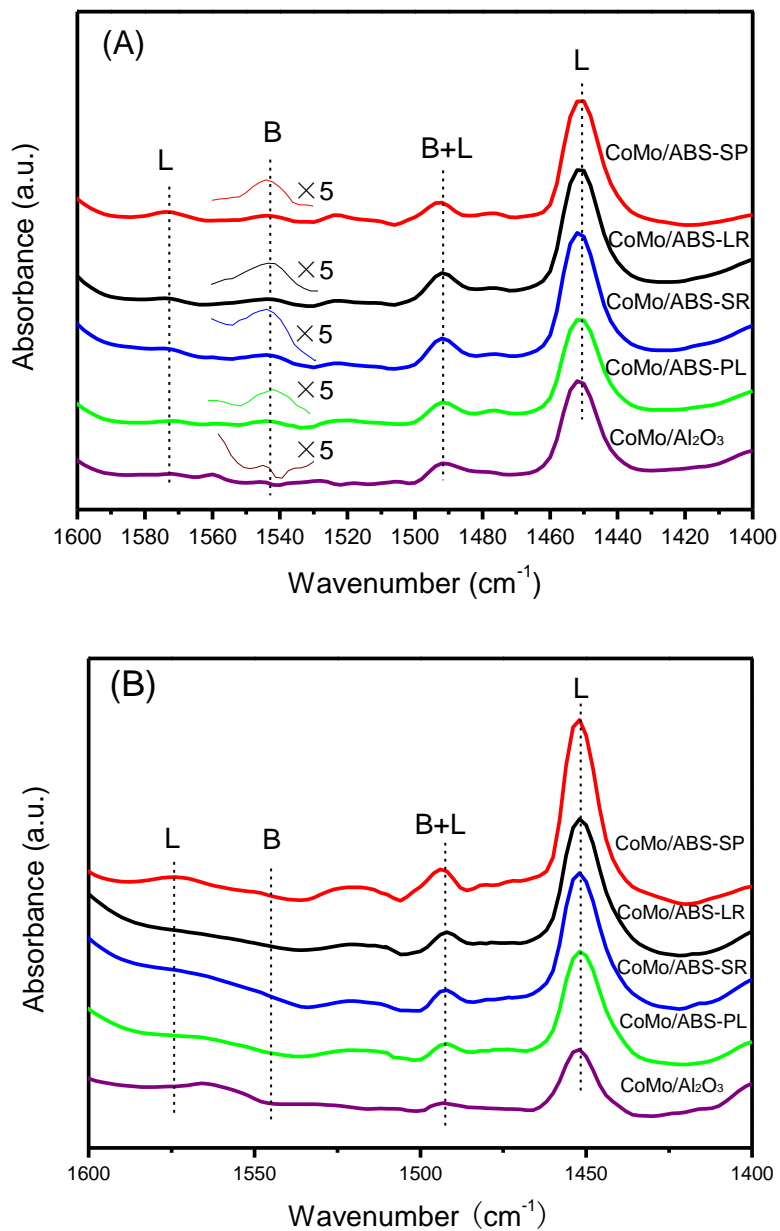


Fig. S7 FTIR spectra of pyridine adsorbed on the oxide CoMo catalysts after degassing at (A) 200 and (B) 350 °C.



## Supplementary Information

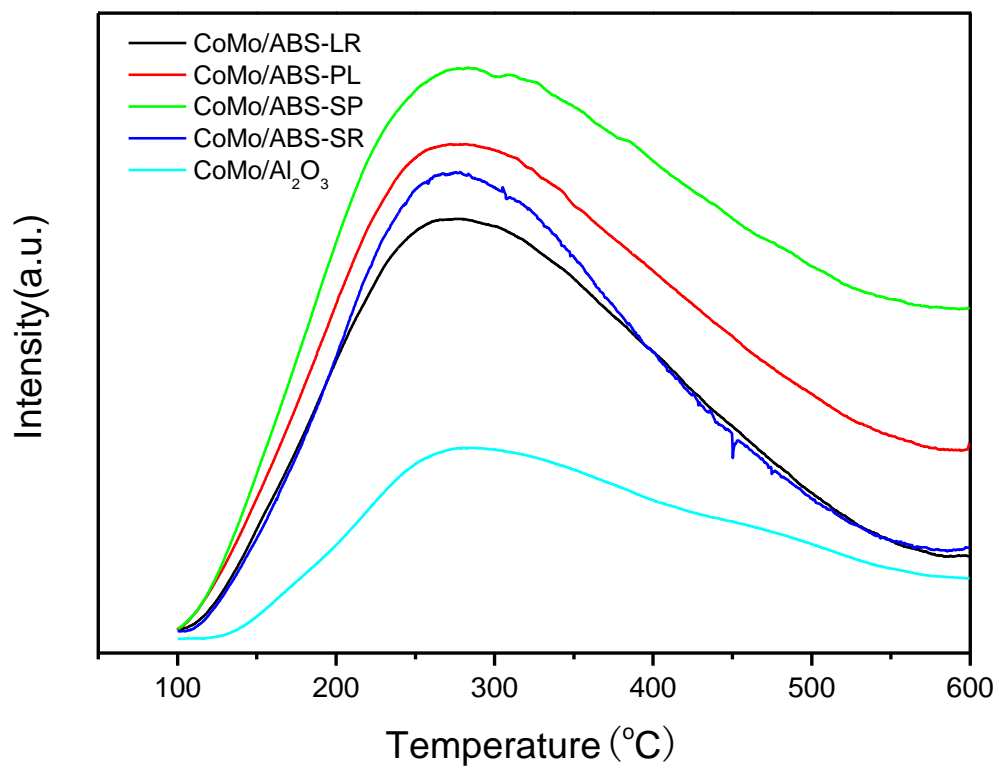


Fig. S8 NH<sub>3</sub>-TPD profiles of the catalysts.

## Supplementary Information

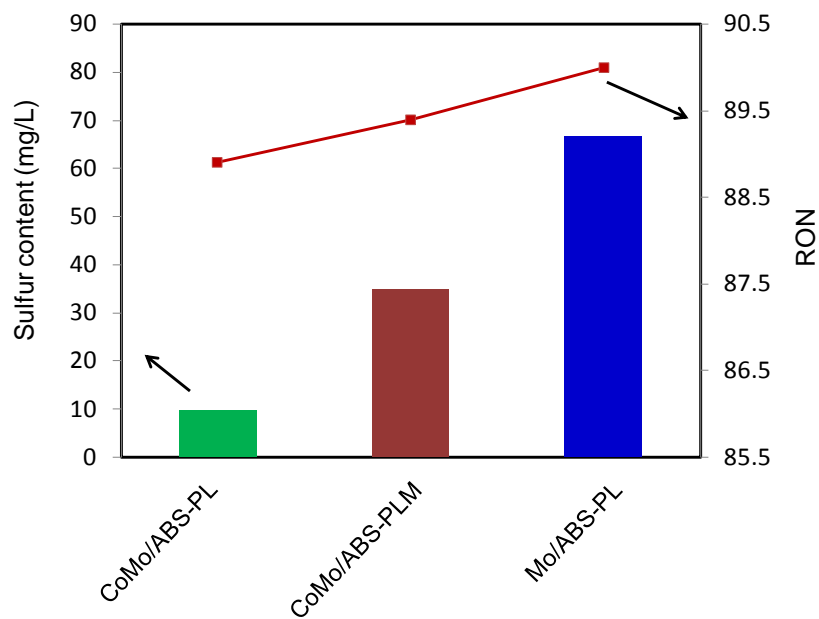


Fig. S9 The RON values and the sulfur contents of the products over the catalysts with different loadings of Co species.

### Supplementary Information

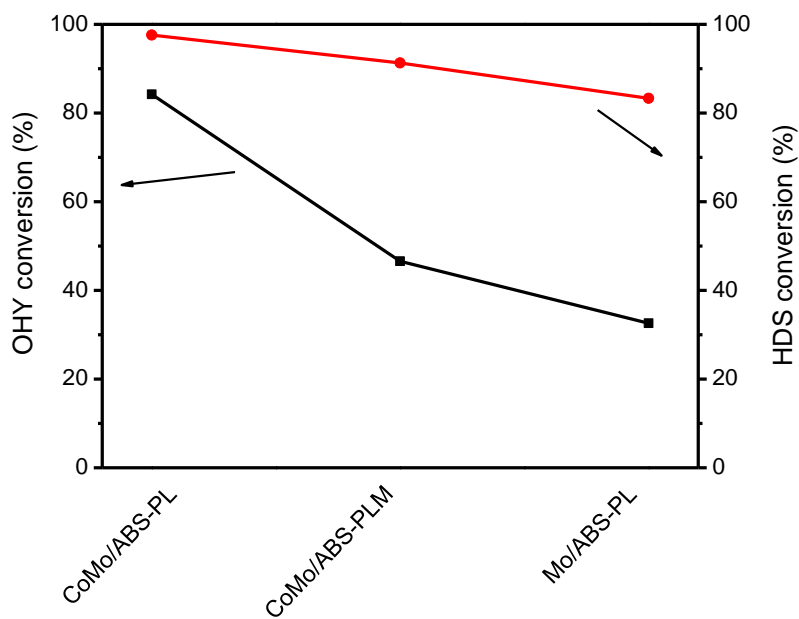


Fig. S10 The tendencies of the OHY and HDS activities over the catalysts with different loadings of Co species.