

Sulfur synchronously electrodeposited onto exfoliated graphene sheets as cathode material for advanced lithium-sulfur batteries

Liyuan Zhang^a, Hui Huang^{a,b,*}, Hailin Yin^a, Yang Xia^{a,b}, Jianmin Luo^a, Chu Liang^{a,b},
Yongping Gan^a, Xinyong Tao^c, Wenkui Zhang^{a,*}

^a *College of Materials Science and Engineering, Zhejiang University of Technology, Hangzhou 310014, China*

^b *State Key Lab of Silicon Materials & Department of Materials Science and Engineering, Hangzhou 310027, China Zhejiang University*

^c *Department of Materials Science and Engineering, Stanford University, Stanford, California 94305, United States*

*Corresponding authors. E-mail address: msechem@zjut.edu.cn

Supporting Information

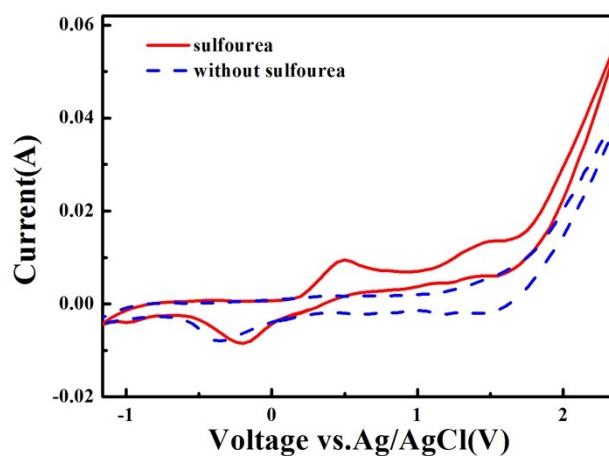


Figure S1. Cyclic voltammetry curves of graphite electrode in the electrolytes with or without addition of sulphourea at a scan rate of 5 mV s^{-1} .

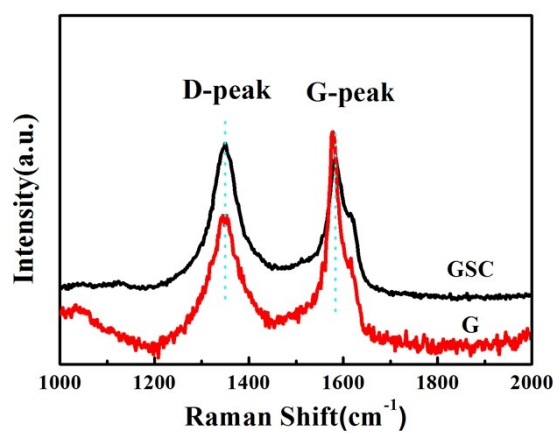


Figure S2. Raman spectra of the as-prepared GSC and graphene samples.

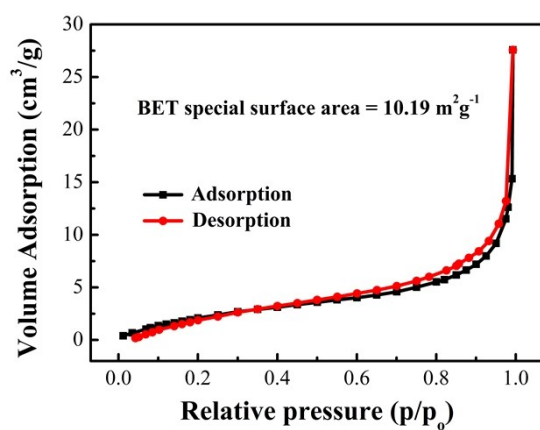


Figure S3. Nitrogen adsorption-desorption isotherms of GSC.

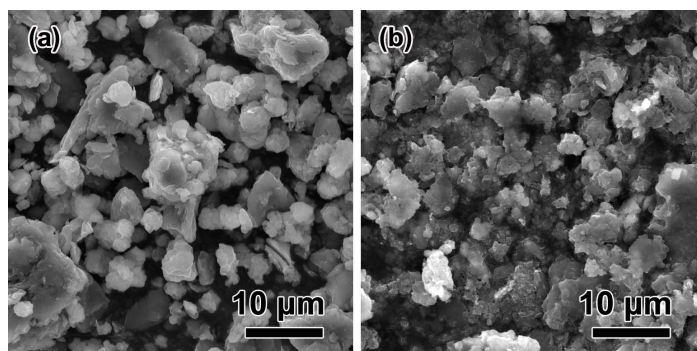


Figure S4. SEM image of GSC: (a) before cycling and (b) after 200 cycles at 5 A g⁻¹.