

Fig. S1. SEM image of Fe_3O_4 particles and NF- Fe_3O_4

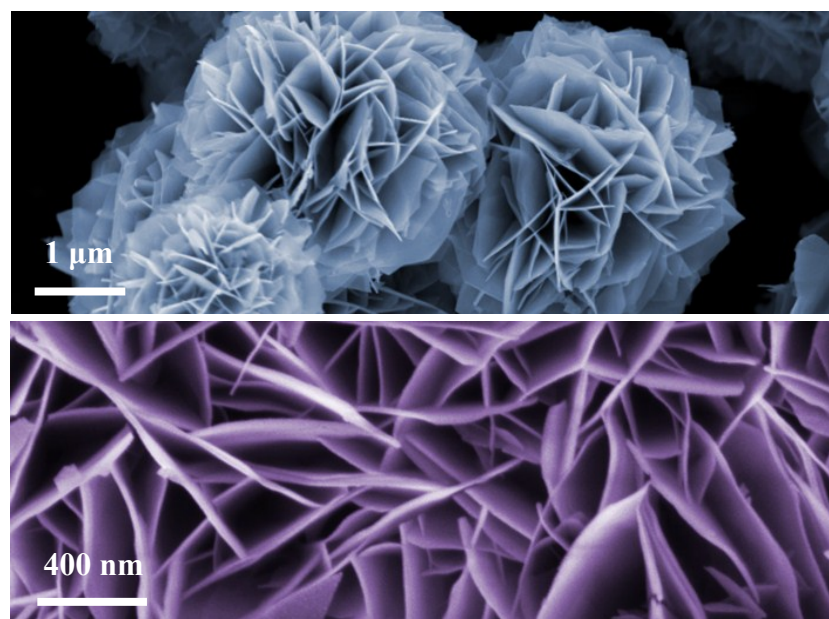


Fig. S2. (a) CV curves of the ASC device at different voltage windows at a scan rate of 100 mV s^{-1} . (b) Galvanostatic charge-discharge tests of the ASC device.

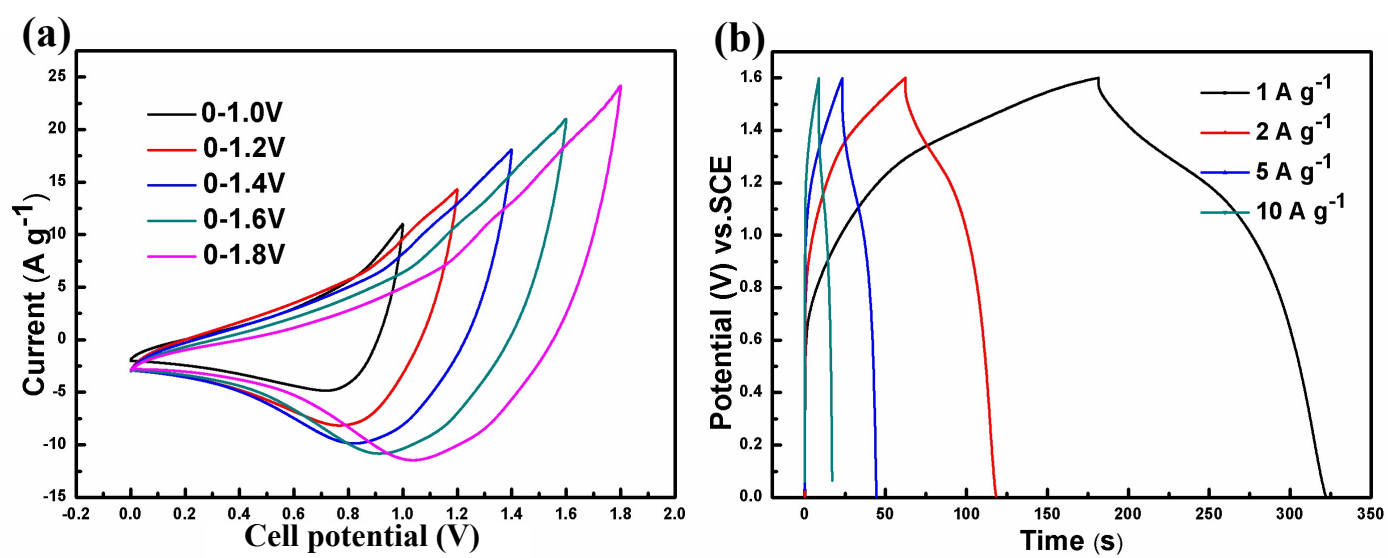


Fig. S3. The CV curves under (at current density 50mV/s) different bending conditions.

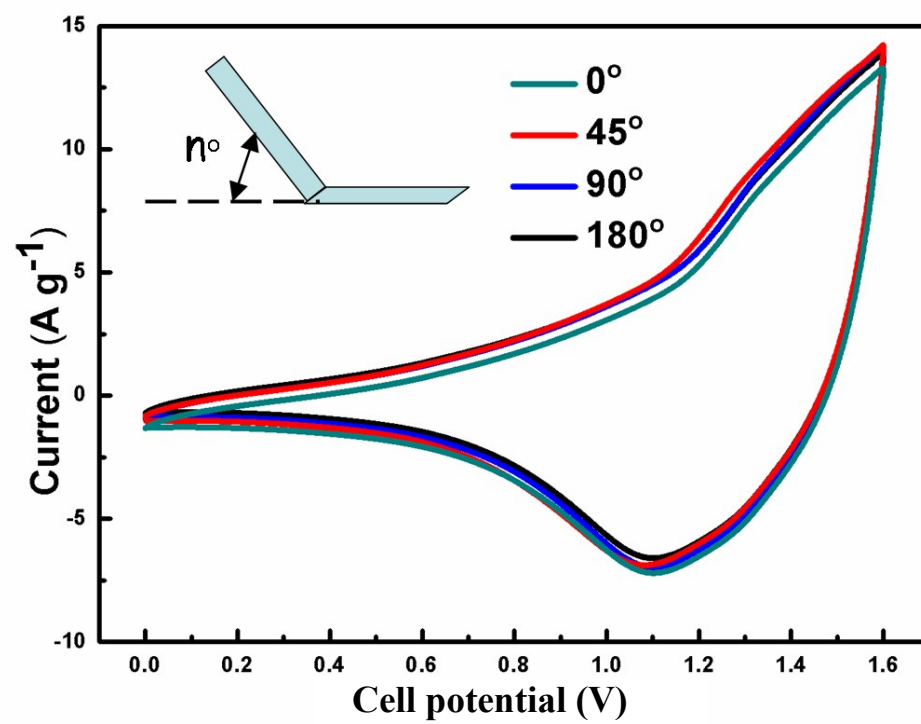


Fig. S4. Nyquist plots of the NF-Co₂AlO₄@MnO₂ // NF-Fe₃O₄ full device.

