

## Supplementary Information

### Ionic Conjugates of Lidocaine and Sweeteners for Taste Modulation

Iryna O. Lebedyeva,<sup>a,b</sup> Alexander A. Oliferenko,<sup>b,c\*</sup> Polina V. Oliferenko,<sup>c</sup> Robert Hromas,<sup>d</sup> John Neubert,<sup>e</sup> Robert M. Caudle,<sup>f</sup> William L. Castleman,<sup>g</sup> Gary I. Altschuler,<sup>h</sup> David A. Ostrov,<sup>i</sup> C. Dennis Hall,<sup>b</sup> the late Alan R. Katritzky<sup>b</sup>

<sup>a</sup> Department of Chemistry and Physics, Georgia Regents University, Augusta, GA 30904

<sup>b</sup> Center for Heterocyclic Compounds, Department of Chemistry, University of Florida, Gainesville, FL 32611<sup>c</sup>EigenChem Technologies Inc., Alachua, FL 32615

<sup>d</sup> Department of Medicine, College of Medicine, University of Florida & Shands, Gainesville, FL 32610

<sup>e</sup> Department of Orthodontics, College of Dentistry, University of Florida, Gainesville, FL 32610

<sup>f</sup> Department of Oral and Maxillofacial Surgery, College of Dentistry, University of Florida, Gainesville, FL 32610

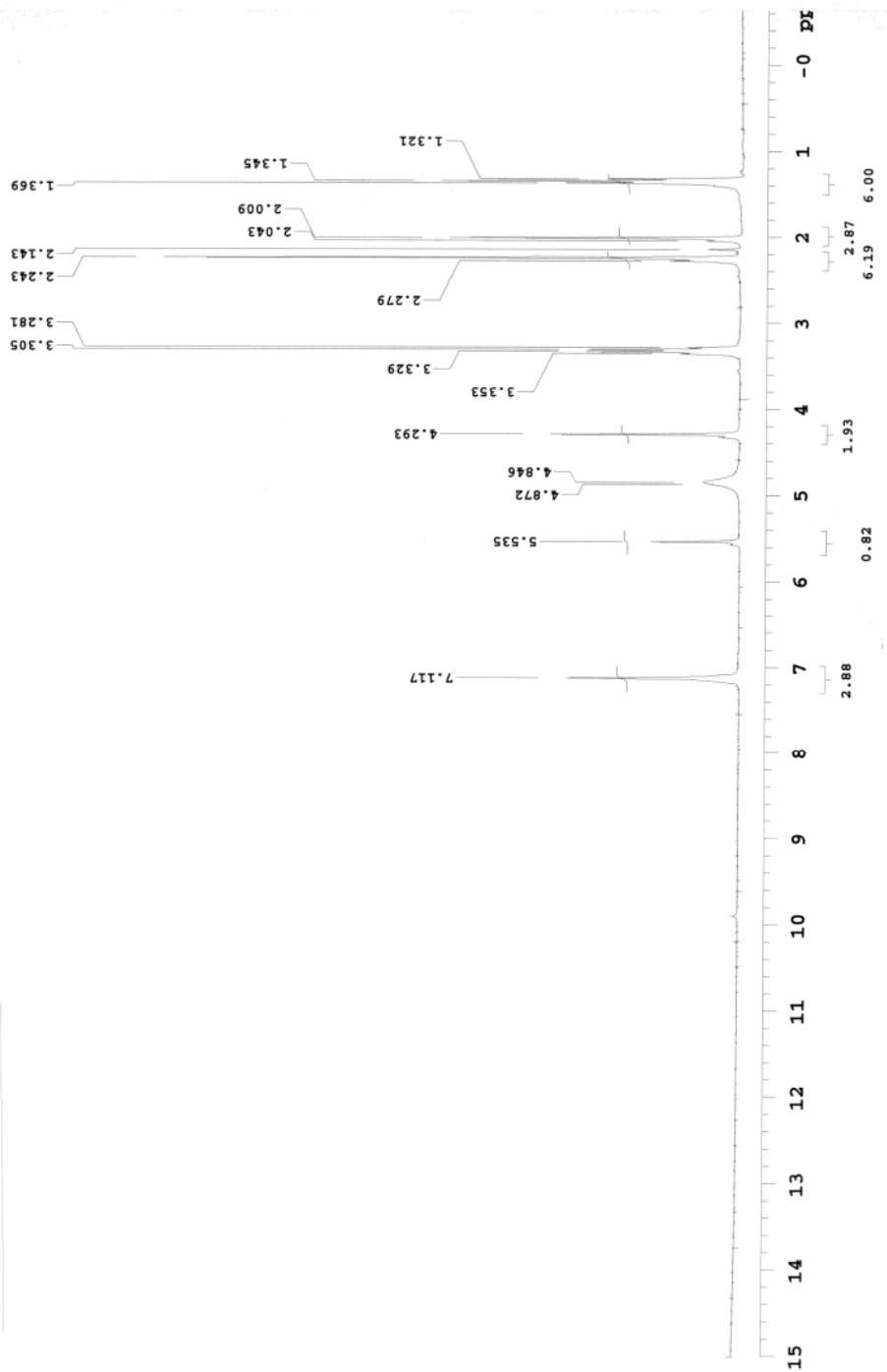
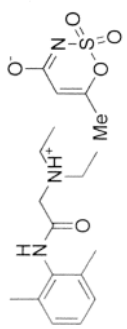
<sup>g</sup> Department of Infectious Diseases and Pathology, College of Veterinary Medicine University of Florida, Gainesville, FL 32611

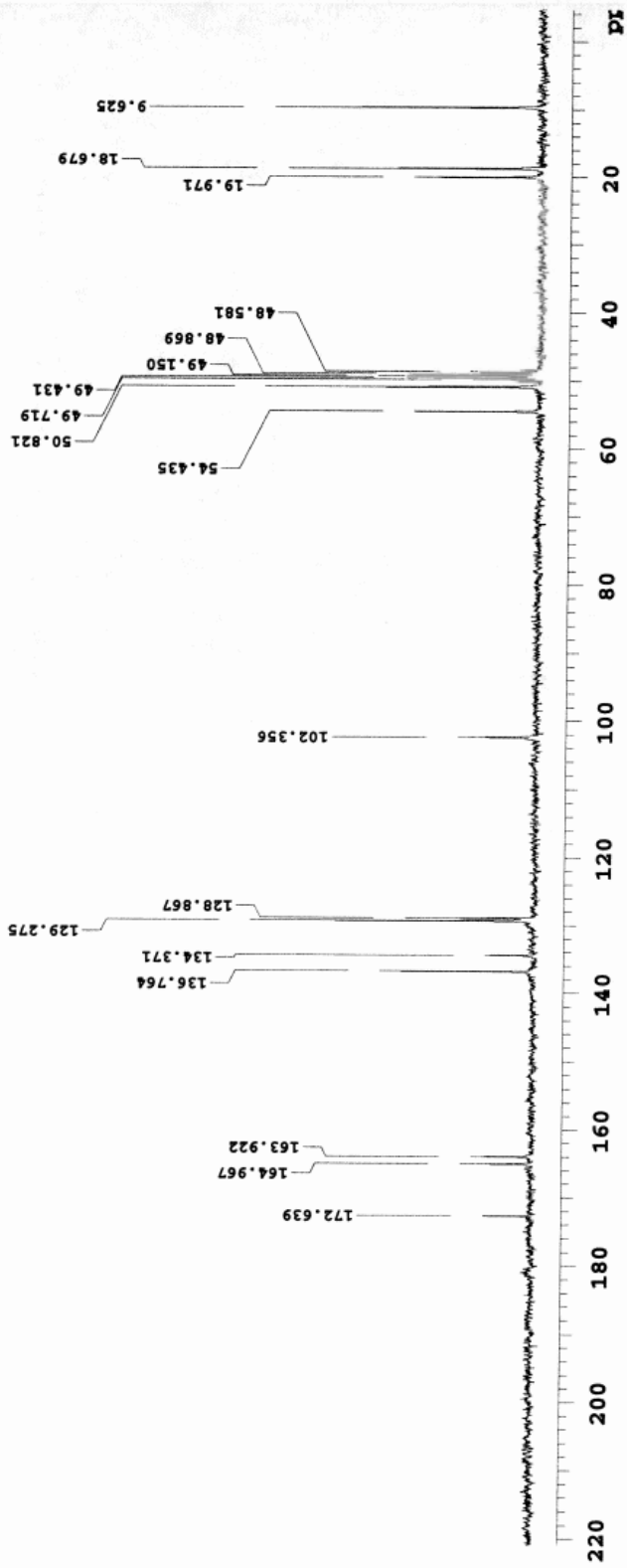
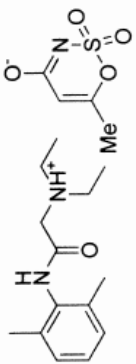
<sup>h</sup> Altschuler Periodontic and Implant Center, Gainesville, FL 32606

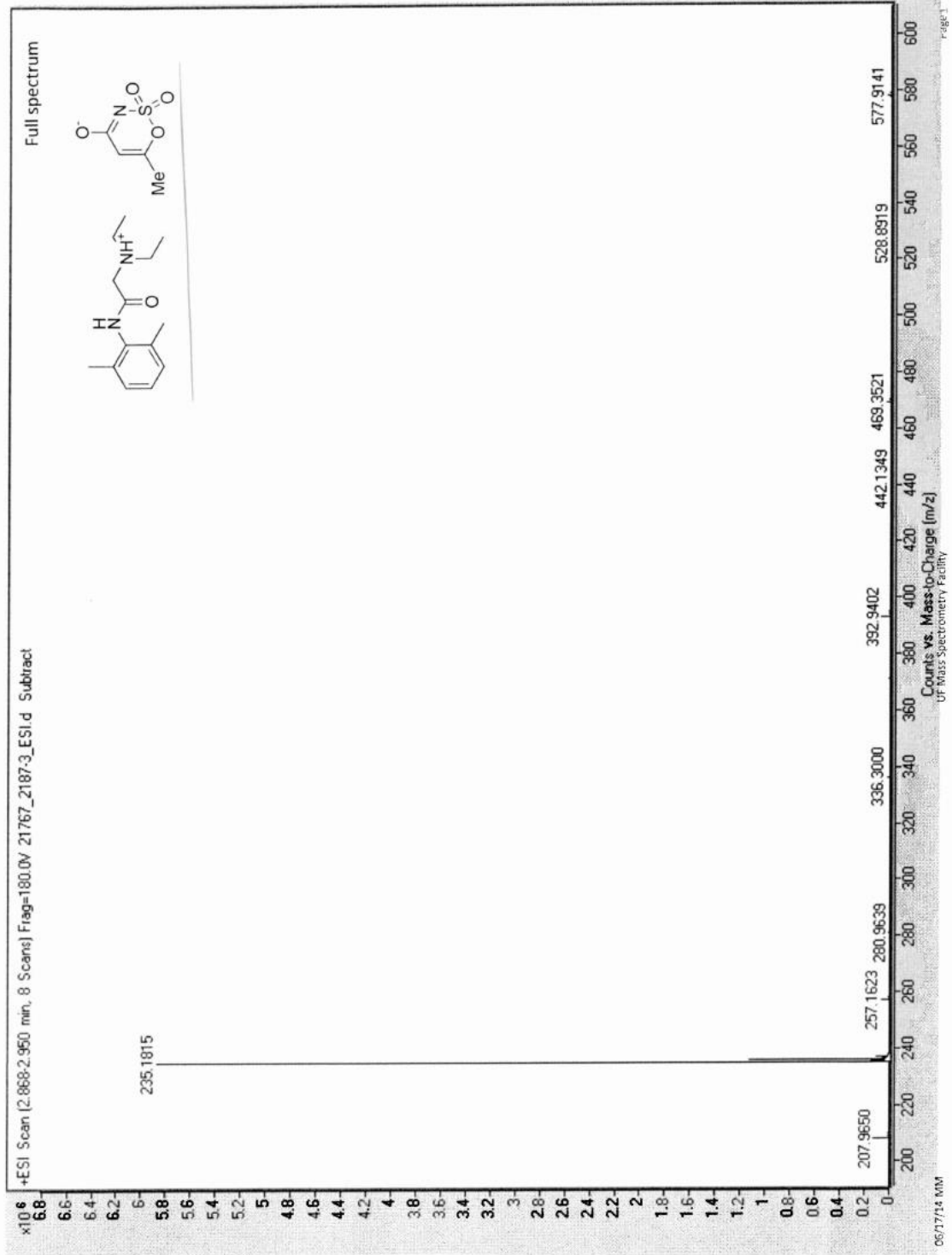
<sup>i</sup> Department of Pathology, Immunology and Laboratory Medicine, College of Medicine, University of Florida, Gainesville, FL 32610

E-mail: ilebedyeva@gru.edu

<b>Contents</b>	<b>Page</b>
<sup>1</sup> H spectrum of 2-((2,6-dimethylphenyl)amino)- <i>N,N</i> -diethyl-2-oxoethan-1-aminium 6-methyl-1,2,3-oxathiazin-4-olate 2,2-dioxide ( <b>3a</b> )	S3
<sup>13</sup> C spectrum of 2-((2,6-dimethylphenyl)amino)- <i>N,N</i> -diethyl-2-oxoethan-1-aminium 6-methyl-1,2,3-oxathiazin-4-olate 2,2-dioxide ( <b>3a</b> )	S4
HRMS spectra of 2-((2,6-dimethylphenyl)amino)- <i>N,N</i> -diethyl-2-oxoethan-1-aminium 6-methyl-1,2,3-oxathiazin-4-olate 2,2-dioxide ( <b>3a</b> )	S5
CHNCl combustion analysis of 2-((2,6-dimethylphenyl)amino)- <i>N,N</i> -diethyl-2-oxoethan-1-aminium 6-methyl-1,2,3-oxathiazin-4-olate 2,2-dioxide ( <b>3a</b> )	S9
<sup>1</sup> H spectrum of 2-((2,6-dimethylphenyl)amino)- <i>N,N</i> -diethyl-2-oxoethan-1-aminium benzo[d]isothiazol-3-olate 1,1-dioxide ( <b>3b</b> )	S10
<sup>13</sup> C spectrum of 2-((2,6-dimethylphenyl)amino)- <i>N,N</i> -diethyl-2-oxoethan-1-aminium benzo[d]isothiazol-3-olate 1,1-dioxide ( <b>3b</b> )	S11
HRMS spectra of 2-((2,6-dimethylphenyl)amino)- <i>N,N</i> -diethyl-2-oxoethan-1-aminium benzo[d]isothiazol-3-olate 1,1-dioxide ( <b>3b</b> )	S12
<sup>1</sup> H spectrum of 2-((2,6-dimethylphenyl)amino)- <i>N,N</i> -diethyl-2-oxoethan-1-aminium (2 <i>R</i> ,3 <i>S</i> ,4 <i>R</i> ,5 <i>R</i> )-2,3,4,5,6-pentahydroxyhexanoate ( <b>3c</b> )	S15
<sup>13</sup> C spectrum of 2-((2,6-dimethylphenyl)amino)- <i>N,N</i> -diethyl-2-oxoethan-1-aminium (2 <i>R</i> ,3 <i>S</i> ,4 <i>R</i> ,5 <i>R</i> )-2,3,4,5,6-pentahydroxyhexanoate ( <b>3c</b> )	S16
HRMS spectra of 2-((2,6-dimethylphenyl)amino)- <i>N,N</i> -diethyl-2-oxoethan-1-aminium (2 <i>R</i> ,3 <i>S</i> ,4 <i>R</i> ,5 <i>R</i> )-2,3,4,5,6-pentahydroxyhexanoate ( <b>3c</b> )	S17

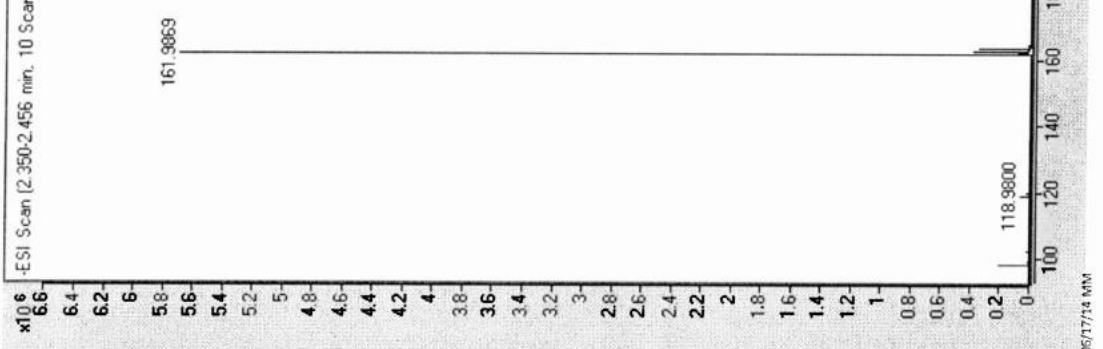
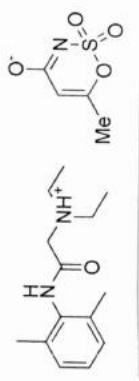






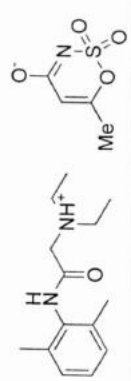
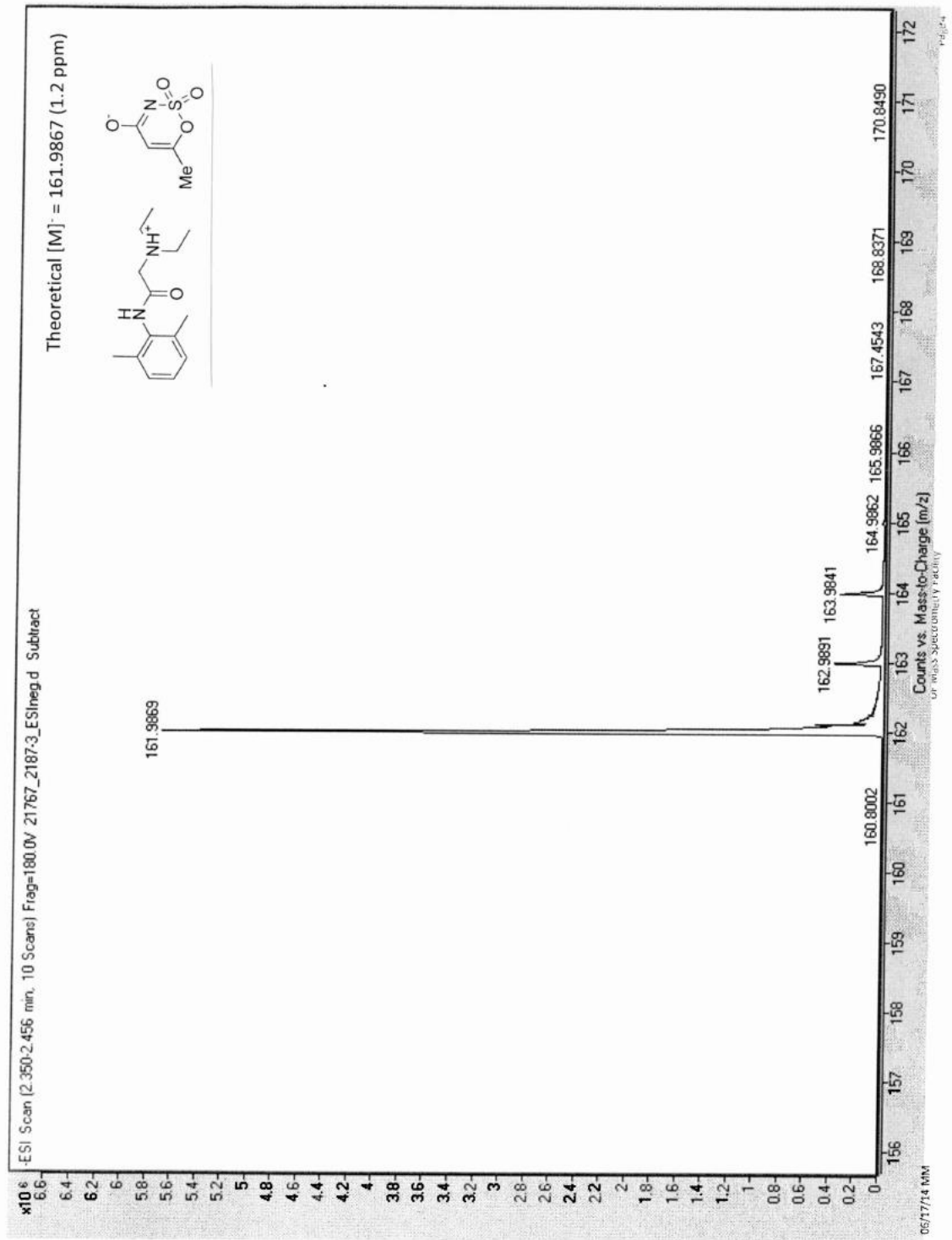


x10<sup>6</sup> -ESI Scan (2.350-2.456 min., 10 Scans) Frag=180.0V 21767\_2187-3\_ESIneg.d Subtract Full spectrum



06/17/14 MW

Page 3







# ATLANTIC MICROLAB, INC.

Sample No. ECT-15

6180 Atlantic Blvd. Suite M  
Norcross, GA 30071

www.atlanticmicrolab.com

PROFESSOR/SUPERVISOR: Alexander Olliferenko  
PO# / CC#: 4/AM

Company / School EigenChem Technologies Inc.  
Address 12085 Research Drive, Ste 141  
Dept. Lab

**SUBMITTER**

Alexander Olliferenko NAME DATE 7/2/13  
PHONE (352) 682-9964

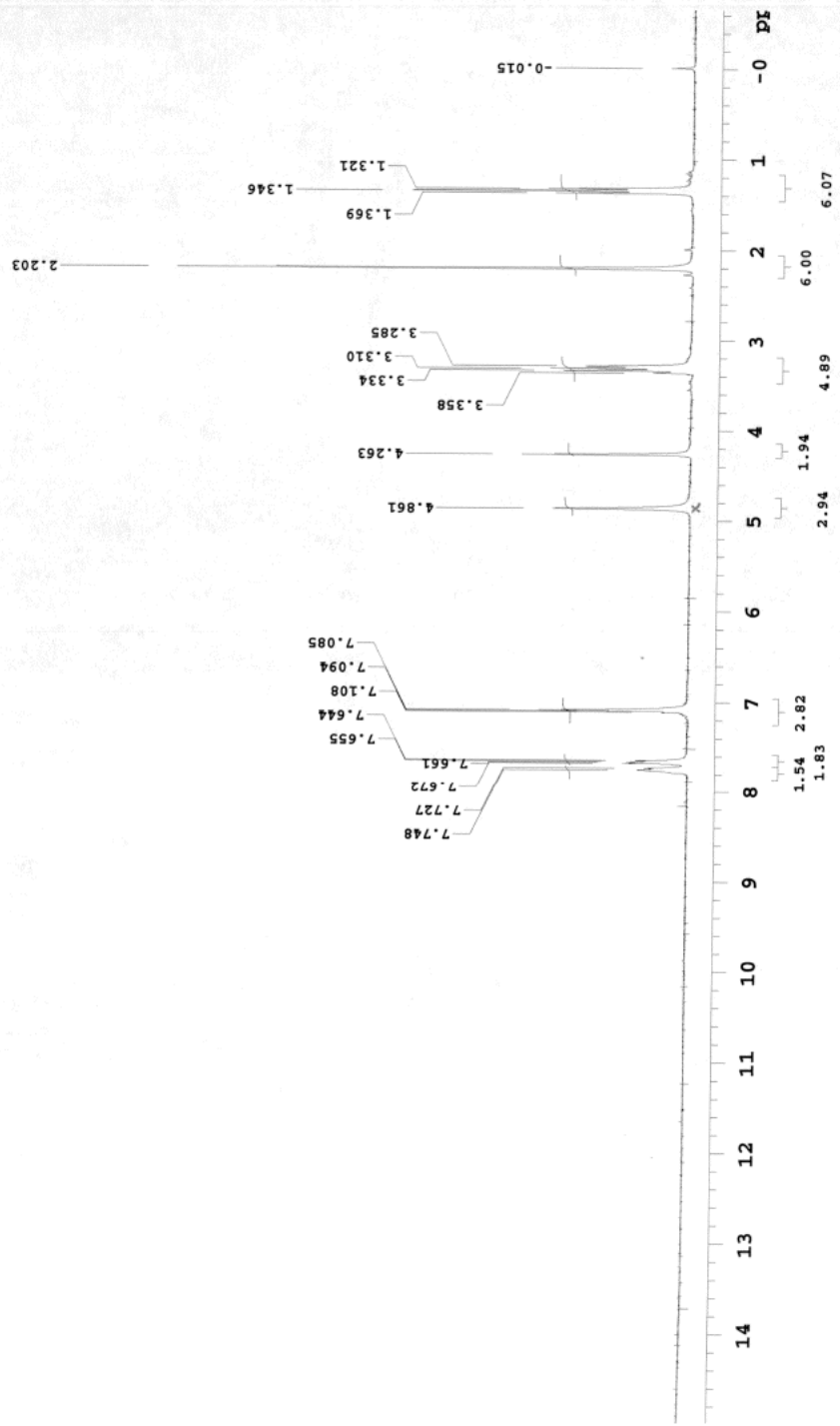
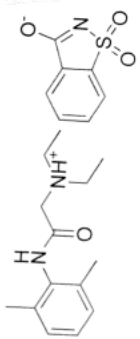
Element	Theory	Found	Single <input checked="" type="checkbox"/> Duplicate <input type="checkbox"/>
C	54.5300	54.27	Elements Present: CHNSCI
H	6.6100	6.83	Analyze for: CHNSCI
N	10.6000	10.34	Hygroscopic <input checked="" type="checkbox"/> Explosive <input type="checkbox"/>
O	19.2000		M.P. _____ B.P. _____
S	8.0700	7.93	To be dried: Yes <input checked="" type="checkbox"/> No <input type="checkbox"/>
Cl	1.0000	Trace: < 0.25%	Temp. 50 deg C. Vac. _____ Time 2 h

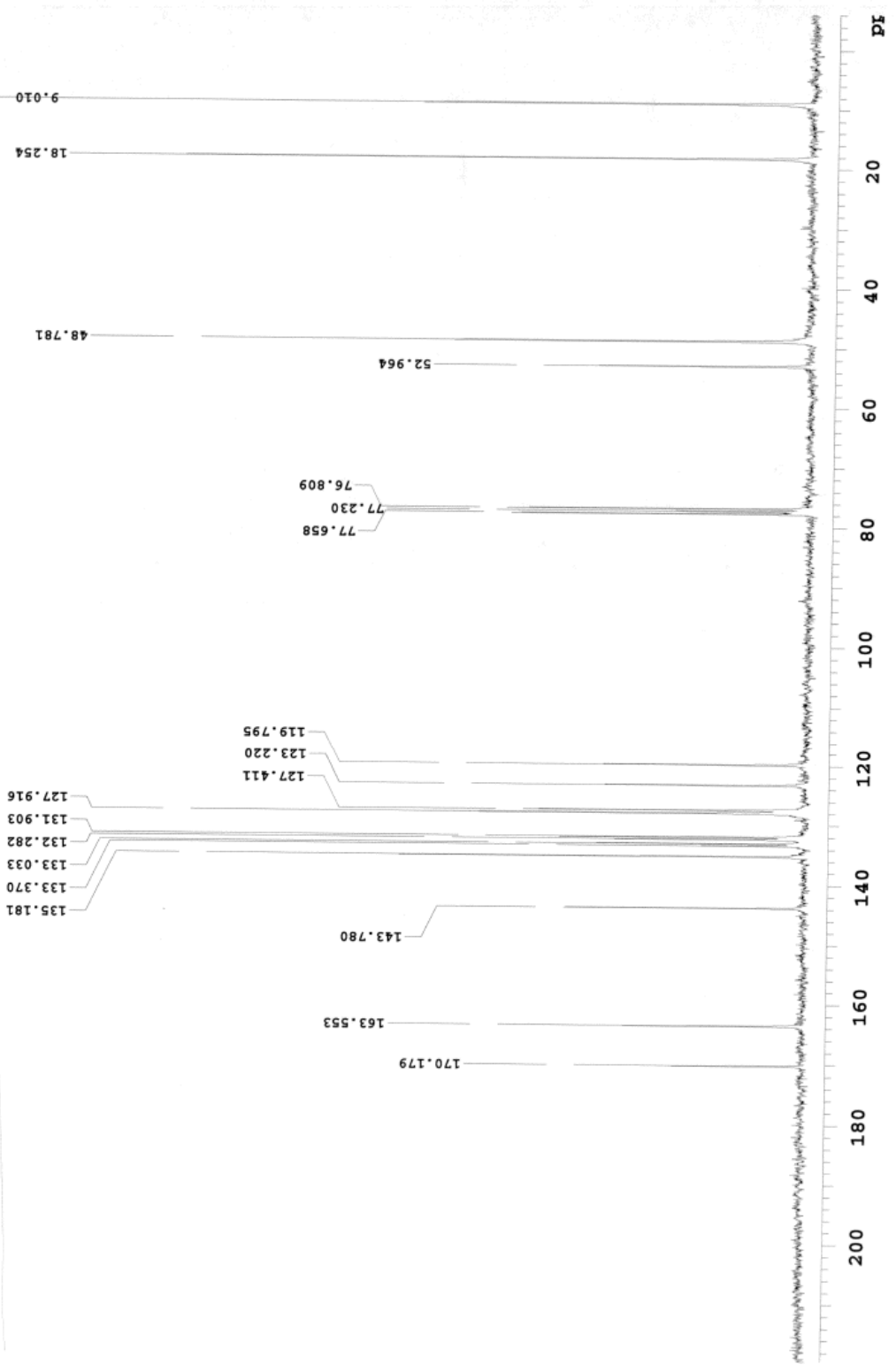
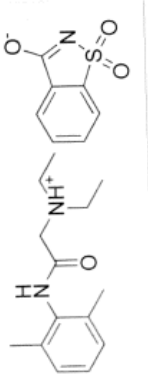
RUSH SERVICE  Rush service guarantees analyses will be completed and results available by 5pm EST on the day the sample is received by 11am.

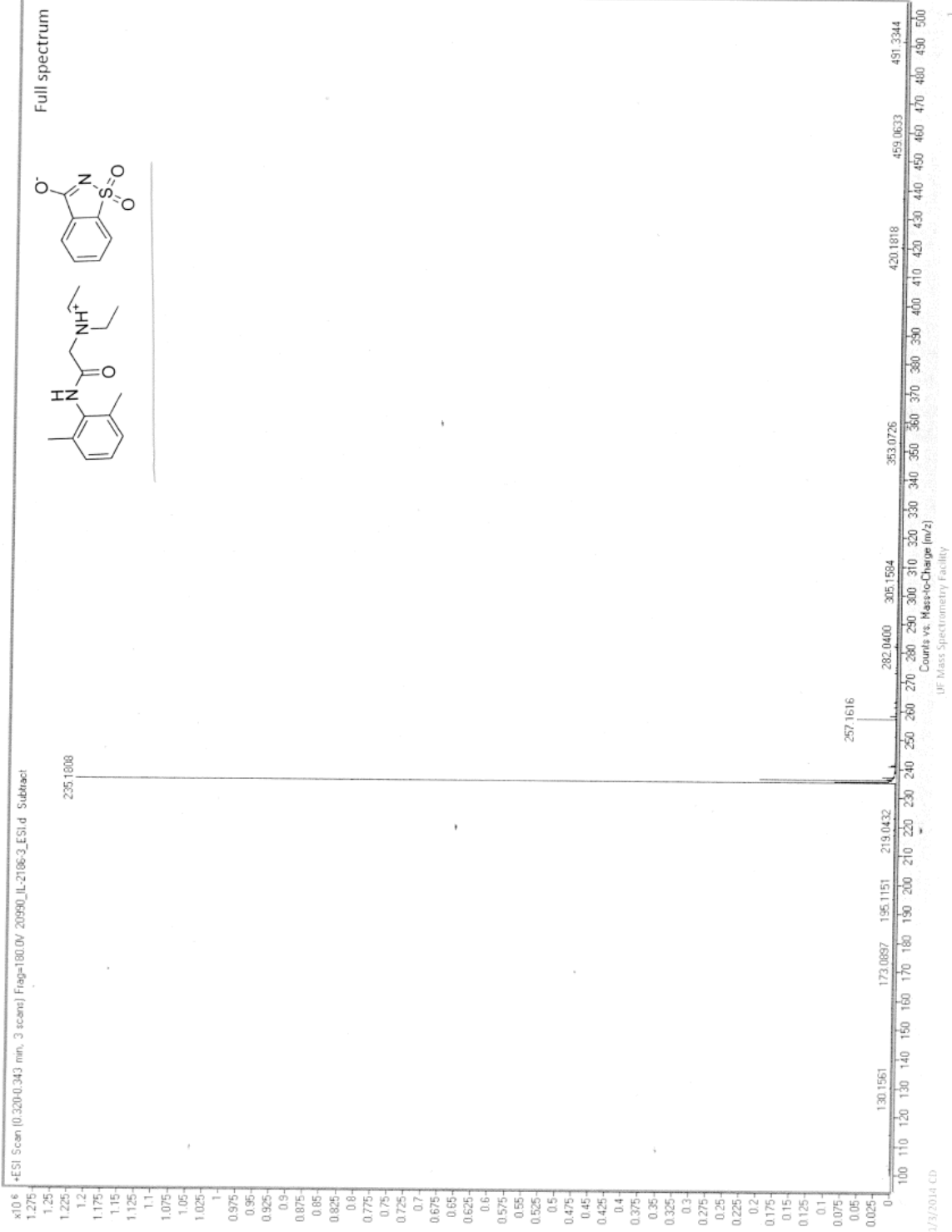
Include Email Address or Fax # Below  
alex@eigenchem.com

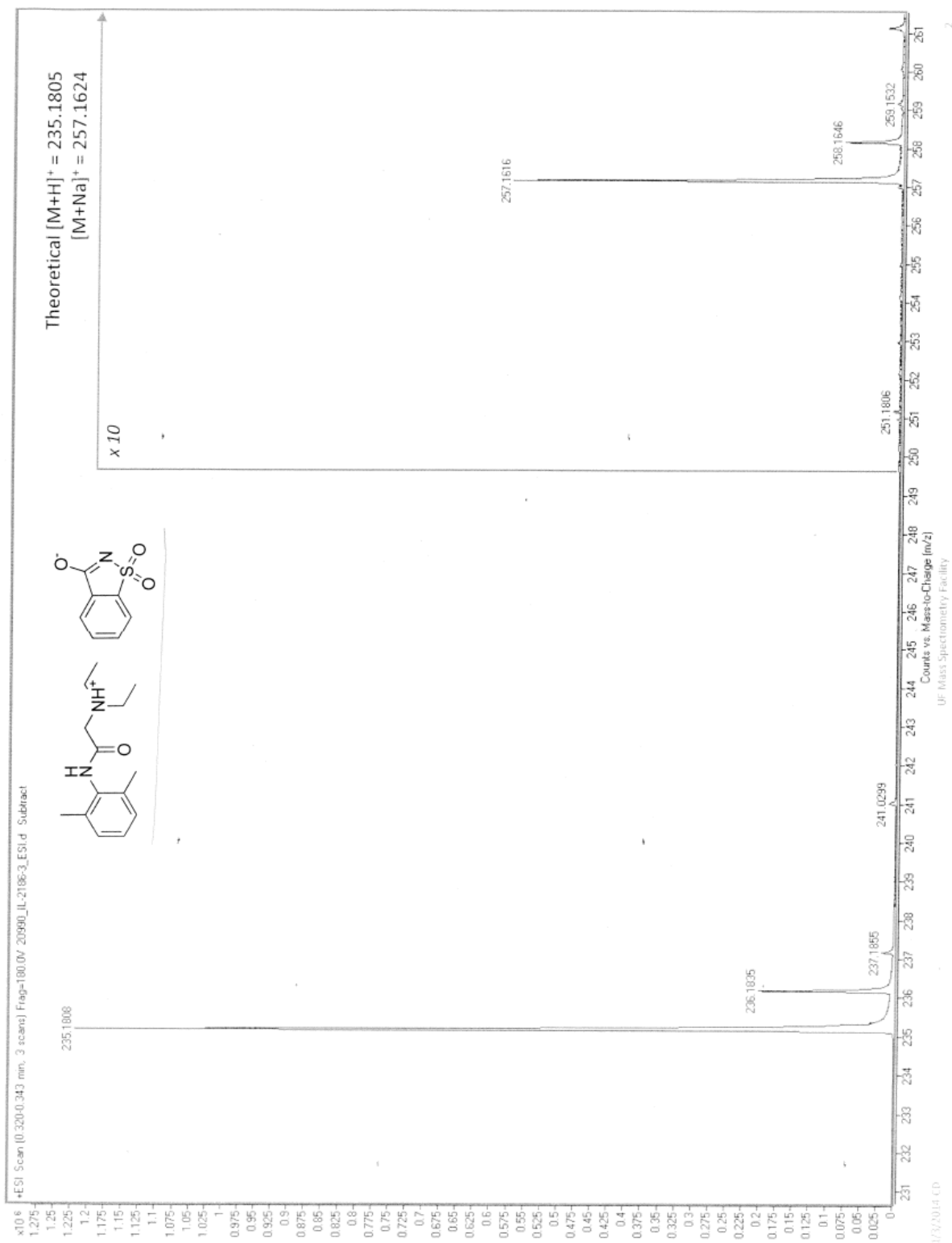
Date Received JUL 09 2013 Date Completed JUL 10 2013

Remarks:



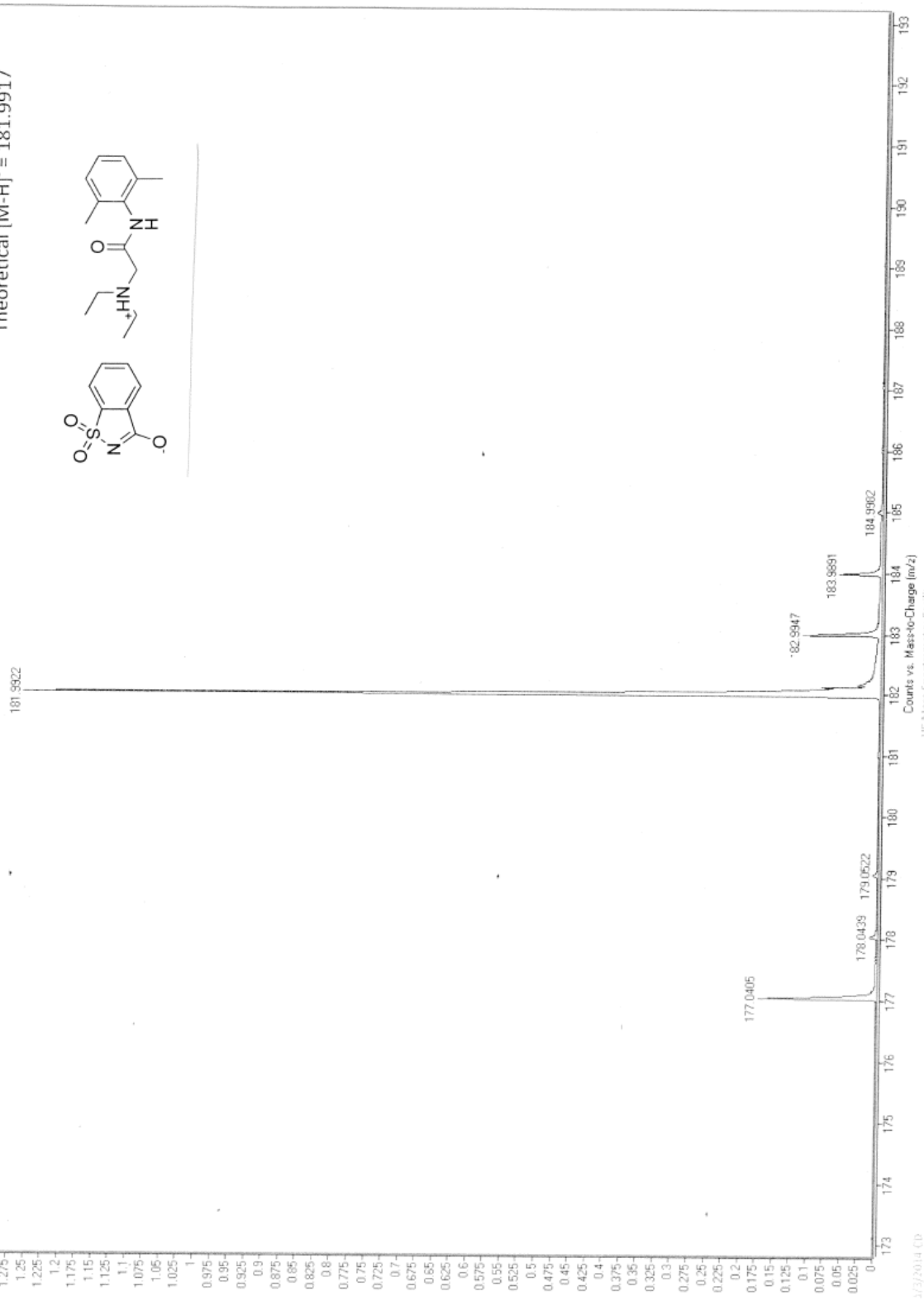
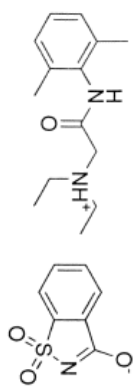




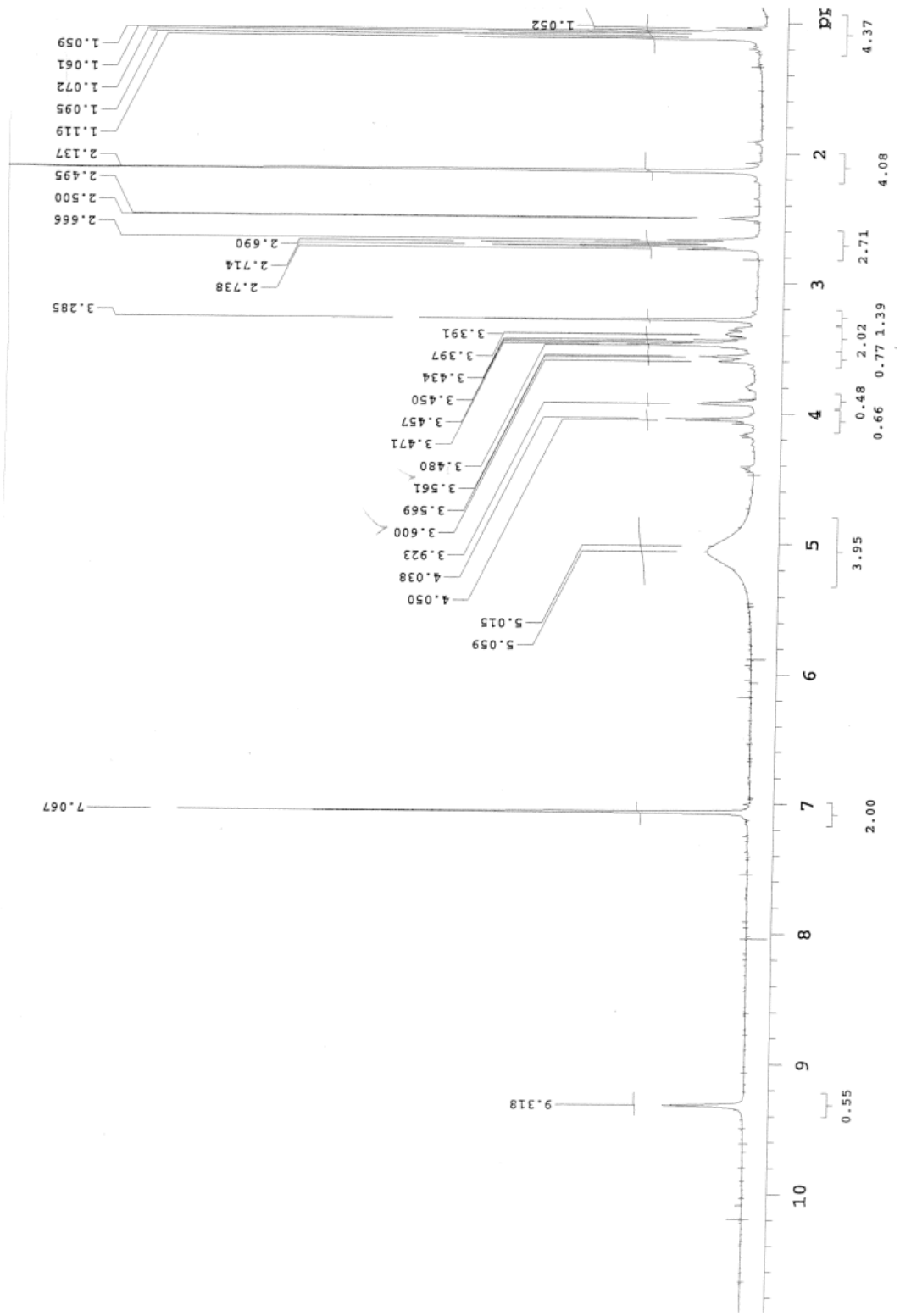
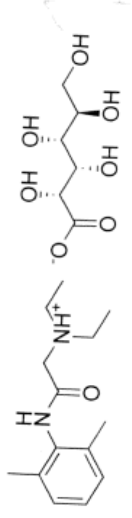


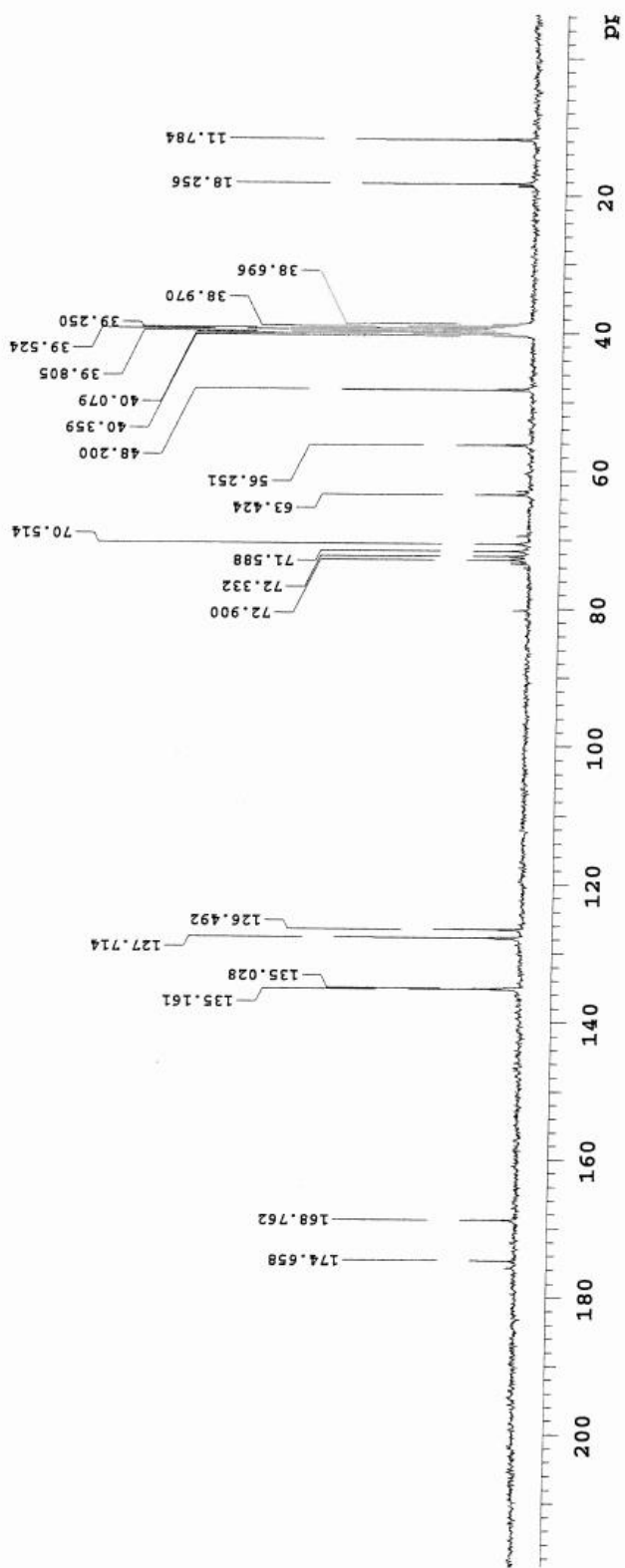
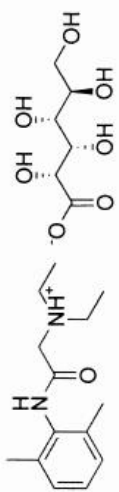
ESI Scan (0.111-0.125 min., 3 scans) Frag=180.0V 20990\_IL-2186-3\_ESI.mgd Subtract

Theoretical [M-H]<sup>-</sup> = 181.9917

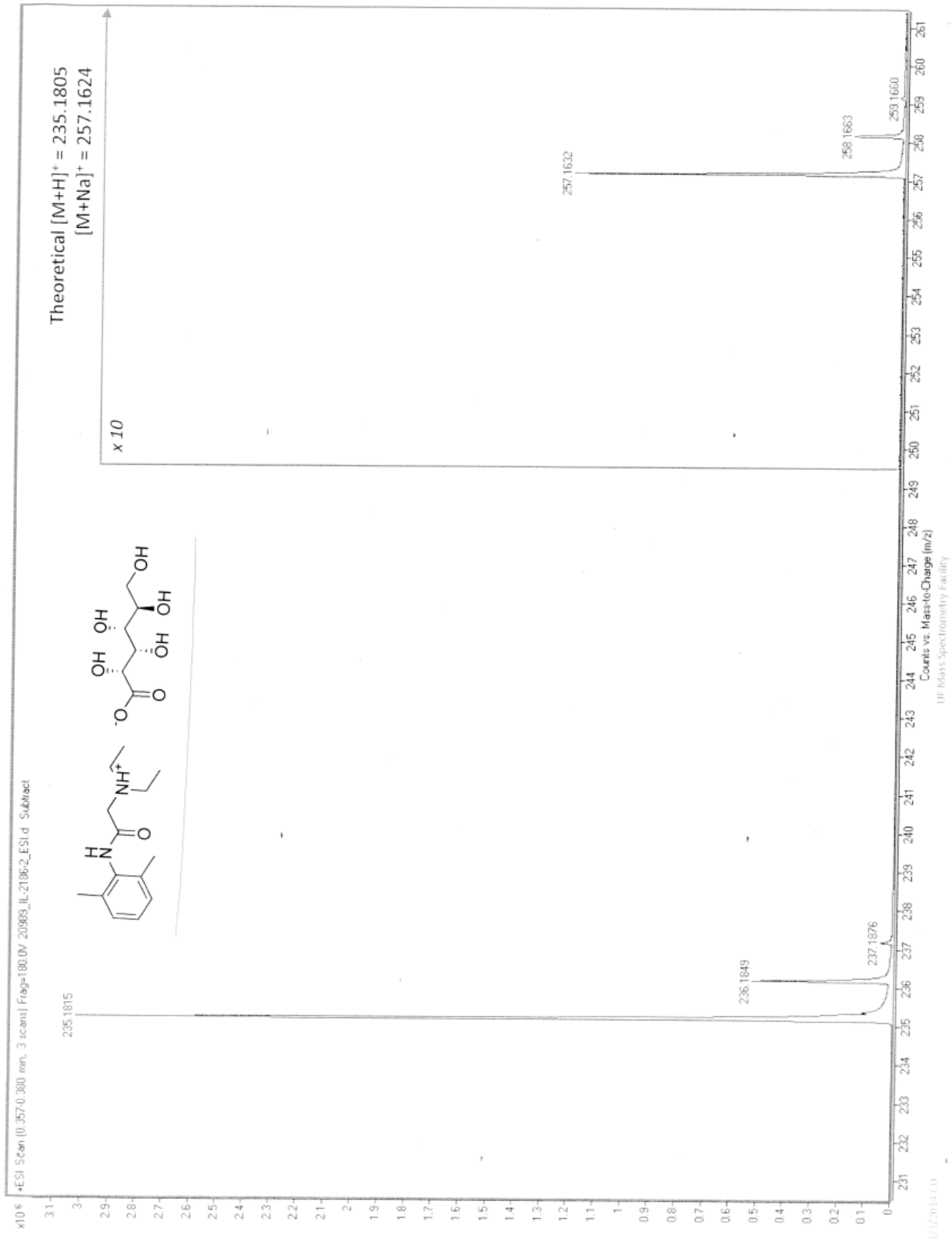


3/3/2014 CD

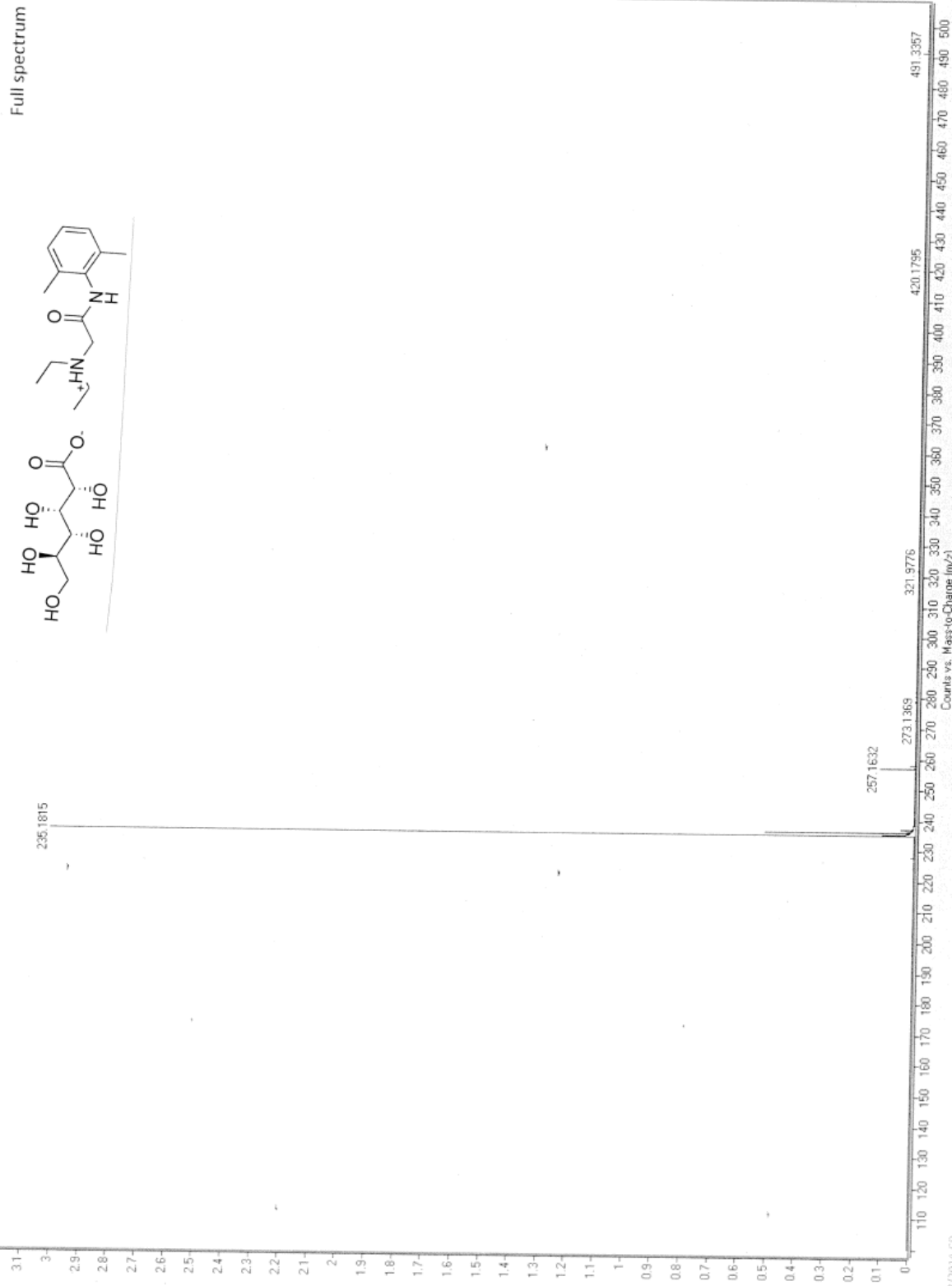








x10<sup>6</sup> +ESI Scan (0.357-0.380 min, 3 scans) Frag=180.DV.209689\_IL-2186-2\_ESI.d Subtract



3/3/2018 CD

UF Mass Spectrometry Facility

