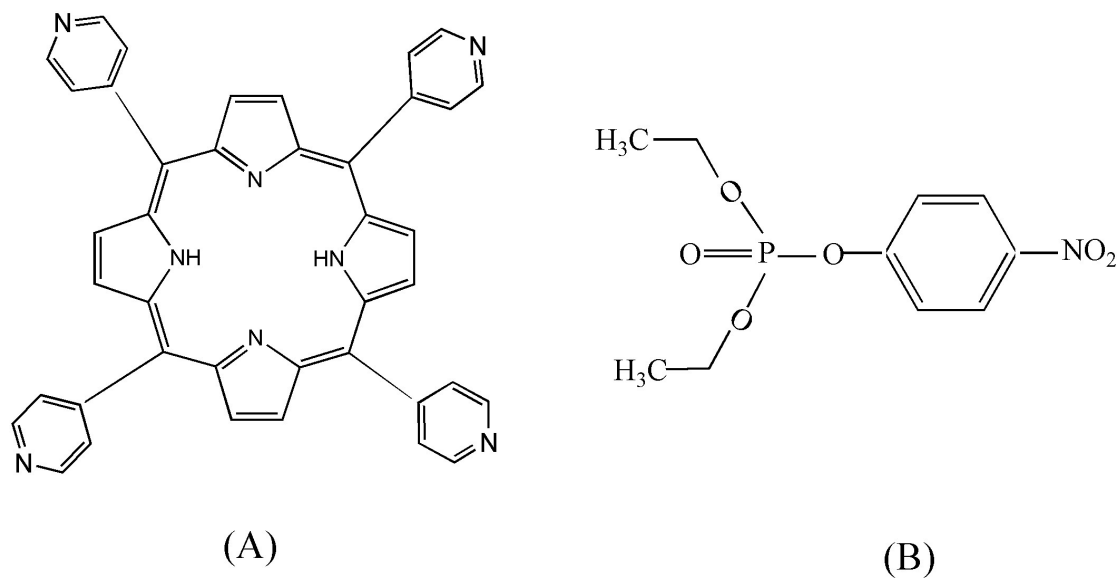
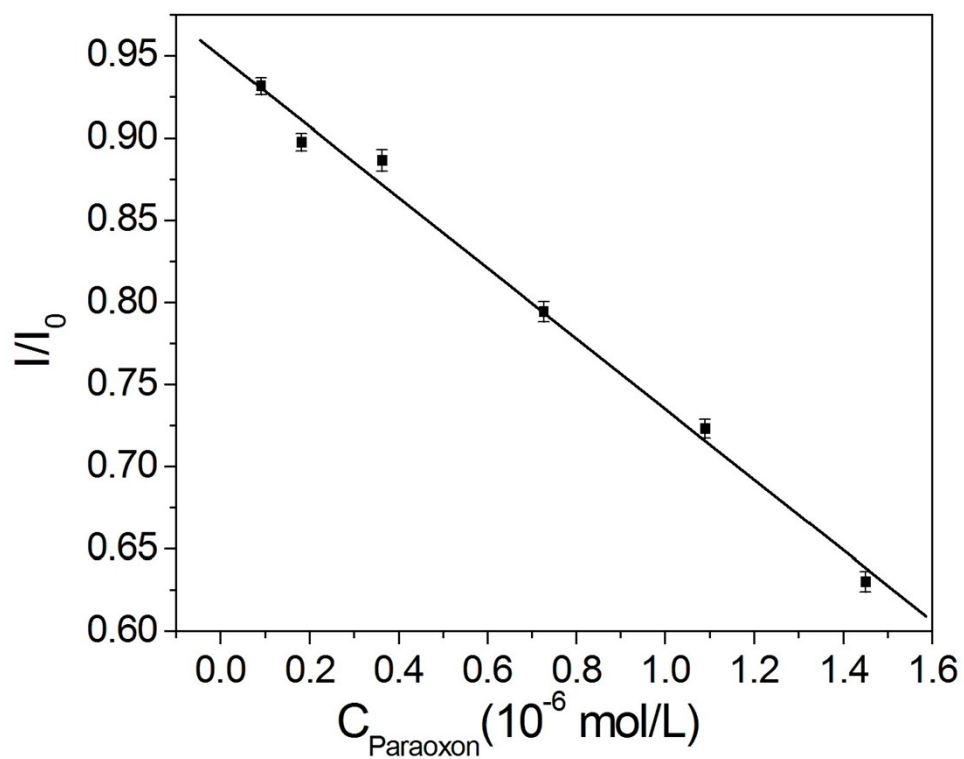


**SUPPORTING INFORMATION:**

**Sensitive fluorescence assay of organophosphorous pesticides based on the fluorescence resonance energy transfer between CdTe quantum dots and porphyrin**



**Fig. S1.** Molecular Structures of (A) TPyP and (B) paraoxon.



**Fig. S2.** The relationship between  $I/I_0$  ( $I$  and  $I_0$  refer to the fluorescence intensity of TPyP in the presence and absence of paraoxon, respectively) and the concentration of paraoxon.

