

## The enrichment of Pt(IV) ions onto Dowex-1X8 and Purolite S-920 ions exchangers from aqueous solutions and their determination using slurry sampling and direct solid graphite furnace atomic absorption spectrometry techniques

Electronic Supplementary Information (ESI)

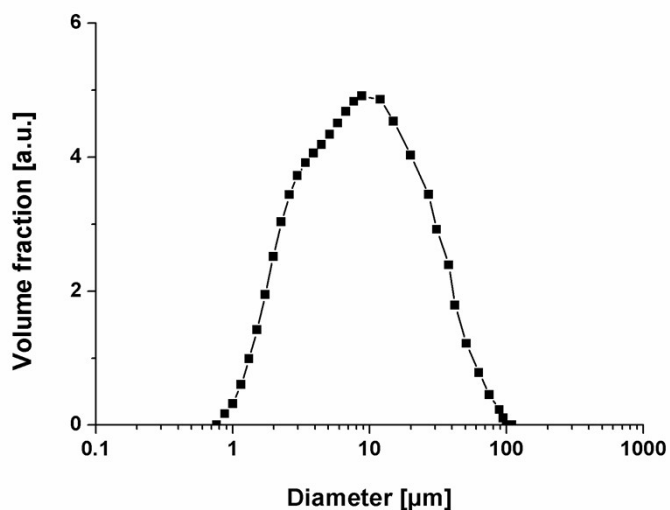


Fig. S1. Particle size distribution for Dowex 1-X8.

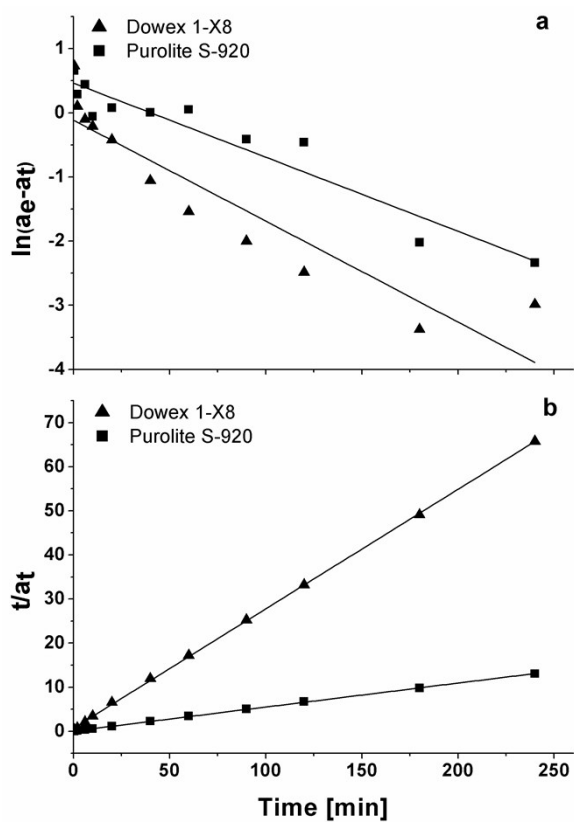
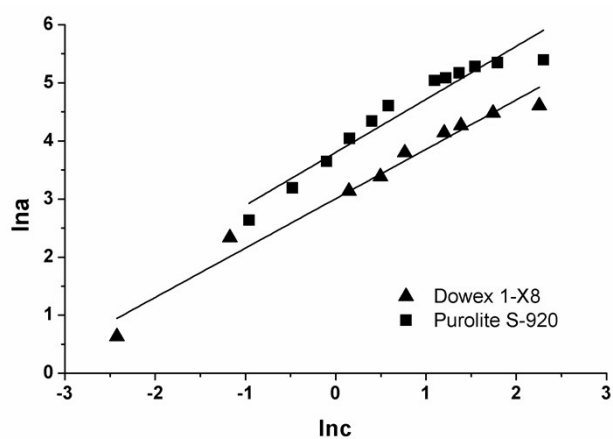


Fig. S2. The kinetic fitting plots of a) pseudo-first-order equation and b) pseudo-second-order equation for Pt(IV) adsorption onto ion exchangers.



**Fig. S3.** Linear dependences plotted according to equation(6) for the ions exchangers.

**Table S1.** Microwave heating program for digestion of CRMs and samples.

Conditions	Stage 1	Stage 2
Power [W]	600	600
Ramp [min]	5	5
Hold [min]	0	10
Pressure [psi]	300	300
Temperature [°C]	100	180