

Electronic Supplementary Information

Evaluation of a high-resolution micro-size magic angle spinning (HR μ MAS) probe for NMR-based metabolomic studies of nanolitre samples

Nghia Tuan Duong,^a Yuki Endo,^b Takahiro Nemoto,^b Hiroshi Kato,^b Anne-Karine Bouzier-Sore,^c Yusuke Nishiyama^{a,b} and Alan Wong^{*,d}

a) RIKEN CLST-JEOL Collaboration Center, Tsurumi, Yokohama, Kanagawa 230-0045, Japan

b) JEOL RESONANCE Inc., 3-1-2 Musashino, Akishima, Tokyo 196-8558, Japan

c) Centre de Résonance Magnétique des Systèmes Biologiques, CNRS-Université de Bordeaux, UMR5536, Bordeaux, France

d) NIMBE, CEA, CNRS, Université Paris-Saclay, CEA Saclay, 91191, Gif-sur-Yvette, France

**corresponding author, E-mail: alan.wong@cea.fr*

Table S1 Peak assignments	p2
Figure S1 Handling tools	p3
Figure S2 MAS profile	p4
Figure S3 HR-MAS spectra	p5

Table S1. Tentative peak assignments of the identified metabolites found in liver and brain extracts.

assigned index	¹ H shift / ppm (multiplicity)	metabolite	abbreviation
1	1.33(d), 4.11(q)	lactate	lac
2	1.48(d)	alanine	ala
3	1.91(t), 2.30(t)	γ-aminobutyric acid	GABA
4	2.02(s), 2.51(dd), 2.68(dd), 4.39(dd)	N-acetyl aspartate	NAA
5	2.04(s)	N-acetylaspartylglutamate	NAAG
6	2.06(m), 2.35(m), 3.76(m)	glutamate	glu
7	2.12(m), 2.45(m), 3.76(m)	glutamine	gln
8	2.37(s)	pyruvate	
9	2.40(s)	succinate	suc
10	2.81(dd)	aspartate	asp
11	3.04(s), 3.93(s)	creatine/phosphocreatine	Cr/PCr
12	3.19(s)	choline	cho
13	3.21(s)	phosphorylcholine	PC
14	3.22(s)	glycerophosphocholine	GPC
15	3.26(m), 3.43(t)	taurine	tau
16	3.28(t), 3.55(t), 3.63(t), 4.06(m)	<i>myo</i> -inositol	m-ins
17	3.56(s)	glycine	gly
18	3.3-3.9(m), 4.65(d), 5.23(d)	glucose	glc
19	6.14(d), 8.22(s)	inosine or adenosine triphosphate	Ino/ATP
20?	3.01(m)	lysine?	lys
21	2.65(s)	citrate	–
22	3.53(dd)	glycerol	–

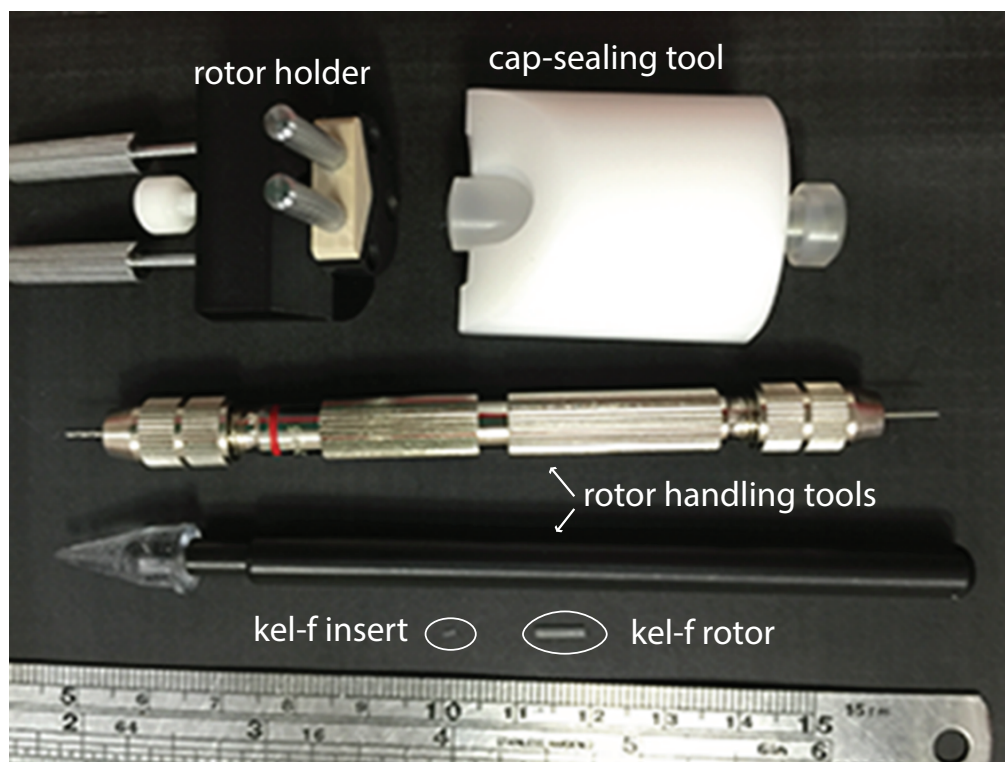


Figure S1. Custom-made tools for the sample preparations.

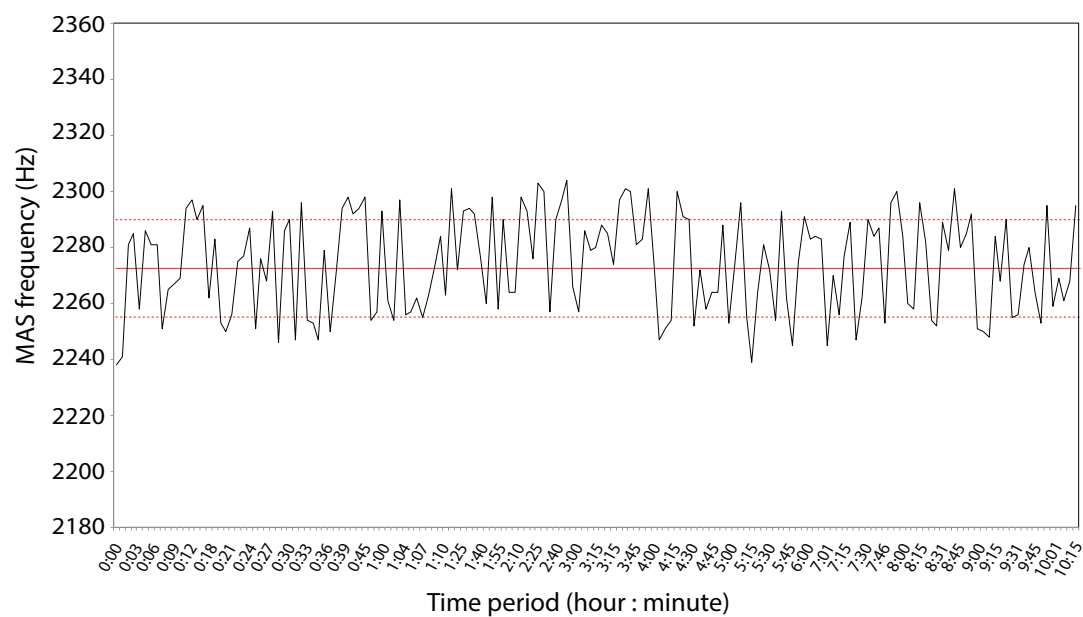


Figure S2. MAS profile of HR μ MAS using a JEOL MAS pneumatic unit. It shows the fluctuation of the spinning frequency over a 10-hour timespan with a mean frequency of 2275 Hz (solid red line) with a standard deviation of ± 17 Hz (dashed red lines).

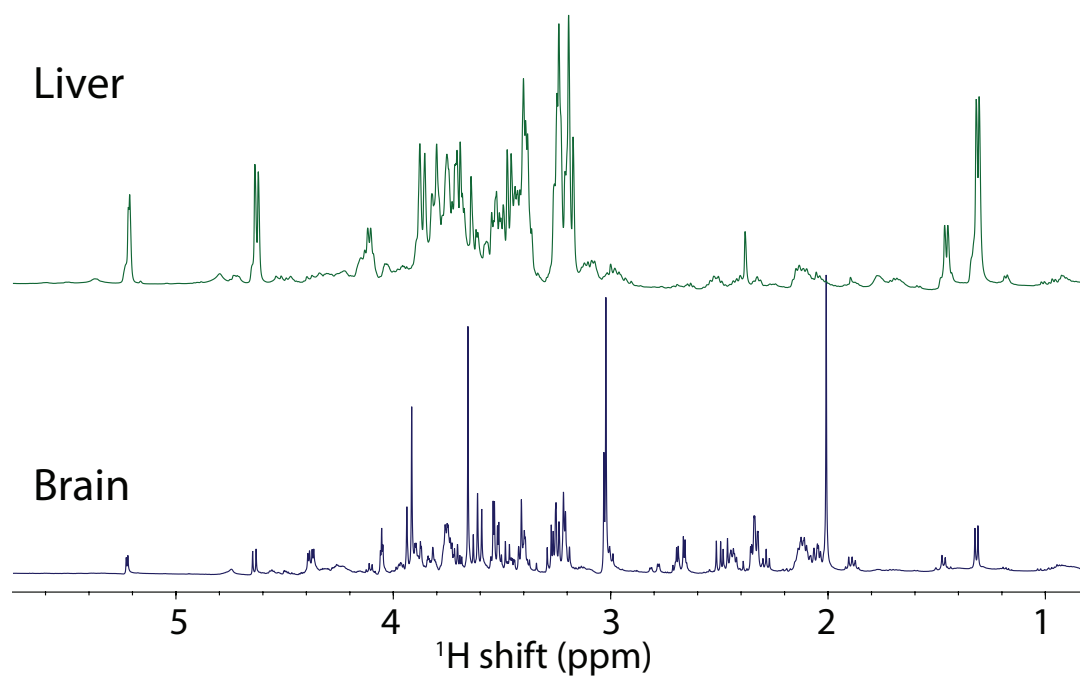


Figure S3. ^1H HR-MAS NMR spectra of liver and brain extract with a significant high sample mass concentration, ~ 7 g/ml and ~ 6 g/ml, respectively. The sample volume is about $50 \mu\text{l}$. The spectra were acquired at a 500 MHz Bruker spectrometer with a water-suppression single-pulse experiment. A total of 256 scans were collected with a 8 s recycle delay.