

Electronic Supplementary Information(ESI) for

Enhanced luminol chemiluminescence by Co-Fe
LDH nanoplates and its application in H₂O₂ and
glucose detection

**Jianxin Xie,^{a,*} Wenjing Chen,^a Xianxue Wu,^a Yunying Wu,^a Hong
Lin,^a**

^aCollege of Resources and Environment, Yuxi Normal University, Yuxi, Yunnan
653100, P. R. China

* To whom correspondence should be addressed. E-mail: xjx11228@163.com, Tel.: +86 -877-2052169

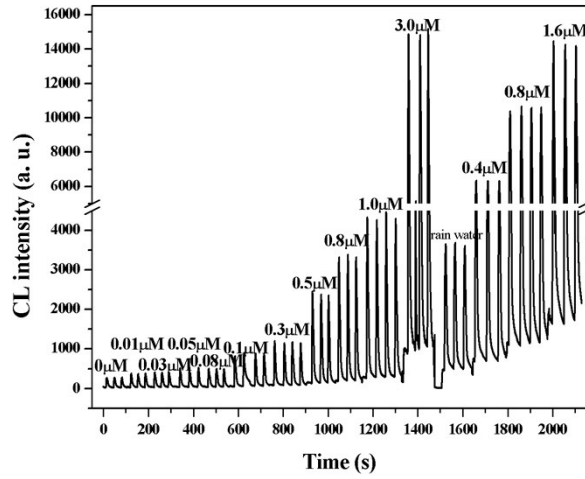


Fig. S1 The analytical record of the H_2O_2 standard curve and rain water sample determination

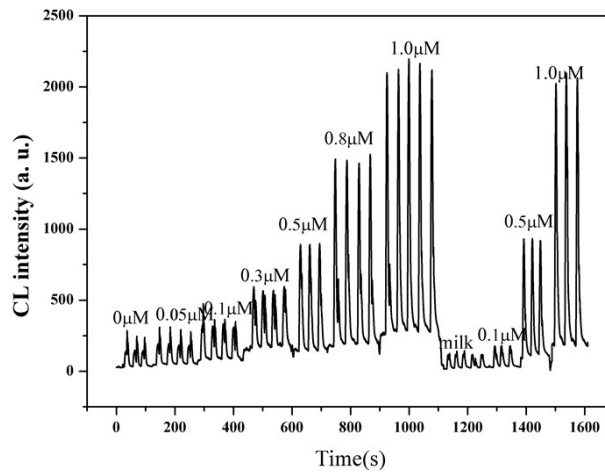


Fig. S2 The analytical record of the H_2O_2 detection in milk water sample and the spiked recovery

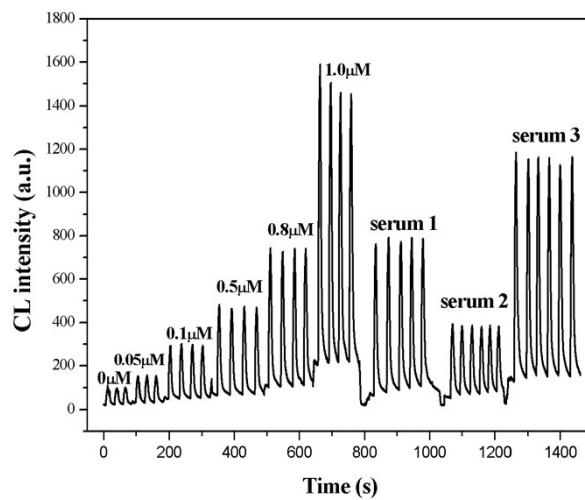


Fig. S3 The analytical record of the glucose detection in serum sample