

[1] HPLC chromatograms of standard and EBN sample were shown in Figure 1.

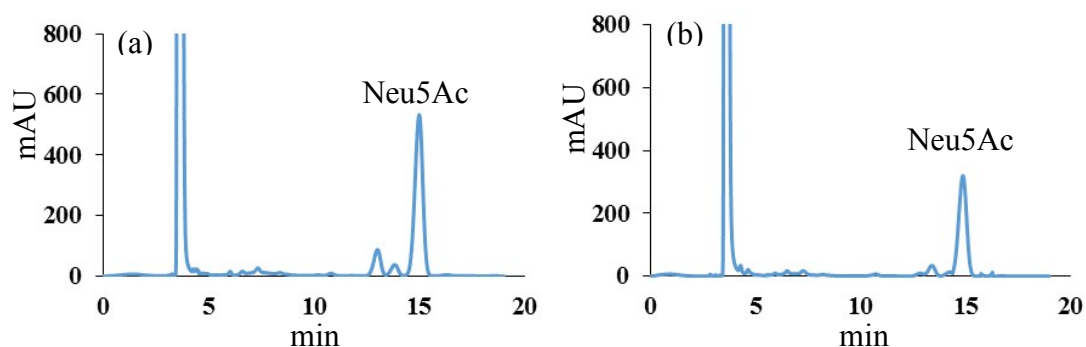


Figure 1 HPLC chromatograms of standard (a) and an EBN sample (b)

[2] Data of the standard curve were shown in Table 1 and Figure 2.

Table 1 data of the standard curve

No.	1	2	3	4	5	6	7	8	9	10	11
C(ug/ml)	0.1	1	5	10	25	50	100	200	400	750	1000
Areas	1531	38255	148402	277139	679957	1338476	2687706	5110677	9972187	18289088	24184689

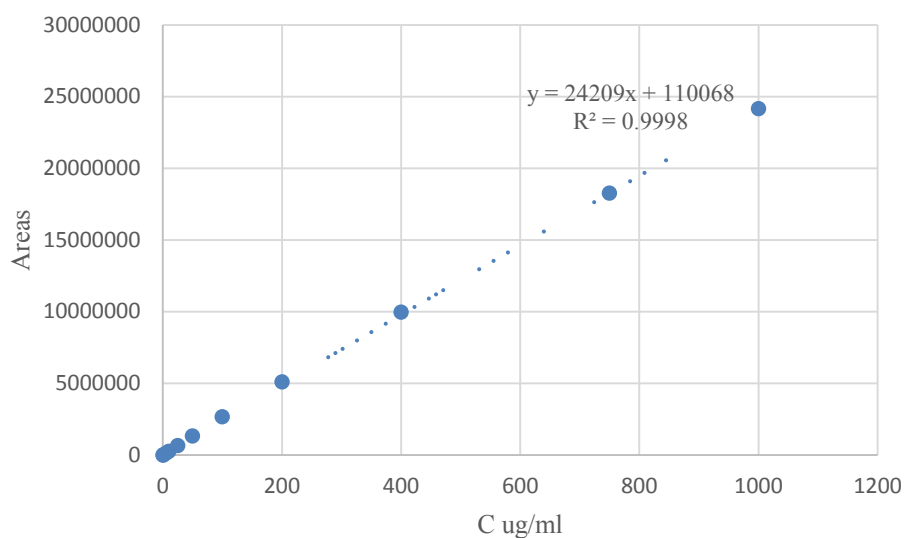


Figure 2 the standard curve used in this study

[3] The raw spectral data of genuine/adulterated EBN samples and the raw spectral after SNV preprocessing were shown in Figure 3.

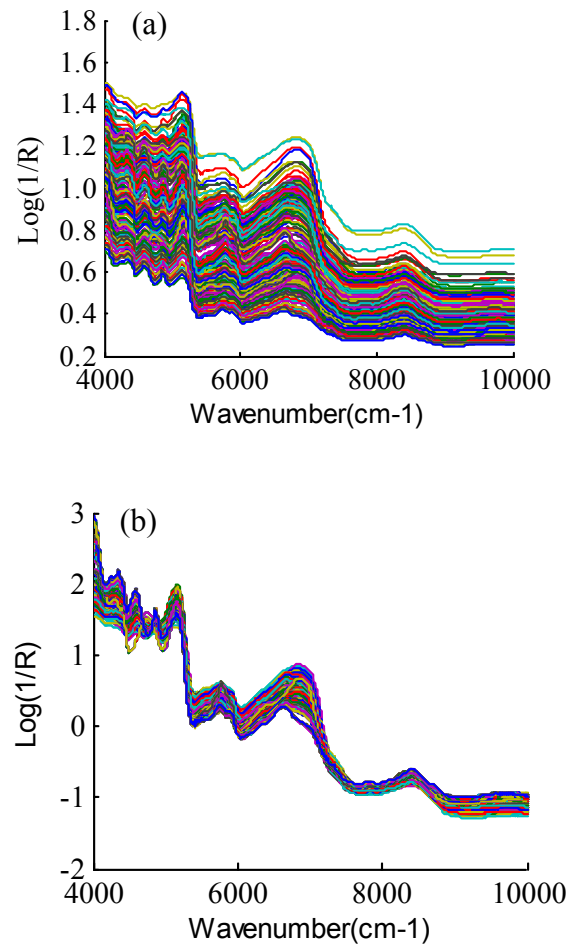


Figure 3 raw spectra (a), preprocessed NIR spectra (b) of genuine/adulterated EBNs

[4] The raw spectral data of PDO ENBs and the raw spectral after SNV preprocessing were shown in Figure 4.

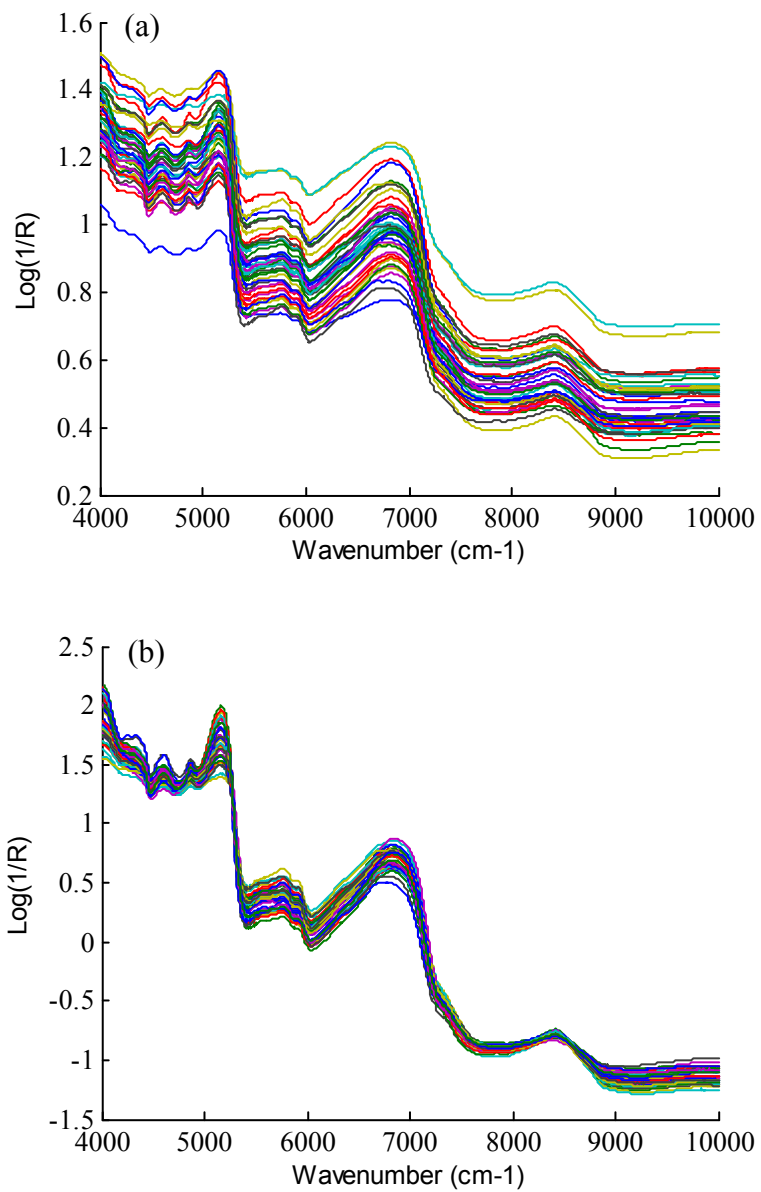


Figure 4 the raw spectral data of PDO ENBs (a) and the raw spectral after SNV preprocessing (b)