

Electronic supplementary Materials

Transcription of G-quartet Supramolecular Aggregates into Hierarchical Mesoporous Silica Nanotubes

Liang Min^{a, b}, Tao Li^c, Qi Tan^a, Xiaoping Tan^a, Wu Pan^a, Li He^a, Jie Zhang^a, Encai Ou^{*a}, Weijian Xu^{*a}

^aState key Labrotory for chemo/biosensing and chemometrics, college of chemistry and chemical engineering, Hunan University, Changsha, 410082, P. R. Chian. E-mail: weijxu@hnu.edu.cn (Weijian Xu) ouencaionc@aliyun.com (Encai Ou)

^bDepartment of Resources and Environmental Sciences, Baoshan College, Baoshan, Yunnan, 678000, P. R. China

^cCollege of Materials science and Engineering, Hunan Universtity, Changsha, 410082, P. R. China.

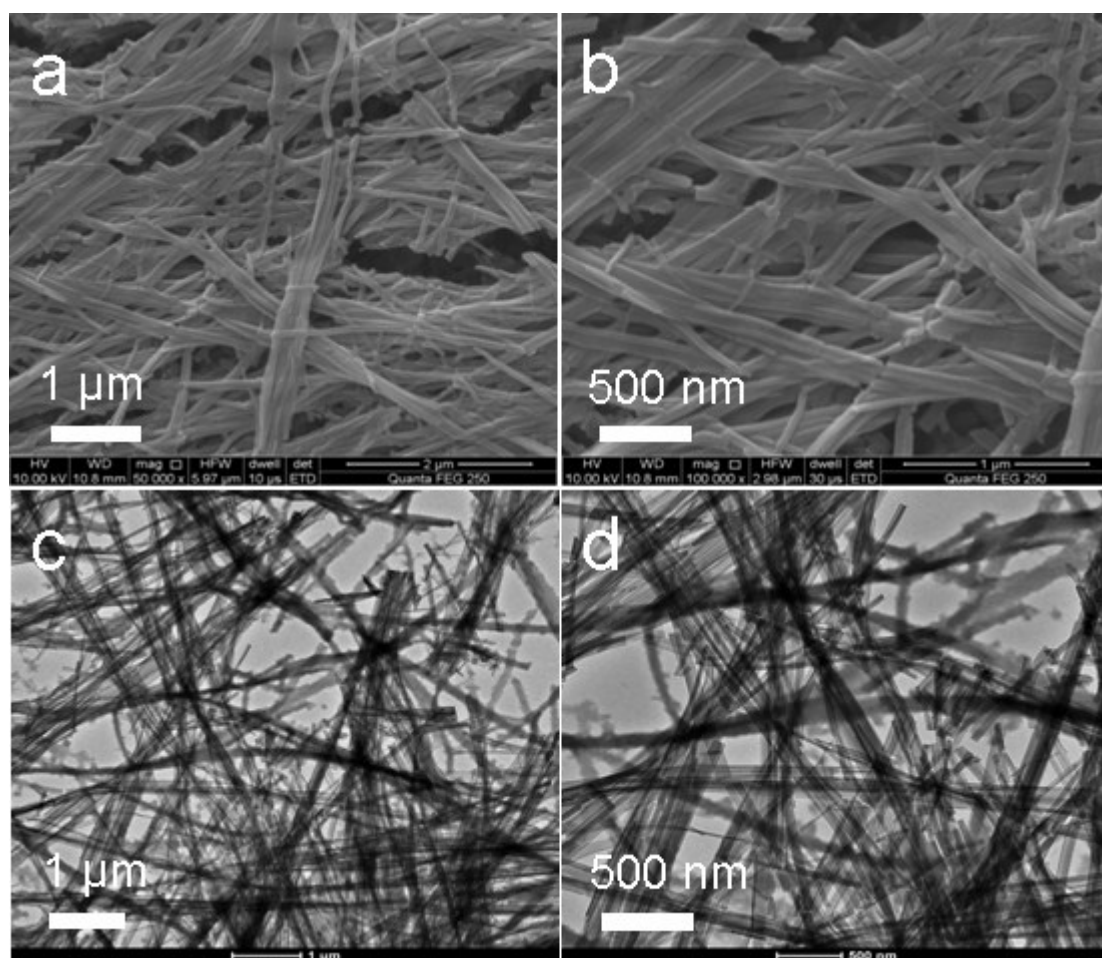


Fig. S1. SEM images of G-quartet supramolecular templates (a, b), and its corresponding TEM images (c, d).

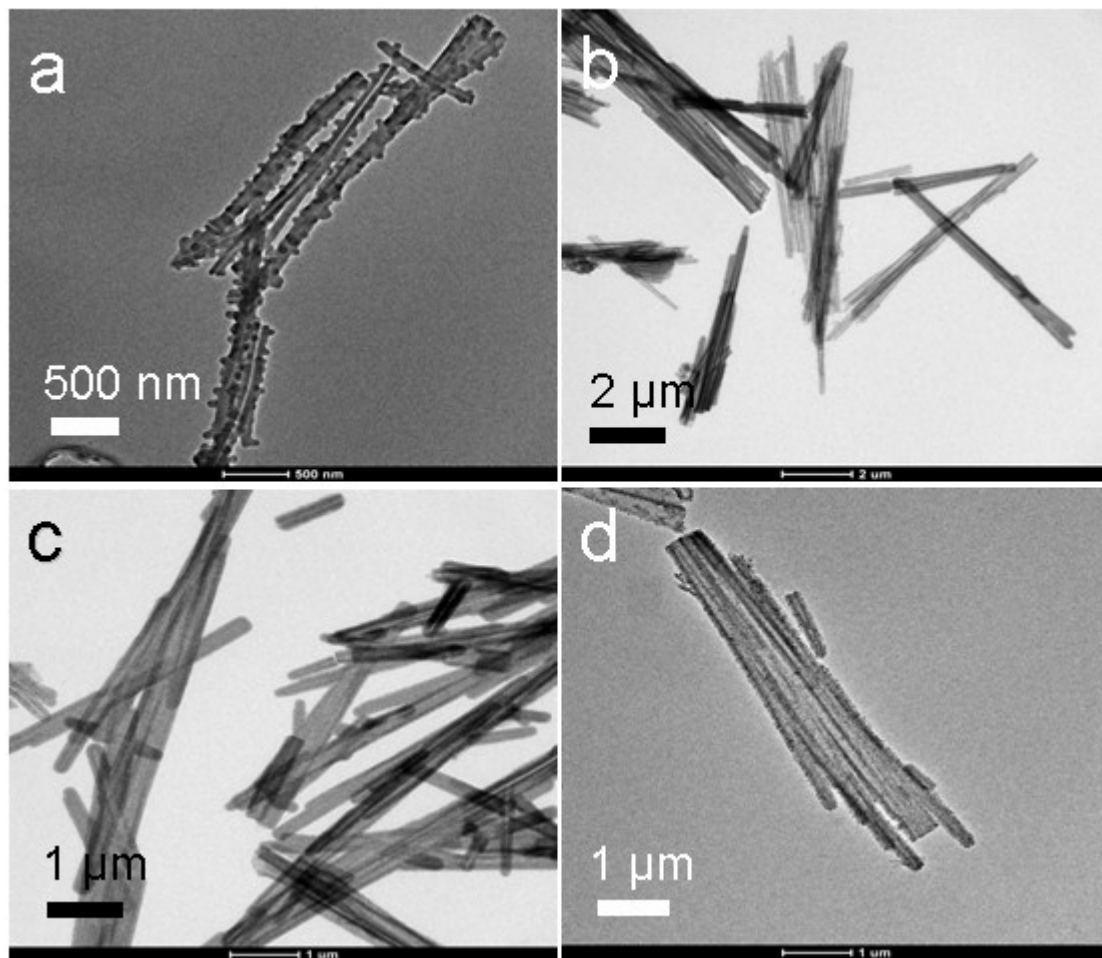


Fig. S2 TEM image of as-obtained-a (a), e-GMP-a (b), c-GMP-a (c) and Au adsorbed e-GMP-a (d).

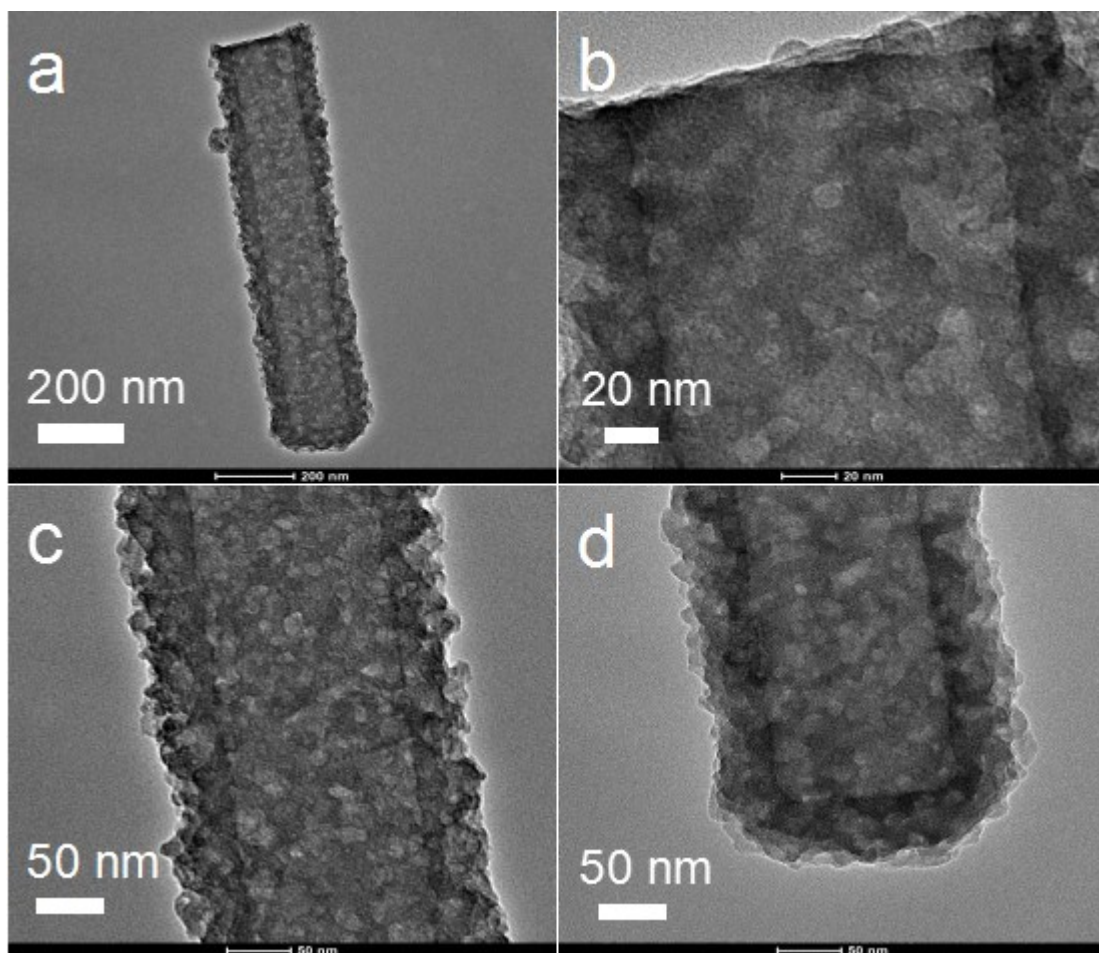


Fig. S3 TEM images of eGMP-a, and image a shows one end closed nanotube, and images of b-d is magnified picture of the nanotube in the image a.

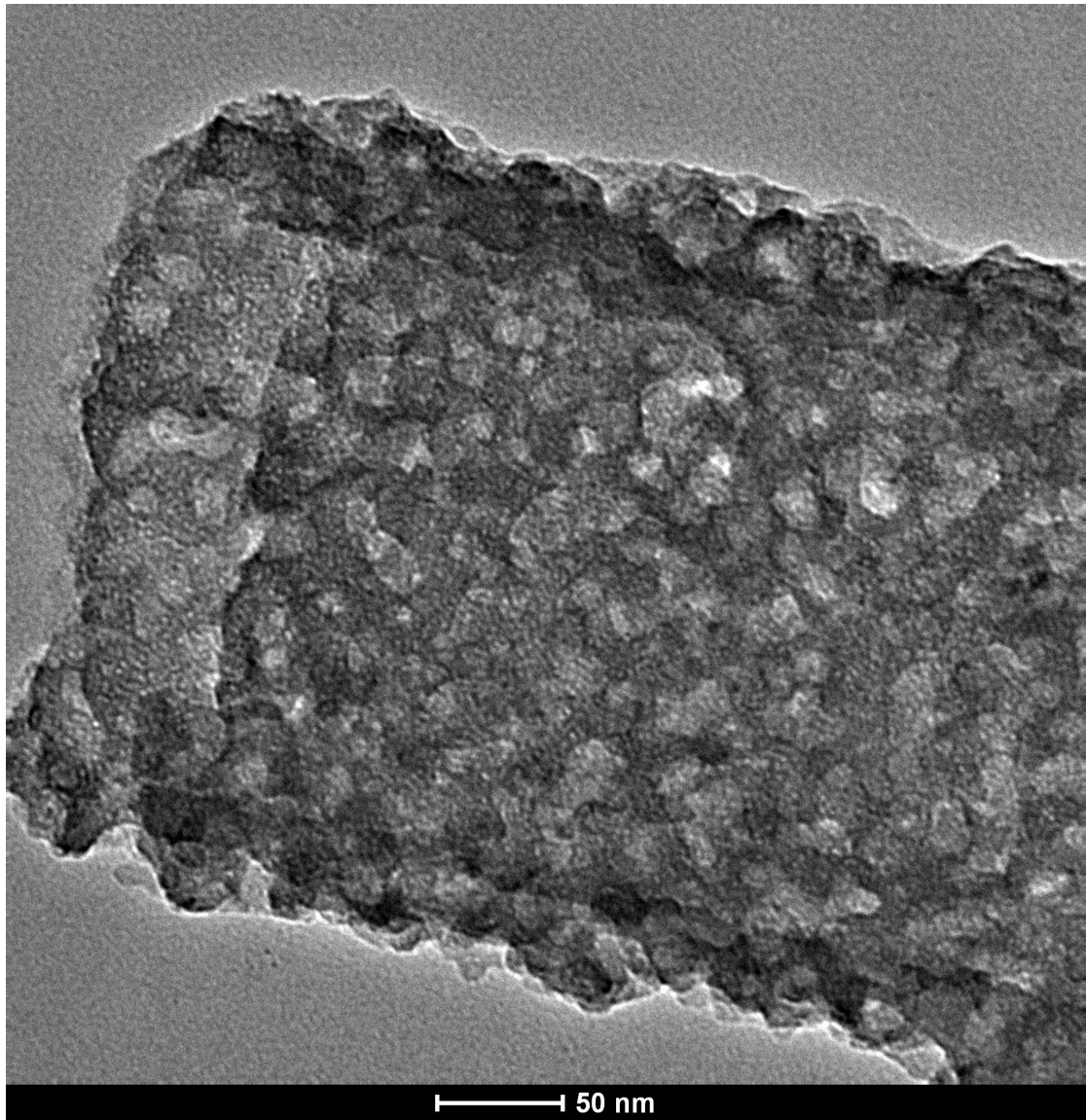


Fig. S4 TEM image of eGMP-a.

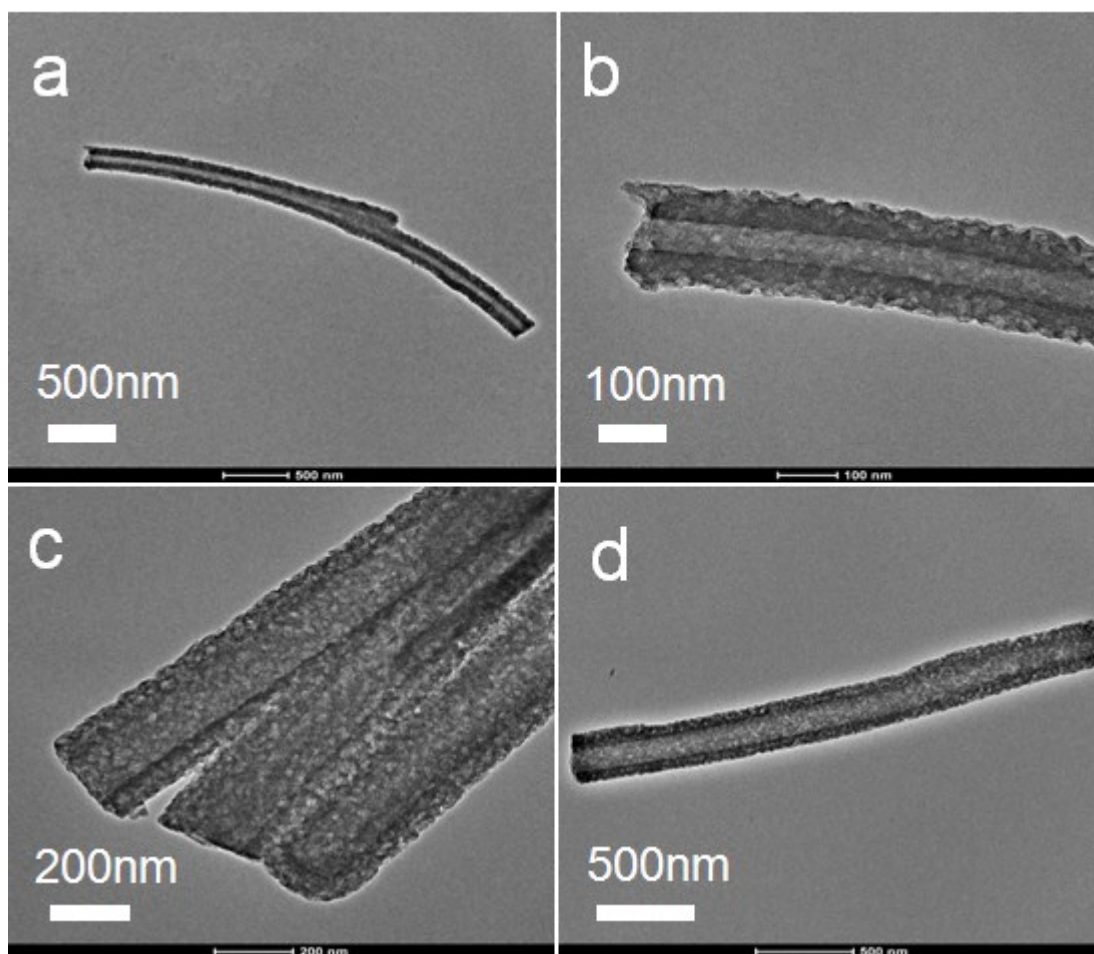


Fig. S5 TEM images of cGMP-a, and image b is magnified picture of the end part of nanotube in the image a; and image c shows one end closed nanotube, and curved nanotubes are spotted as it showed in image a and d.

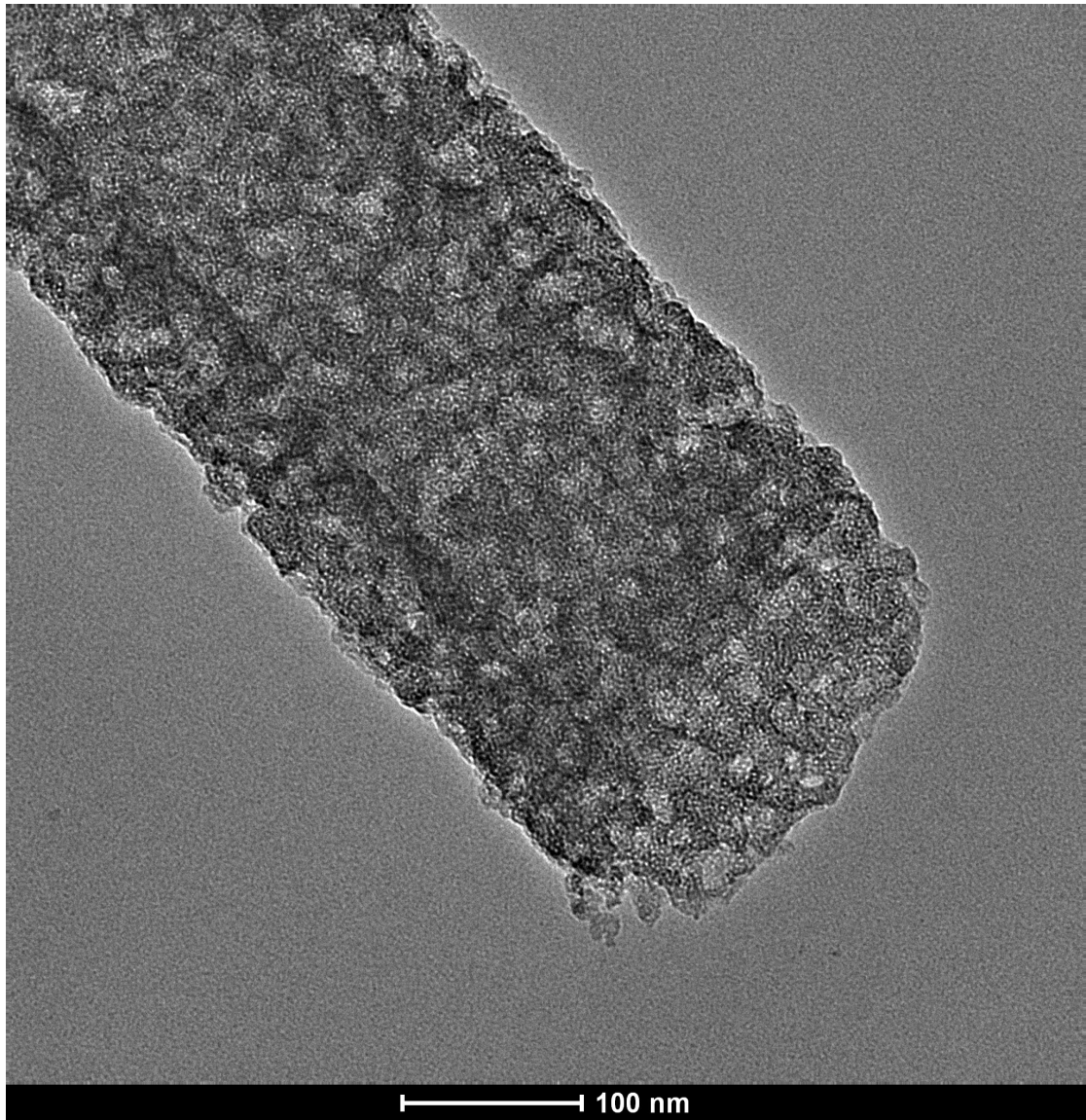


Fig. S6 TEM image of cGMP-a..

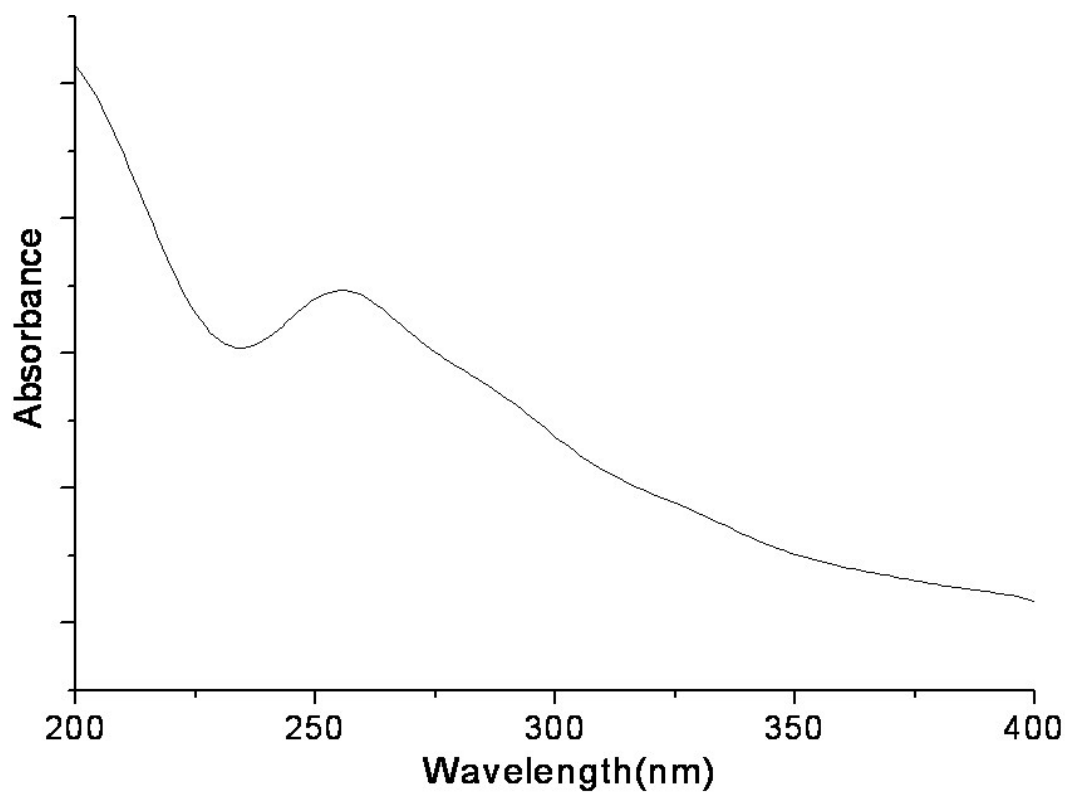
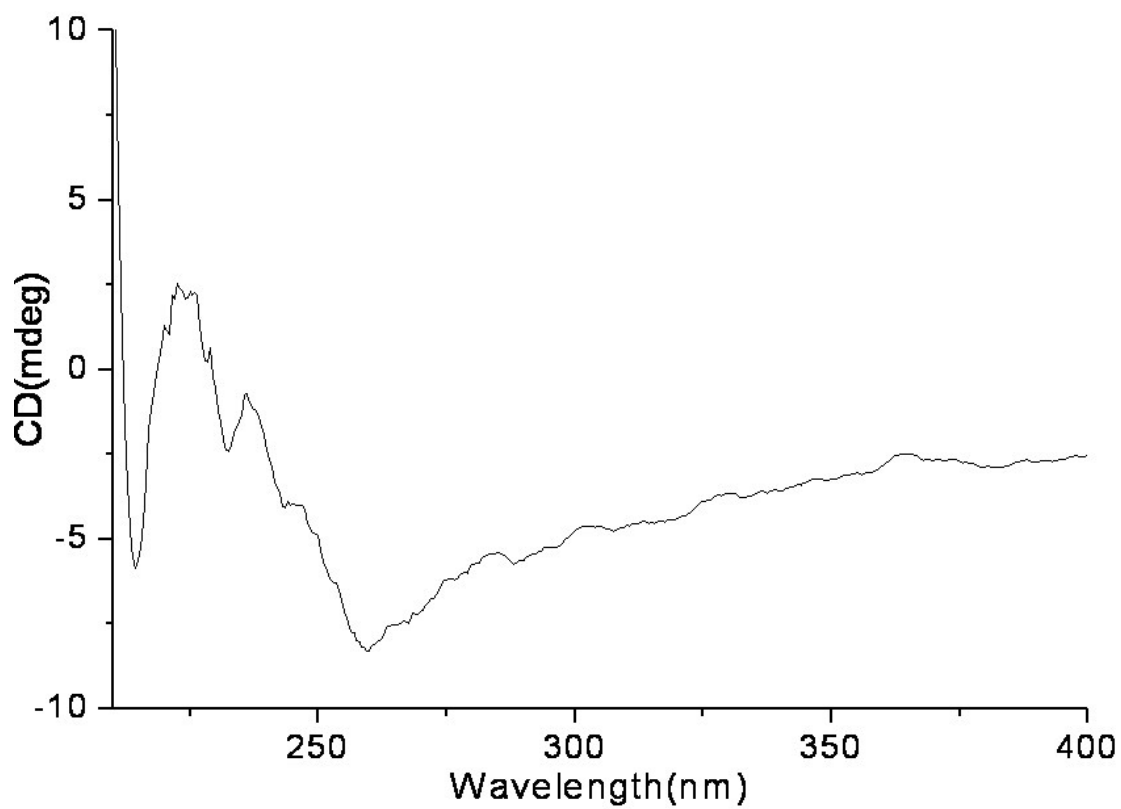


Fig. S7 Solid circular dichroism curve of h-GMP-a and its corresponding absorbance curve.

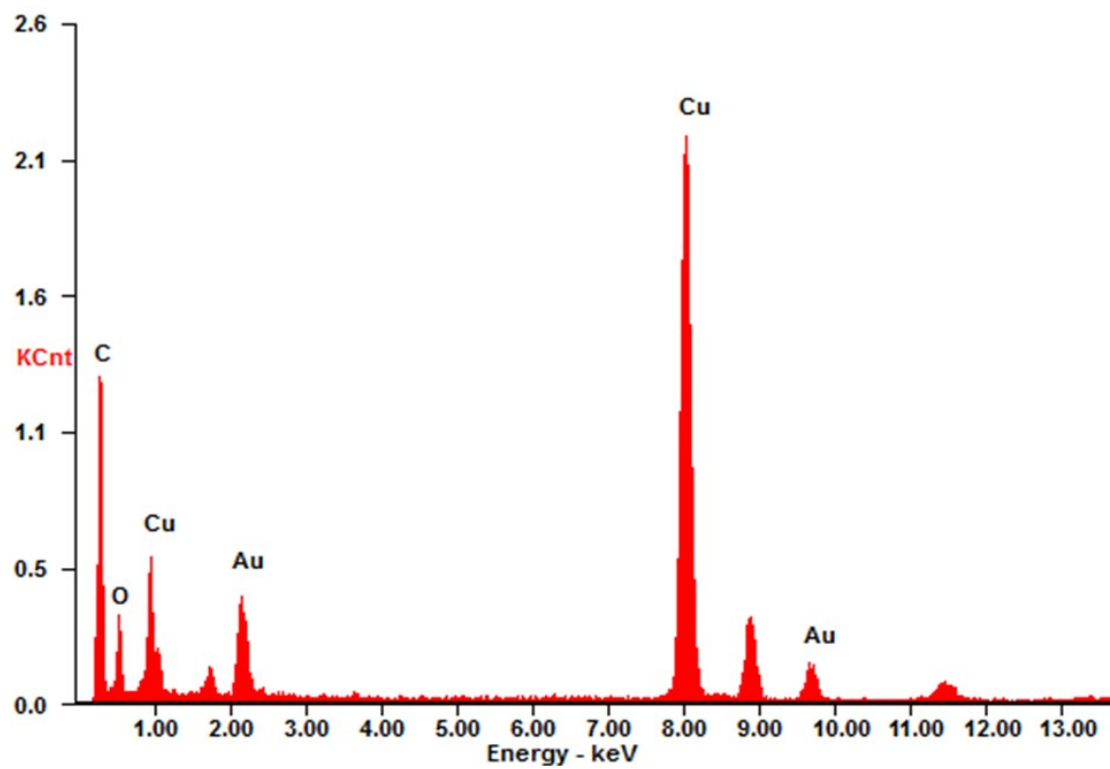
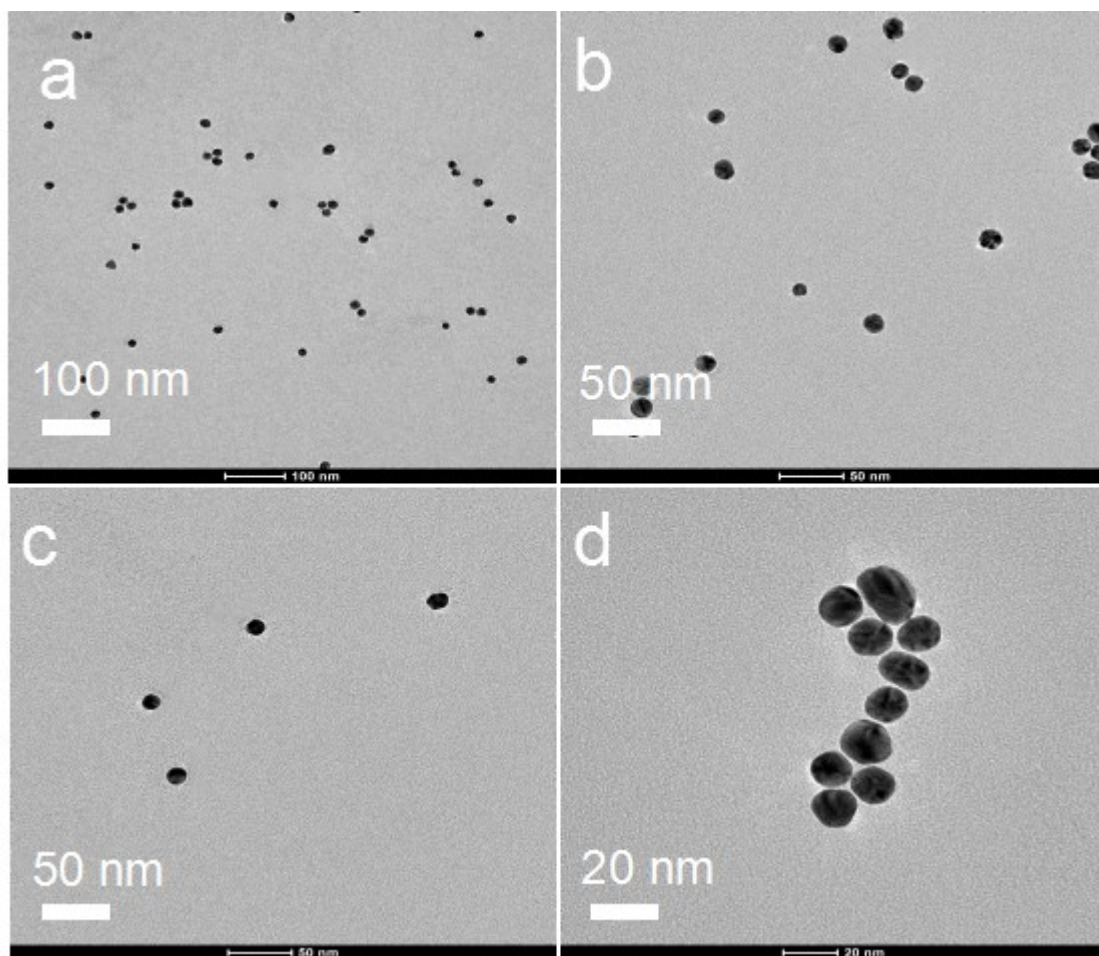


Fig. S8 TEM of Au nanoparticles and its corresponding energy dispersion x-ray spectrum.

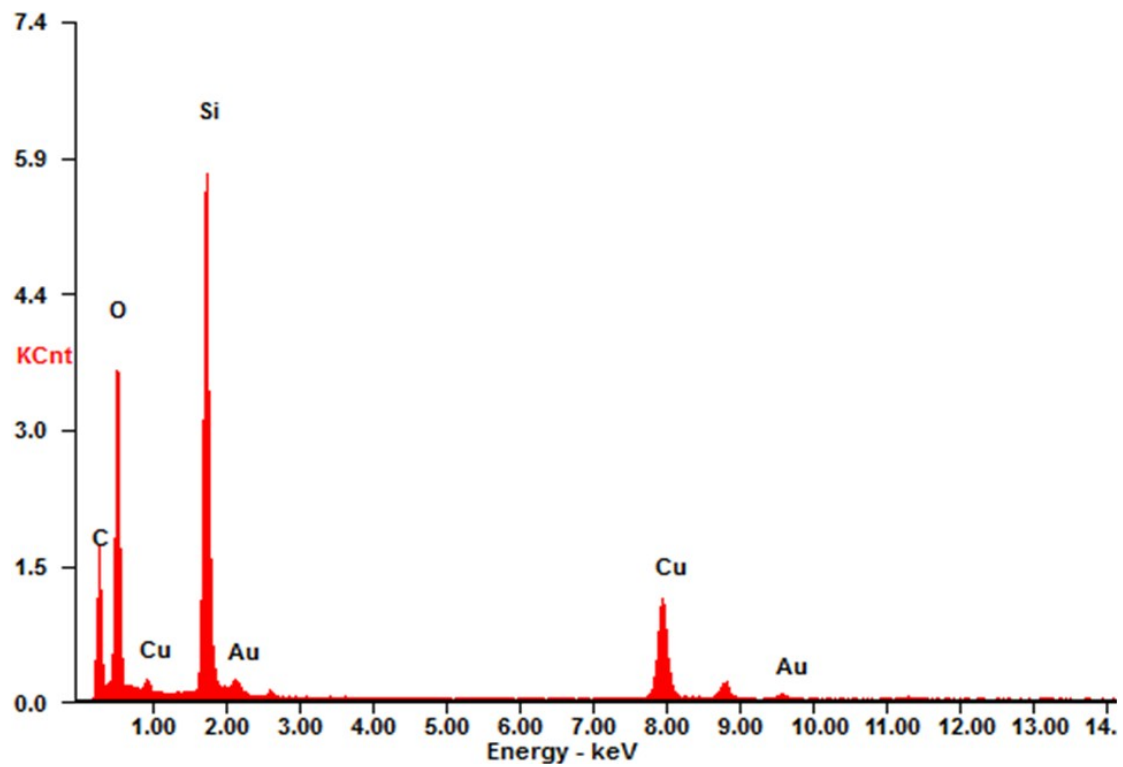


Fig. S9 Energy dispersion x-ray spectrum of Au nanoparticles adsorbed e-GMP-a

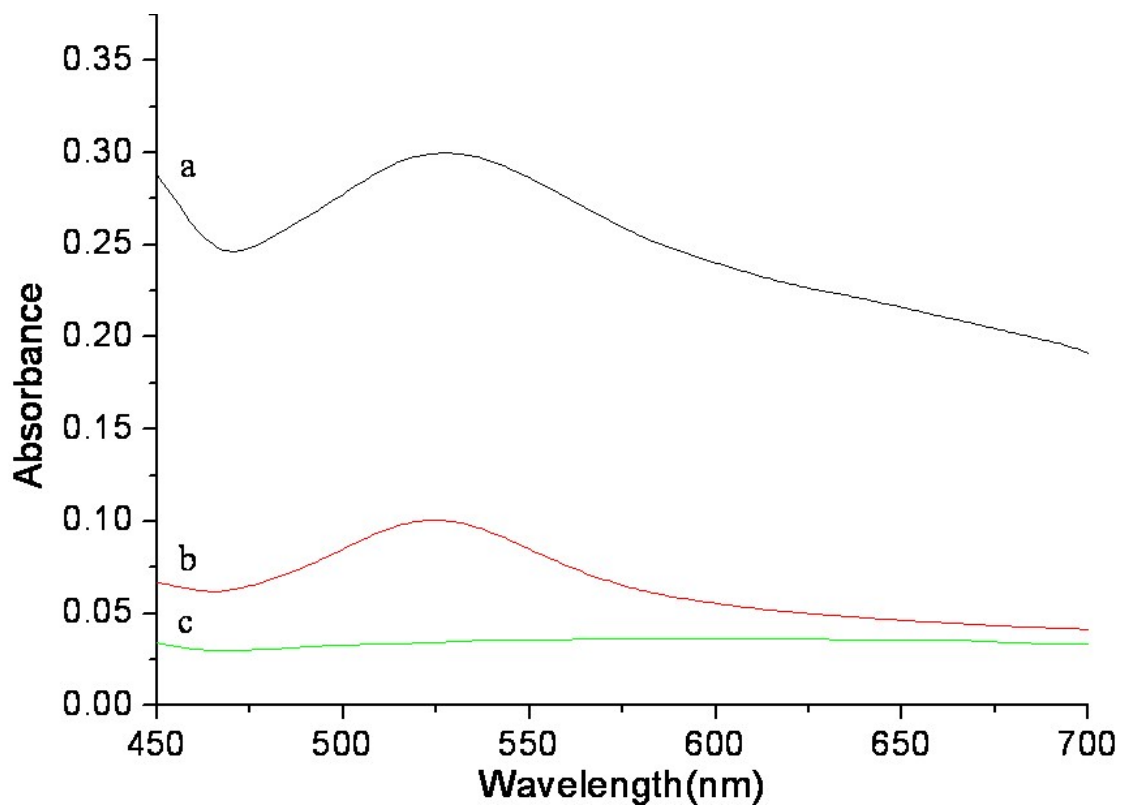
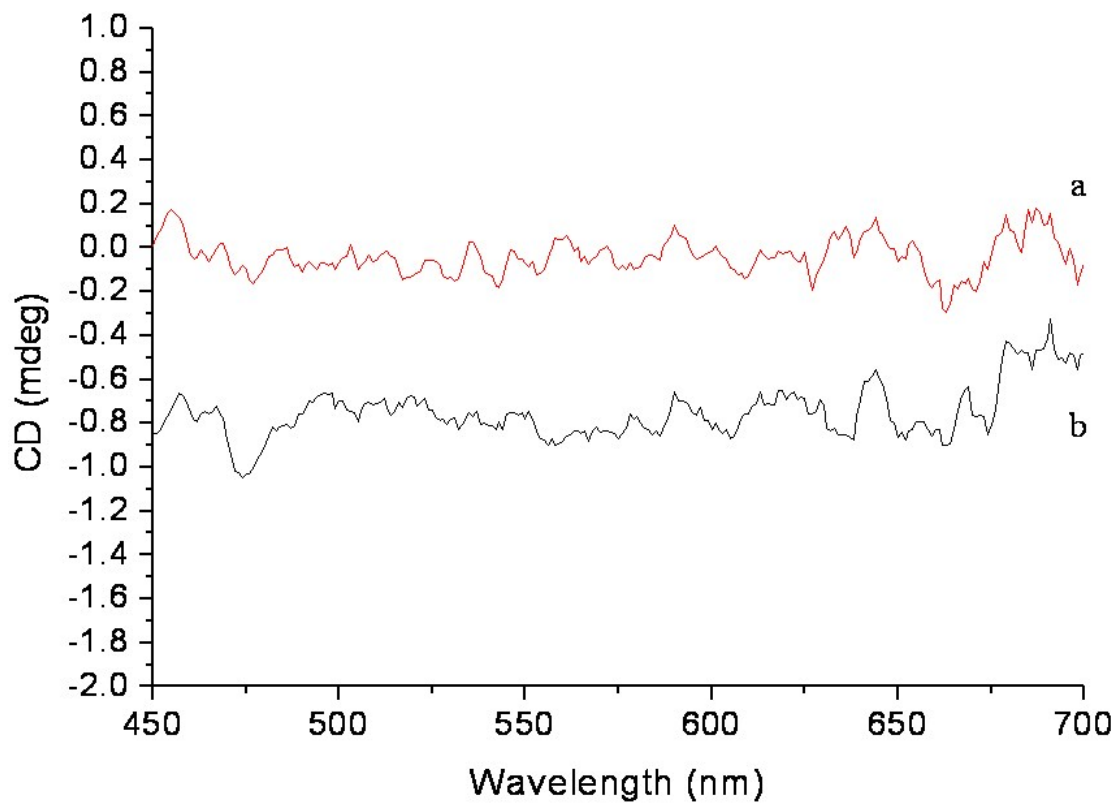


Fig. S10 Circular dichroism curve of Au nanoparticles (a) and Au nanoparticles adsorbed eGMP-a (b) and their corresponding absorbance curve of Au nanoparticles (b) and Au nanoparticles adsorbed eGMP-a (a); curve c is the absorbance of supernatant of Au nanoparticles adsorbed eGMP-a solution after half an hour stationary.

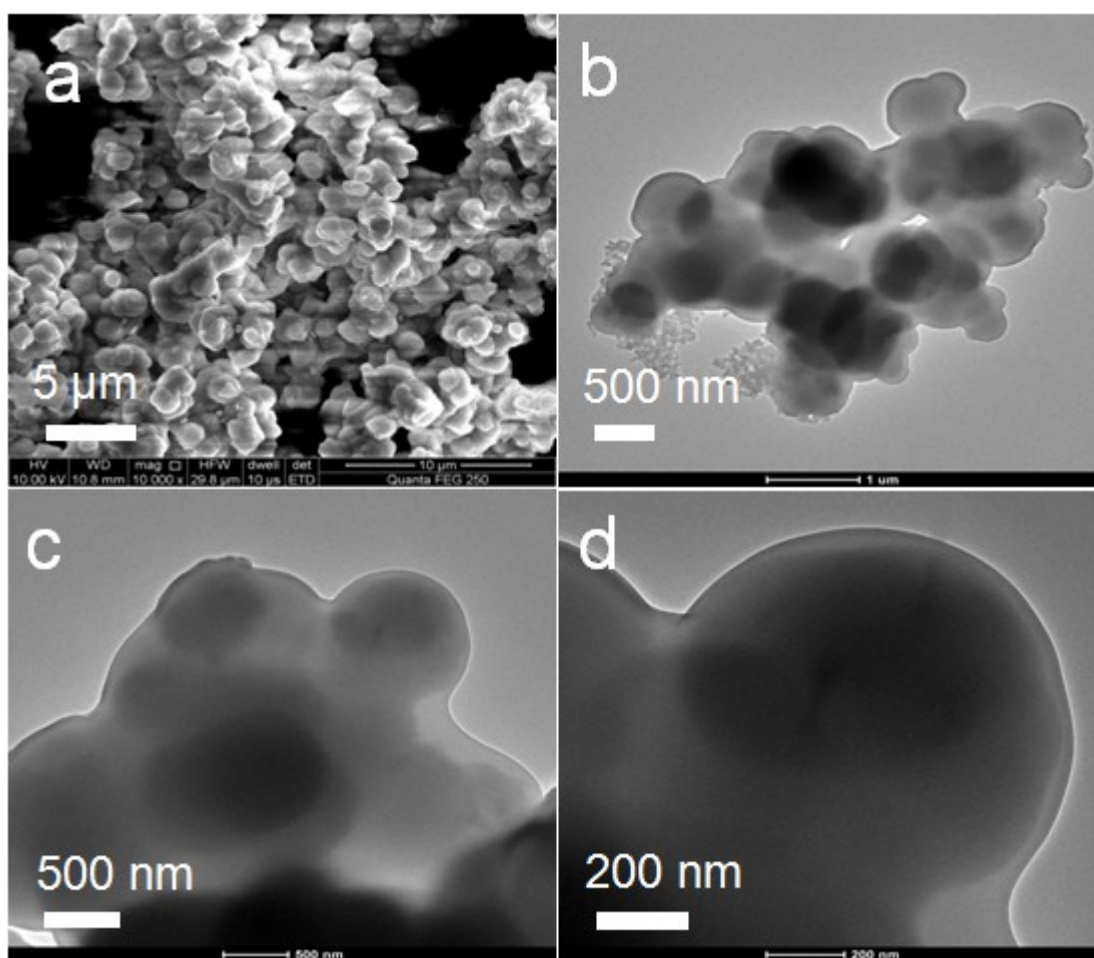


Fig. S11 SEM image of method b prepared samples before hydrothermal treated (as-obtained-b) and its corresponding TEM images.

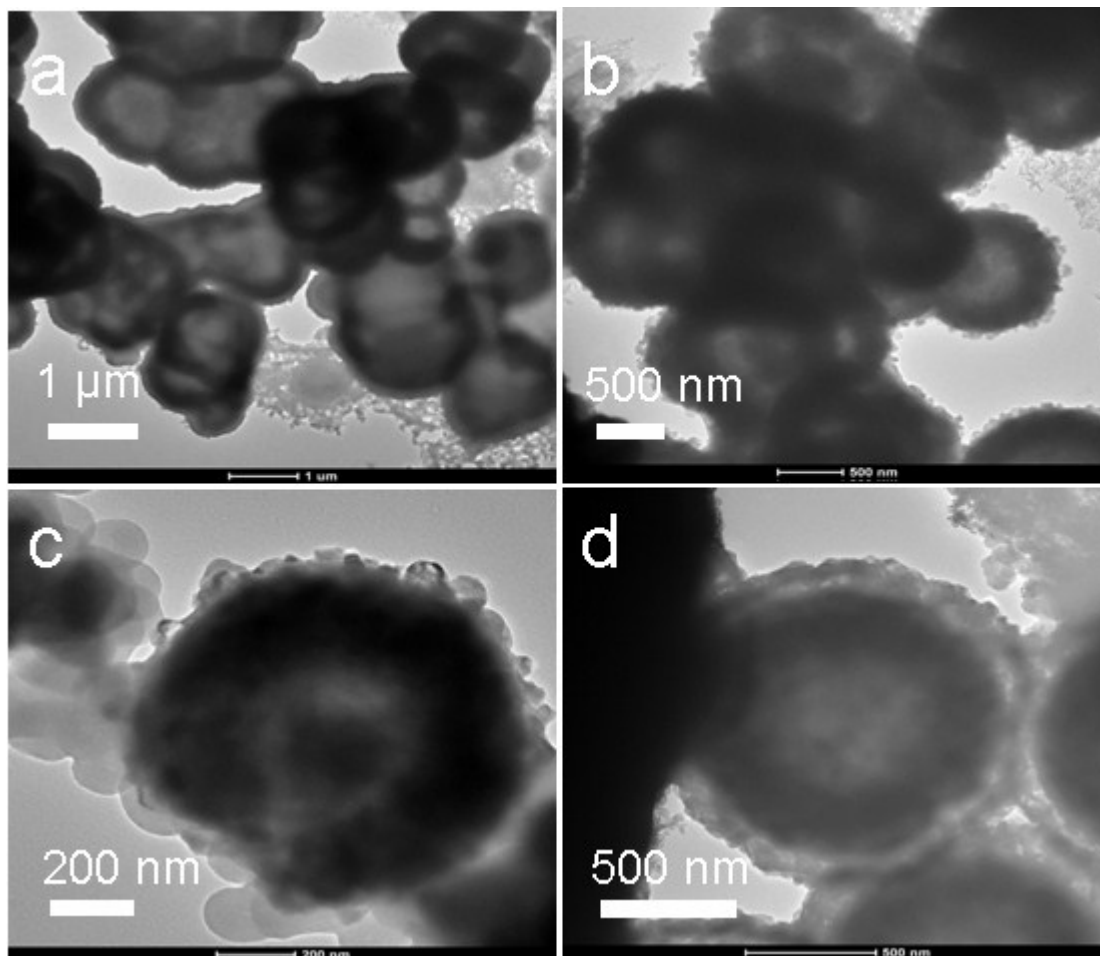


Fig. S12 TEM images of hGMP-b.

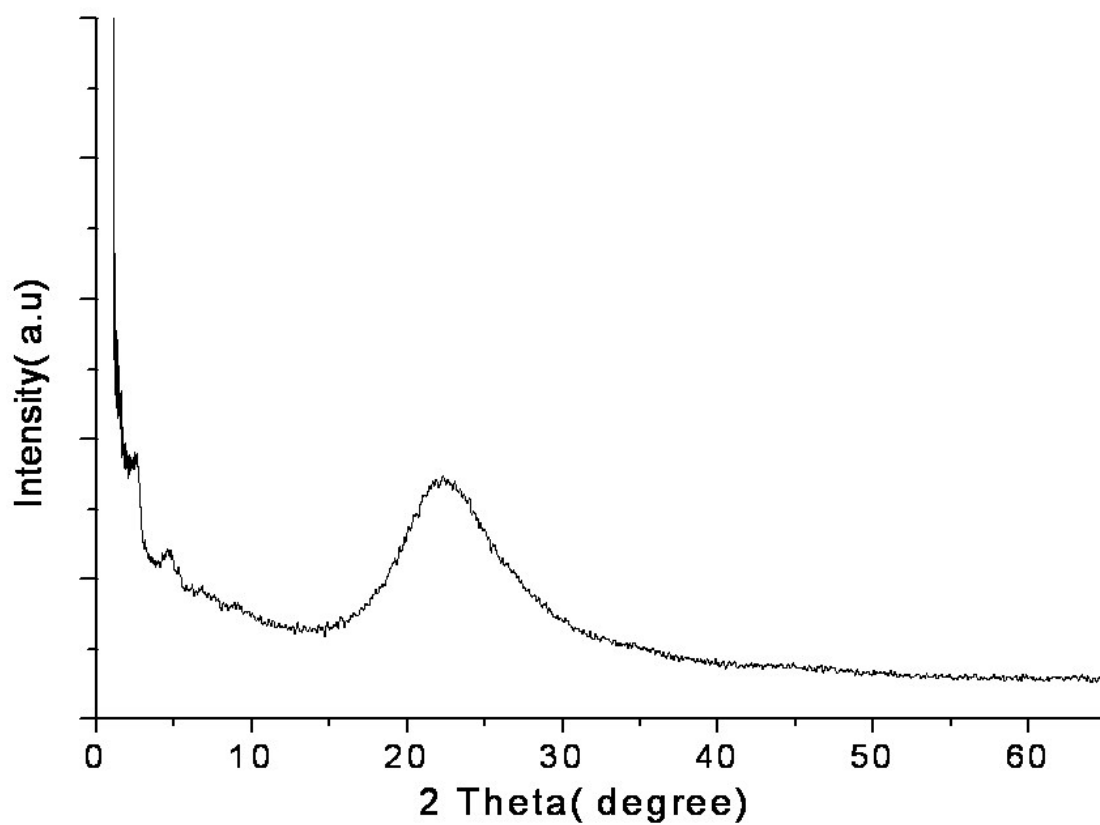


Fig. S13 XRD Pattern of cGMP-b.