

Electronic Supporting Information

Contents

Fig. S1: EDX analysis for the powdered sample of $\text{Co}_3[\text{Co}(\text{CN})_6]_2$.

Fig. S2: SEM images of the as-prepared $\text{Co}_3[\text{Co}(\text{CN})_6]_2$ sample at different magnifications.

Fig.S3: SEM photos of discontinuous $\text{Co}_3[\text{Co}(\text{CN})_6]_2$ film grown on non-woven fabrics substrate with assembly for (a) 40 (b) 80 (c) 120 (d) 160 cycles.

Fig.S4: (a) SEM photos of discontinuous $\text{Co}_3[\text{Co}(\text{CN})_6]_2$ film grown on silicon wafer substrate with assembly for 160 cycles and (b) PXRD profiles at the selected assembly circles.

Fig.S5: (a) SEM photos of compact $\text{Co}_3[\text{Co}(\text{CN})_6]_2$ film grown on porous α -alumina substrate with assembly for 40 cycles and (b) corresponding PXRD profile (the red 'X' marked diffractions arise from $\text{Co}_3[\text{Co}(\text{CN})_6]_2$ and other diffractions originates from the α -alumina).

Fig. S6: The truncated cube-shaped particles of $\text{Co}_3[\text{Co}(\text{CN})_6]_2$ on the surface of ITO glass.

Fig. S7: XPS of (a) whole spectrum (b) C 1s (c) N 1s (d) Co 2p in $\text{Co}_3[\text{Co}(\text{CN})_6]_2$.

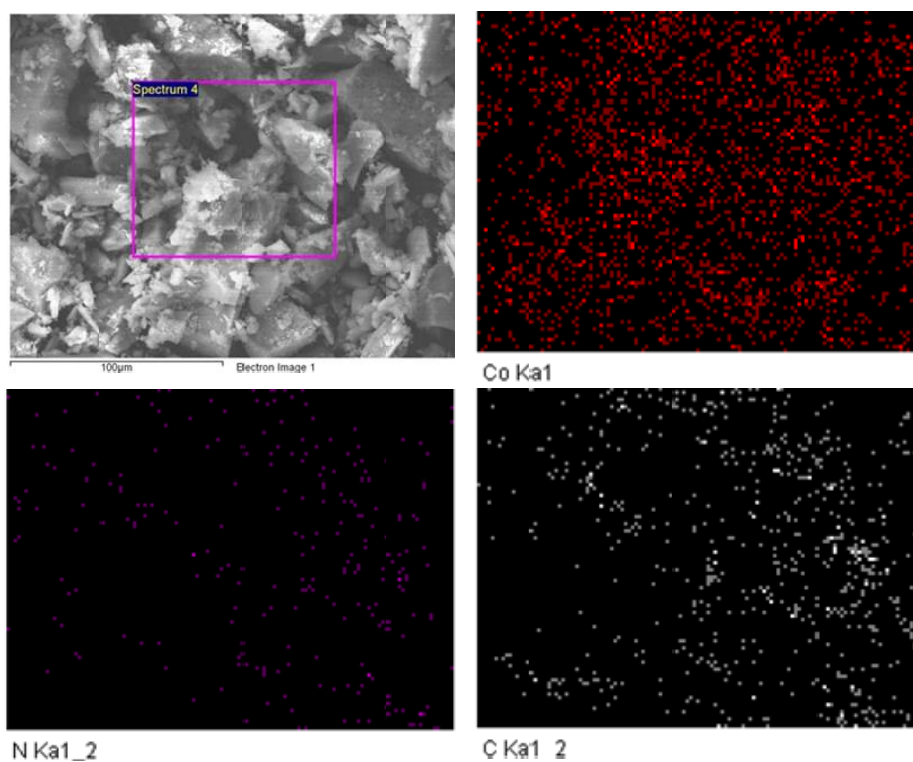
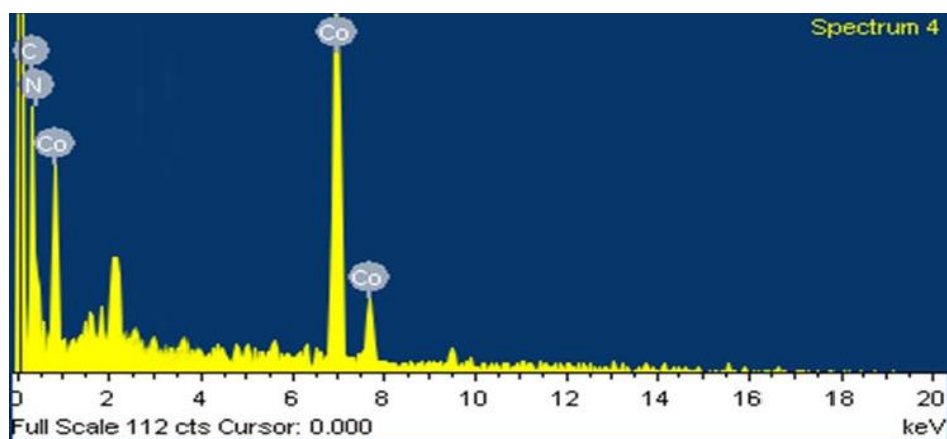


Fig. S1: EDX analysis for the powdered sample of $\text{Co}_3[\text{Co}(\text{CN})_6]_2$.

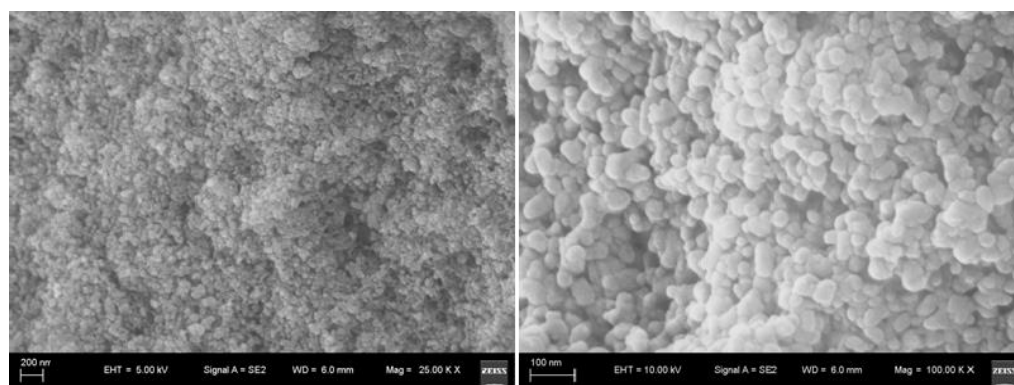


Fig. S2: SEM images of the as-prepared $\text{Co}_3[\text{Co}(\text{CN})_6]_2$ sample at different magnifications.

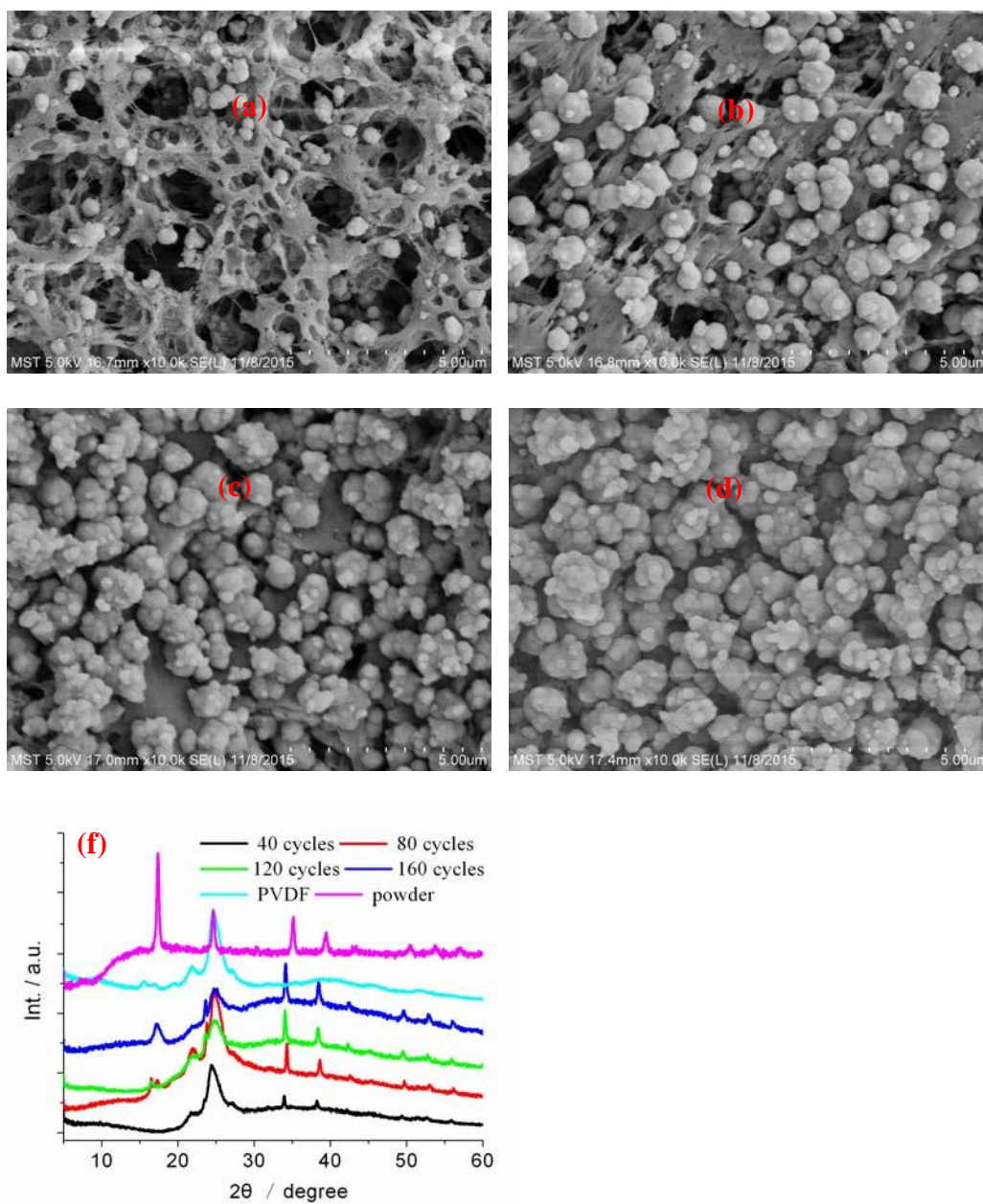


Fig.S3: SEM photos of discontinuous $\text{Co}_3[\text{Co}(\text{CN})_6]_2$ film grown on non-woven fabrics substrate with assembly for (a) 40 (b) 80 (c) 120 (d) 160 cycles (e) PXRD profiles.

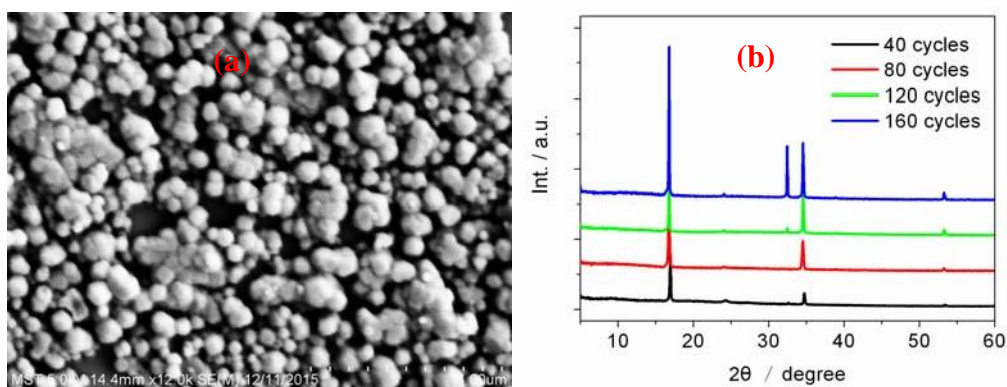


Fig.S4: (a) SEM photos of discontinuous $\text{Co}_3[\text{Co}(\text{CN})_6]_2$ film grown on silicon wafer substrate with assembly for 160 cycles and (b) PXRD profiles at the selected assembly circles.

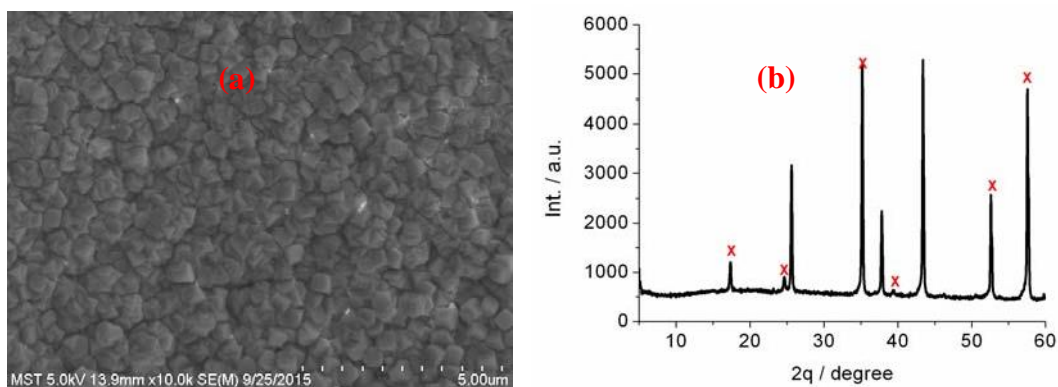


Fig.S5: (a) SEM photos of compact $\text{Co}_3[\text{Co}(\text{CN})_6]_2$ film grown on porous α -alumina substrate with assembly for 40 cycles and (b) corresponding PXRD profile (the red 'X' marked diffractions arise from $\text{Co}_3[\text{Co}(\text{CN})_6]_2$ and other diffractions originates from the α -alumina).

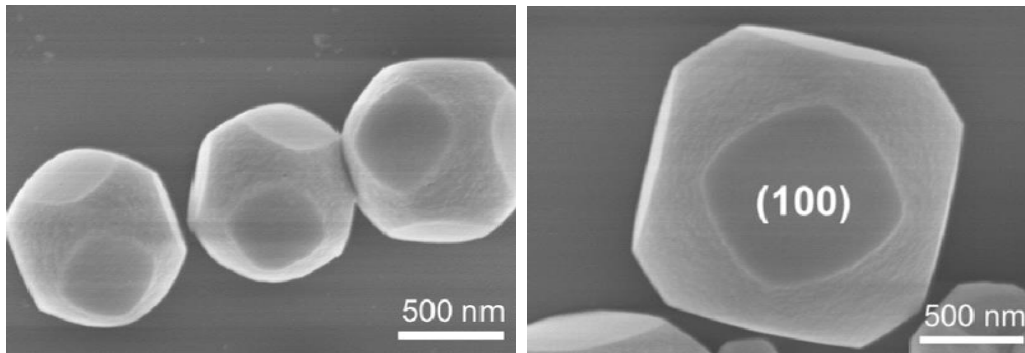


Fig. S6: The truncated cube-shaped particles of $\text{Co}_3[\text{Co}(\text{CN})_6]_2$ on the surface of ITO glass.

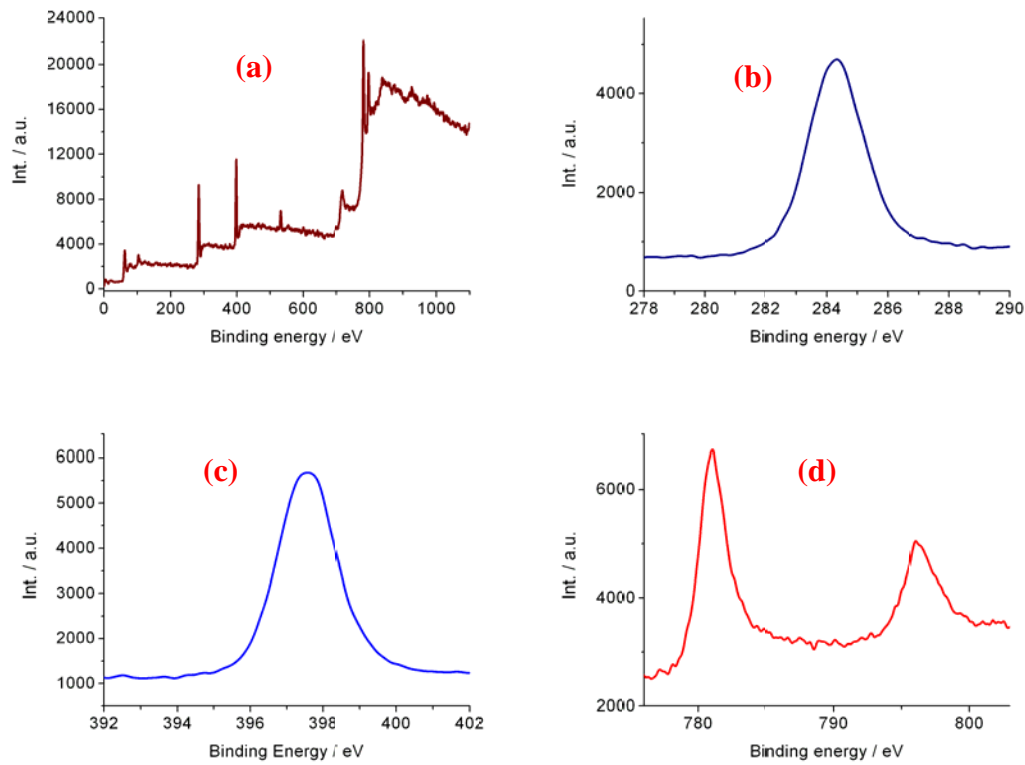


Fig. S7: XPS of (a) whole spectrum (b) C 1s (c) N 1s (d) Co 2p in $\text{Co}_3[\text{Co}(\text{CN})_6]_2$.