

# Supporting Information

## Tubular inversed opal scaffolds for biomimetic vessels

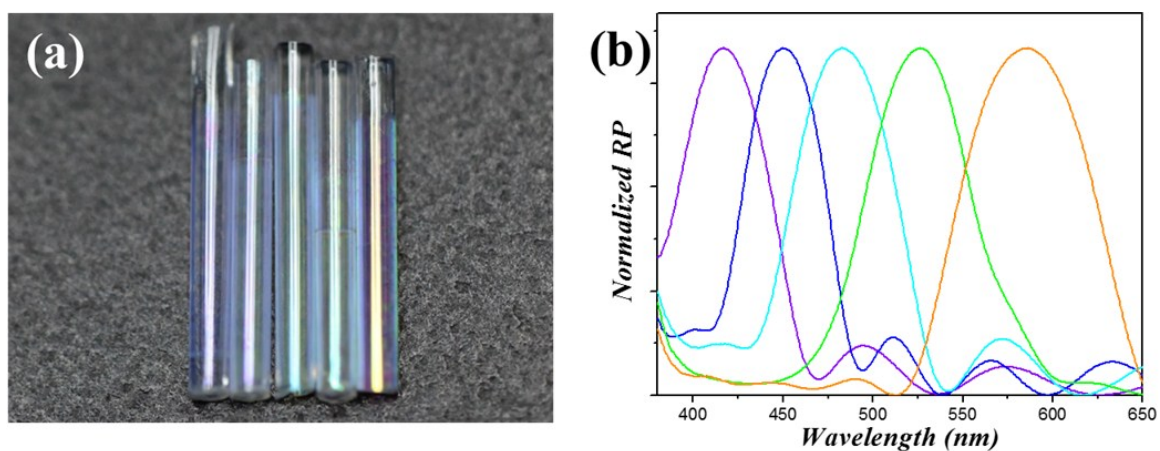
Ze Zhao,<sup>a</sup> Jie Wang,<sup>a</sup> Jie Lu,<sup>a</sup> Yunru Yu,<sup>a</sup> Fanfan Fu,<sup>a</sup> Huan Wang,<sup>a</sup> Yuxiao Liu,<sup>a</sup> Yuanjin Zhao,<sup>\*ab</sup>  
Zhongze Gu<sup>\*ab</sup>

<sup>a</sup> State Key Laboratory of Bioelectronics, School of Biological Science and Medical Engineering, Southeast University, Nanjing 210096, China.

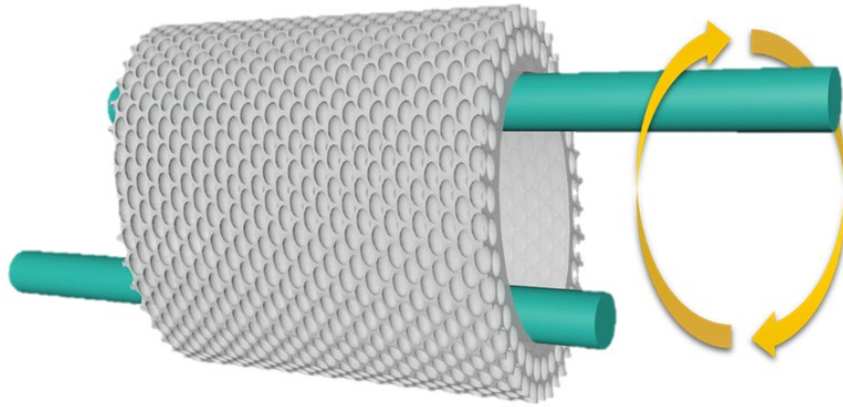
E-mail: yjzhao@seu.edu.cn; gu@seu.edu.cn.

<sup>b</sup> Suzhou Key Laboratory of Environment and Biosafety, Research Institute of Southeast University in Suzhou, Suzhou 215123, China.

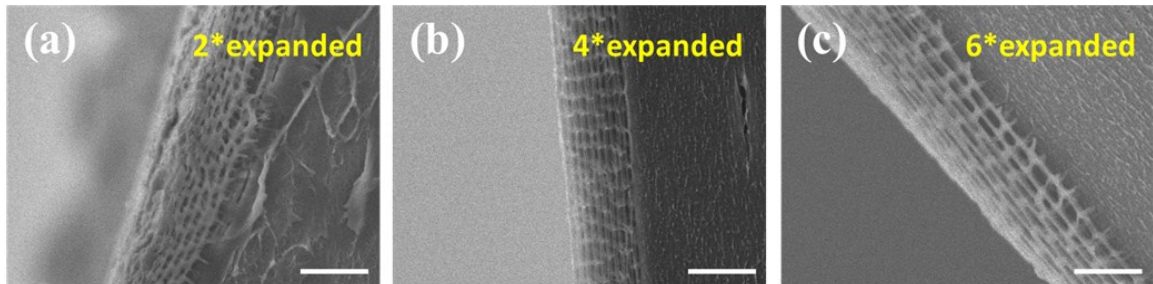
### Supporting Figures:



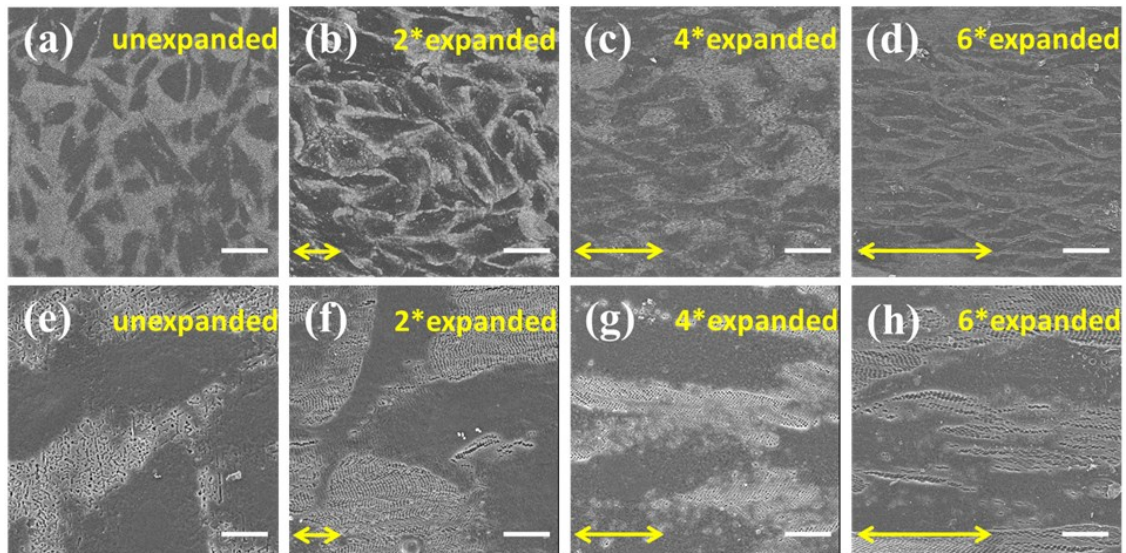
**Figure S1.** (a) Photo image and (b) characteristic reflection peaks of the five kinds of tubular polystyrene inverse opals.



**Figure S2.** Schematic of the rotating expansion. two steel bars were inserted into the tubular polystyrene inverse opal to slowly and evenly enlarge the diameter with rotation. The arrows indicate the direction of rotation.



**Figure S3.** SEM images of cross-section of different expanded tubular scaffolds: (a) 2 times expansion; (b) 4 times expansion; (c) 6 times expansion. Scale bars are 1  $\mu\text{m}$ .



**Figure S4.** SEM images of A7r5 cells cultured on outer surface of different expanded tubular inverse opals: (a) unexpanded; (b) 2 times expansion; (c) 4 times expansion, and (d) 6 times expansion. (e, f, g, h) Magnification images of the cells in a, b, c, and d, respectively. Scale bars for a-d and e-h are 100  $\mu\text{m}$  and 25  $\mu\text{m}$  respectively. Double sided arrows indicate the circumferential direction.