

Electronic Supplementary Information (ESI) for

Regioselective Double Stille Coupling Reaction of Bicyclic Stannolanes

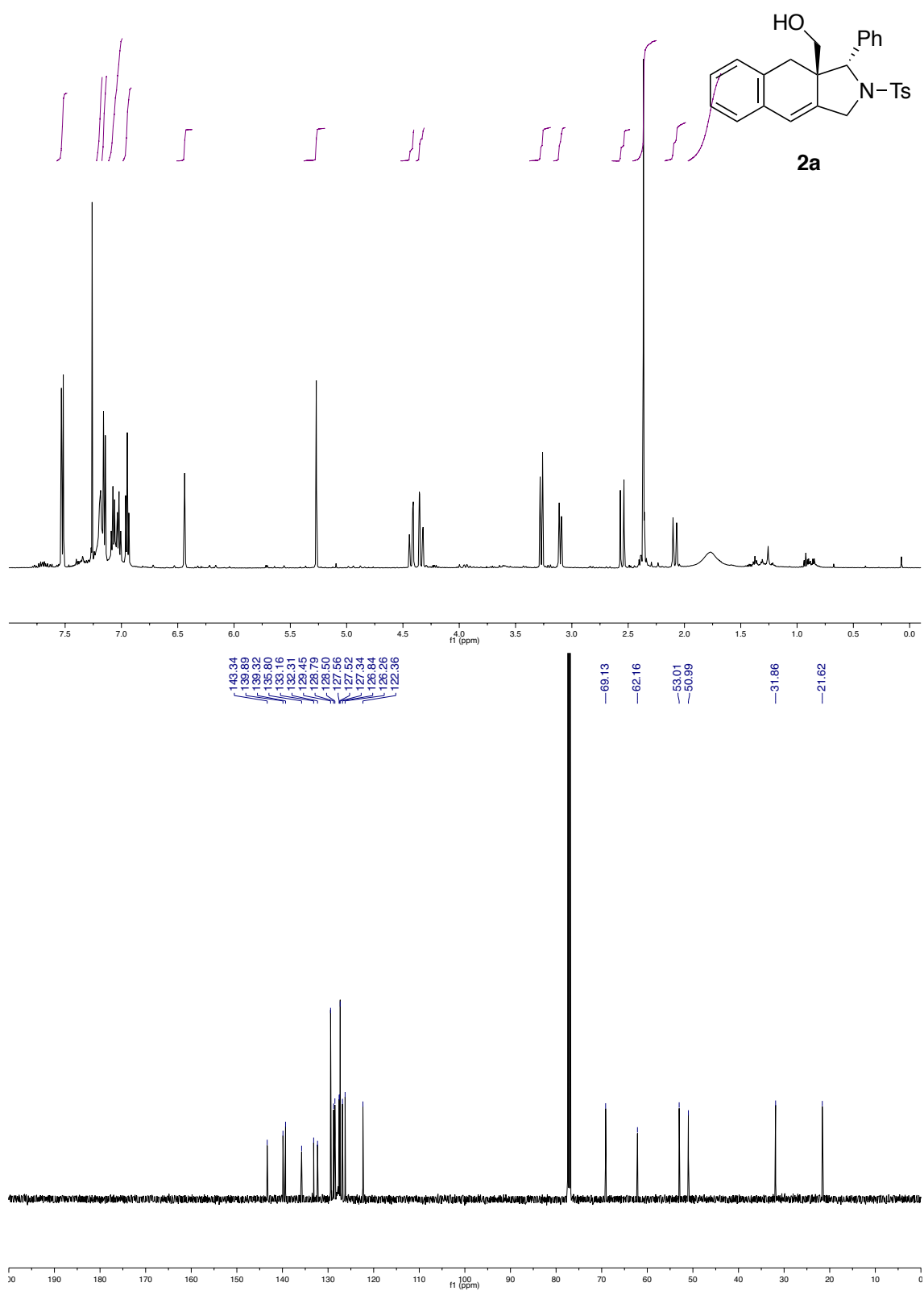
Akio Kamimura,* Toshiyuki Tanaka, Masahiro So, Tomoyuki Itaya, Kantaro Matsuda
and Takuji Kawamoto

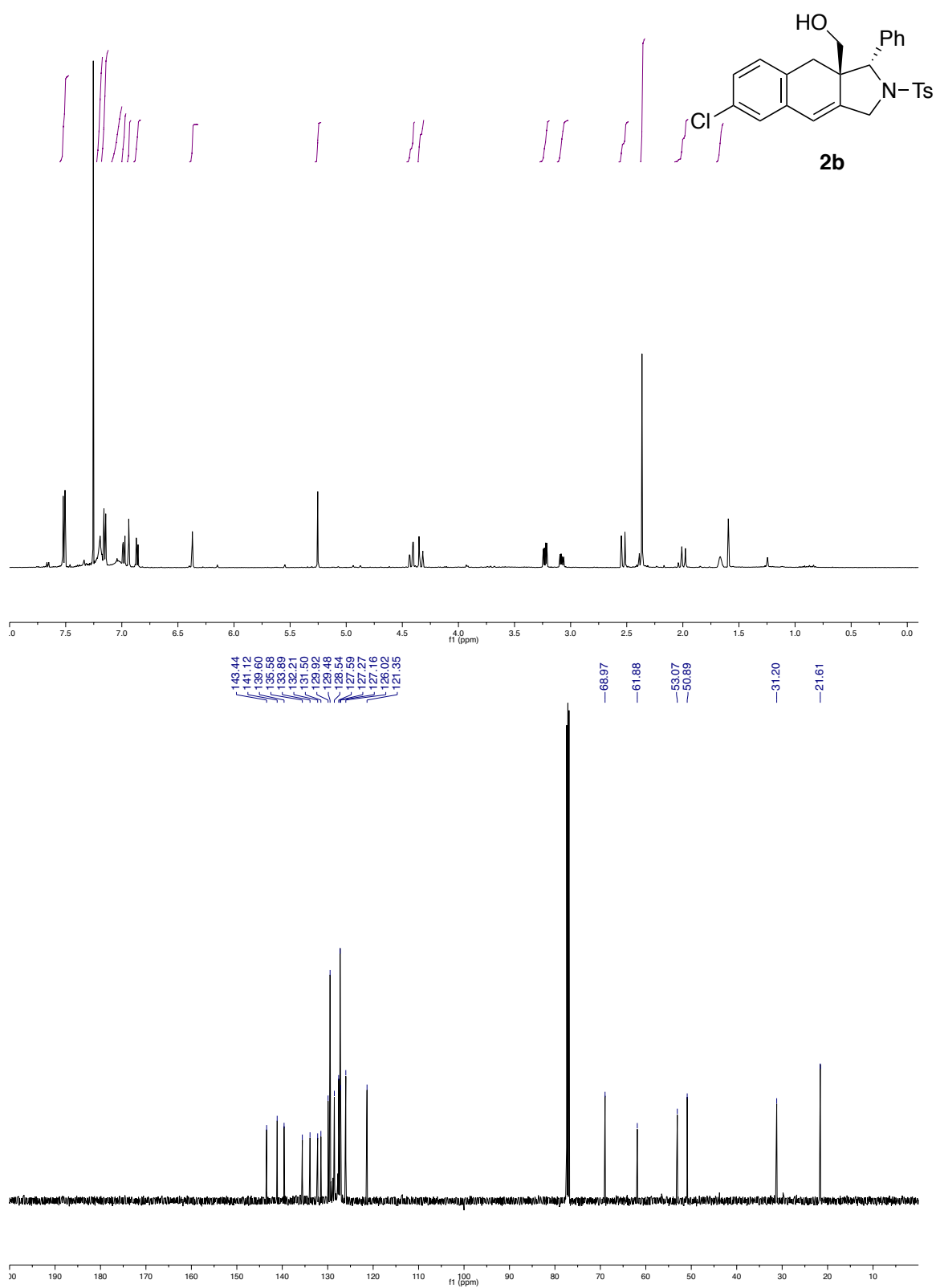
*Department of Applied Molecular Bioscience, Graduate School of Medicine,
Yamaguchi University, Ube 755-8611 Japan*

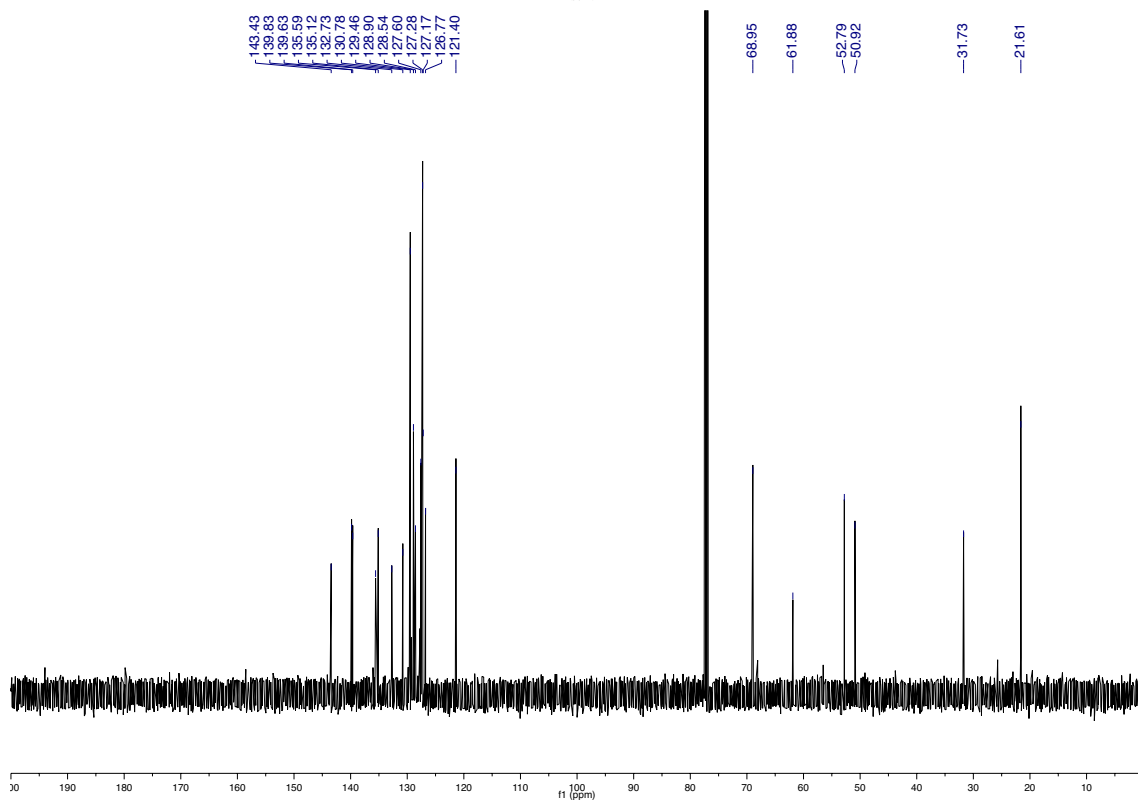
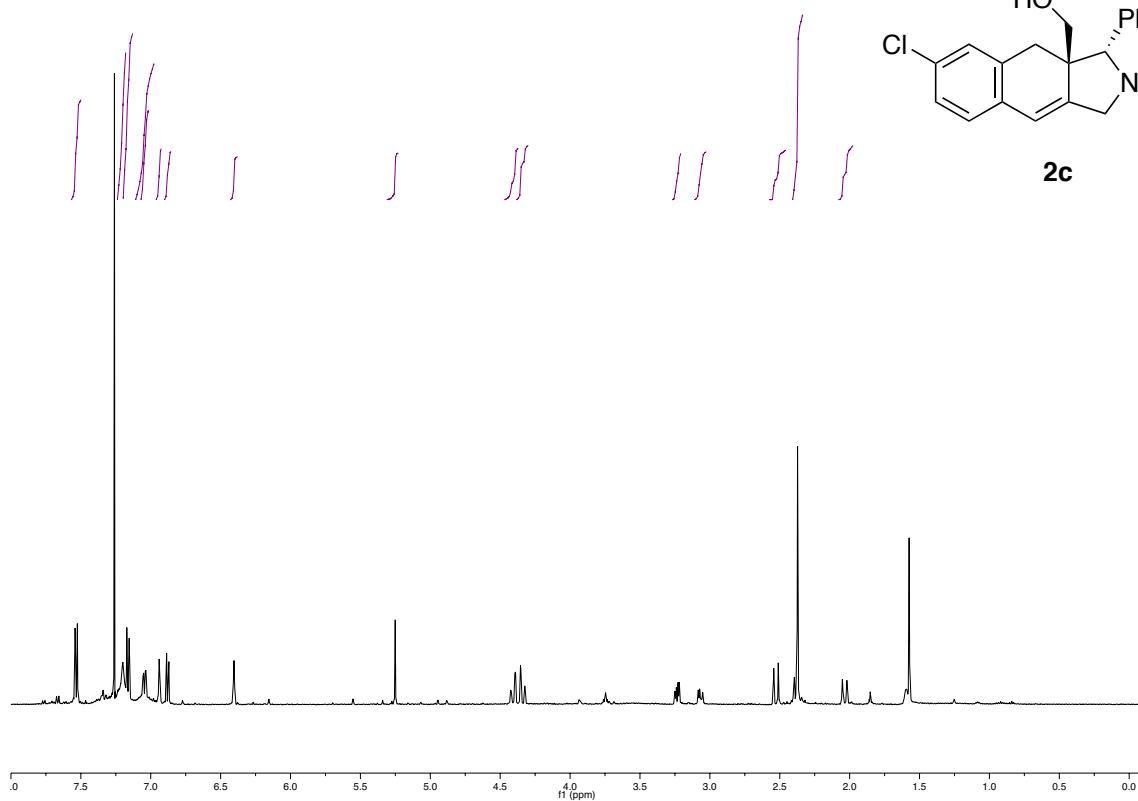
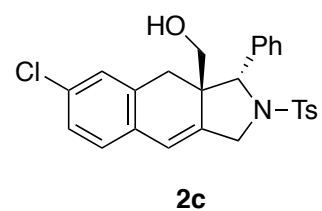
e-mail: ak10@yamaguchi-u.ac.jp

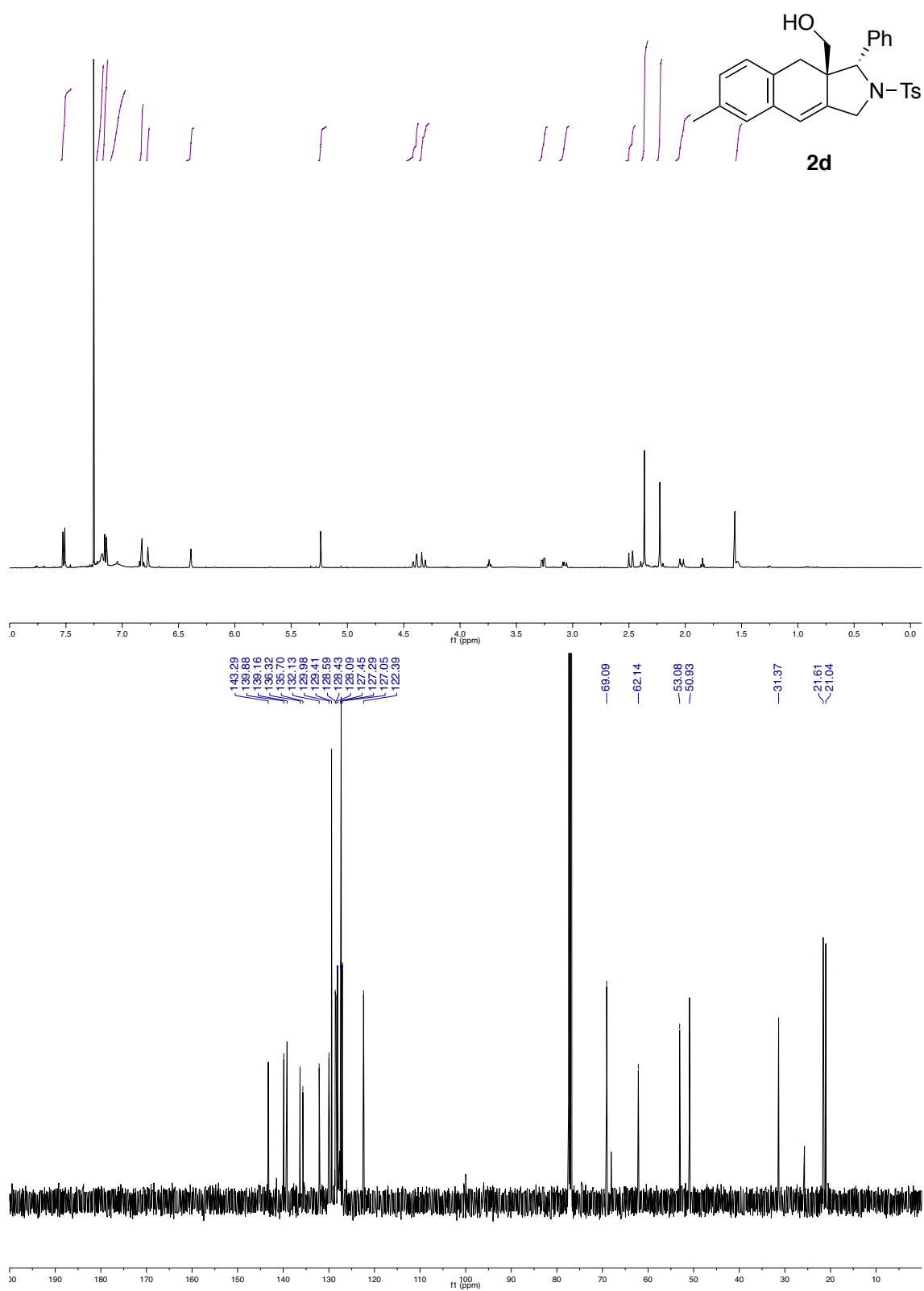
Contents

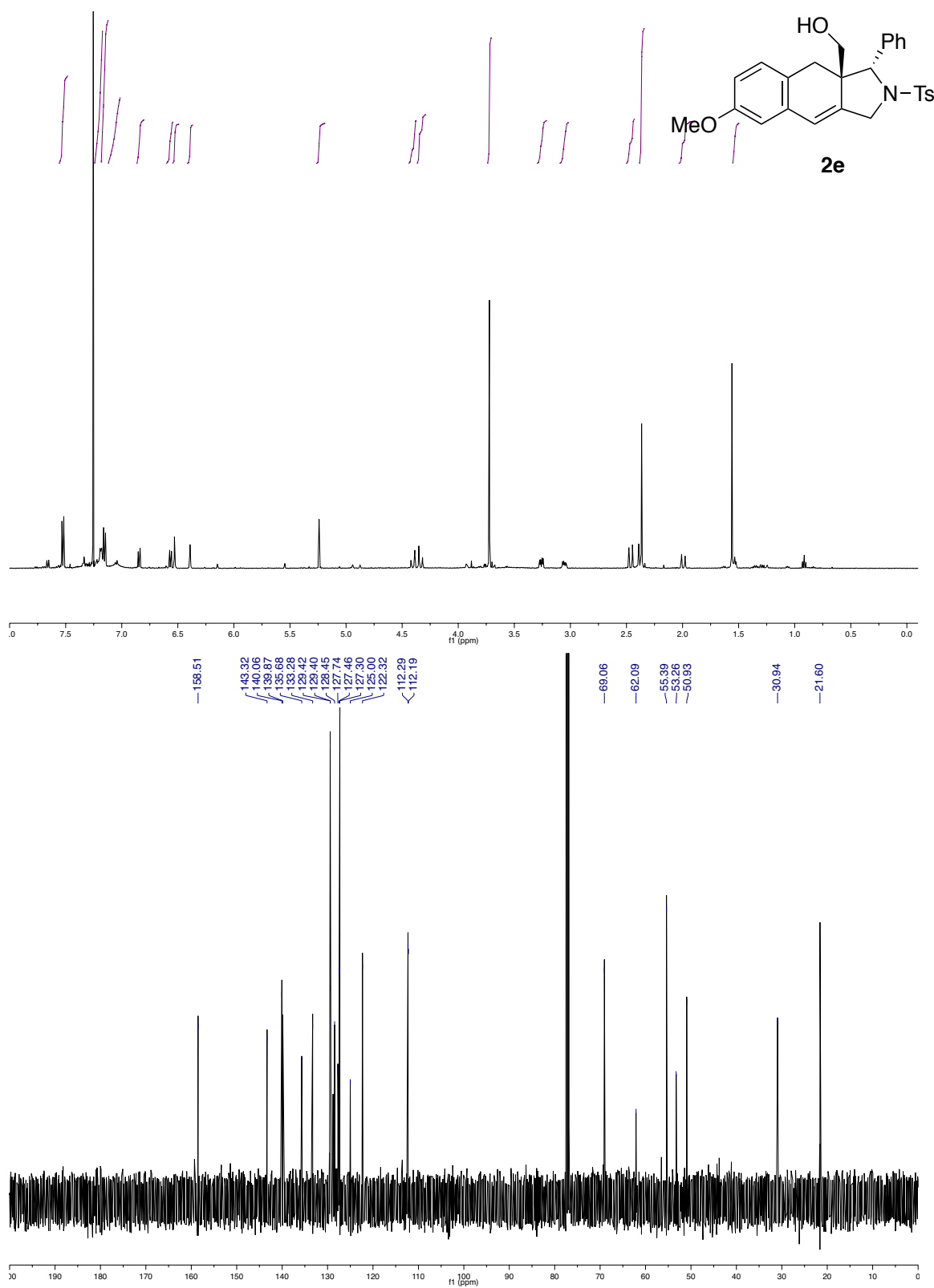
| | |
|--|-----|
| ¹ H and ¹³ C NMR charts for compounds 2 , 4 , 5 , 6 , and 7 | S2 |
| ORTEP chart for compound 6e | S36 |

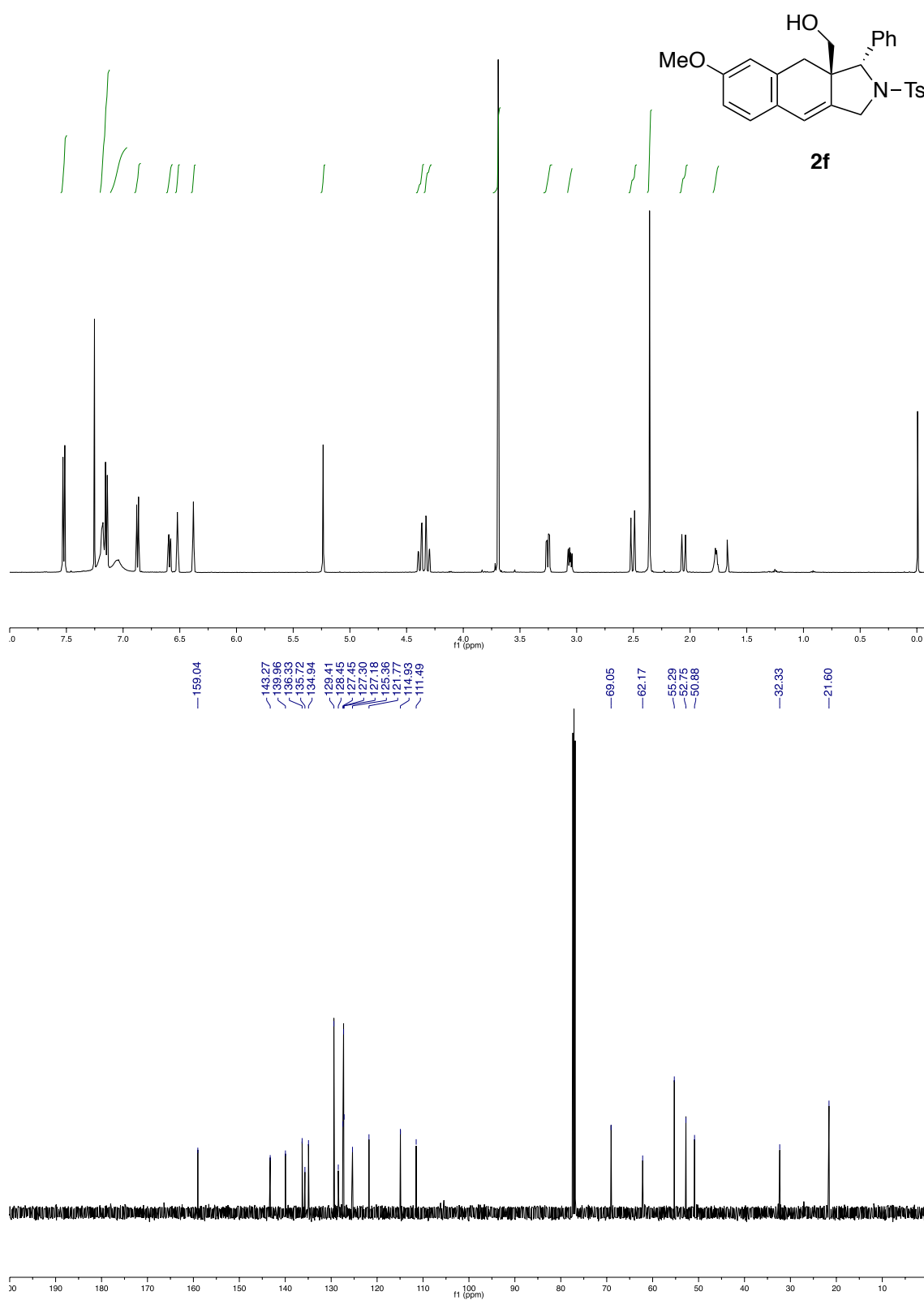


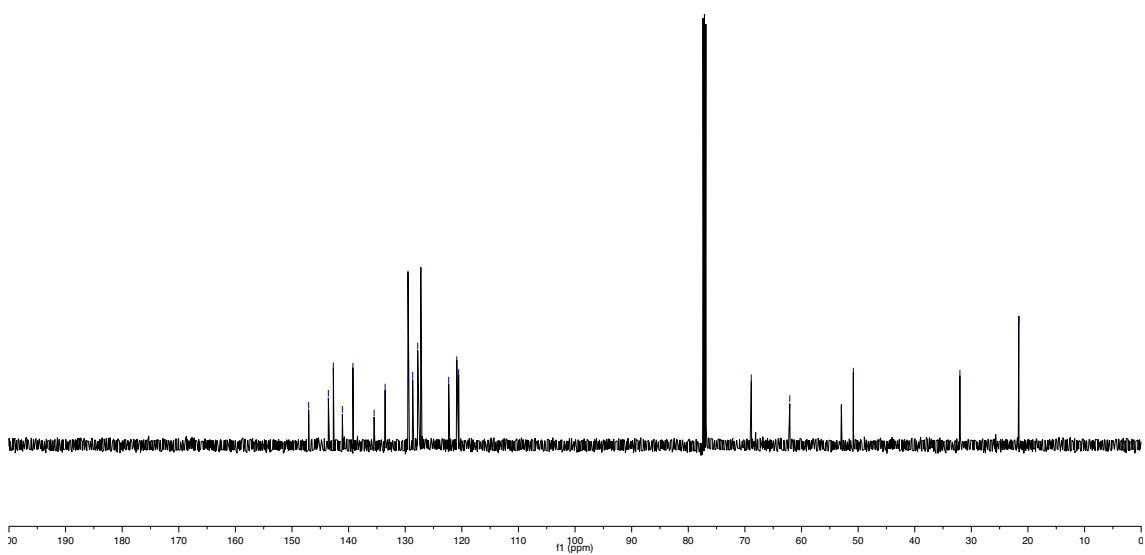
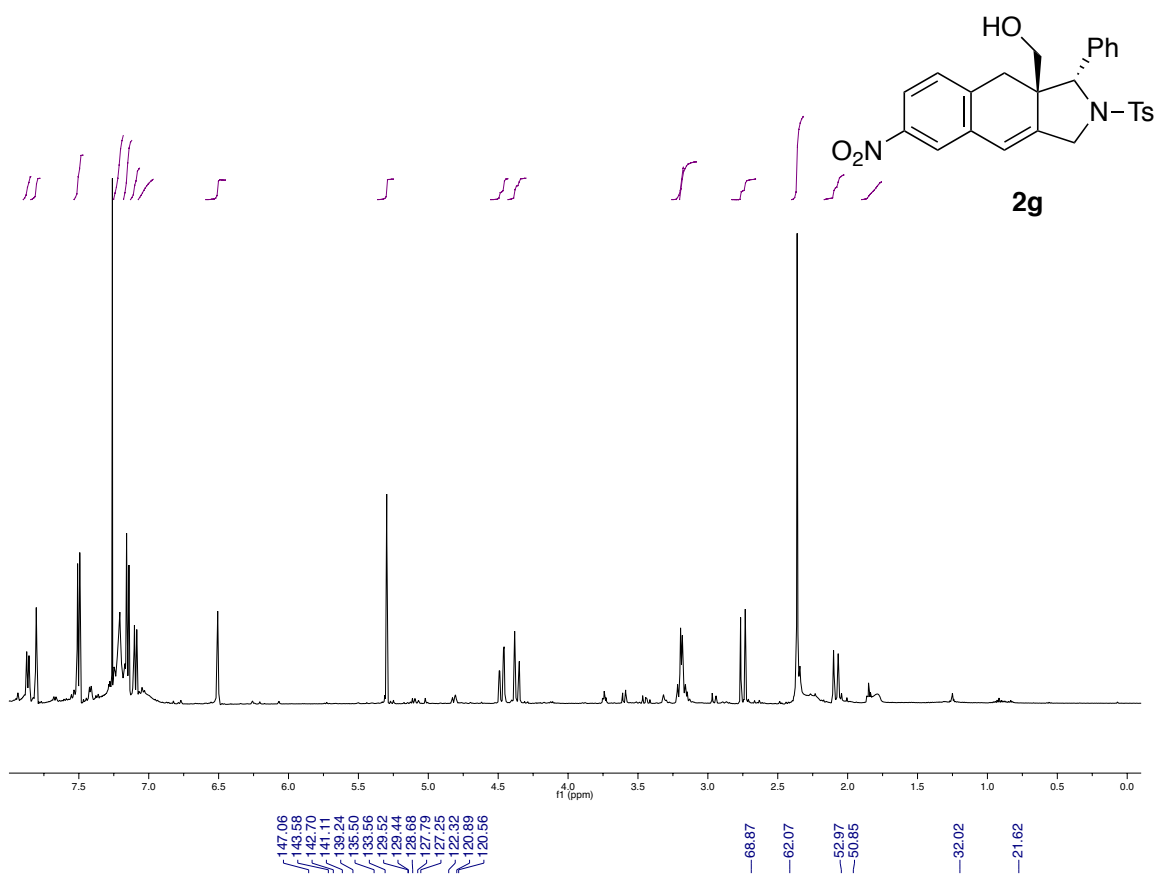


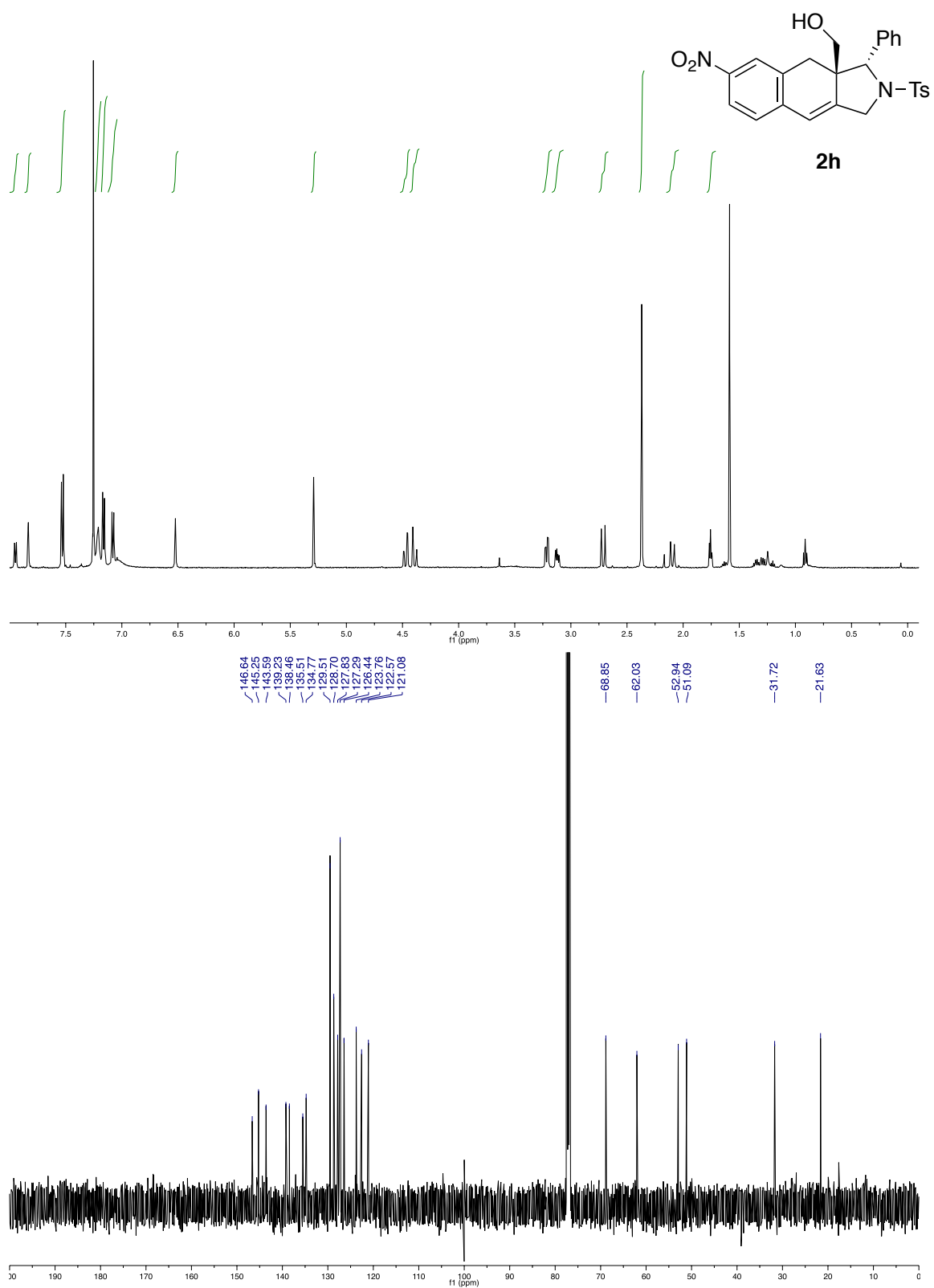


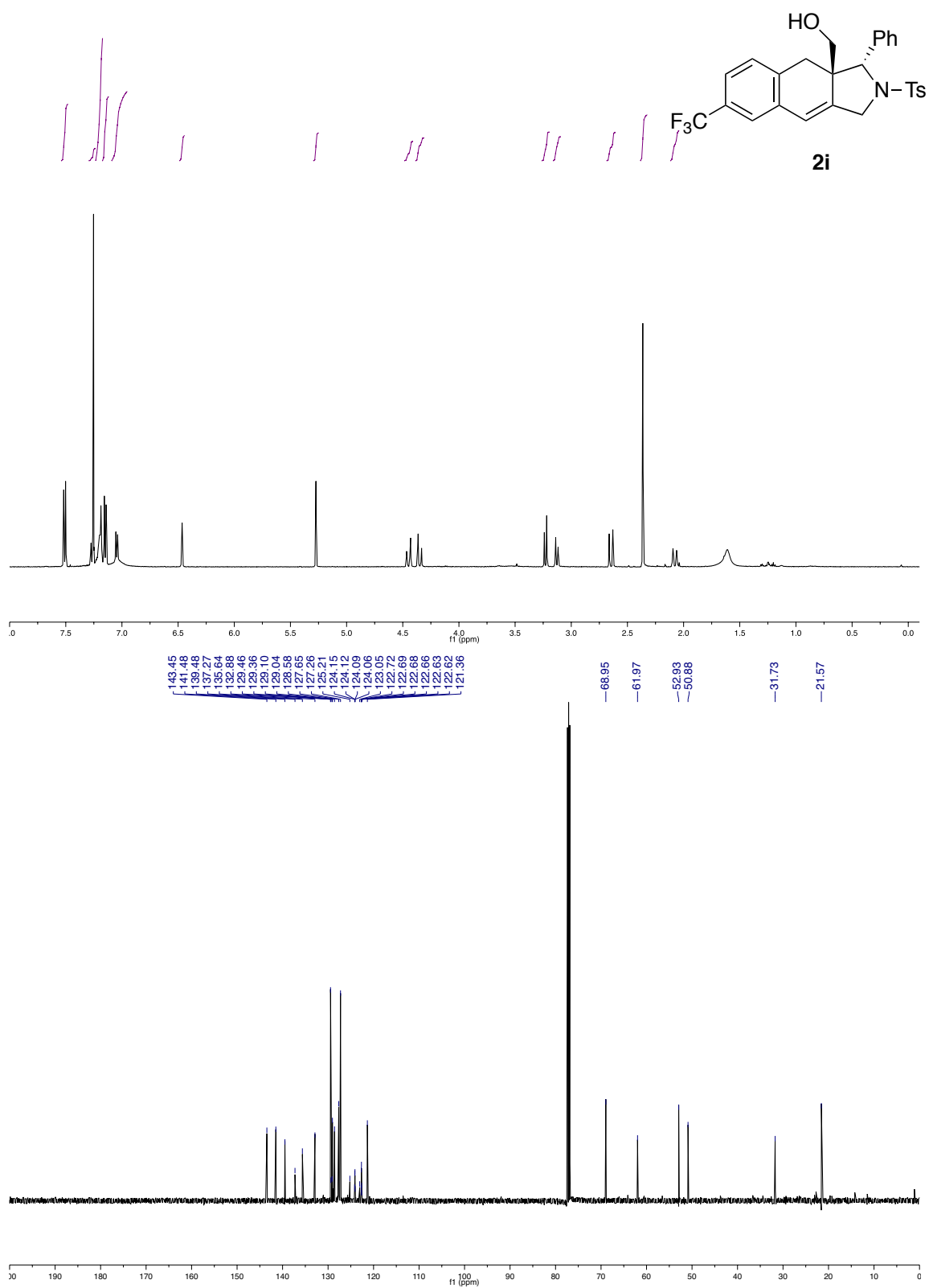


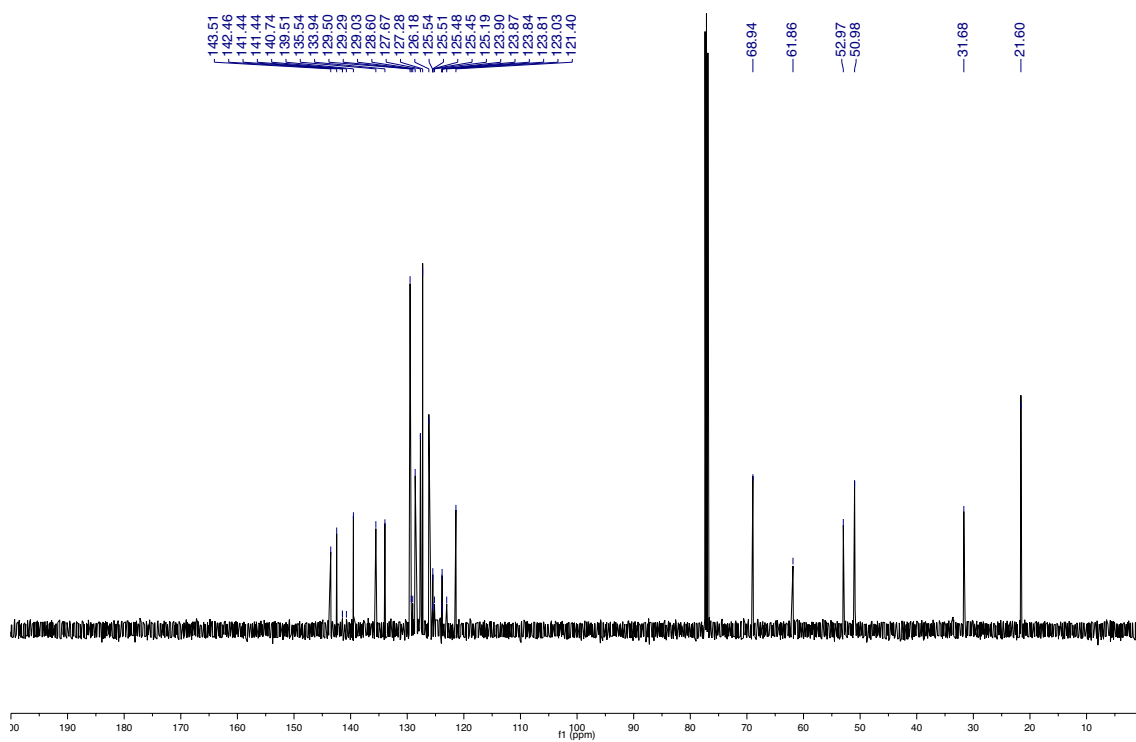


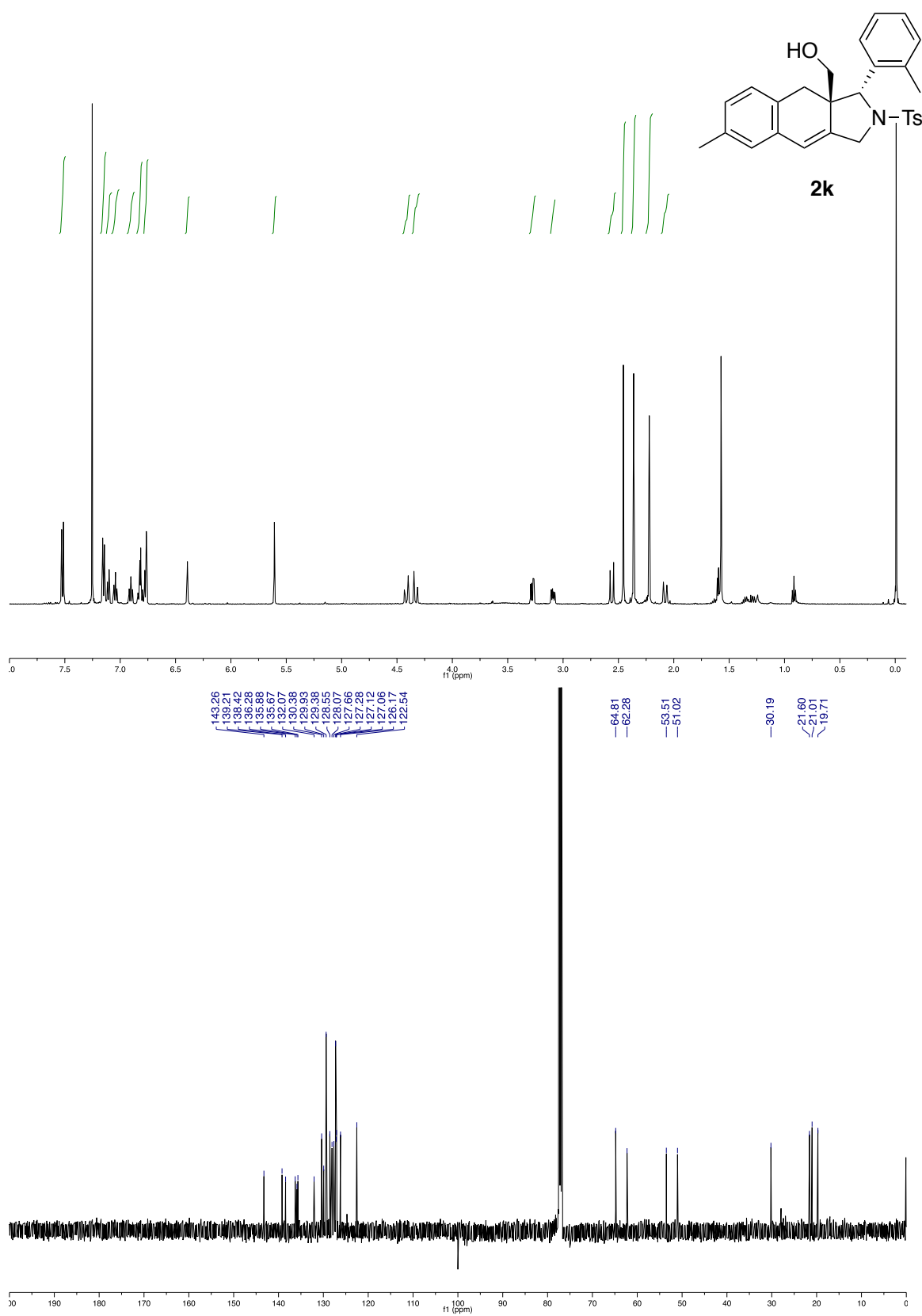


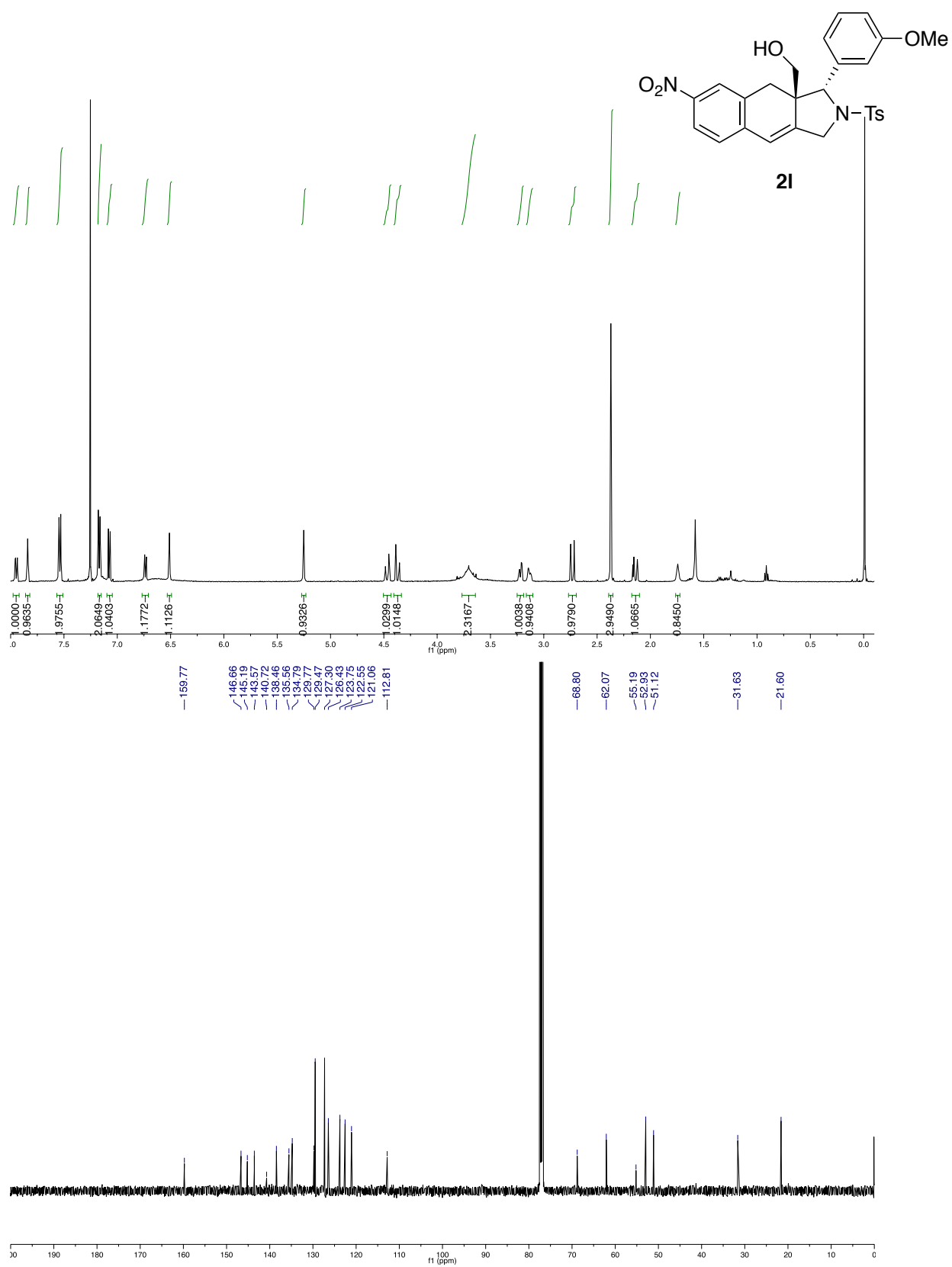


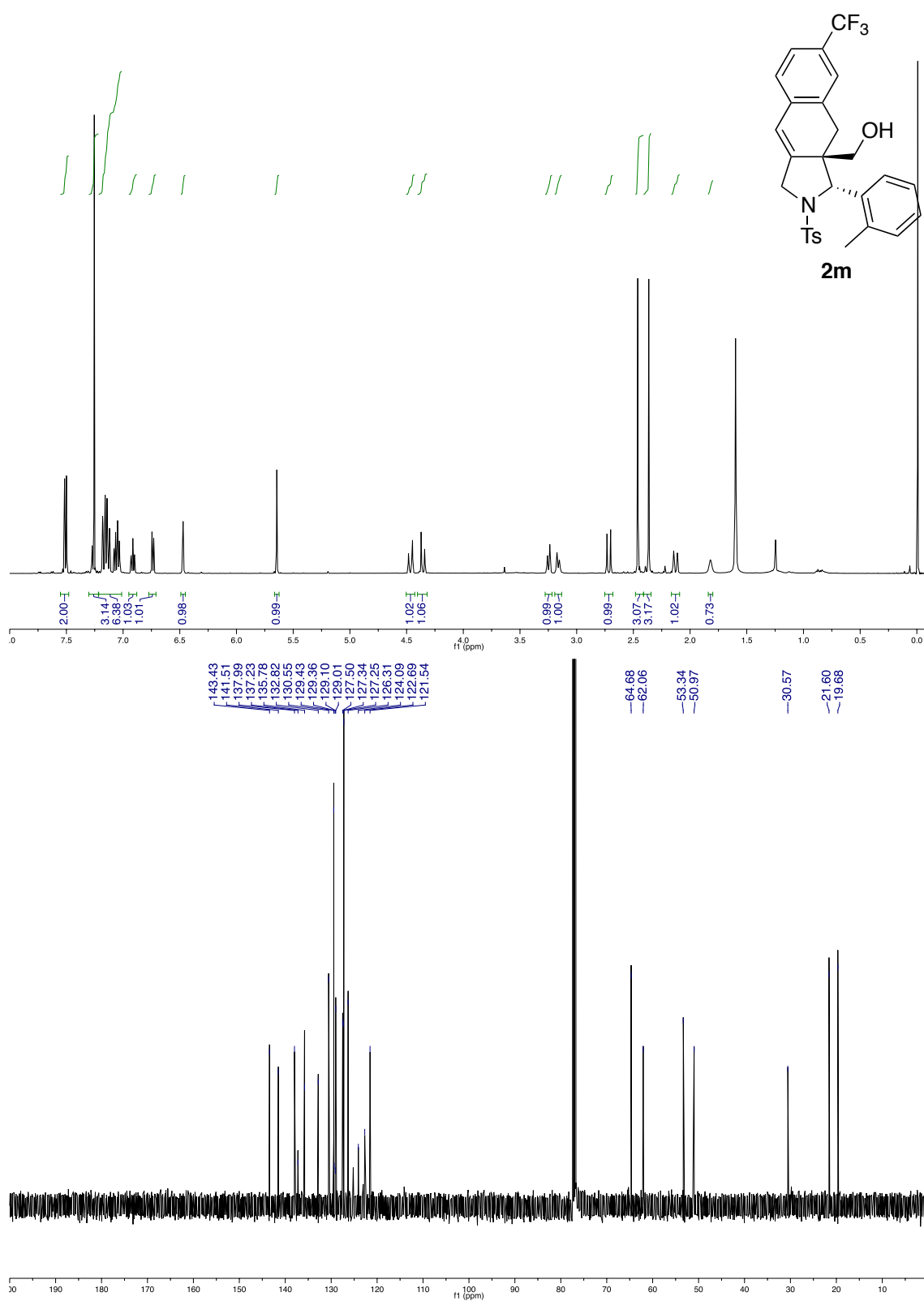


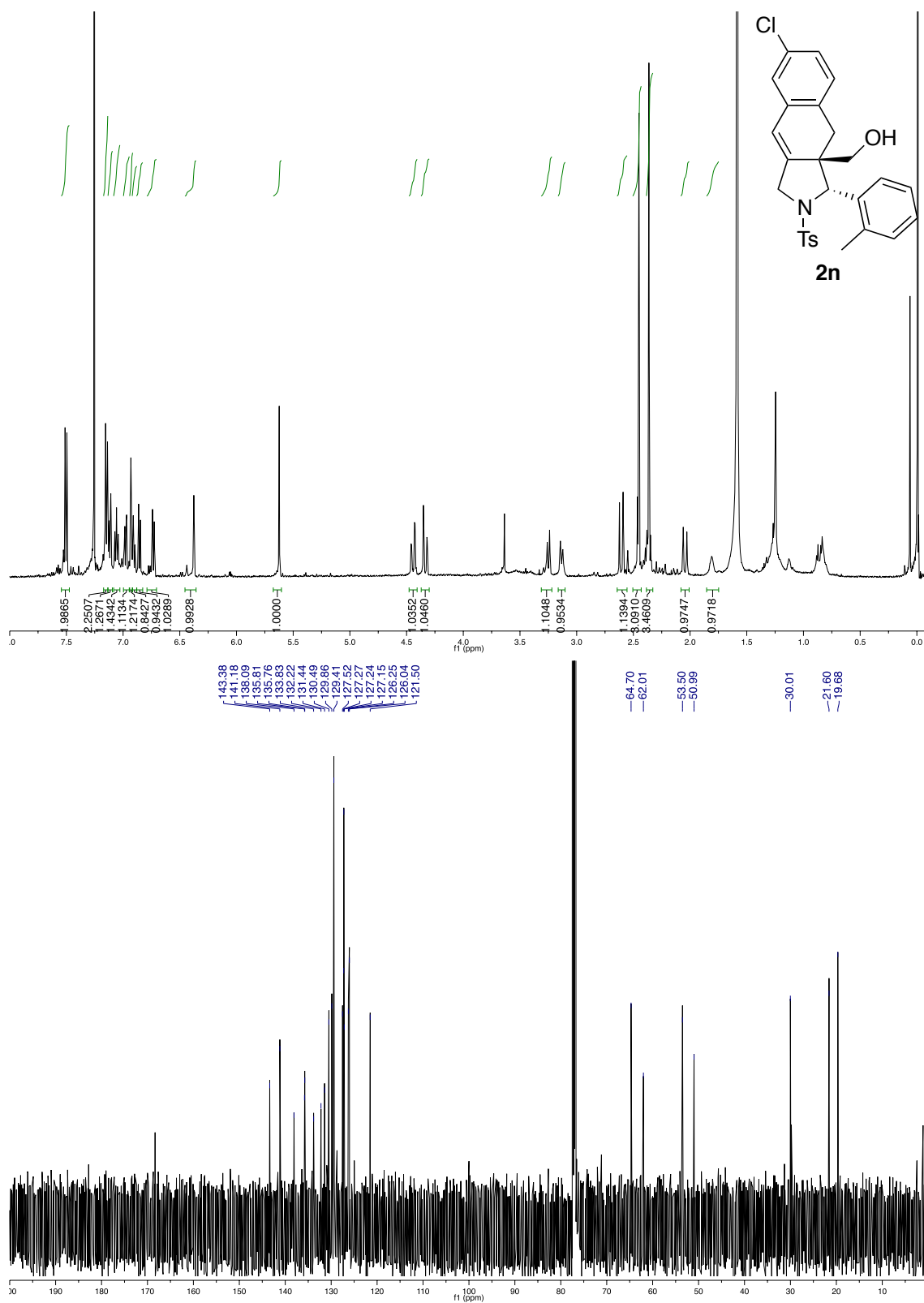


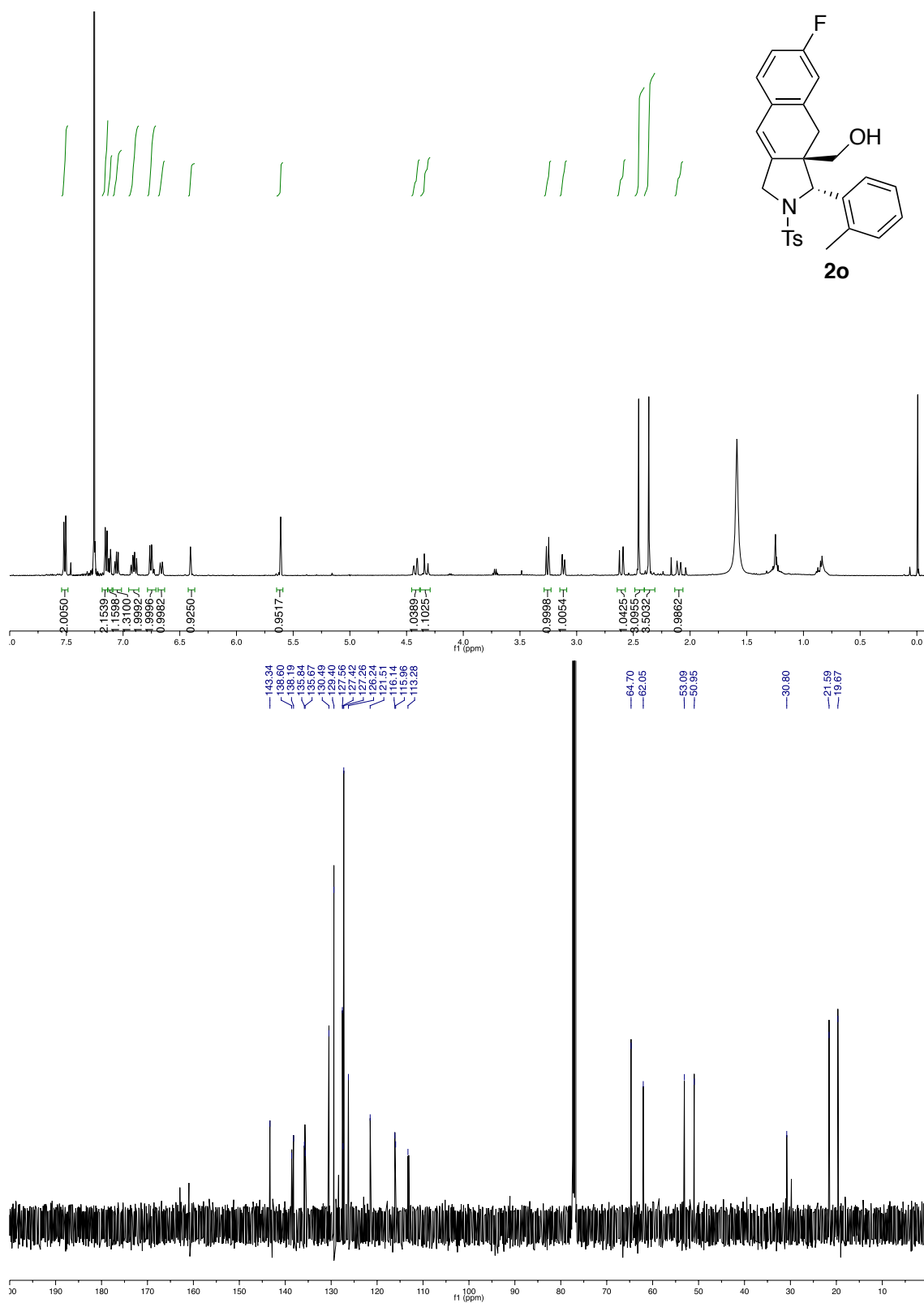


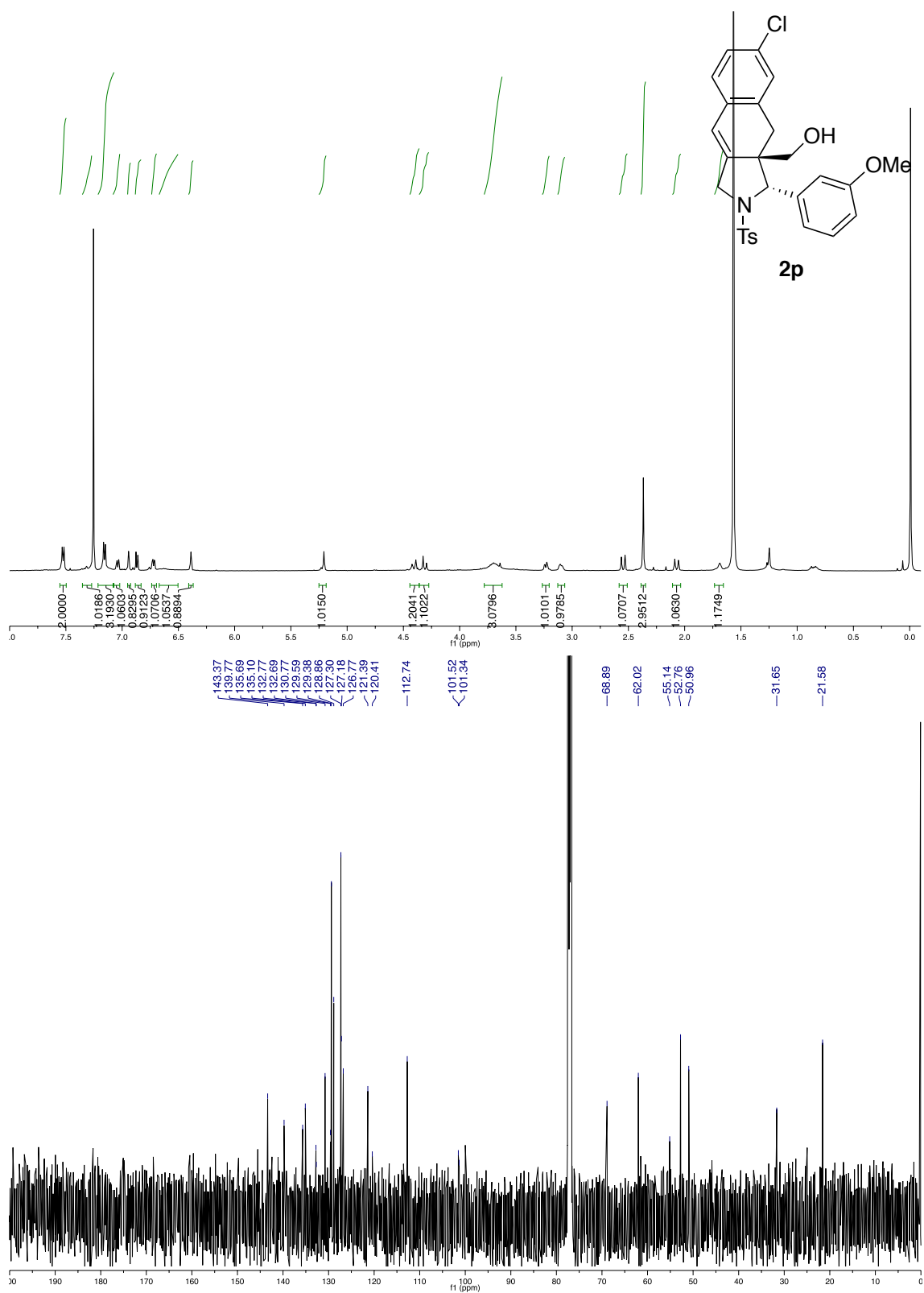


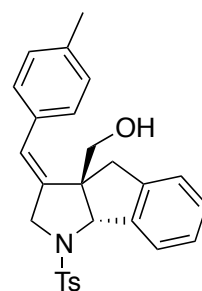
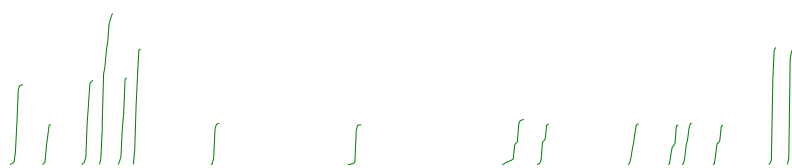




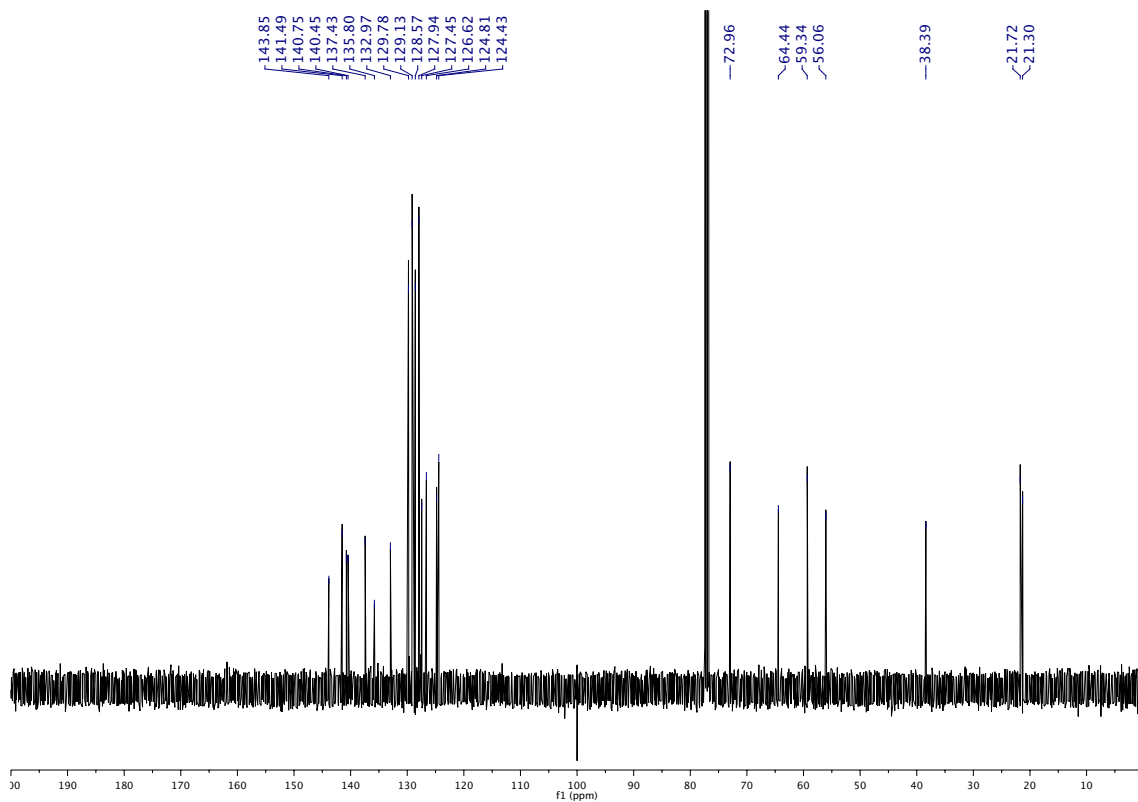
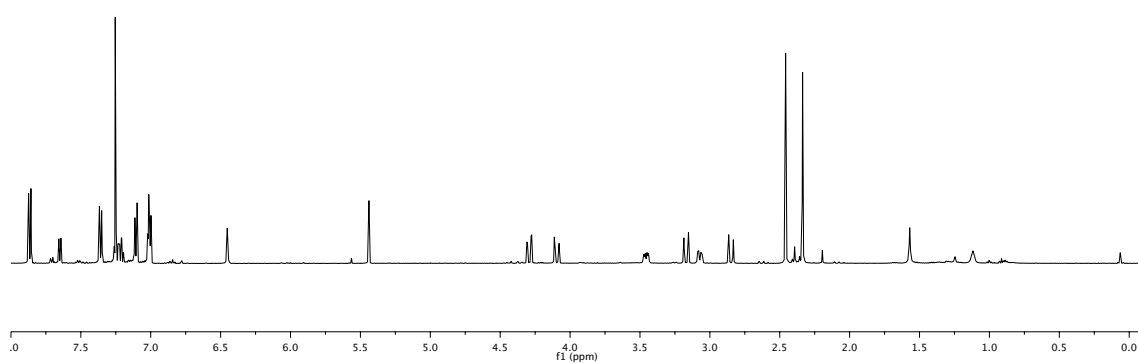


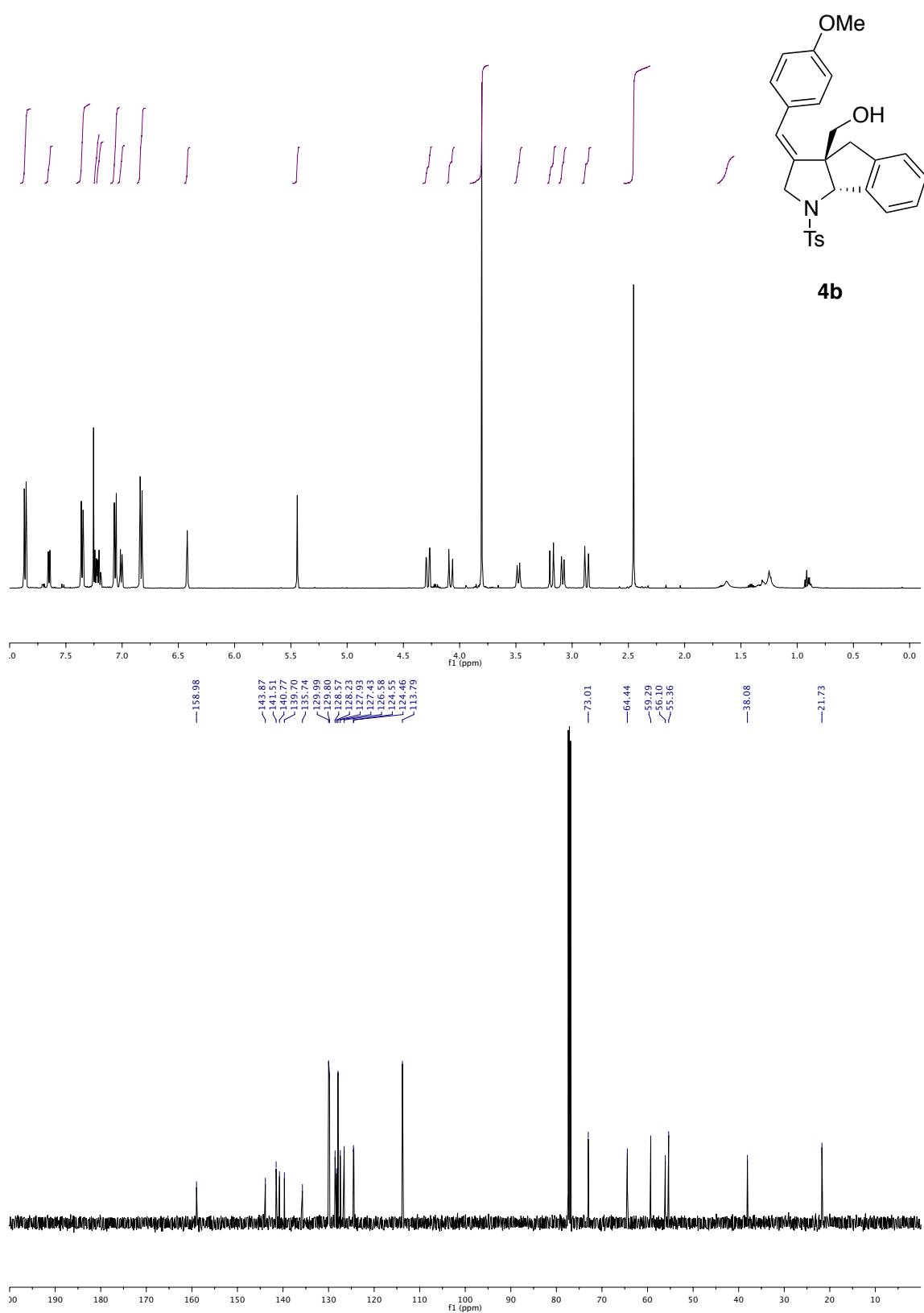


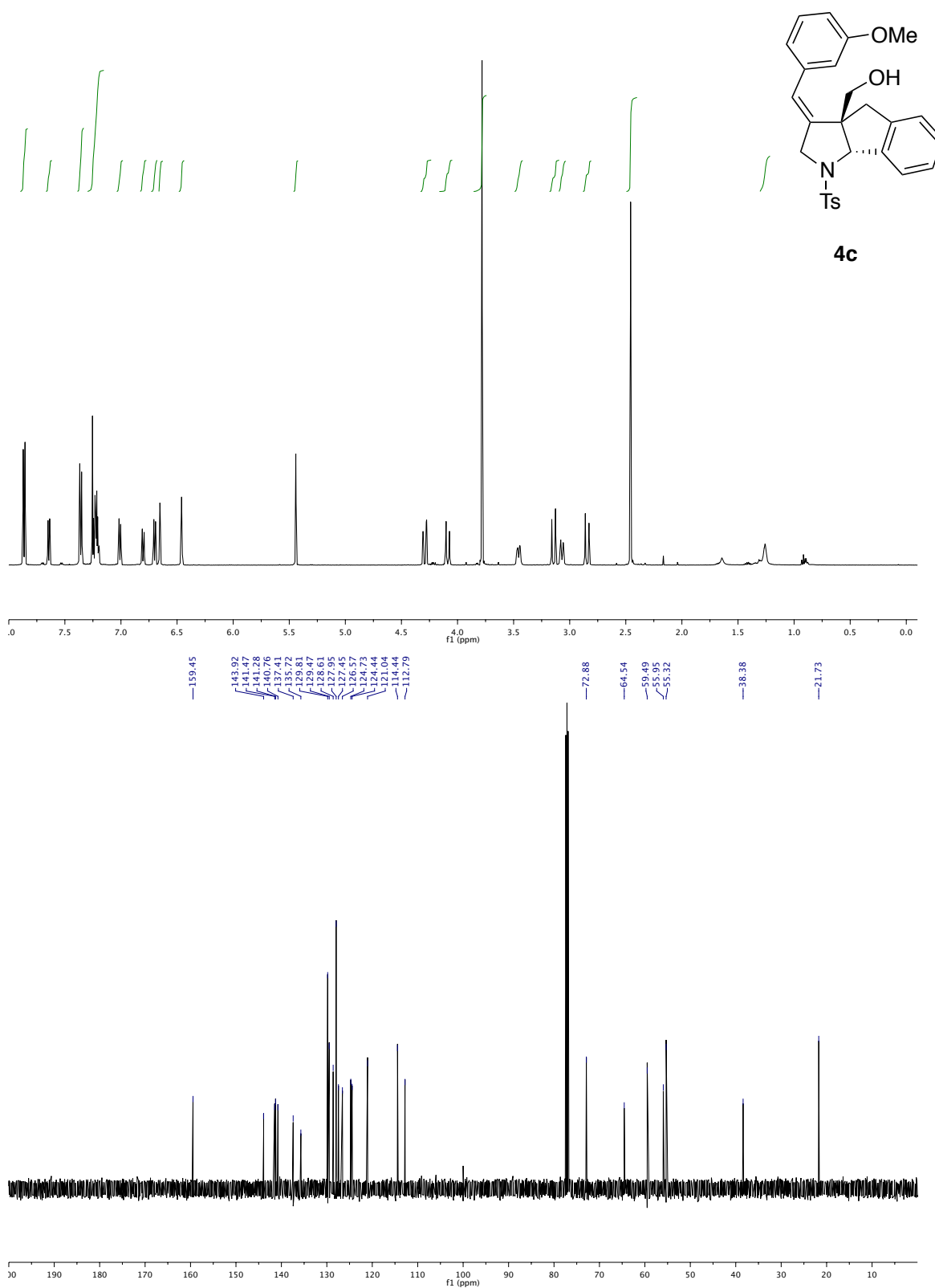


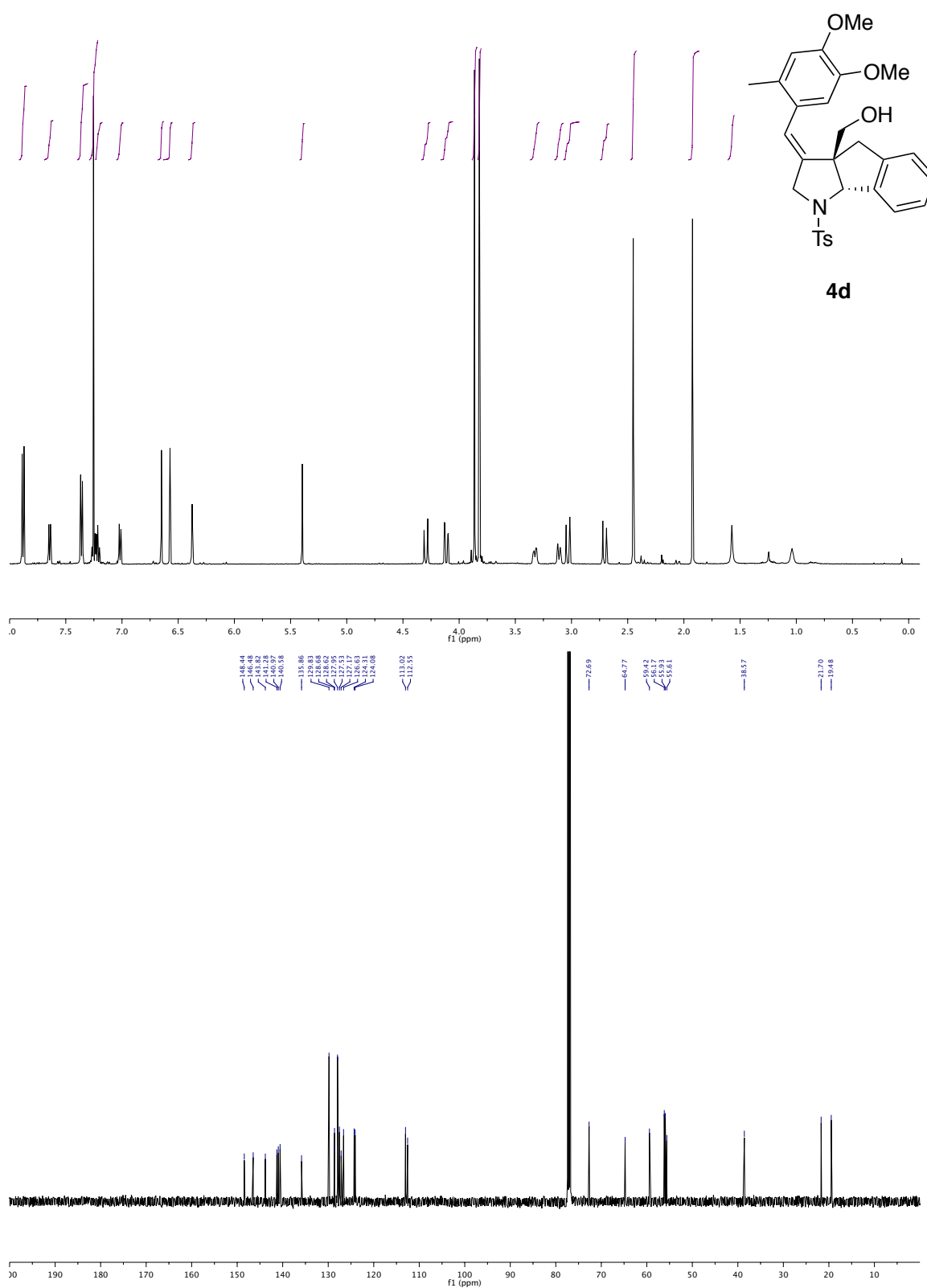


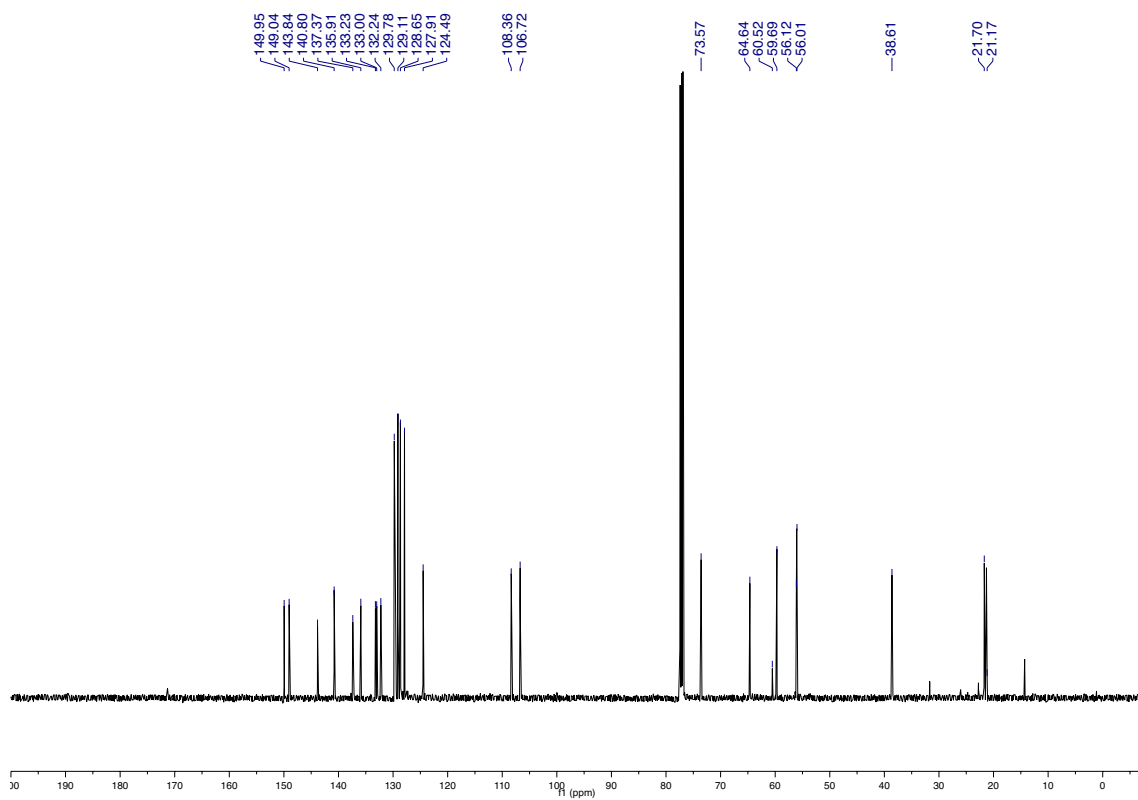
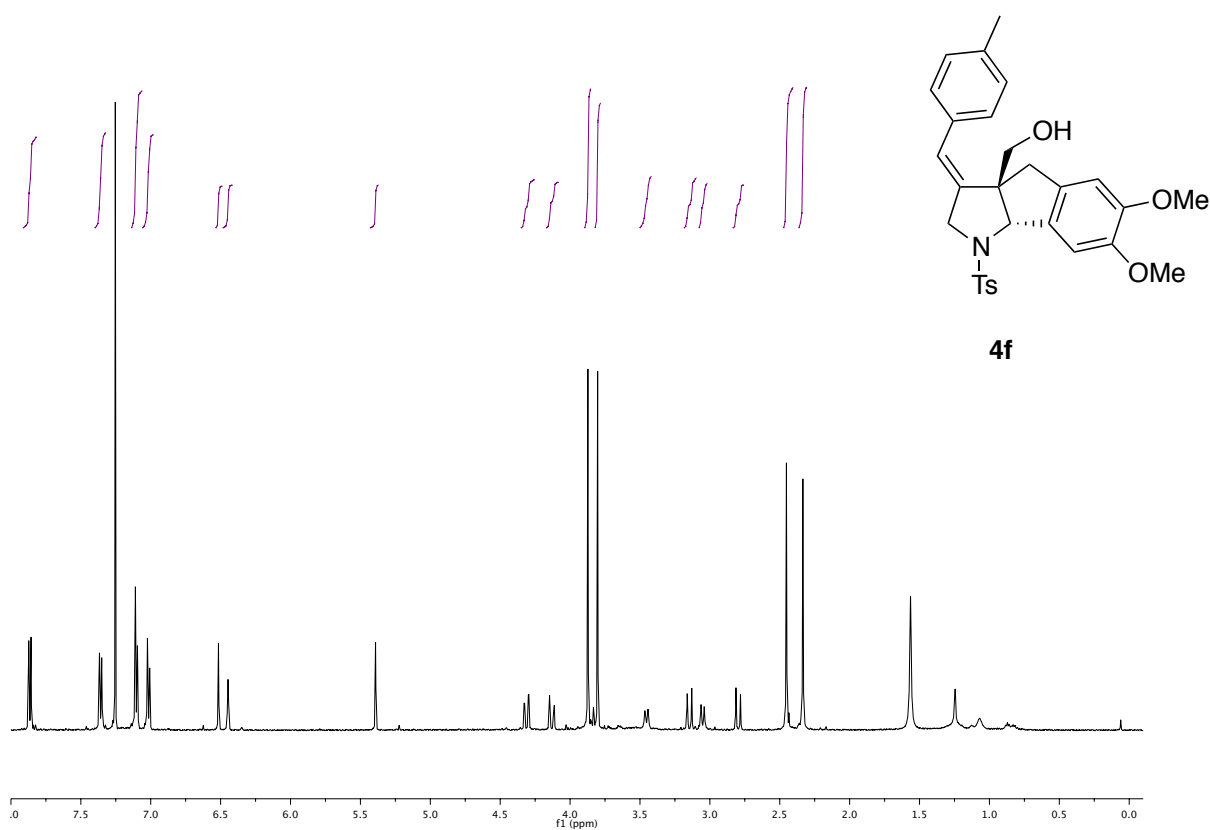
4a

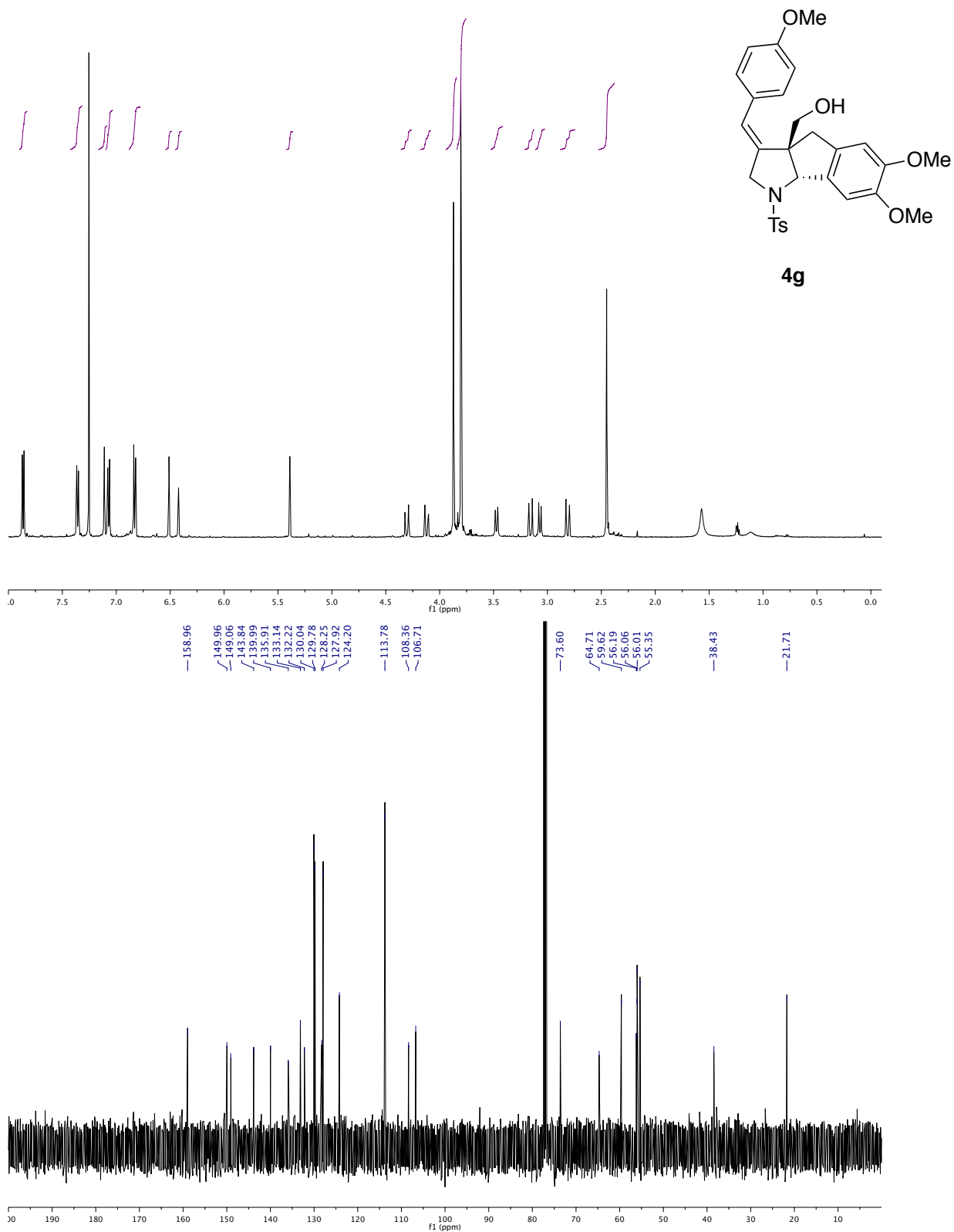


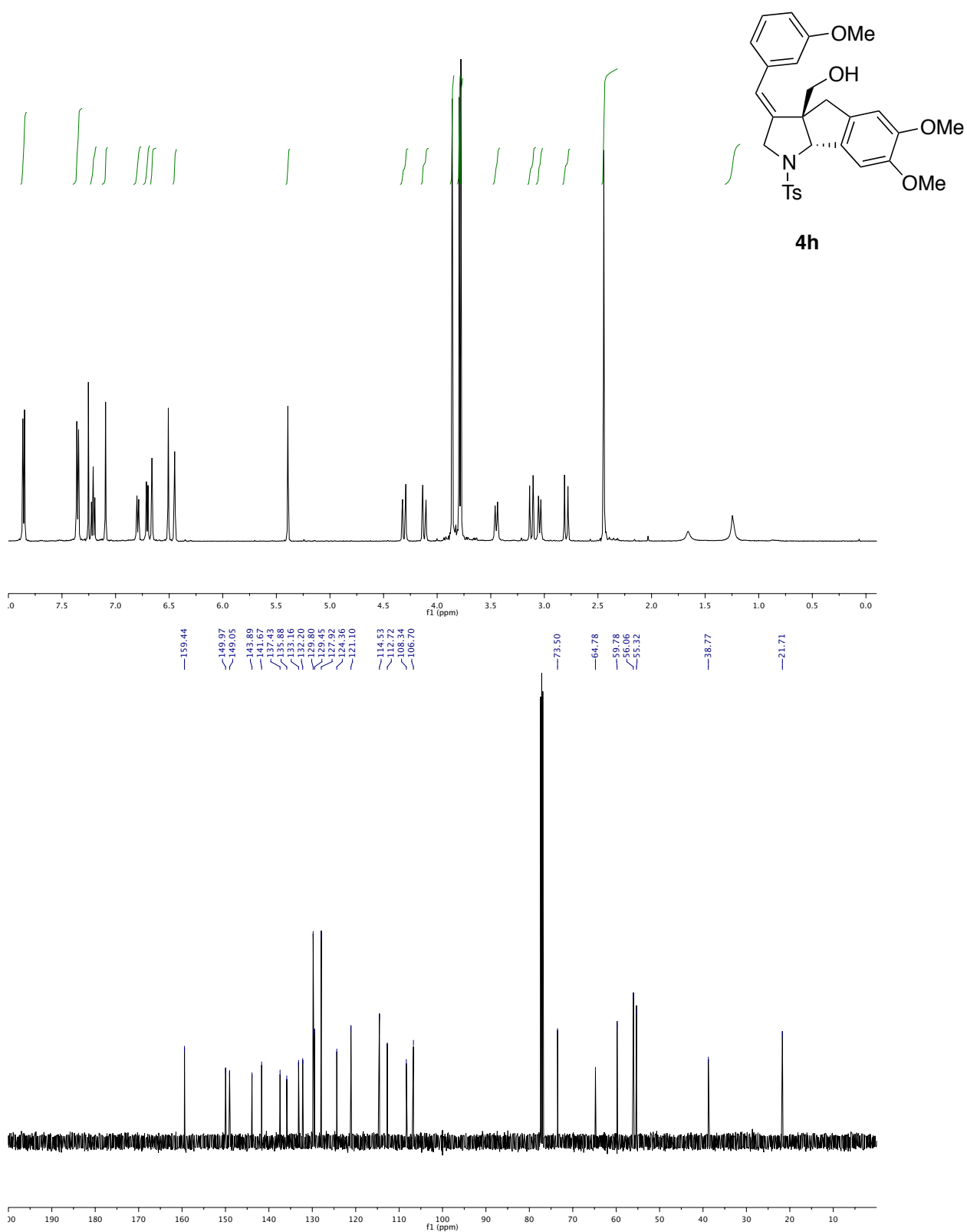


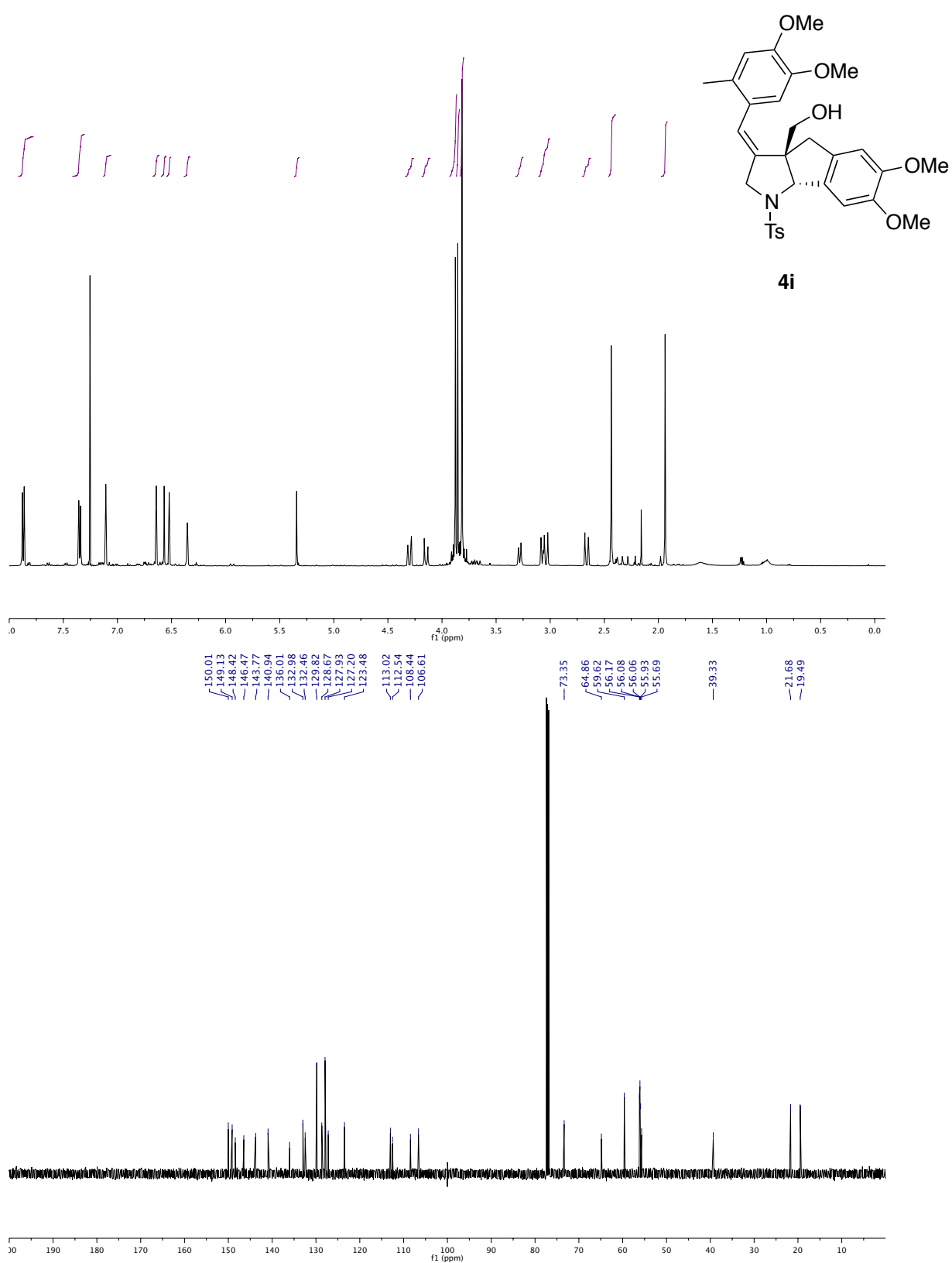


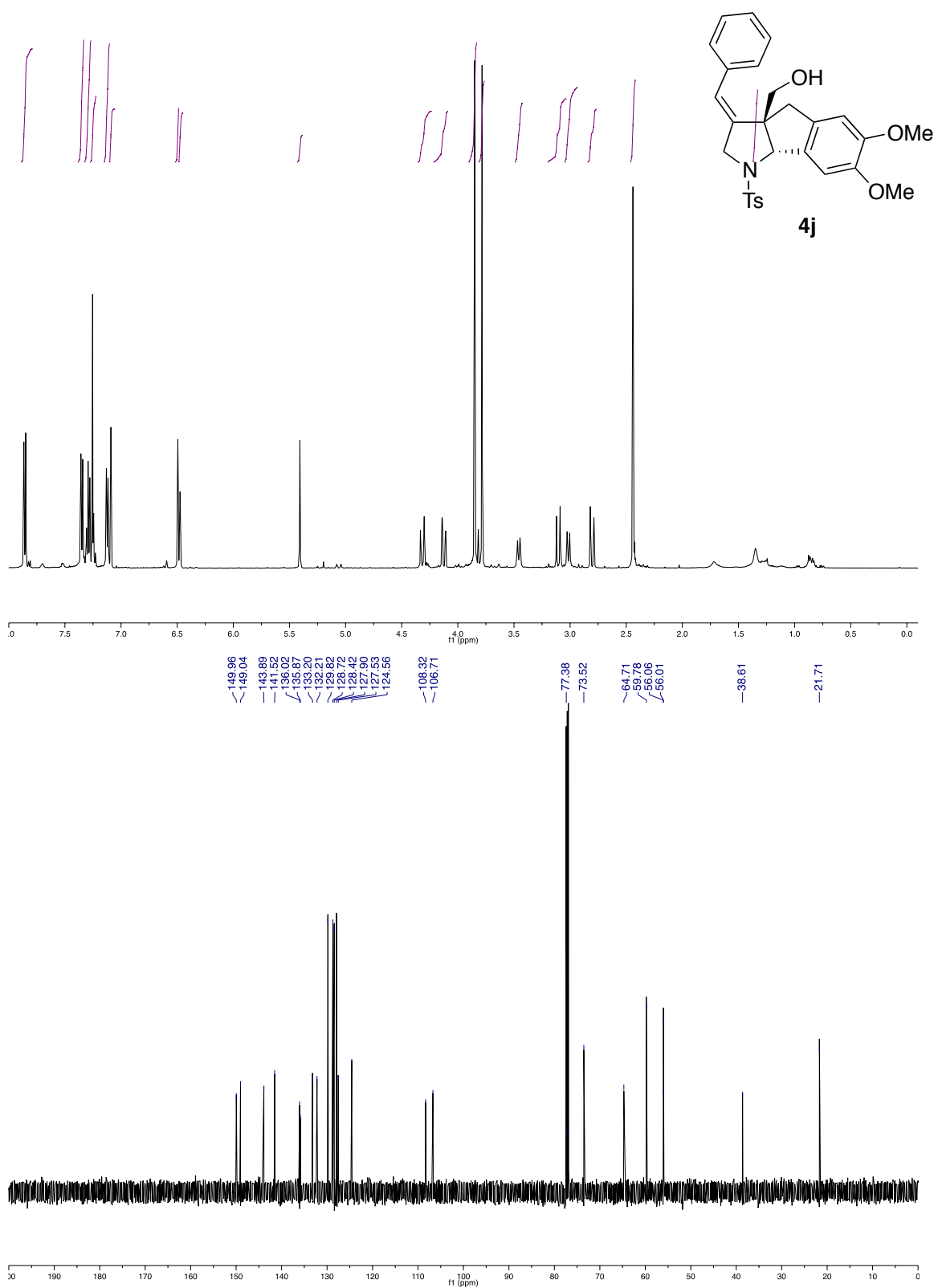


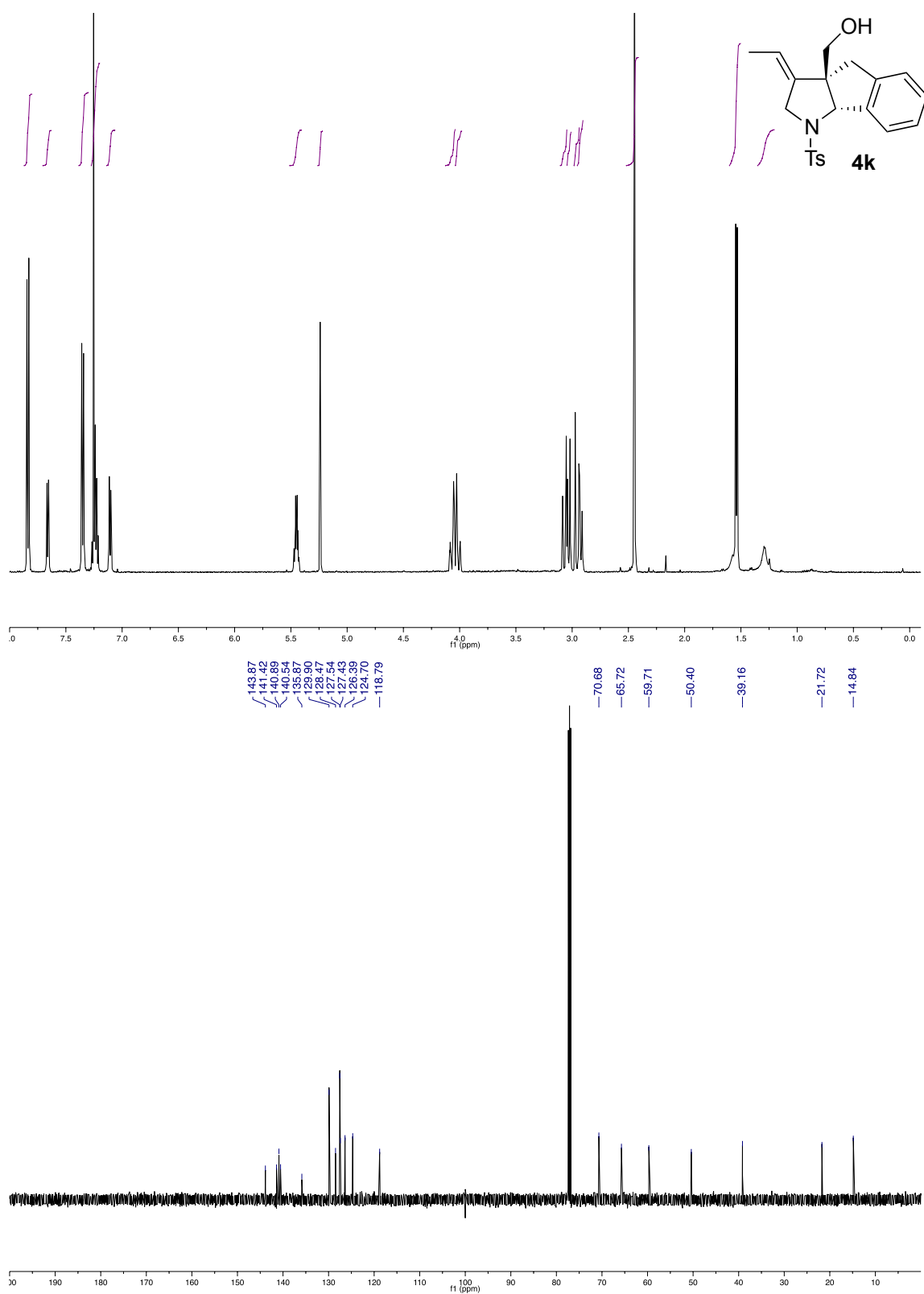


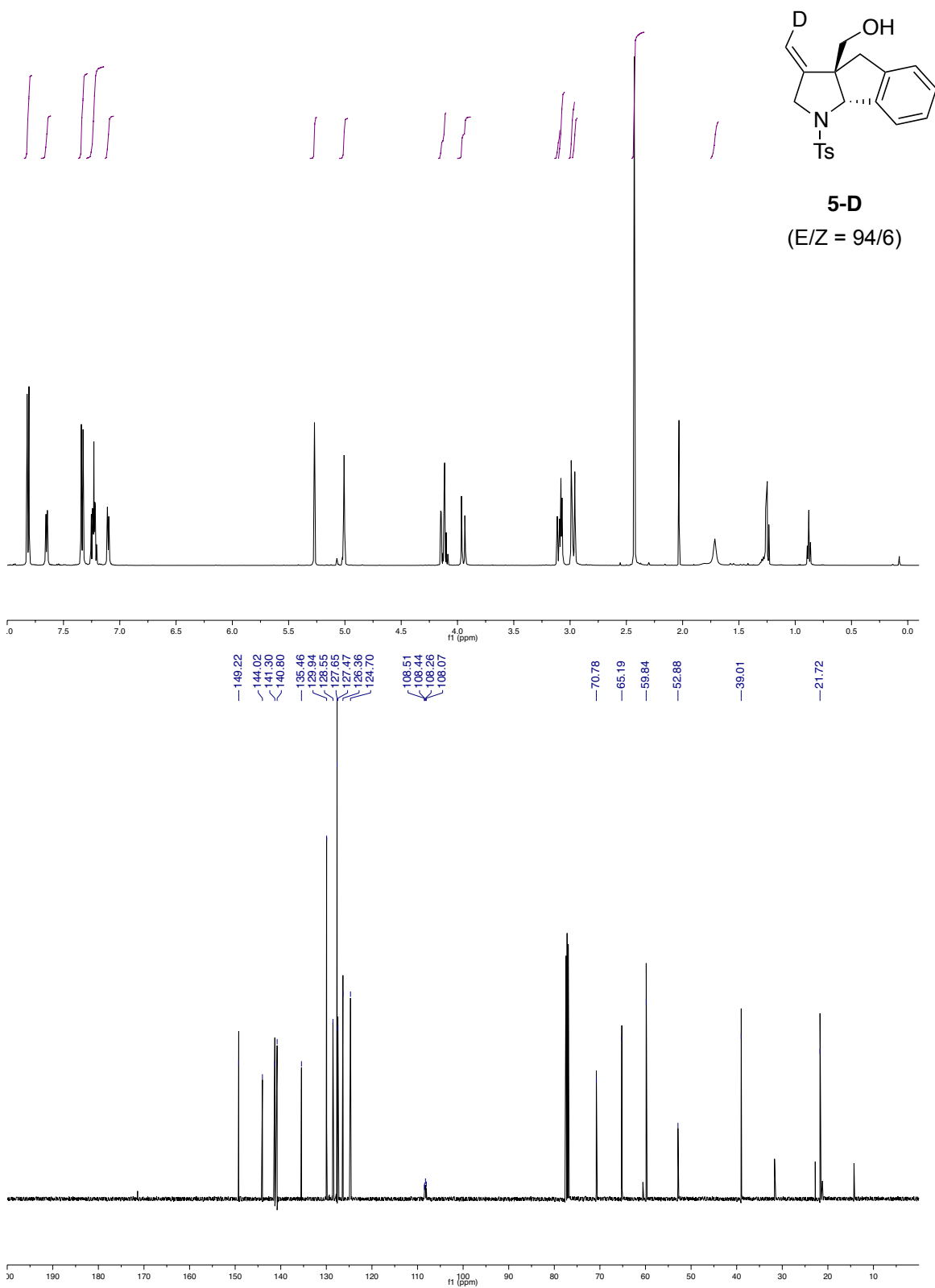


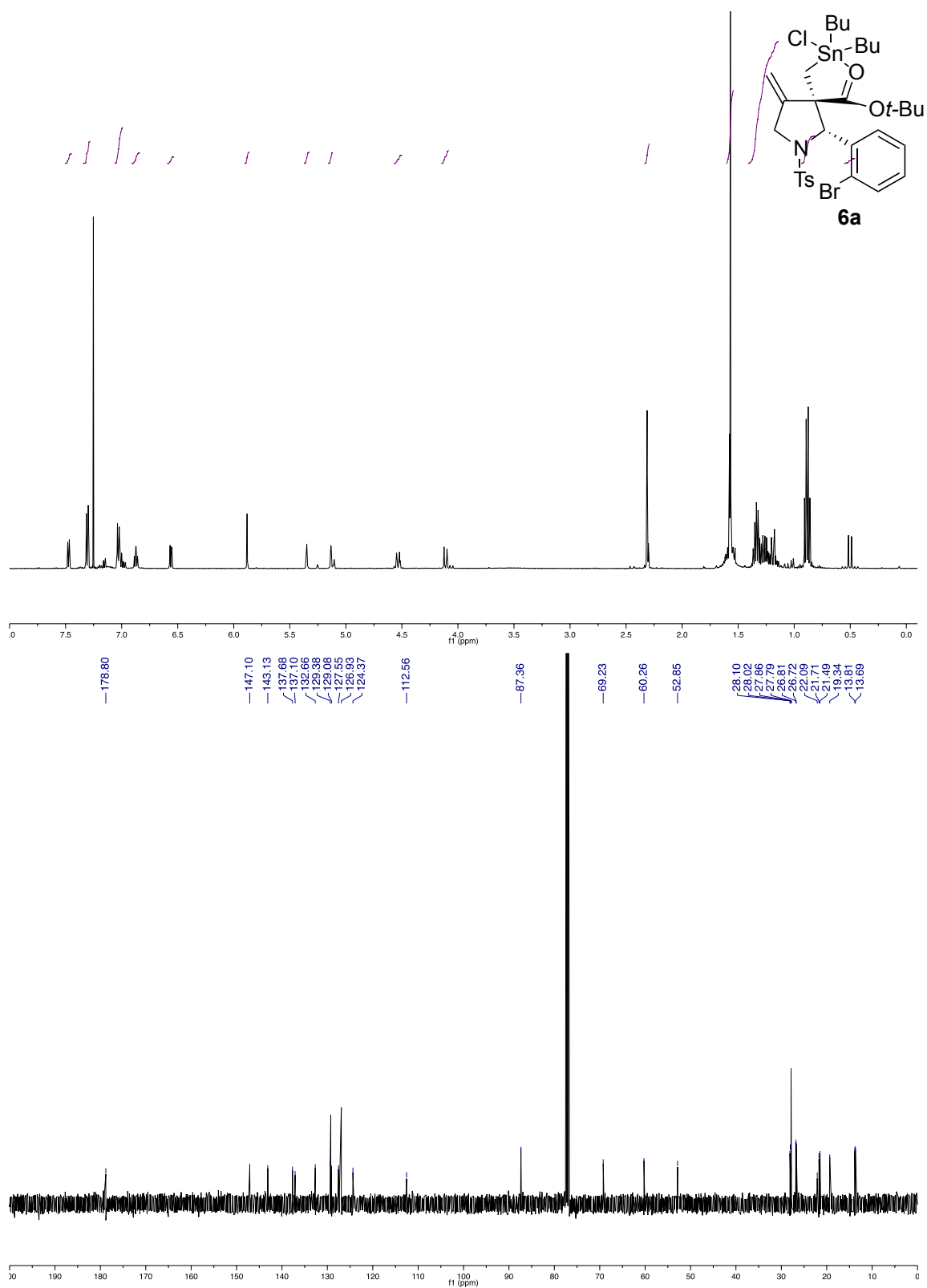


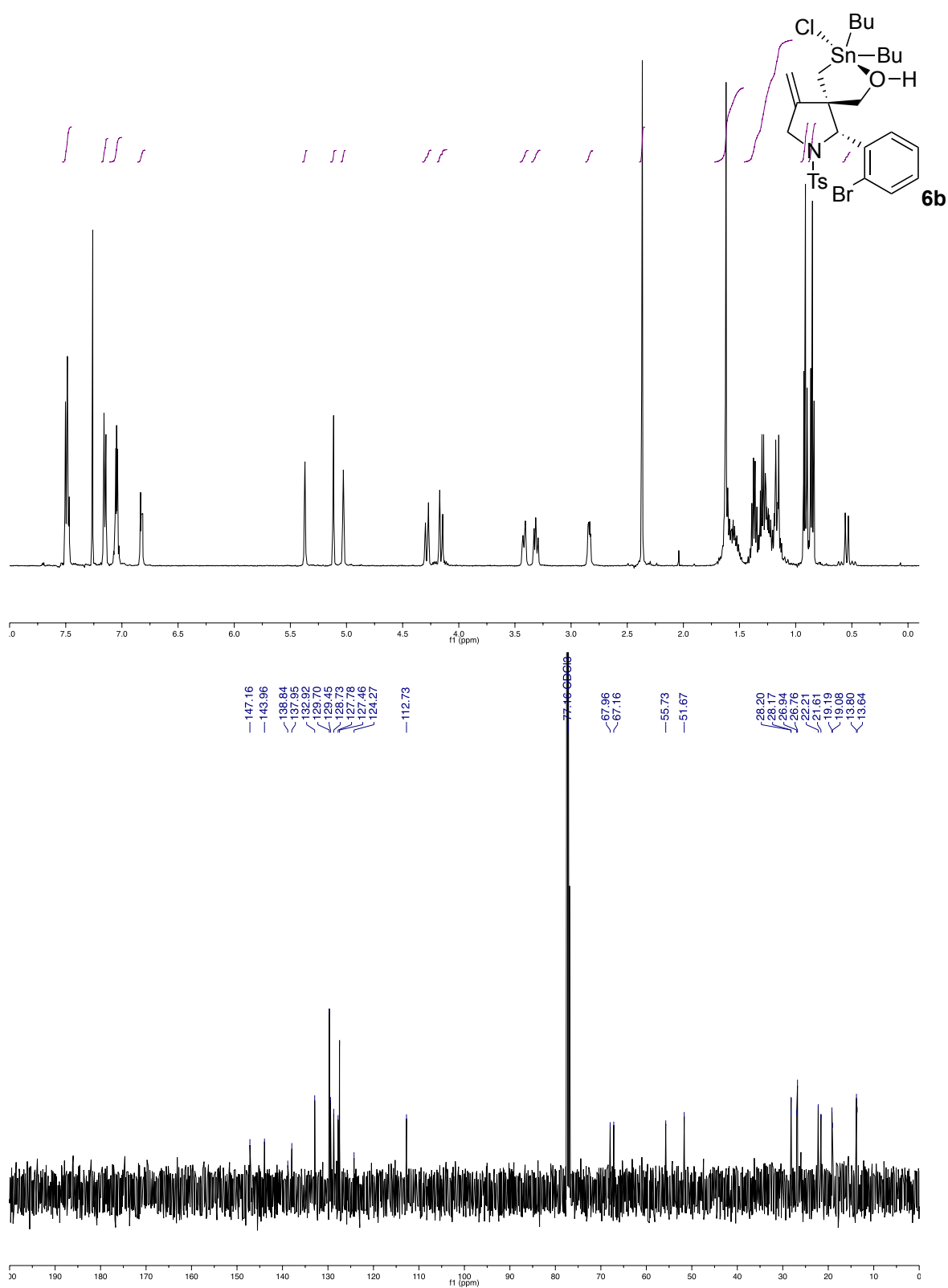


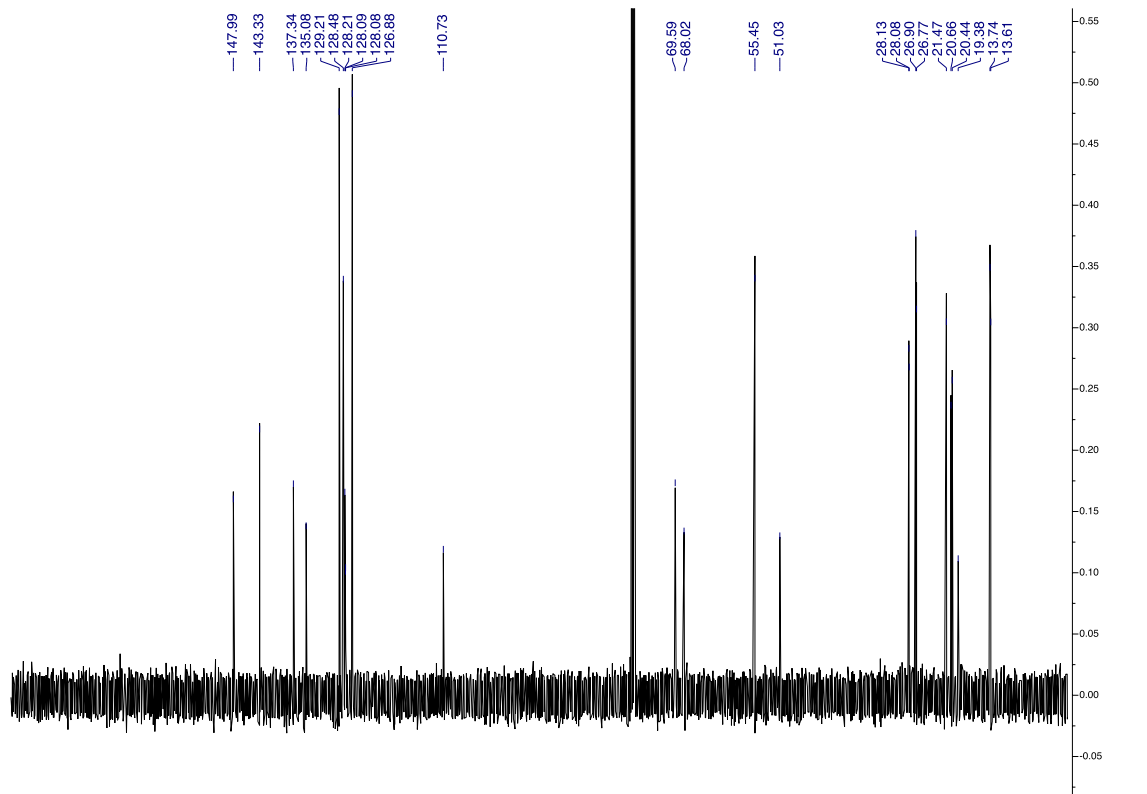
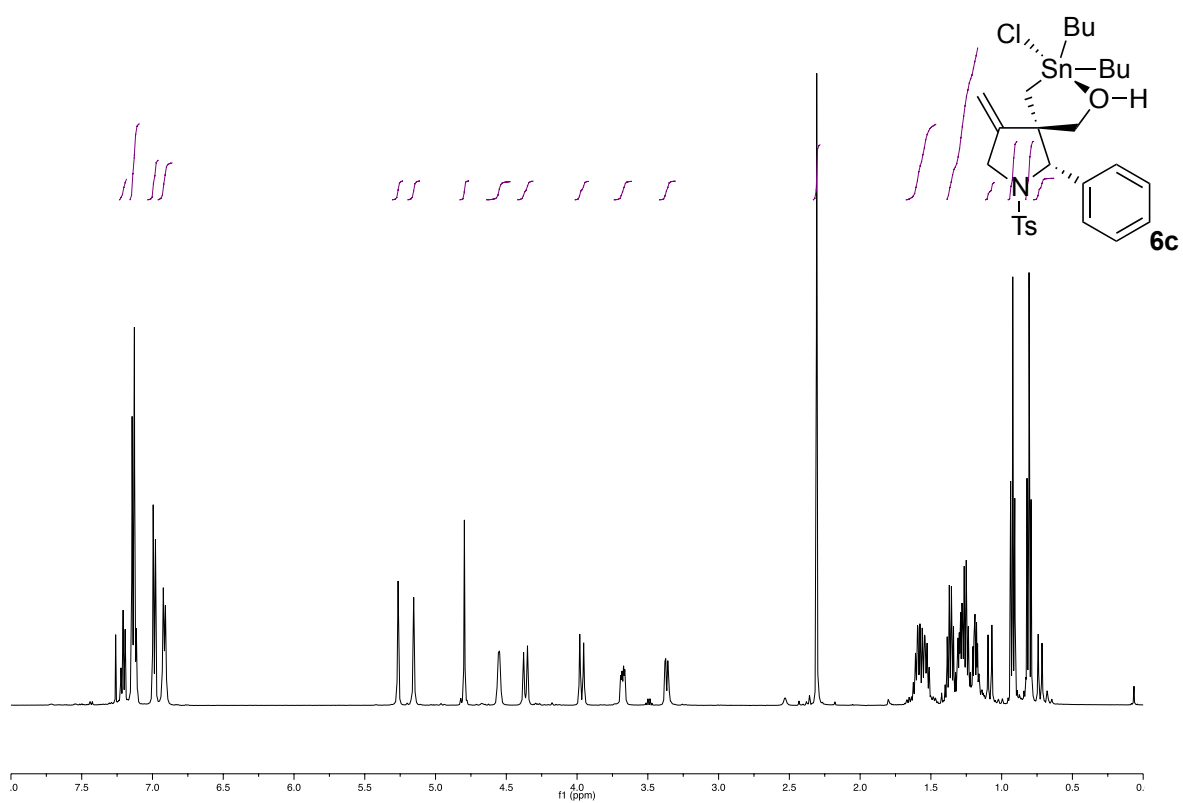


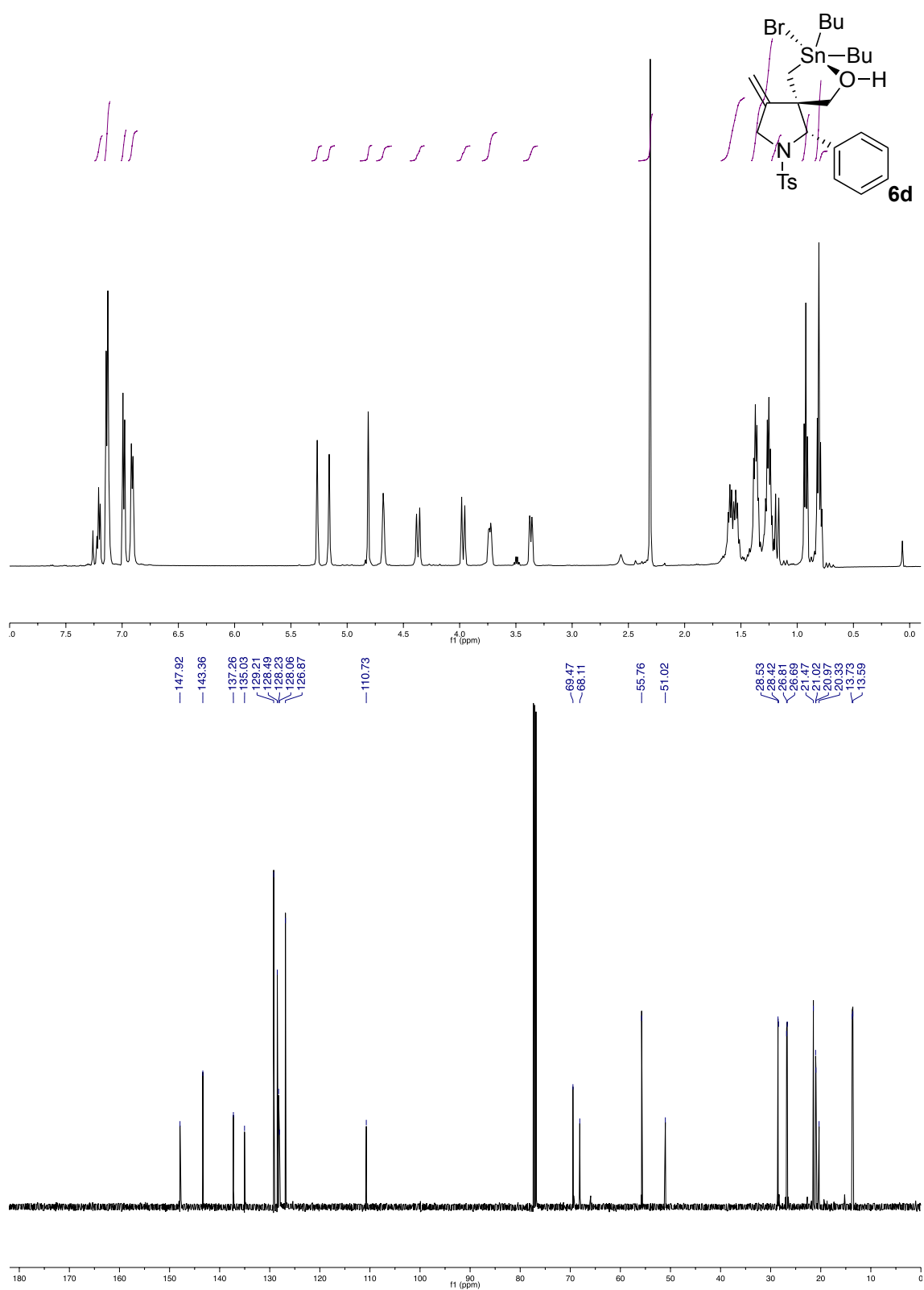




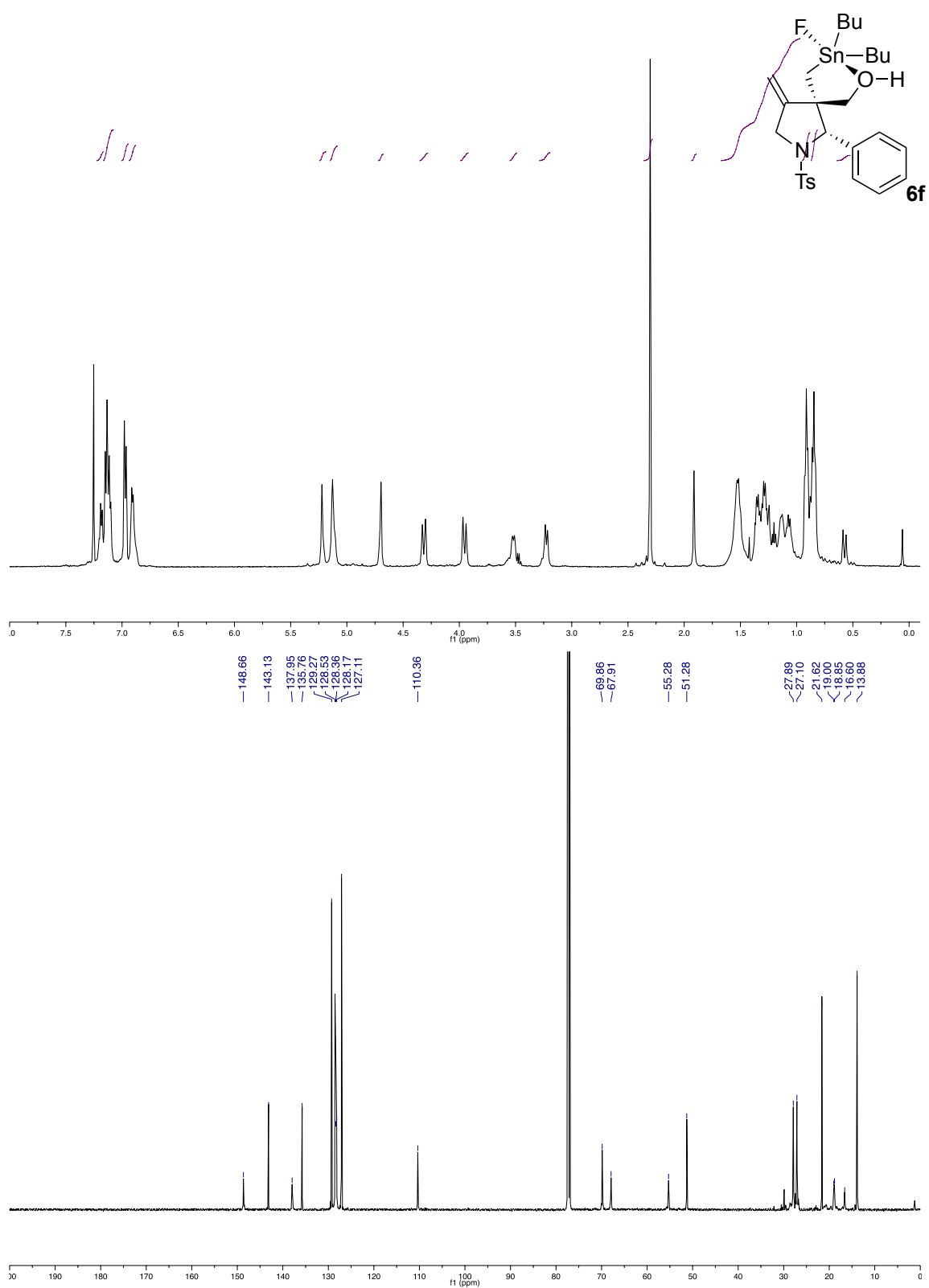


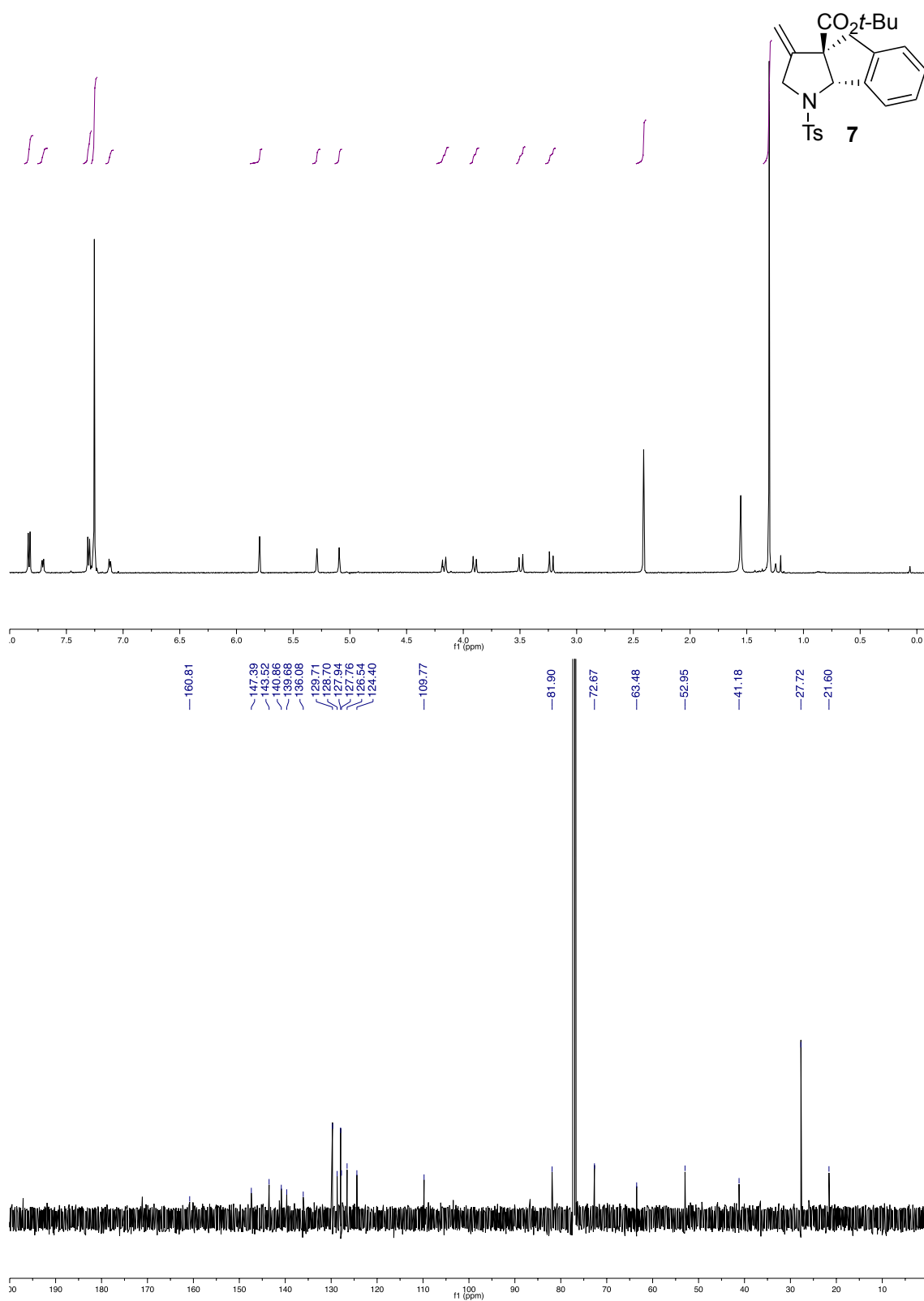


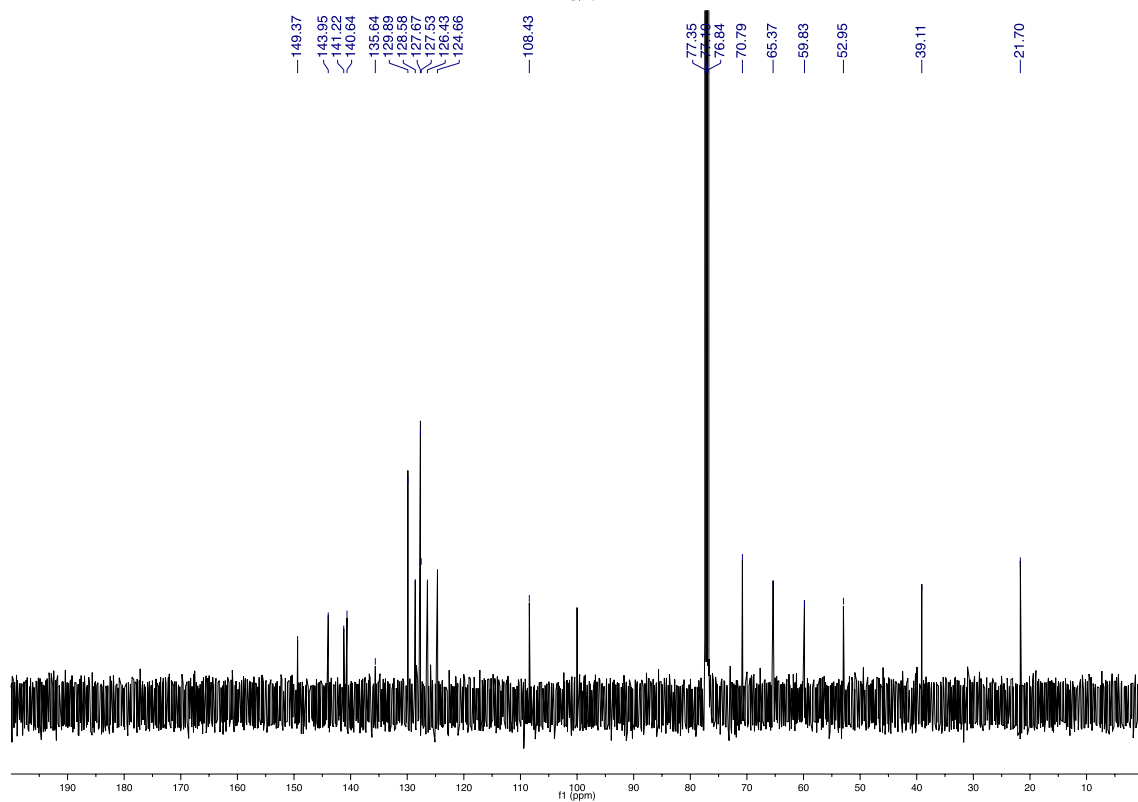
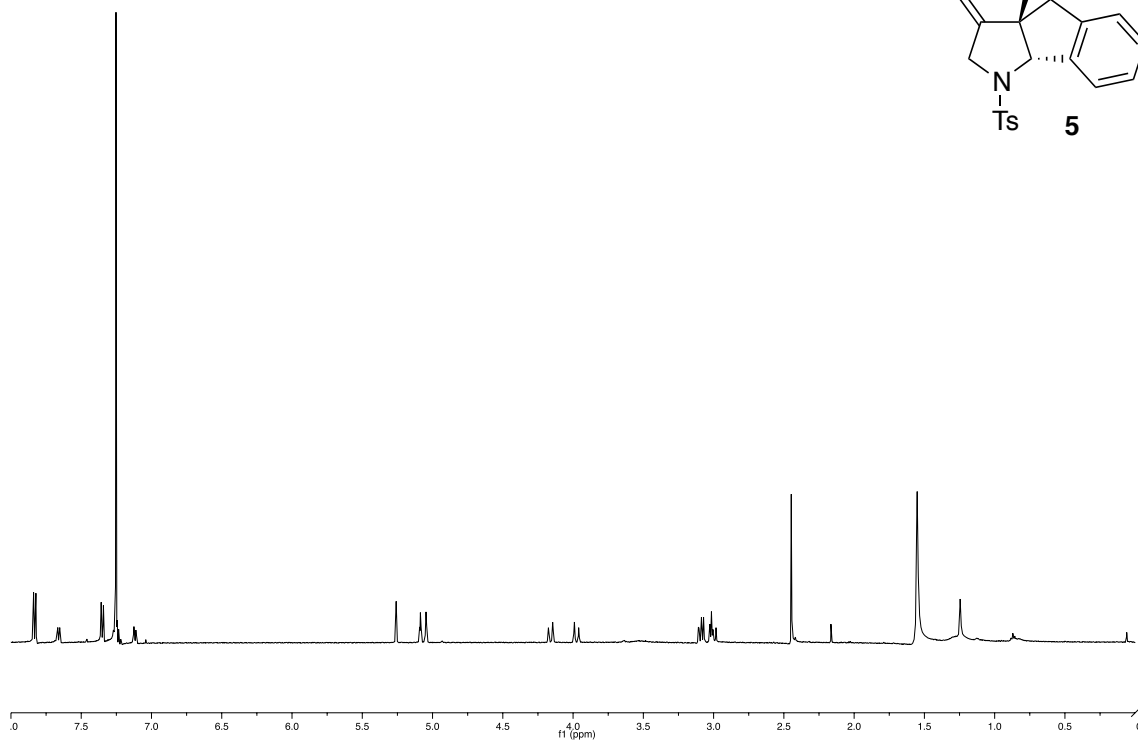
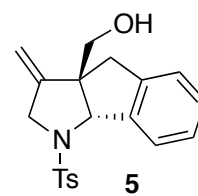


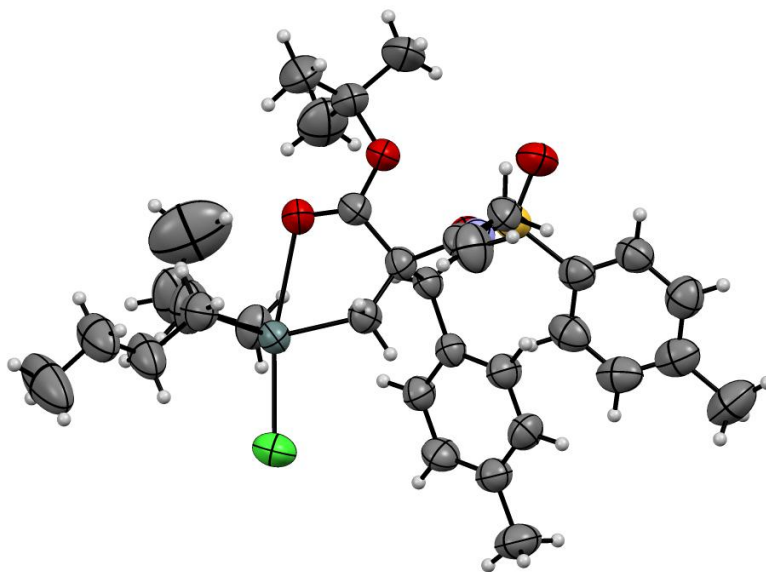


147.92
143.36
137.26
135.03
129.21
128.49
128.23
128.06
126.87
110.73
69.47
68.11
55.76
51.02
28.53
28.32
26.81
26.69
21.47
21.02
20.97
20.33
13.53







ORTEP chart for **6e**