

Supplementary material

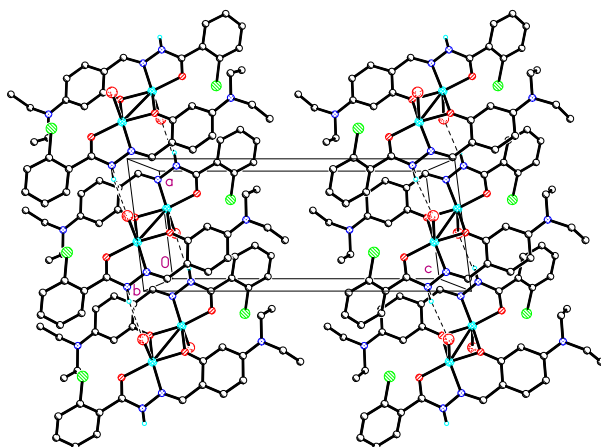


Figure S1. Molecular packing diagram of **1**, viewed along *b* axis. Hydrogen bonds are shown as dashed lines.

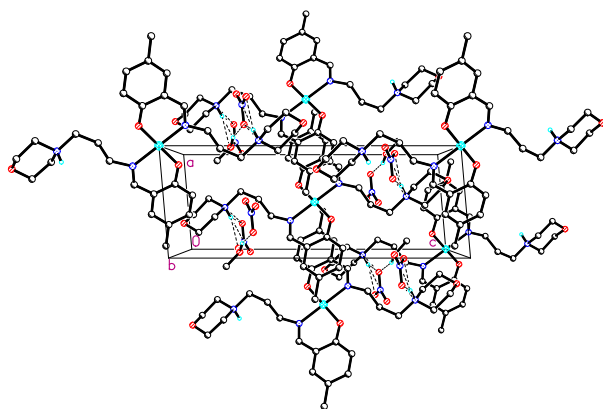


Figure S2. Molecular packing diagram of **2**, viewed along *b* axis. Hydrogen bonds are shown as dashed lines.

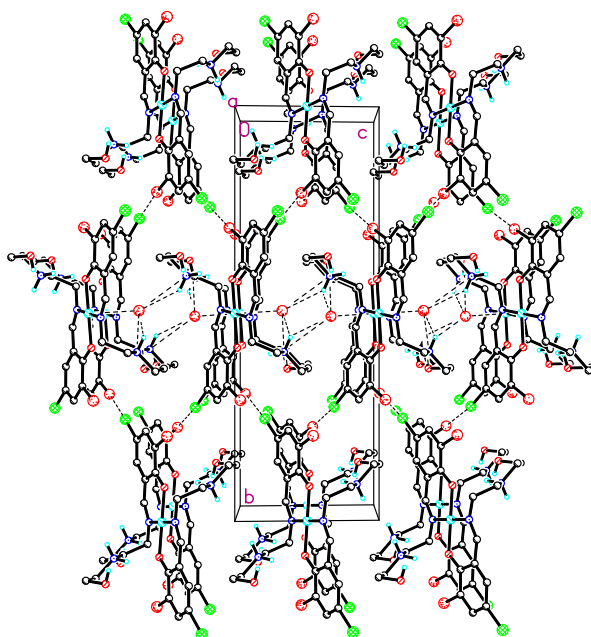


Figure S3. Molecular packing diagram of **3**, viewed along *a* axis. Hydrogen bonds are shown as dashed lines.

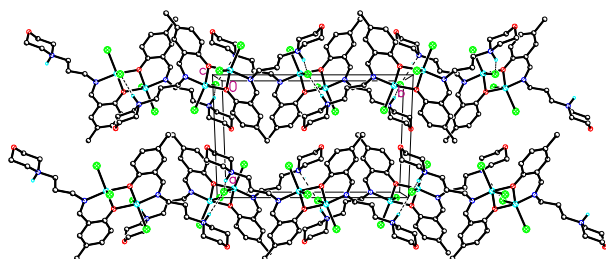


Figure S4. Molecular packing diagram of **5**, viewed along *c* axis. Hydrogen bonds are shown as dashed lines.

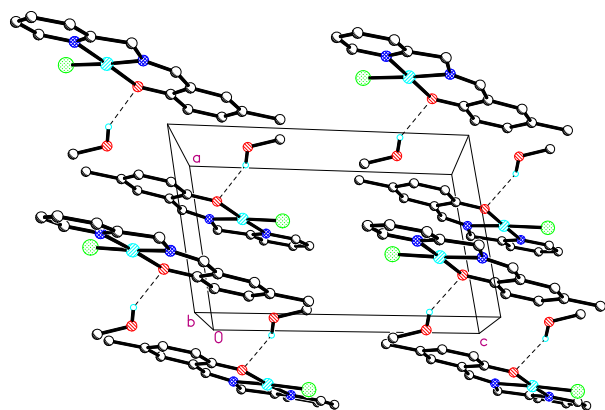


Figure S5. Molecular packing diagram of **8**, viewed along *b* axis. Hydrogen bonds are

shown as dashed lines.

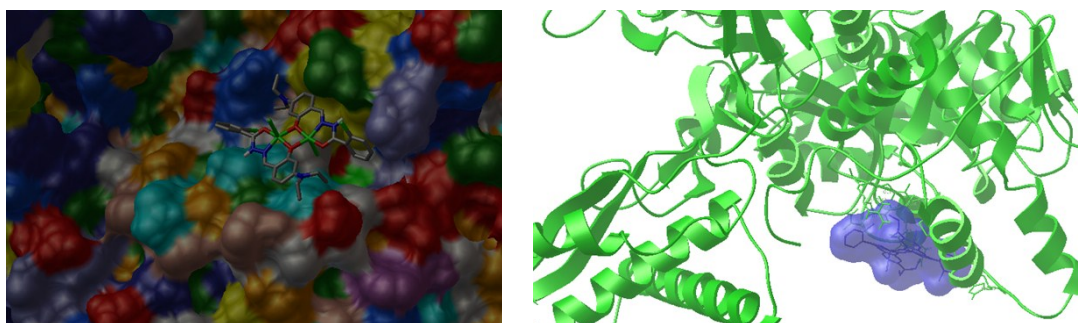


Figure S6. Binding mode of **1** with *Helicobacter pylori* urease. Left: The enzyme is shown as surface, and the complex is shown as sticks. Right: The enzyme is shown as ribbons, and the complex is shown as sticks.

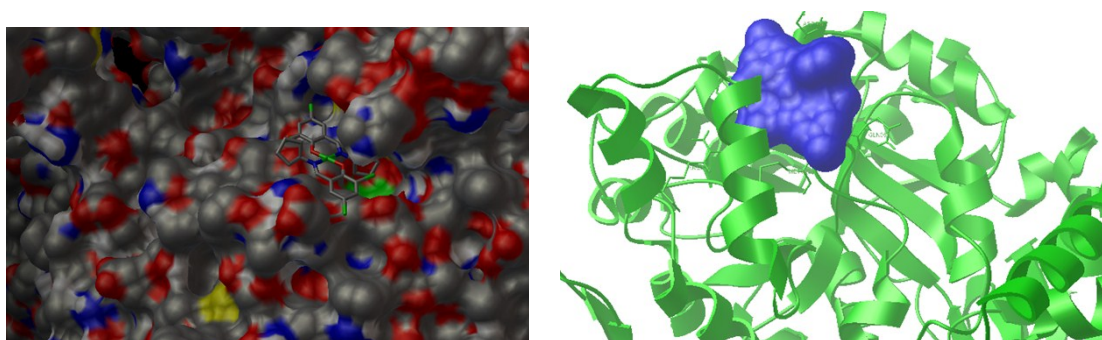


Figure S7. Binding mode of **4** with *Helicobacter pylori* urease. Left: The enzyme is shown as surface, and the complex is shown as sticks. Right: The enzyme is shown as ribbons, and the complex is shown as sticks.

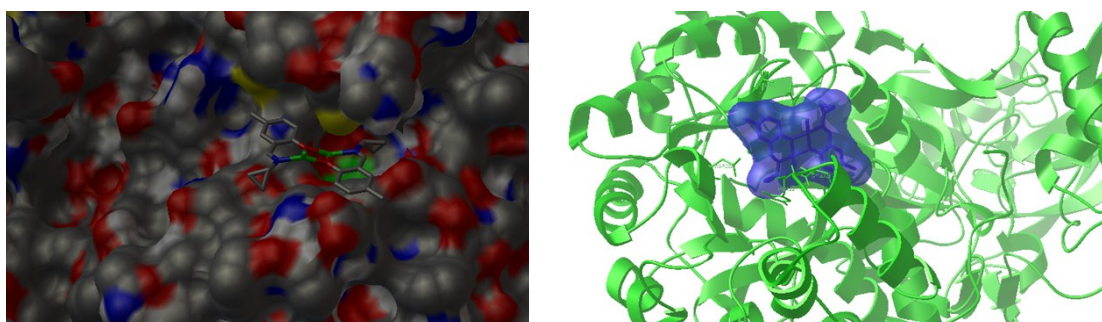


Figure S8. Binding mode of **6** with *Helicobacter pylori* urease. Left: The enzyme is shown as surface, and the complex is shown as sticks. Right: The enzyme is shown as

ribbons, and the complex is shown as sticks.

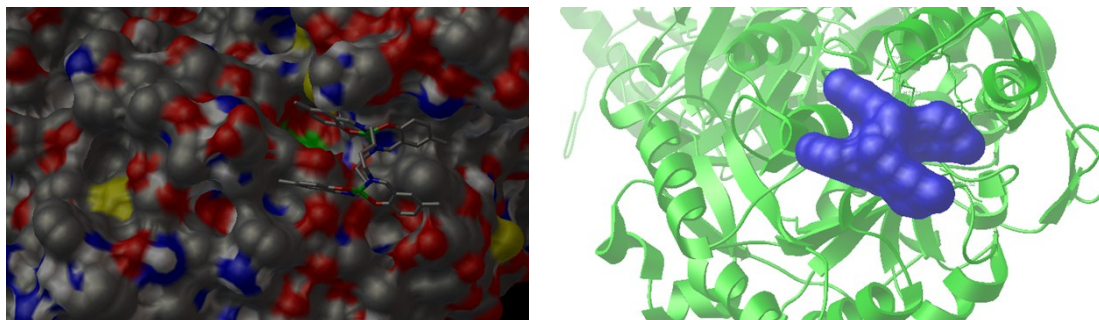


Figure S9. Binding mode of **9** with *Helicobacter pylori* urease. Left: The enzyme is shown as surface, and the complex is shown as sticks. Right: The enzyme is shown as ribbons, and the complex is shown as sticks.

