

Supporting Information

Graphene-constructed flower-like porous Co(OH)₂ with tunable hierarchical morphologies for supercapacitors

Qi Huang, Jinzuan Wang, Fan Liu, Xing Chang, Hongyan Chen, Hualin Lin*, and Sheng Han*

School of Chemical and Environmental Engineering, Shanghai Institute of Technology, Shanghai 201418, China. E-mail: lhl6534@163.com and hansheng654321@sina.com

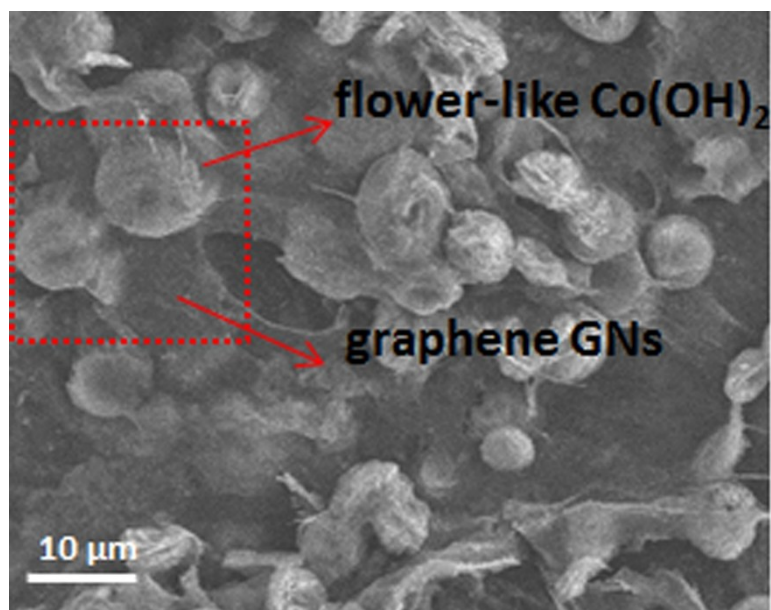


Fig. S1 SEM image of GFC (1:10).

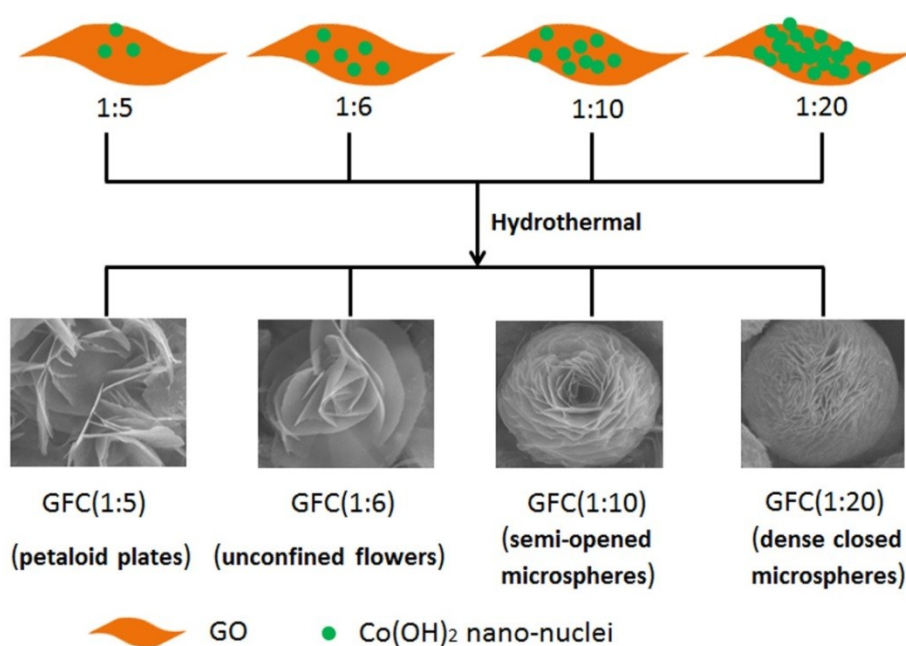


Fig. S2 Schematic illustration of the growth morphologies of Co(OH)₂ of GFC. (1:5), (1:6), (1:10), and (1:20) present the GO : Co(Ac)₂·4H₂O weight ratios of (1:5), (1:6), (1:10), and (1:20), respectively, in the process of the synthesis.

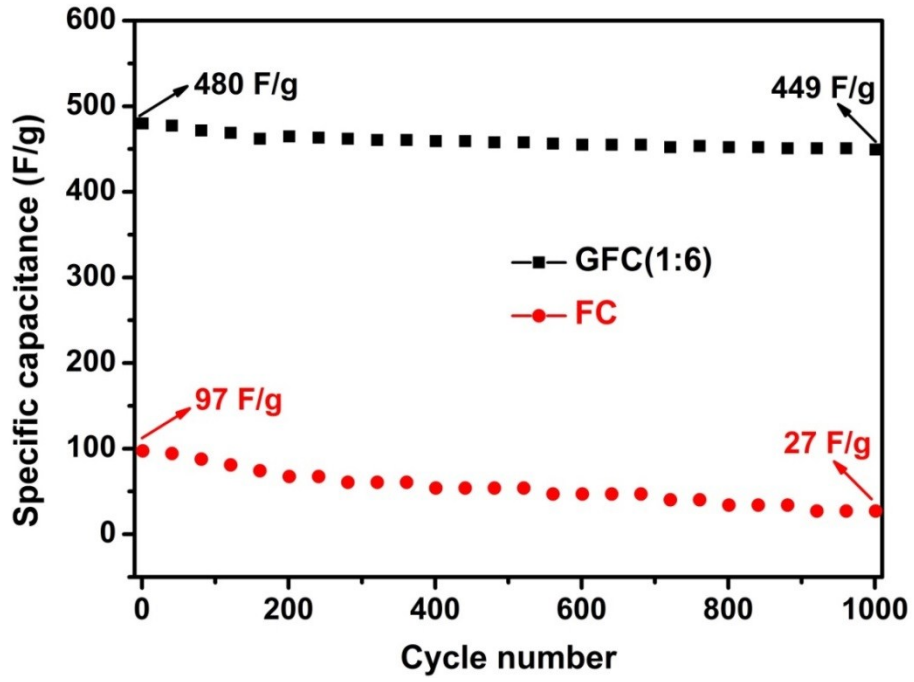


Fig. S3 Cycling performance of FC and GFC (1:6) at a current density of 1 A/g.

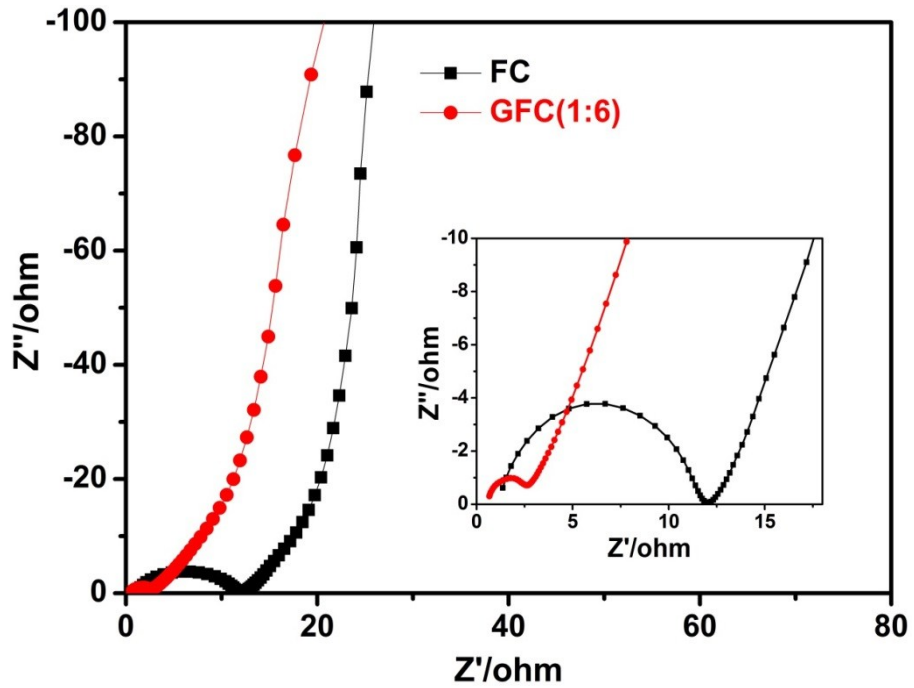


Fig. S4 Nyquist plots of FC and GFC (1:6) electrodes.