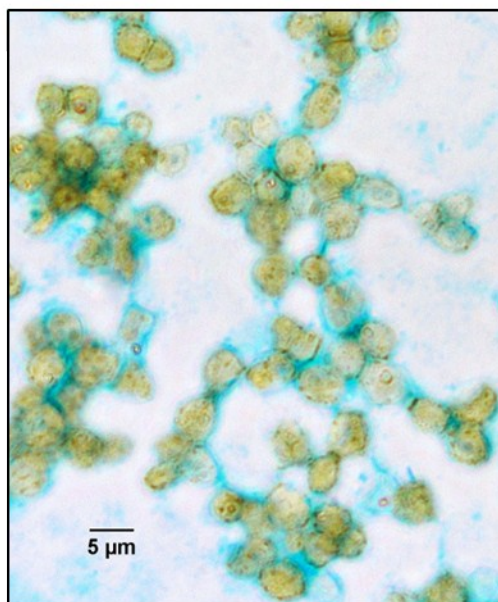


1



2

3 Fig. S1. Microscopic image of microalgal cells stained with Alcian blue, viewed under phase
4 contrast illumination (40x). Stain has been taken up by the polysaccharide material around the
5 cells.

6

7

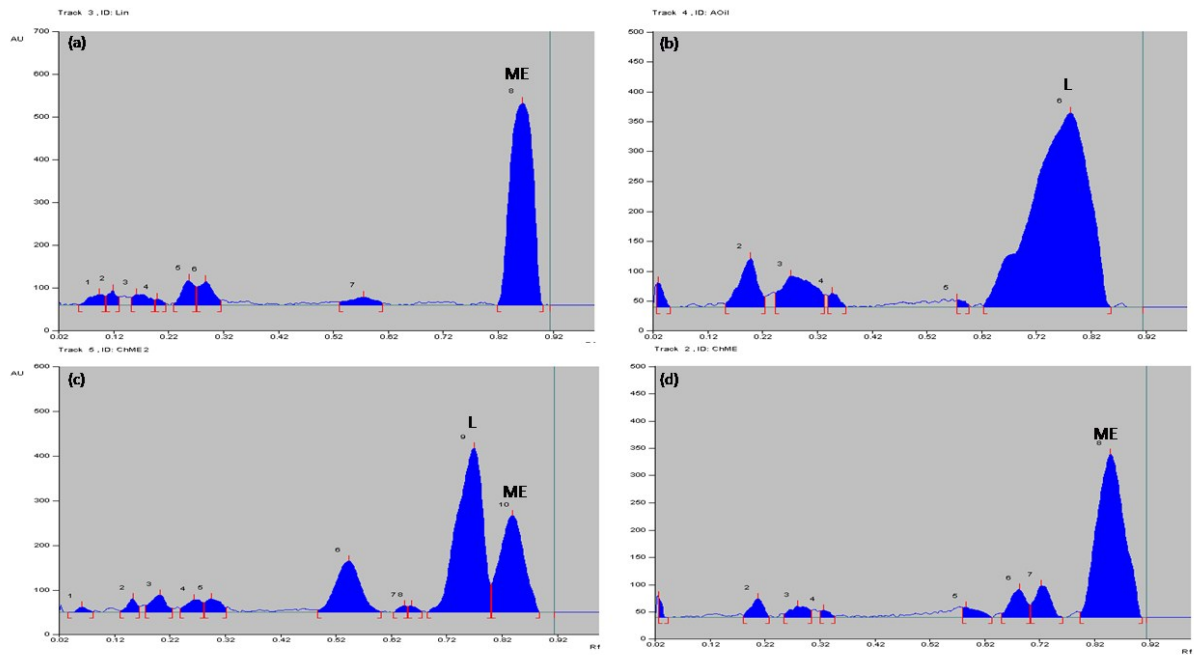
8

9

10

11

12



13

14 Fig. S2. Two-dimensional HPTLC chromatogram of lipid and FAME (a) standard methyl
 15 linoleate (ME) (Rf 0.82 – 0.92) (b) algal lipid (L) (Rf 0.72 – 0.82) (c) partially converted algal
 16 lipid with some L and ME (d) algal FAME (biodiesel).

17