

**Supplementary Information for:**

**Activatable colorimetric and fluorogenic probe for fluoride detection by oxazoloindole-to-hydroxyethylindolium transformation**

**Mijin Yoo, Seokan Park and Hae-Jo Kim\***

*Department of Chemistry, Hankuk University of Foreign Studies, Yongin 449-791, Republic of Korea  
haejkim@hufs.ac.kr*

**Contents**

1. NMR spectra .....	S2
2. Mass spectra .....	S4
3. pH Profile .....	S5

## 1. NMR spectra

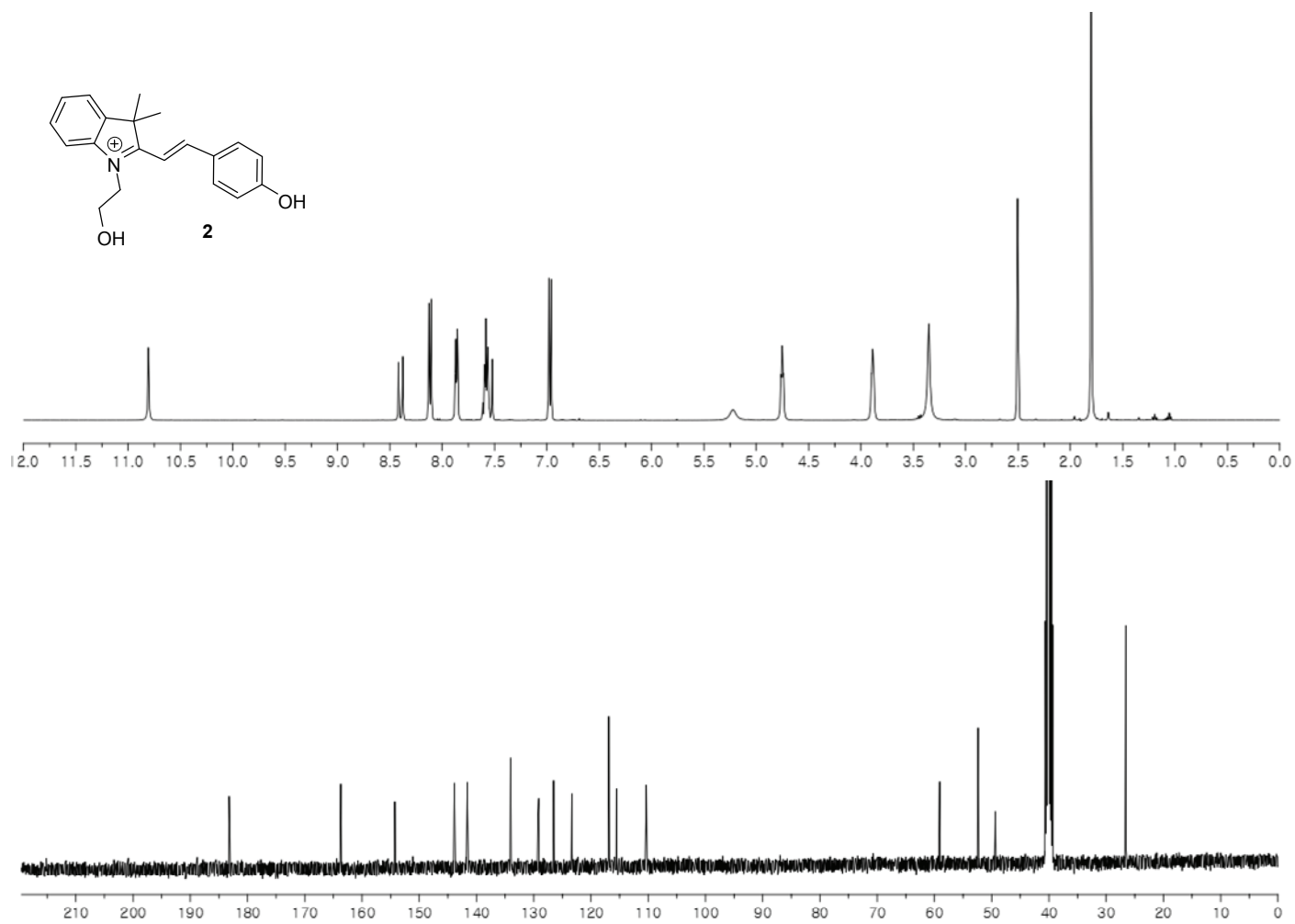


Fig. S1. 400 MHz  $^1\text{H}$  and 100 MHz  $^{13}\text{C}$  NMR spectra of **2** in  $\text{CDCl}_3$ .

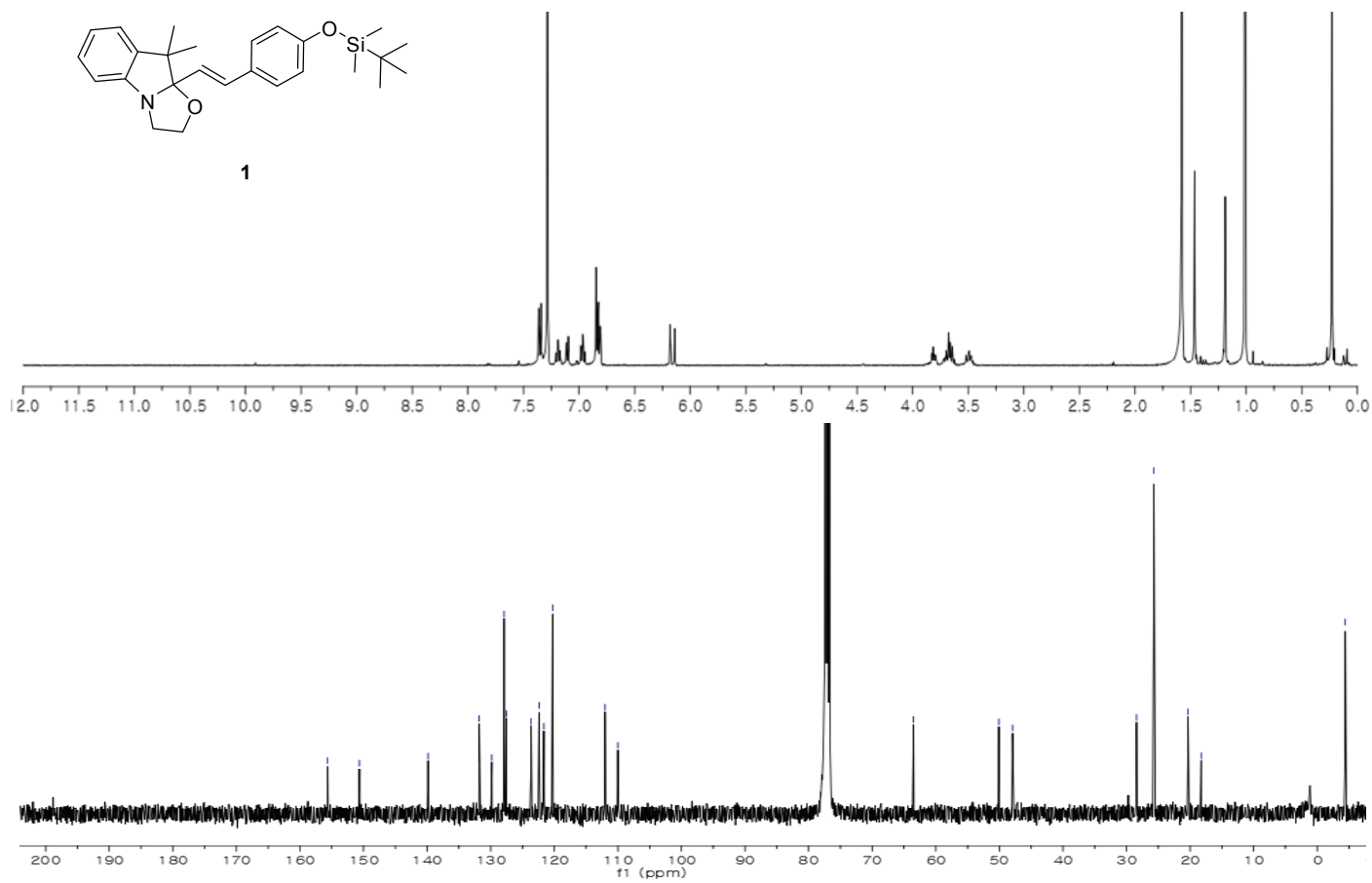


Fig. S2. 400 MHz <sup>1</sup>H and 100 MHz <sup>13</sup>C NMR spectra of **1** in CDCl<sub>3</sub>.

## 2. Mass spectra

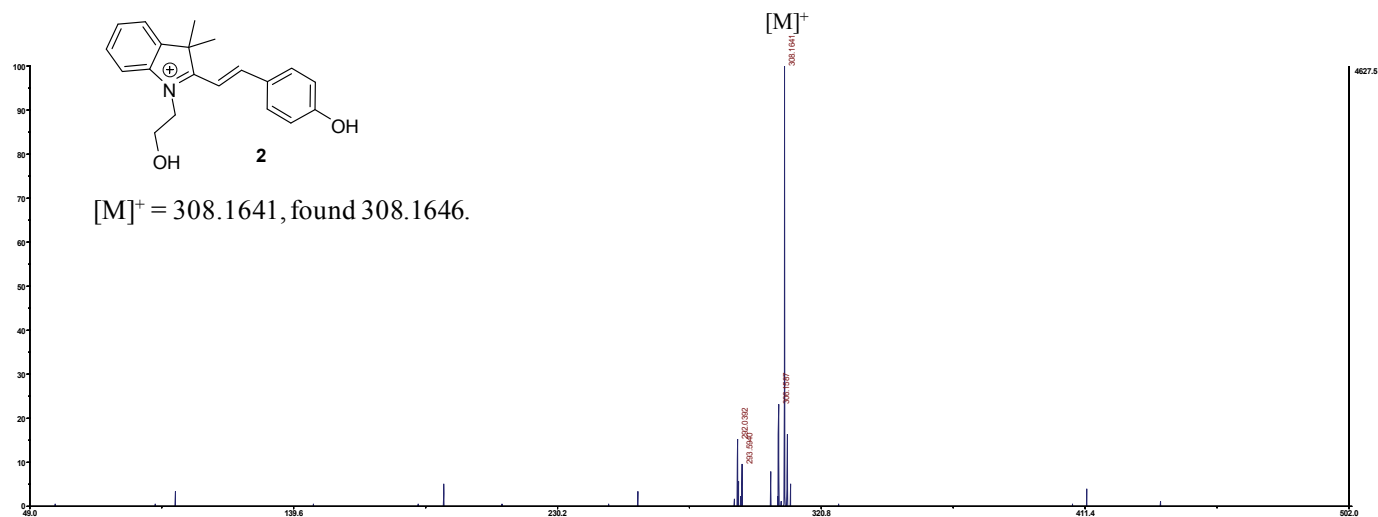


Fig. S3. MALDI-TOF mass spectra of **2**. HRMS (MALDI<sup>+</sup>, DHB):  $m/z$  obsd. 308.1641 ( $[M+H]^+$ ), calcd. 308.1646 for C<sub>20</sub>H<sub>22</sub>NO<sub>2</sub>.

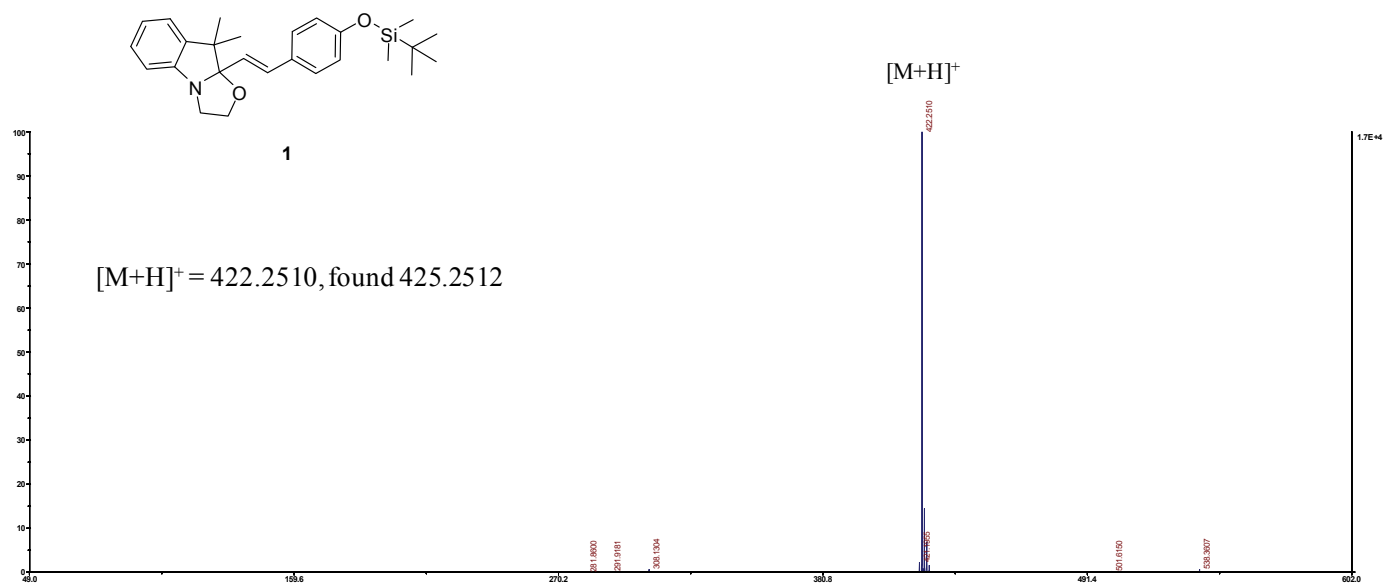


Fig. S4. MALDI-TOF mass spectra of **1**. HRMS (MALDI<sup>+</sup>, DHB):  $m/z$  obsd. 422.2510 ( $[M+H]^+$ ), calcd. 422.2512 for C<sub>26</sub>H<sub>35</sub>NO<sub>2</sub>Si.

### 3. pH Profile

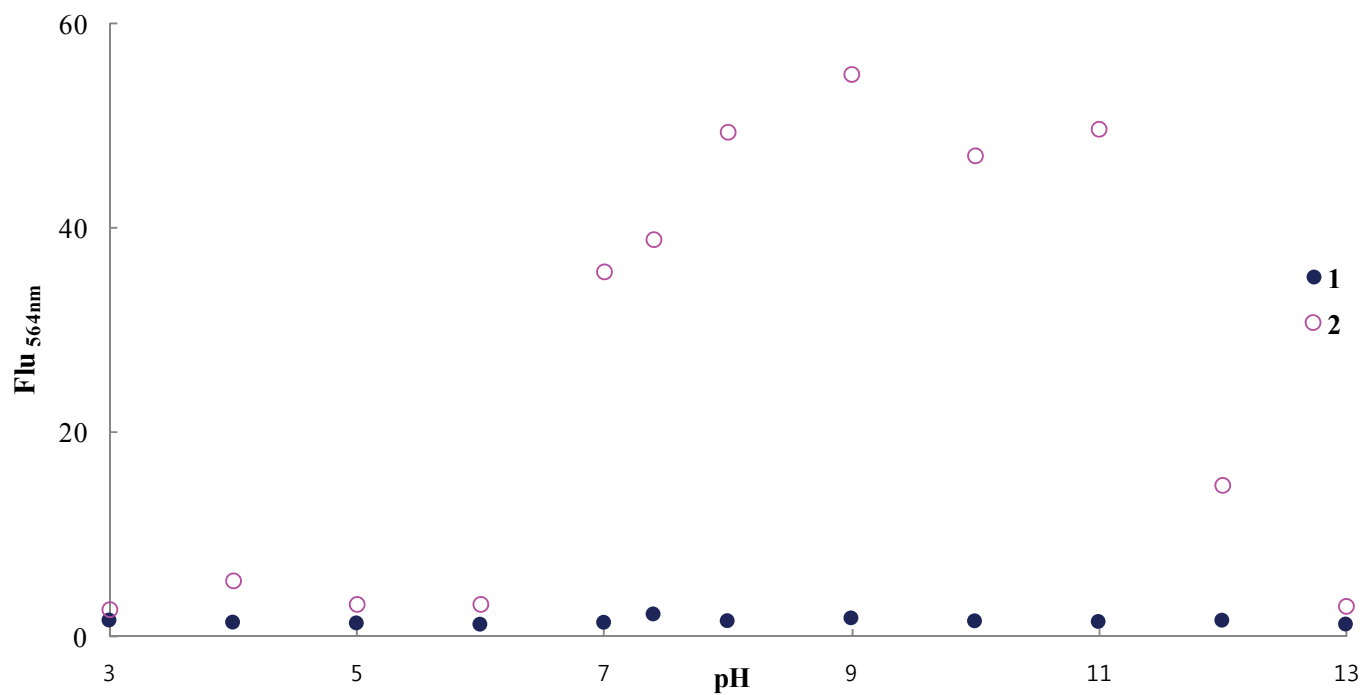


Fig. S5. Fluorescence titration graph of **FP-1** (20  $\mu$ M,  $\lambda_{\text{ex}}$  514 nm) on the addition of different amounts of  $\text{F}^-$  (0 - 0.6 mM) in 20% aqueous  $\text{CH}_3\text{CN}$  buffer (HEPES 10 mM, pH 7.4).