

## **Doxorubicin-loaded Ionic Liquid-Polydopamine nanoparticles for combined chemotherapy and microwave thermal therapy of cancer†**

Wenting Tang<sup>a</sup>, Bo Liu<sup>\*a</sup>, Shengping Wang<sup>b</sup>, Tianlong Liu<sup>\*b</sup>, Changhui Fu<sup>b</sup>, Xiangling Ren<sup>b</sup>, Longfei Tan<sup>b</sup>, Wubiao Duan<sup>a</sup>, and Xianwei Meng<sup>\*b</sup>

<sup>a</sup>School of Science, Beijing Jiaotong University, No.3 Shangyuancun Haidian District, Beijing 100044, PR China.

<sup>b</sup>Laboratory of Controllable Preparation and Application of Nanomaterials, Center for Micro/nanomaterials and Technology, Key Laboratory of Photochemical Conversion and Optoelectronic Materials, Technical Institute of Physics and Chemistry, Chinese Academy of Sciences, Beijing 100190, PR China.

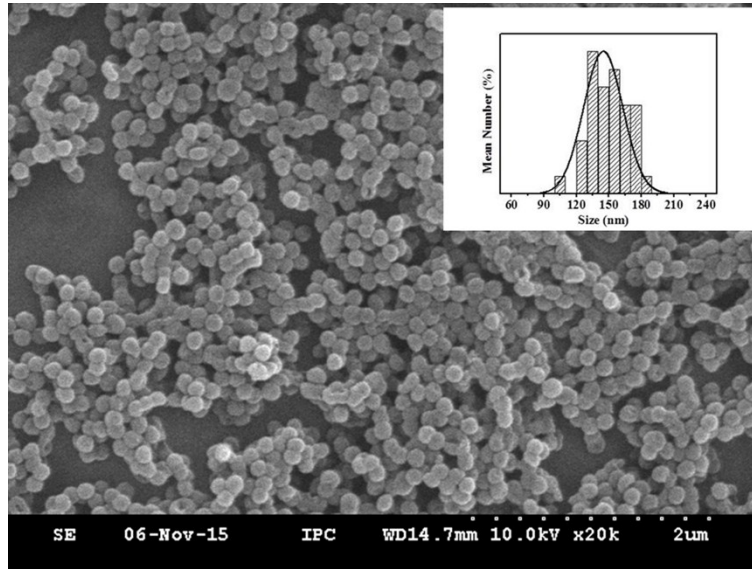


Fig. S1 SEM images of IL-PDA nanoparticles.

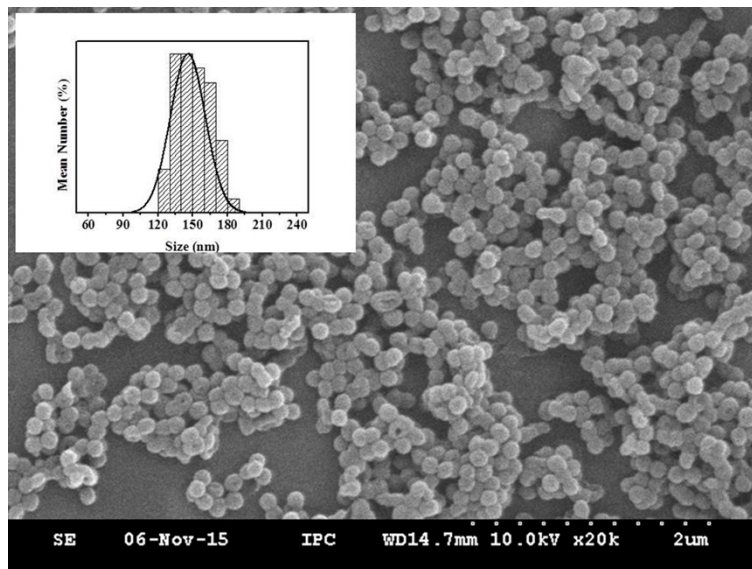


Fig. S2 SEM images of IL-PDA-DOX nanocomposites.

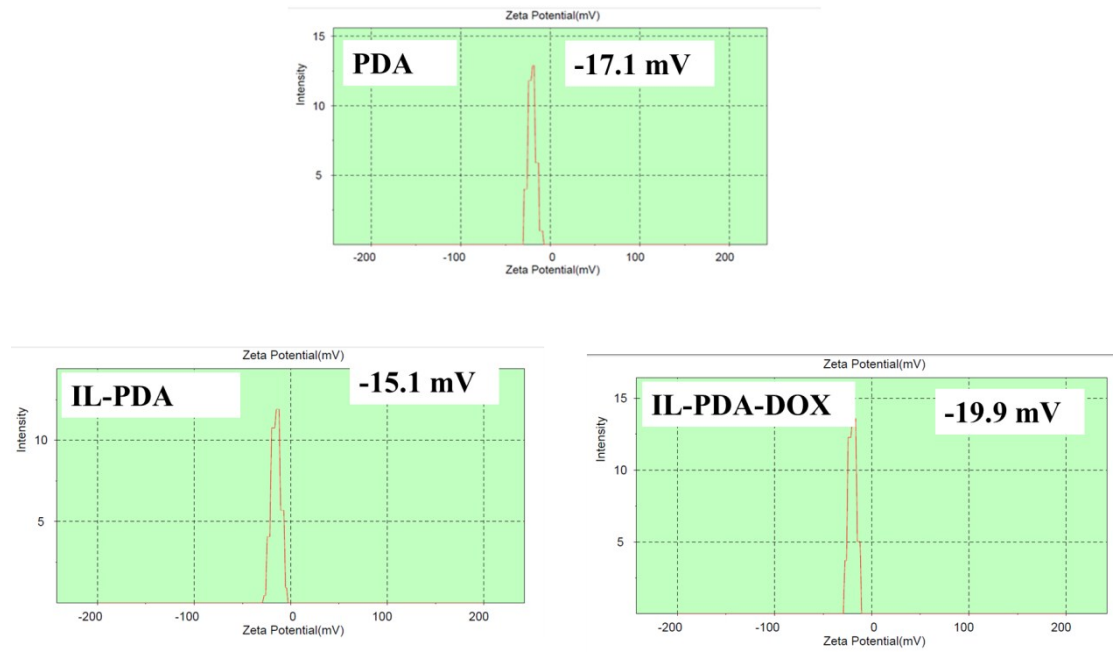


Fig. S3 Zeta potentials of the as-synthesized PDA, IL-PDA and IL-PDA-DOX.

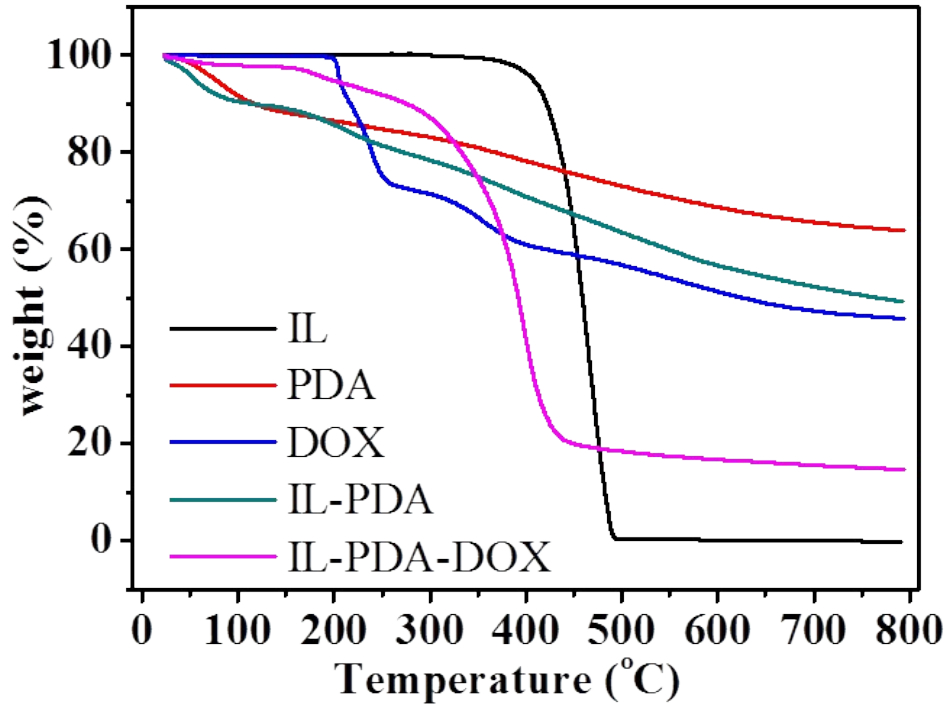


Fig. S4 TGA curves of IL-PDA-DOX nanocomposites, IL-PDA, DOX, PDA nanoparticles and IL.

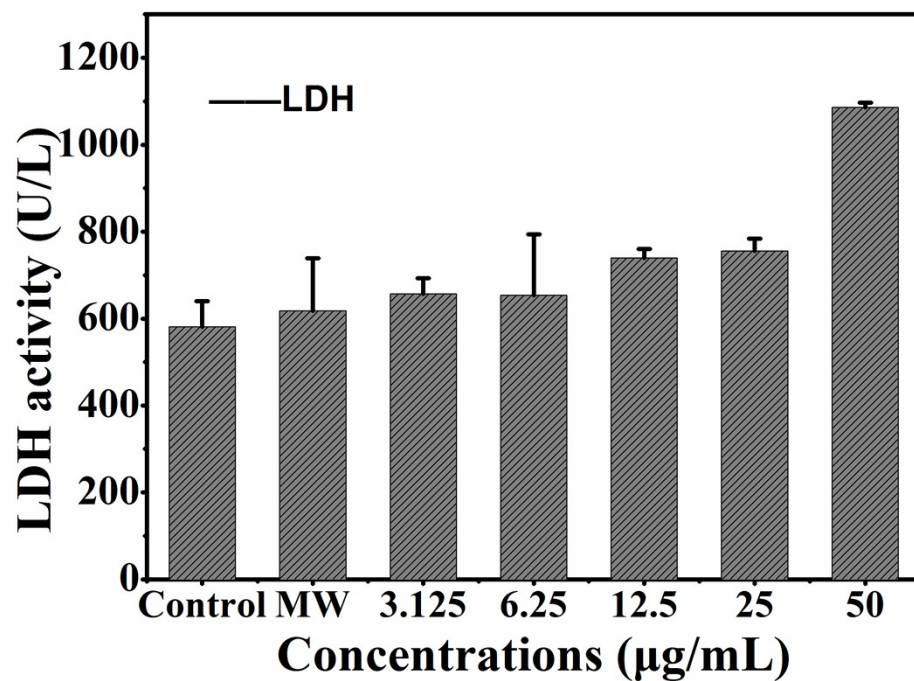


Fig. S5 Evaluation of the influence to cells for IL-PDA-DOX under microwave irradiation by LDH assay.

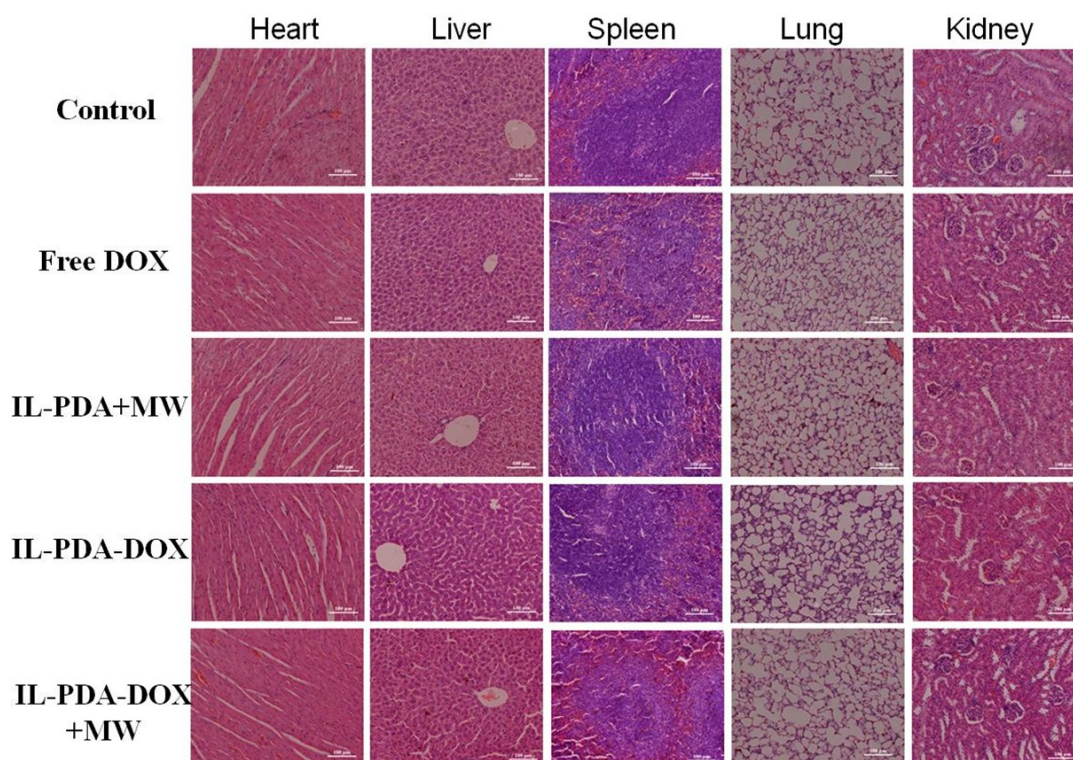


Fig. S6 Representative H&E staining images of organs (heart, liver, spleen, lung and kidney). (Scale bar: 100  $\mu\text{m}$ ).

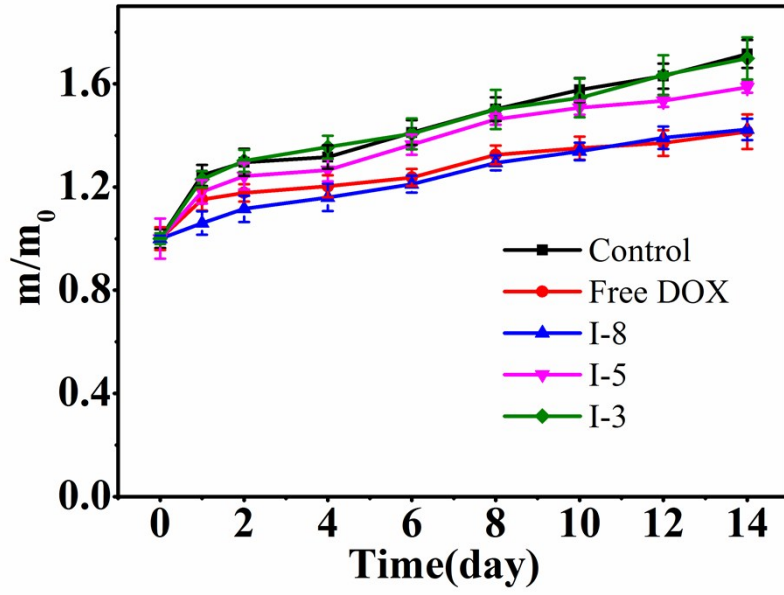


Fig. S7 Relative mass change of mean body weights in each group.

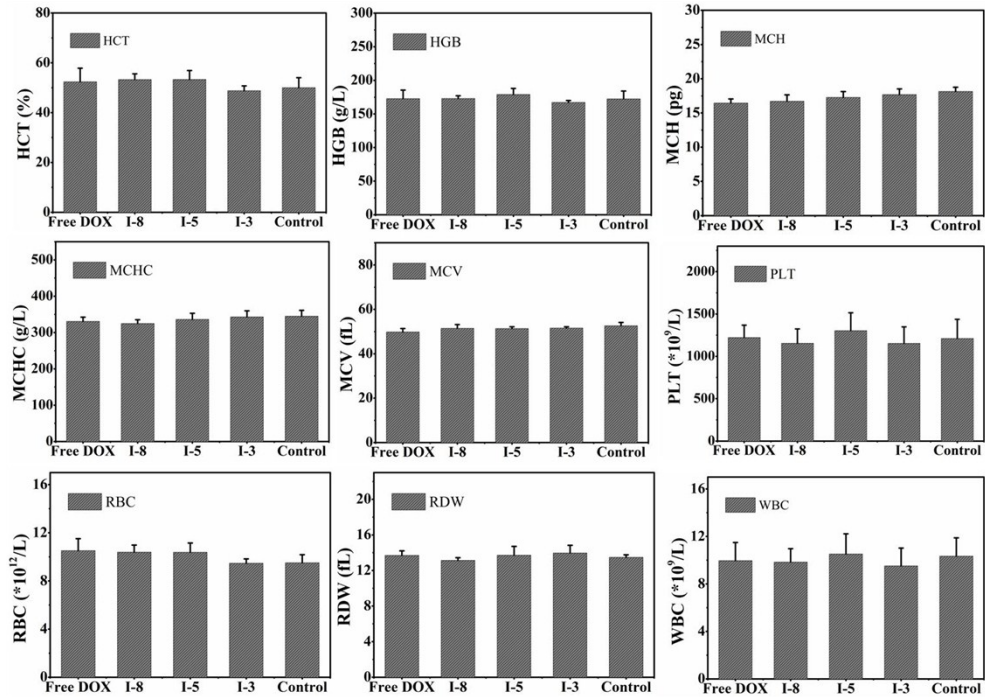


Fig. S8 Routine blood counts of ICR mice in different groups.