

## Enhanced thermopower in Rock-salt SnTe - CdTe from Band Convergence

Jun He<sup>a,b</sup>, Jingtao Xu<sup>\*b</sup>, Guoqiang Liu<sup>b</sup>, Hezhu Shao<sup>b</sup>, Xiaojian Tan<sup>b</sup>, Zhu Liu<sup>b</sup>, Jiaqiang Xu<sup>†a</sup>, Haochuan Jiang<sup>b</sup> and Jun Jiang<sup>b</sup>

<sup>a</sup> NEST Lab, Department of Chemistry, College of Sciences, Shanghai University, Shanghai 200444, China

<sup>b</sup> Ningbo Institute of Materials Technology and Engineering, Chinese Academy of Sciences, Ningbo 315201, China

Table S1. Room temperature densities ( $\rho$ ,  $g/cm^3$ ) for the SnCd<sub>x</sub>Te ( $x = 0 \sim 15\%$ ) samples investigated in this study.

$x$	0	0.01	0.03	0.05	0.07	0.09	0.12	0.15
$\rho$	6.51	6.43	6.44	6.42	6.32	6.42	6.43	6.41

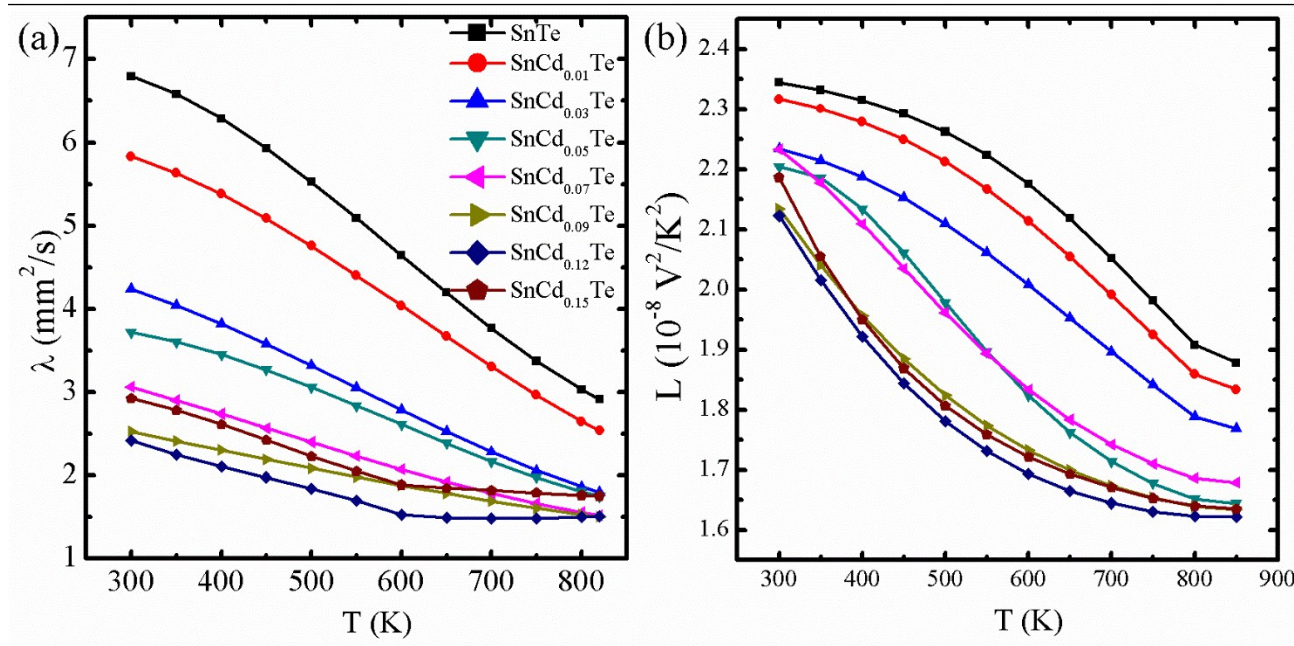


Fig S1. (a) Thermal diffusivity  $\lambda$  and (b) Lorenz number  $L$  as a function of temperature for SnCd<sub>x</sub>Te.

Table S2 the EDS results of the SnCd<sub>x</sub>Te samples in this work.

$x$	Sn atom %	Te atom %	Cd atom %
0.01	51.76	47.72	0.52
0.03	48.92	48.49	2.58
0.05	48.73	48.05	3.22
0.07	47.97	48.30	3.73

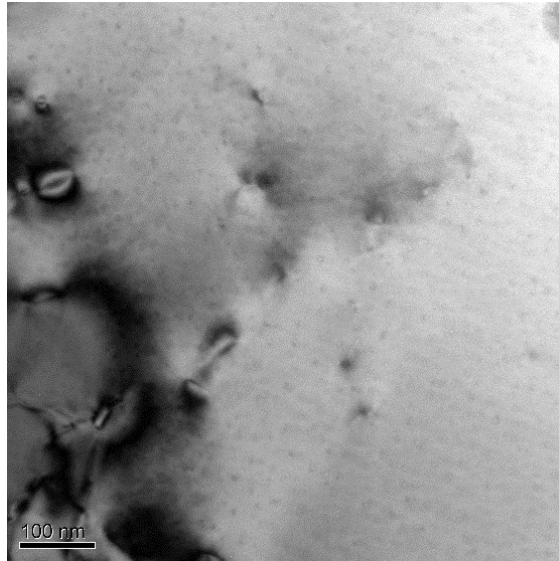


Fig S2. The TEM image for  $\text{SnCd}_{0.12}\text{Te}$ . Some dislocations are observed, and no second phase is found.

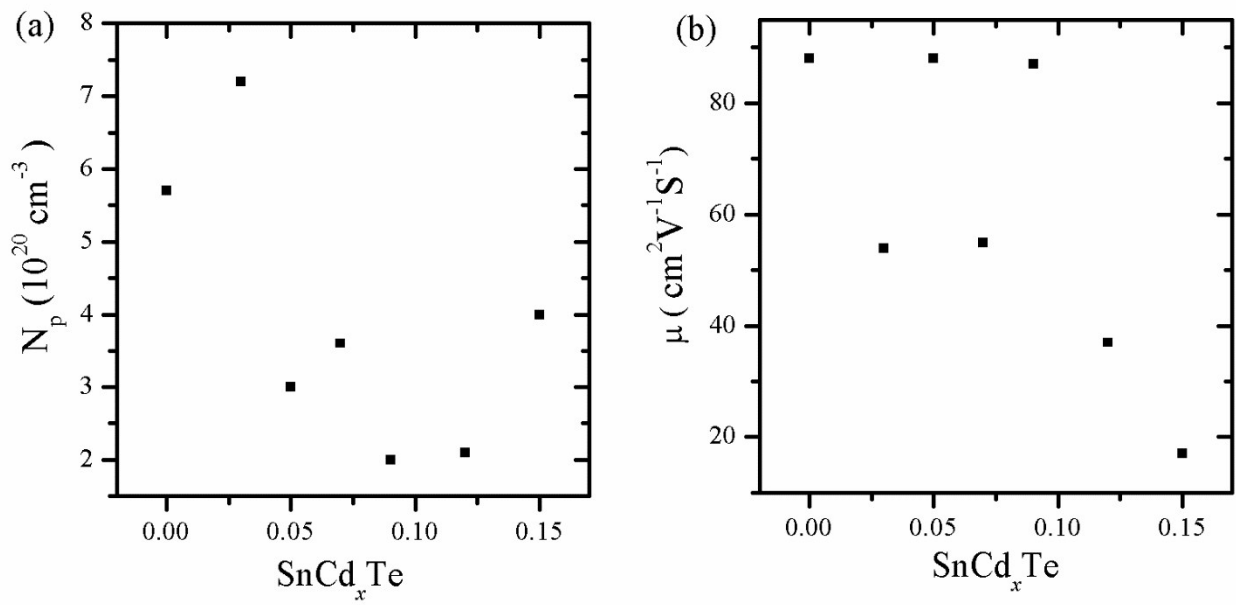


Fig S3. (a) Carrier concentration and (b) carrier mobility plot as a function of  $x$  at room temperature.