

## SUPPORTING INFORMATION

### **Carboxymethylcellulose films containing chlorhexidine-zirconium phosphate nanoparticles: antibiofilm activity and cytotoxicity**

Anna Donnadio,<sup>a\*</sup> Valeria Ambrogi,<sup>a\*</sup> Donatella Pietrella,<sup>b</sup> Monica Pica,<sup>a</sup> Giulia Sorrentino,<sup>a</sup> Mario Casciola<sup>c</sup>

<sup>a</sup> Dipartimento di Scienze Farmaceutiche, Via del Liceo 1, University of Perugia, 06123, Perugia, Italy

<sup>b</sup> Dipartimento di Scienze Farmaceutiche, Microbiology and Immunology Laboratory, Via del Giochetto, University of Perugia, 06122 Perugia, Italy

<sup>c</sup> Dipartimento di Chimica, Biologia, Biotecnologia, Via Elce di Sotto, University of Perugia, 06123 Perugia, Italy

\*Corresponding authors:

e-mail: [anna.donnadio@unipg.it](mailto:anna.donnadio@unipg.it)

[valeria.ambrogi@unipg.it](mailto:valeria.ambrogi@unipg.it);

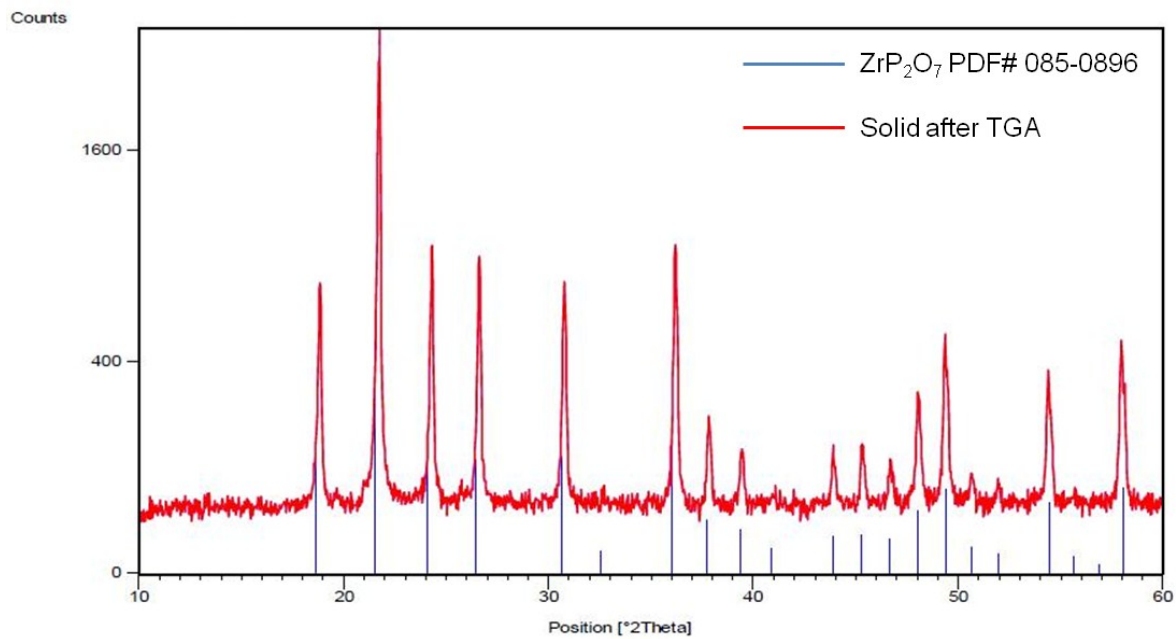


Figure S1. XRPD patterns of the solid recovered after TGA and of the cubic phase of  $\text{ZrP}_2\text{O}_7$  (PDF# 085-0896).

**Table S1.** Moisture uptake (expressed as wt%) of SCMC and SCMC based composite films after 48 h.

Film	Moisture uptake
SCMC	30.0
SCMC/CLX-2.5%	32.7
SCMC/ZrP-5%	30.3
SCMC/ZrP(CLX)-1%	30.8
SCMC/ZrP(CLX)-2.5%	31.7
SCMC/ZrP(CLX)-5%	30.7

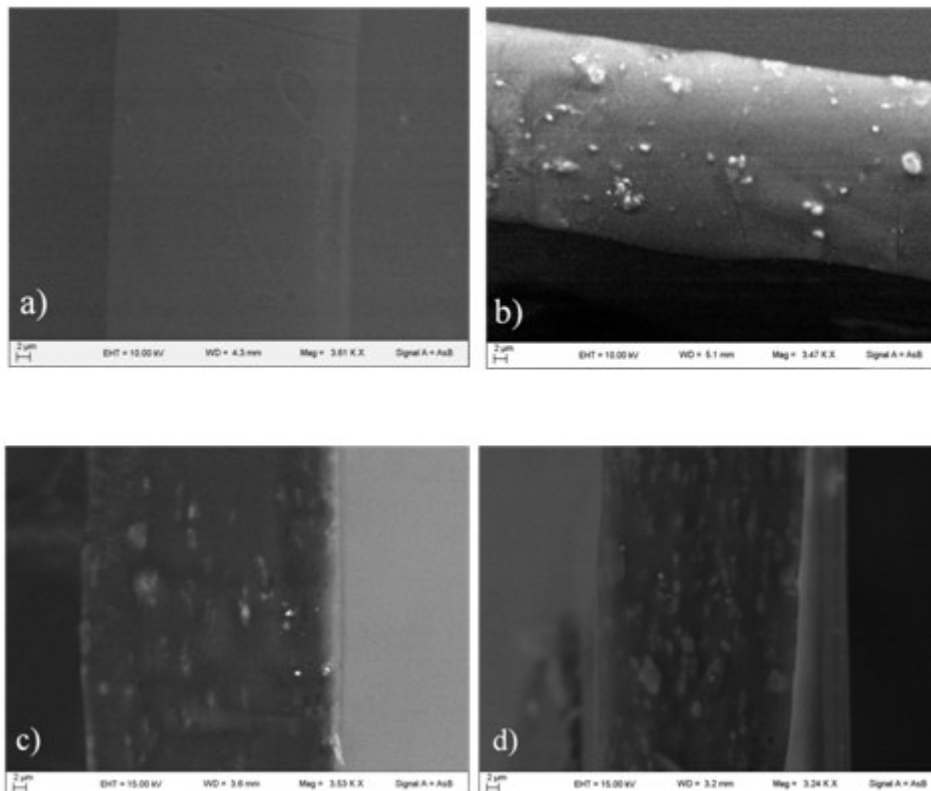


Figure. S2 SEM images of the fracture surface for: SCMC a), SCMC/ZrP(CLX)-1%, b) SCMC/ZrP(CLX)- 2.5% c), SCMC/ZrP(CLX)-5% d).