

Electronic Supplementary Information

**A Novel $\text{Li}_2\text{Mn}_{2.9}\text{Ni}_{0.9}\text{Co}_{0.2}\text{O}_8$ Spinel Composite
Interweaved with Carbon Nanotube Architecture as
Lithium Battery Cathode**

P. Remith and N. Kalaiselvi *

Electrochemical Power Sources Division
CSIR- Central Electrochemical Research Institute
Karaikudi- 630 006, India
E-mail: kalaiselvicecri@gmail.com

Figures

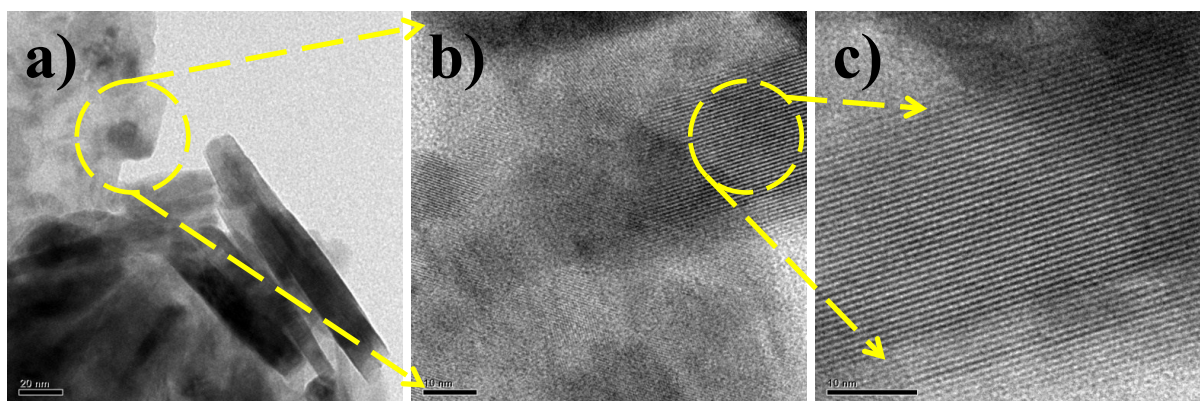


Figure S1. HRTEM images showing the lattice fringes of $\text{Li}_2\text{Mn}_{2.9}\text{Ni}_{0.9}\text{Co}_{0.2}\text{O}_8$

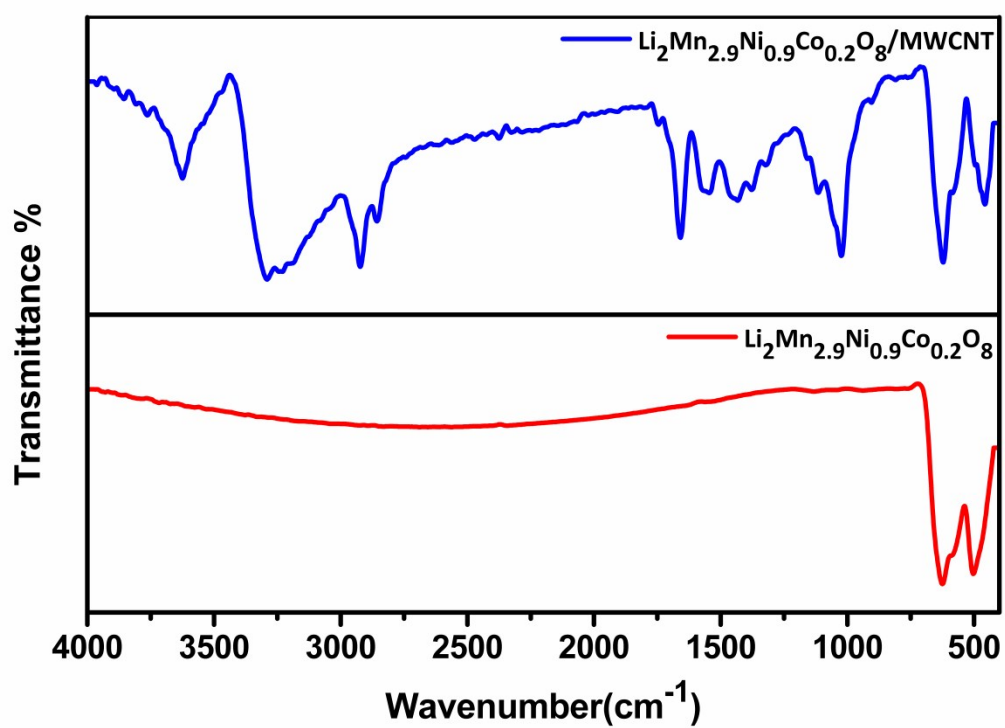


Figure S2. FTIR spectra of pristine $\text{Li}_2\text{Mn}_{2.9}\text{Ni}_{0.9}\text{Co}_{0.2}\text{O}_8$ and the corresponding $\text{Li}_2\text{Mn}_{2.9}\text{Ni}_{0.9}\text{Co}_{0.2}\text{O}_8/\text{MWCNT}$ composite

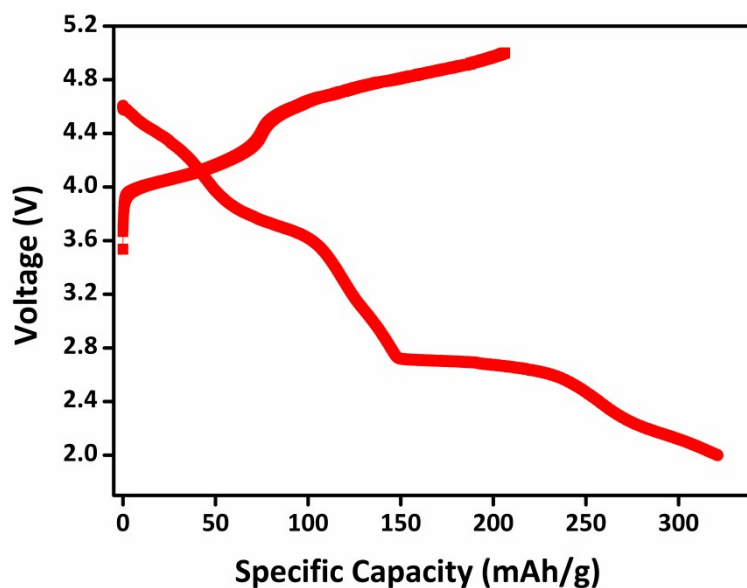


Figure S3. First cycle charge discharge voltage profile of $\text{Li}_2\text{Mn}_{2.9}\text{Ni}_{0.9}\text{Co}_{0.2}\text{O}_8/\text{MWCNT}$ composite

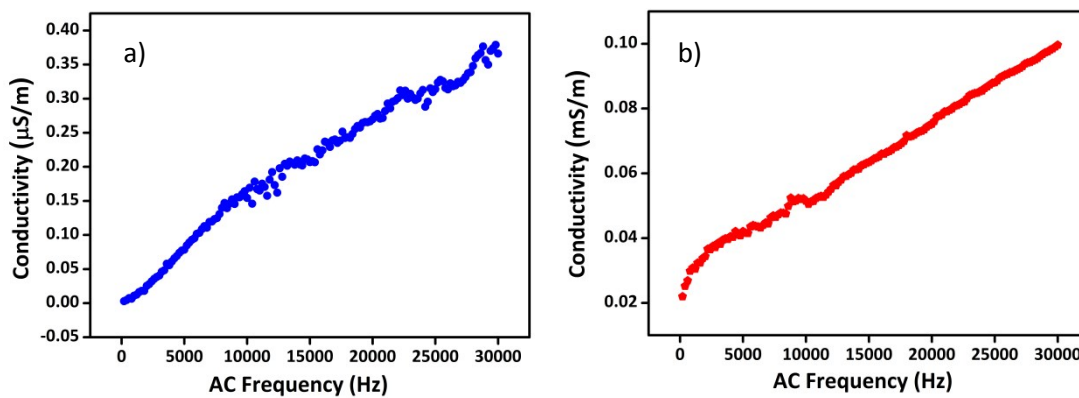


Figure S4. Room temperature conductivity versus AC frequency of a) pristine $\text{Li}_2\text{Mn}_{2.9}\text{Ni}_{0.9}\text{Co}_{0.2}\text{O}_8$ and b) $\text{Li}_2\text{Mn}_{2.9}\text{Ni}_{0.9}\text{Co}_{0.2}\text{O}_8/\text{MWCNT}$ composite