

Supplementary Information

Compound	λ_{ex} (nm)	λ_{em} (nm)	τ (nS)	χ^2
1	353	492	0.3244	1.004603

Table S1. Details of Life time study of Complex 1.

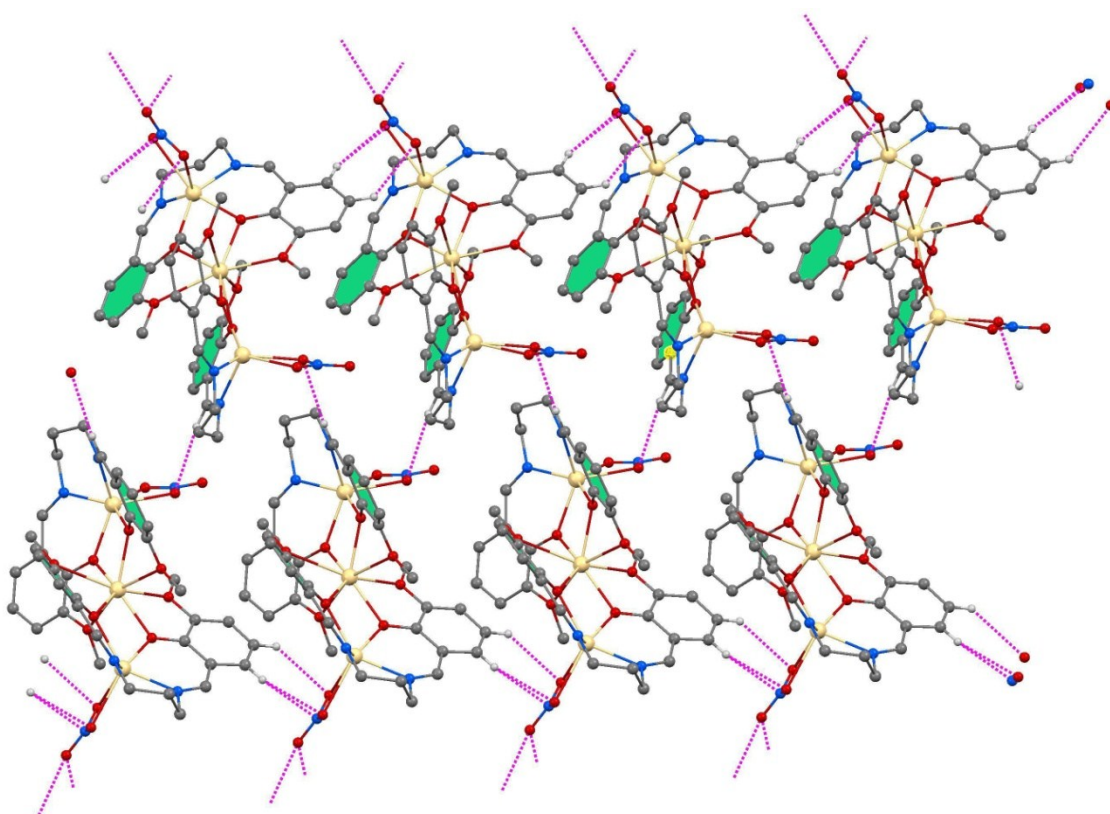


Fig. S1. 2D supramolecular sheet of complex 1 showing CH... π and π -hole interactions. Hydrogen atoms of least interest are omitted for clarity.

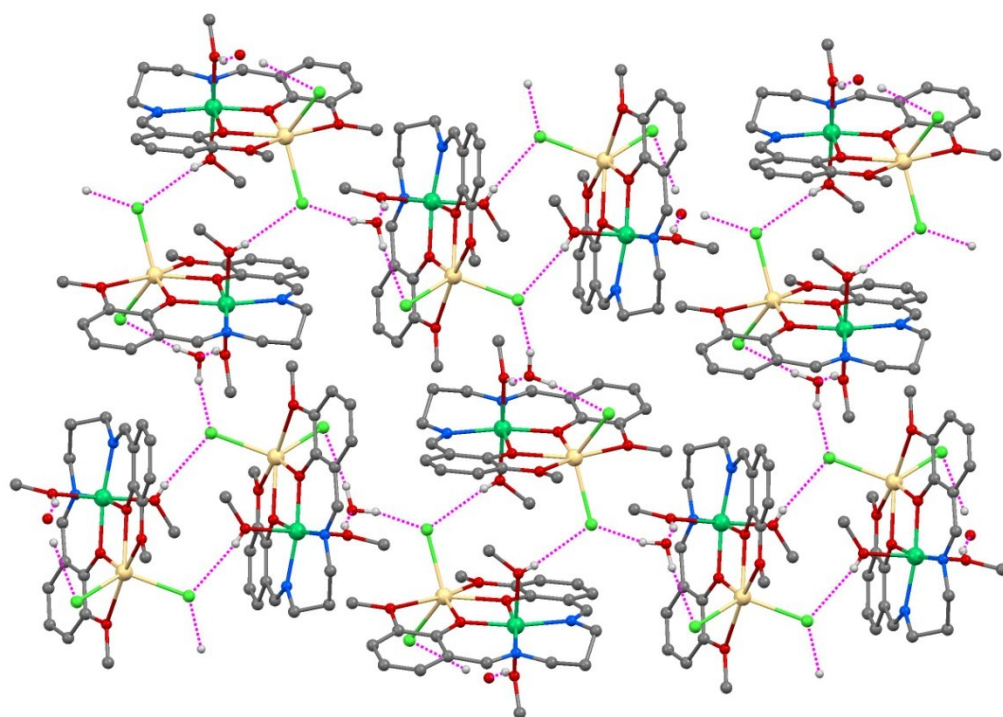


Fig. S2. 2D supramolecular sheet of complex **2** propagating along the *bc* plane showing CH... π and H-bonding interaction. Hydrogen atoms of least interest are omitted for clarity.

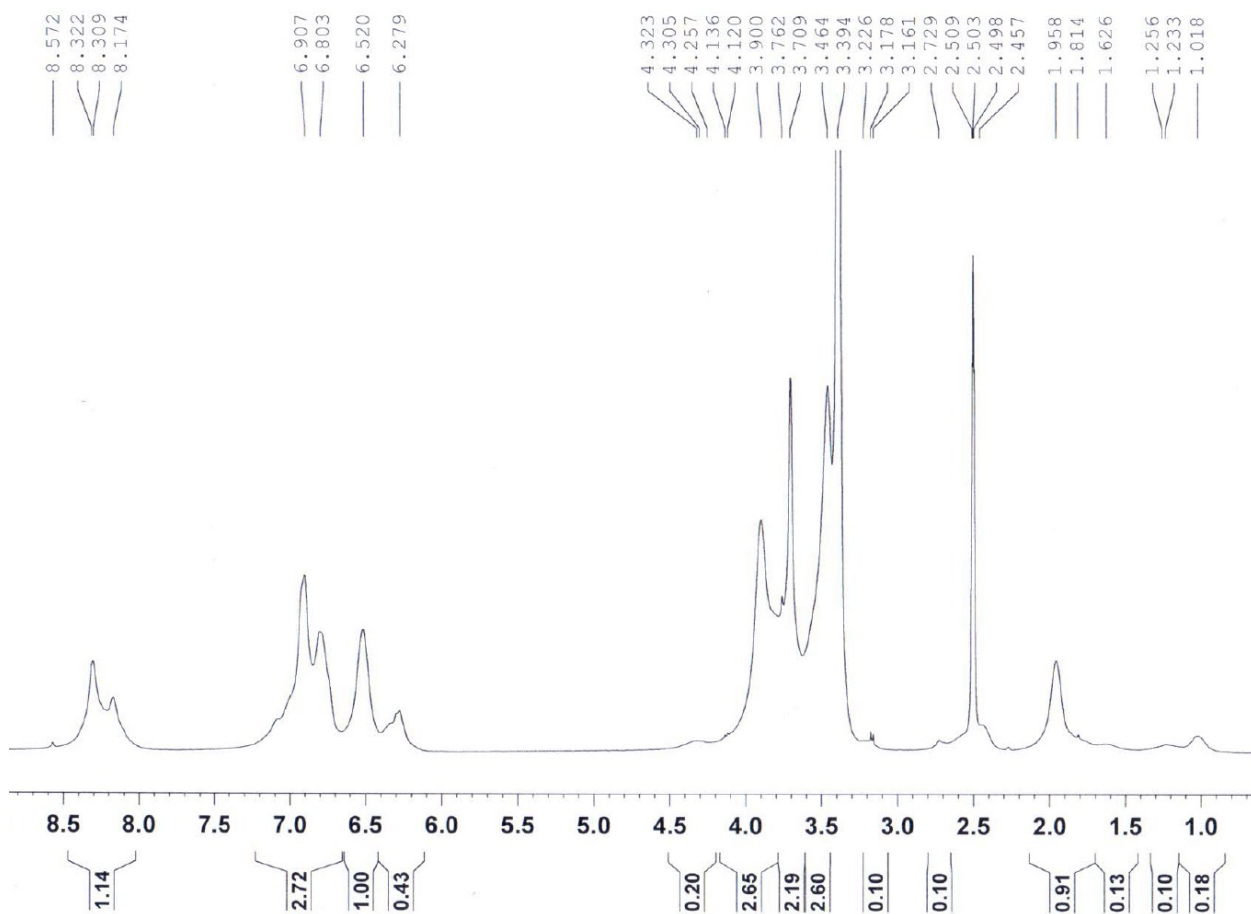


Fig. S3. ¹H NMR spectrum of complex 1 in DMSO-d₆.

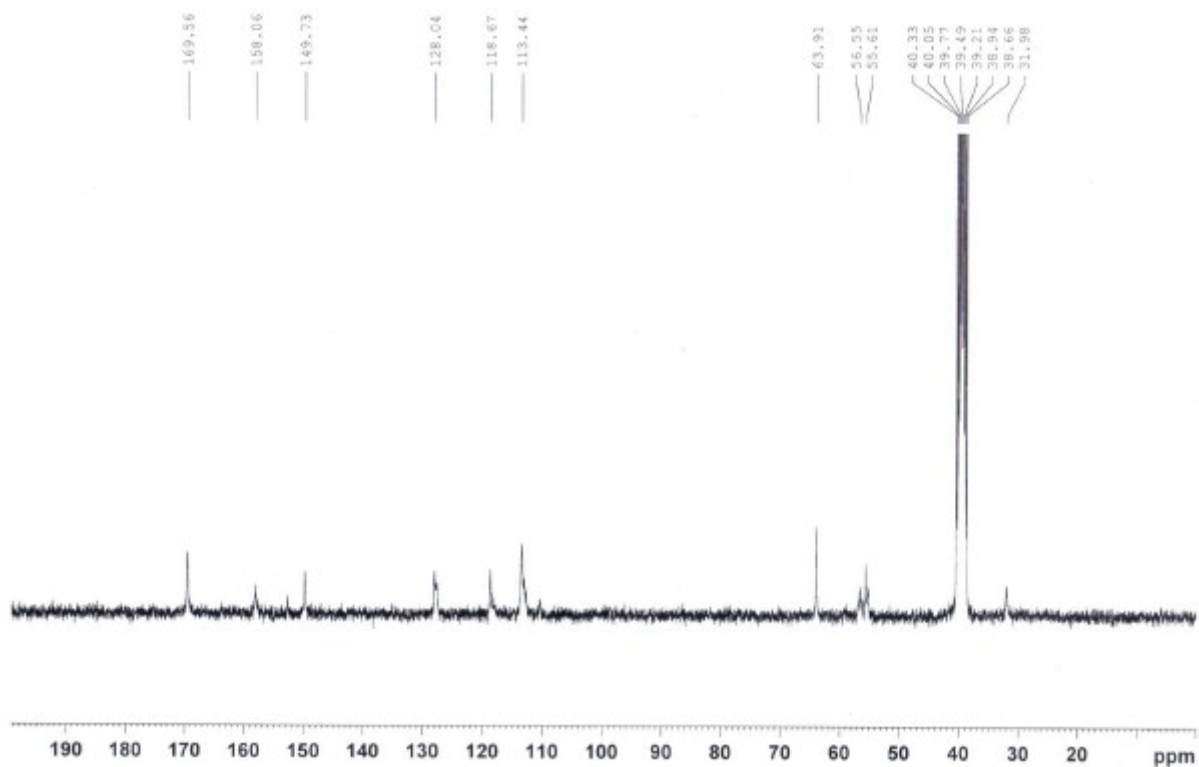


Fig. S4. ^{13}C NMR spectrum of complex **1** in DMSO-d_6 .

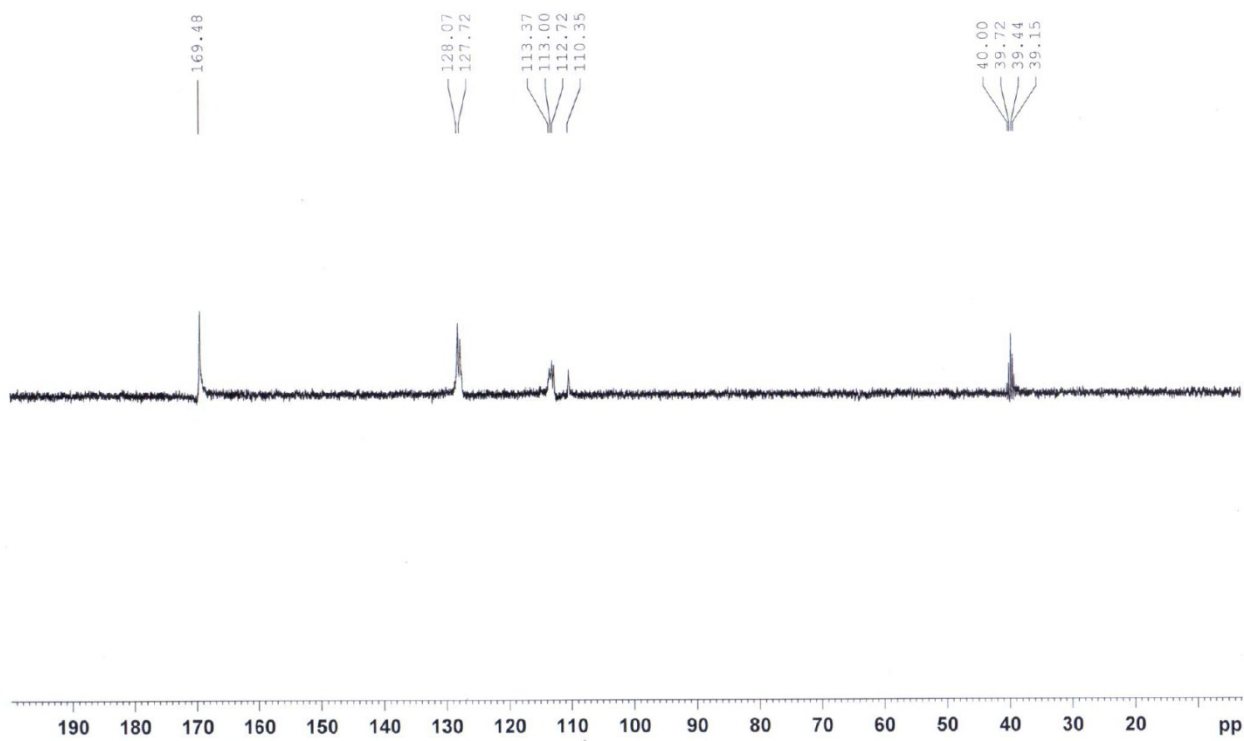


Fig. S5. ^{13}C NMR-DEPT90 spectrum of complex **1** in DMSO-d_6 .

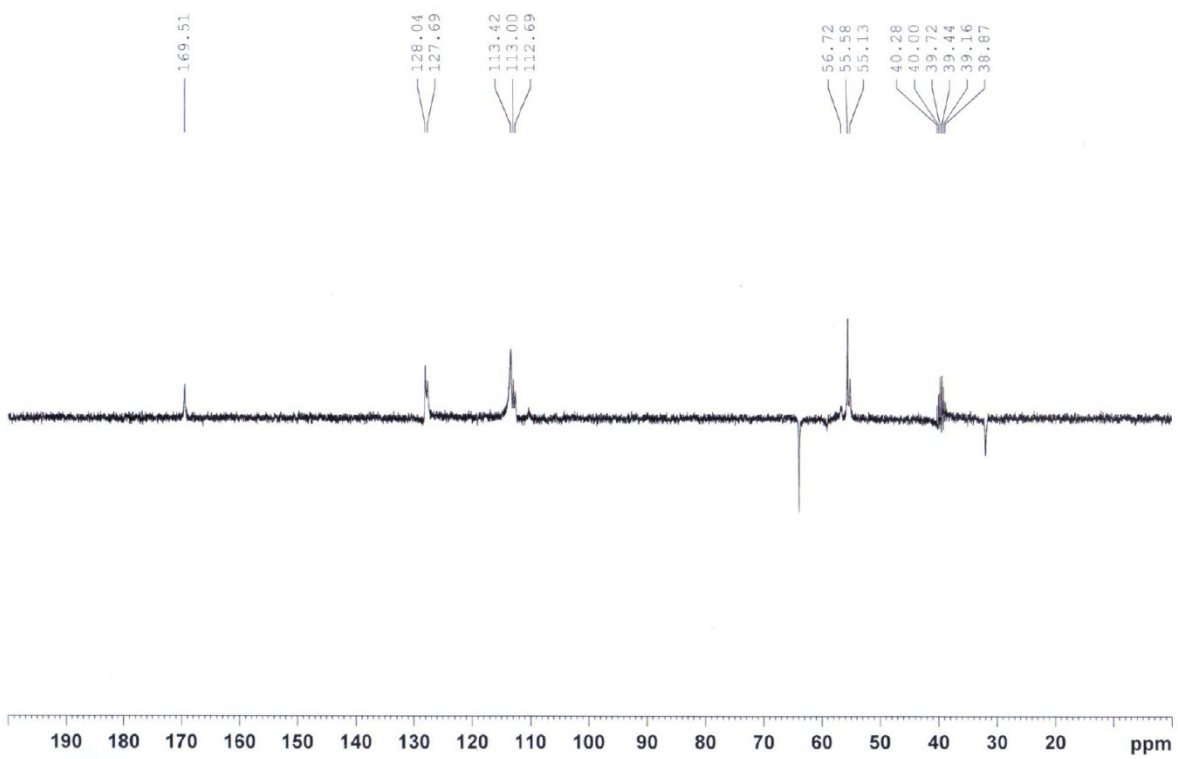


Fig. S6. ^{13}C NMR-DEPT135 spectrum of complex **1** in DMSO-d_6 .

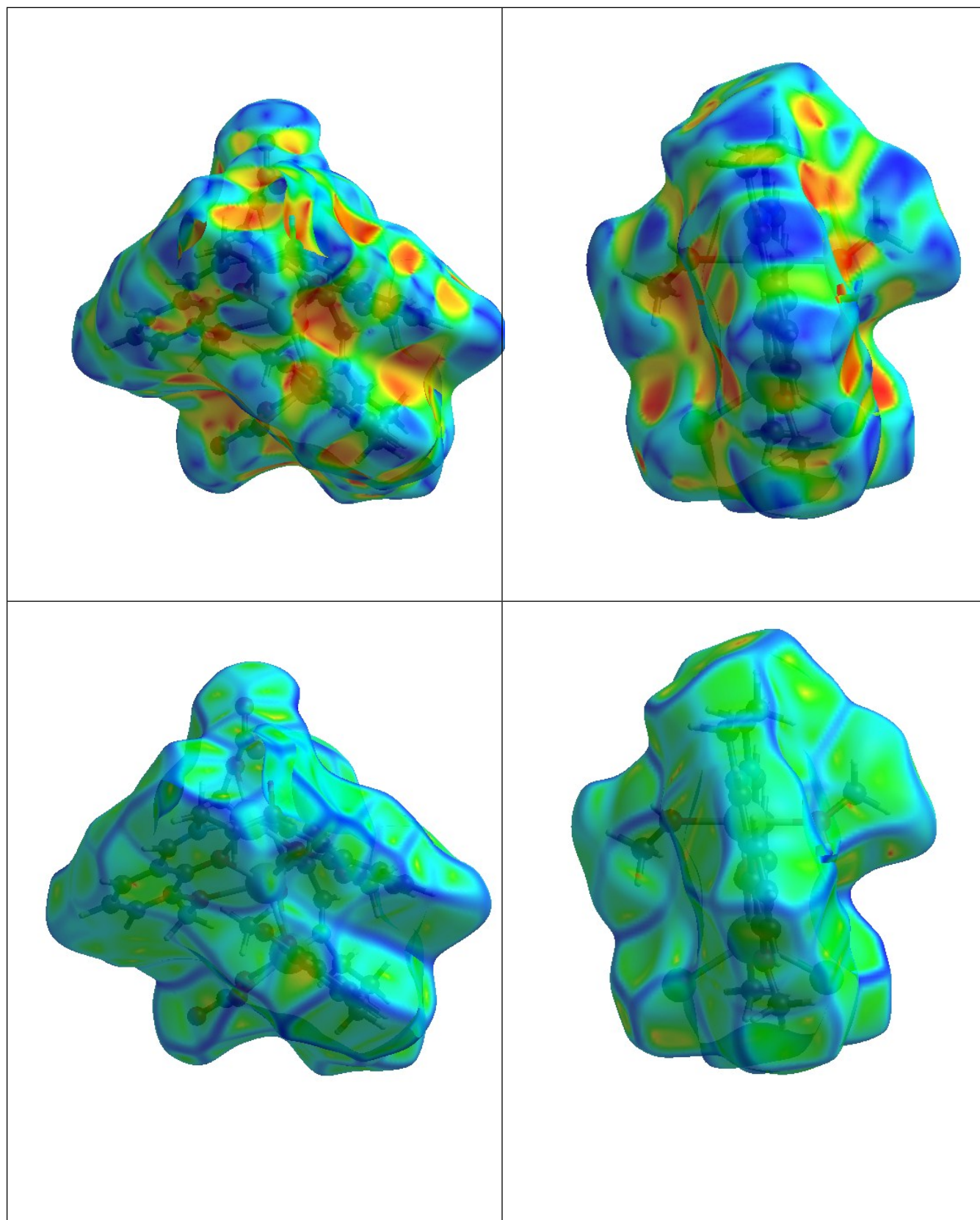


Fig. S7. Hirshfeld Surface mapped over Shape Index (top) and Curvedness(bottom) for complexes **1** (left)and **2**(right).

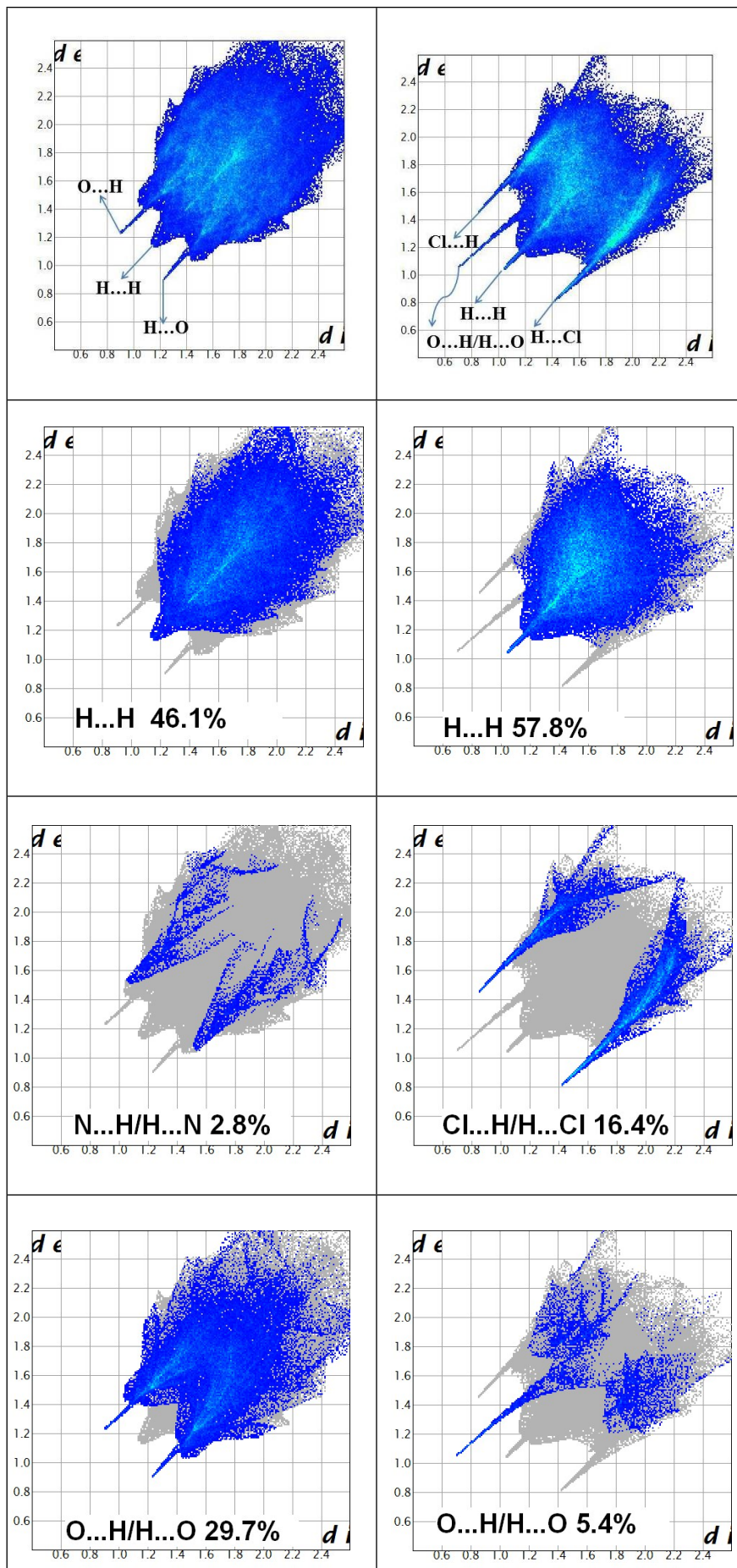


Fig. S8. Fingerprint plot of Complex **1** (Left) and **2** (Right) showing total interactions (Top), only X...H/H...X contacts (middle) and O...H/H...O contacts (bottom) respectively.