

## Electronic supplementary information

**Journal Name: RSC Advances**

### **A novel sensitive and selective electrochemical sensor based on molecularly imprinted polymer at nanoporous gold leaf modified electrode for warfarin sodium determination**

Yingchun Li <sup>a,b\*</sup>, Lu Zhang <sup>a</sup>, Jiang Liu <sup>a</sup>, Shu-Feng Zhou <sup>d</sup>, Khalid Abdullah Al-Ghanim <sup>e</sup>, Shahid Mahboob <sup>e</sup>, Bang-Ce Ye <sup>b</sup>, Xueji Zhang <sup>c\*</sup>

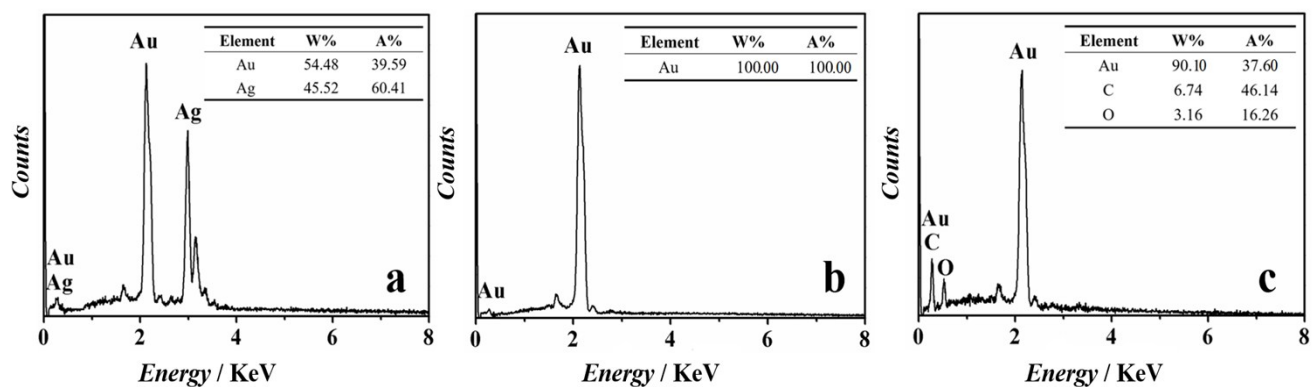
a. School of Pharmacy, Shihezi University, Shihezi 832000, China. E-mail: yingchunli@shzu.edu.cn, Tel/Fax: +86-993-2057005.

b. Key Laboratory for Green Processing of Chemical Engineering of Xinjiang Bingtuan, School of Chemistry and Chemical Engineering, Shihezi University, Shihezi 832003, China.

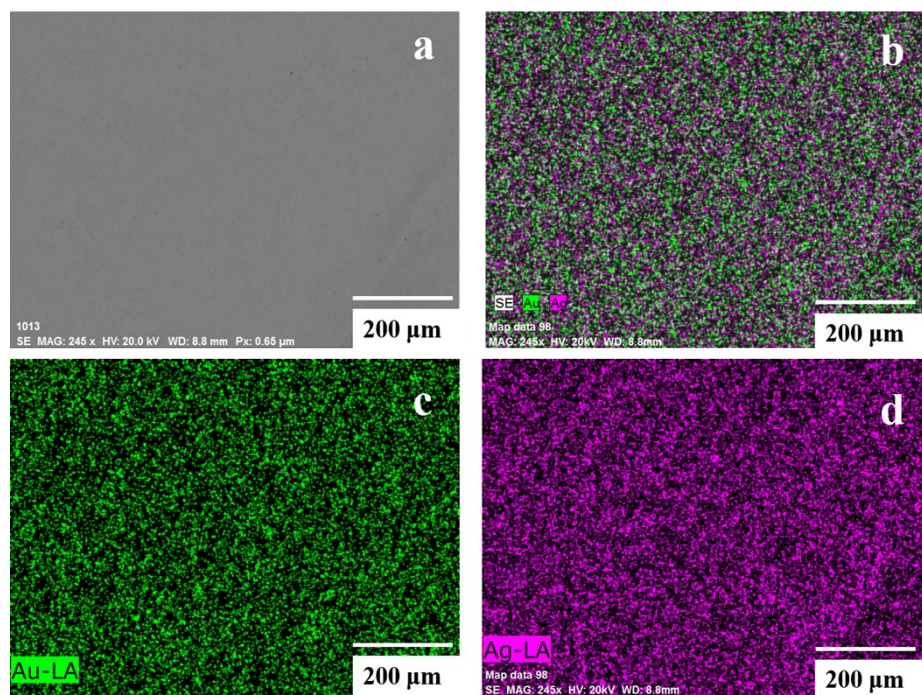
c. Research Center for Bioengineering and Sensing Technology, University of Science and Technology Beijing, Beijing 100083, China. E-mail: zhangxueji@ustb.edu.cn, Tel/Fax: +86-10-62333910.

d. Department of Pharmaceutical Science, College of Pharmacy, University of South Florida, Tampa, FL 33612, USA.

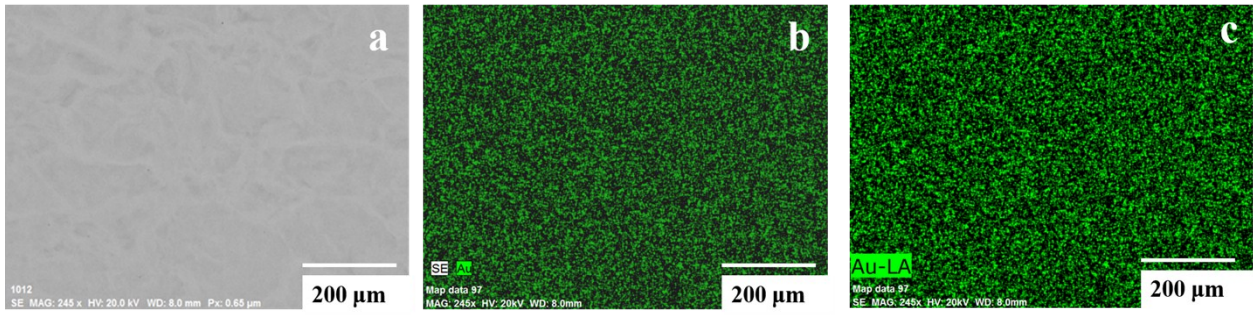
e. Department of Zoology, College of Science, King Saud University, P.O. Box 2455, Riyadh-11451, Saudi Arabia.



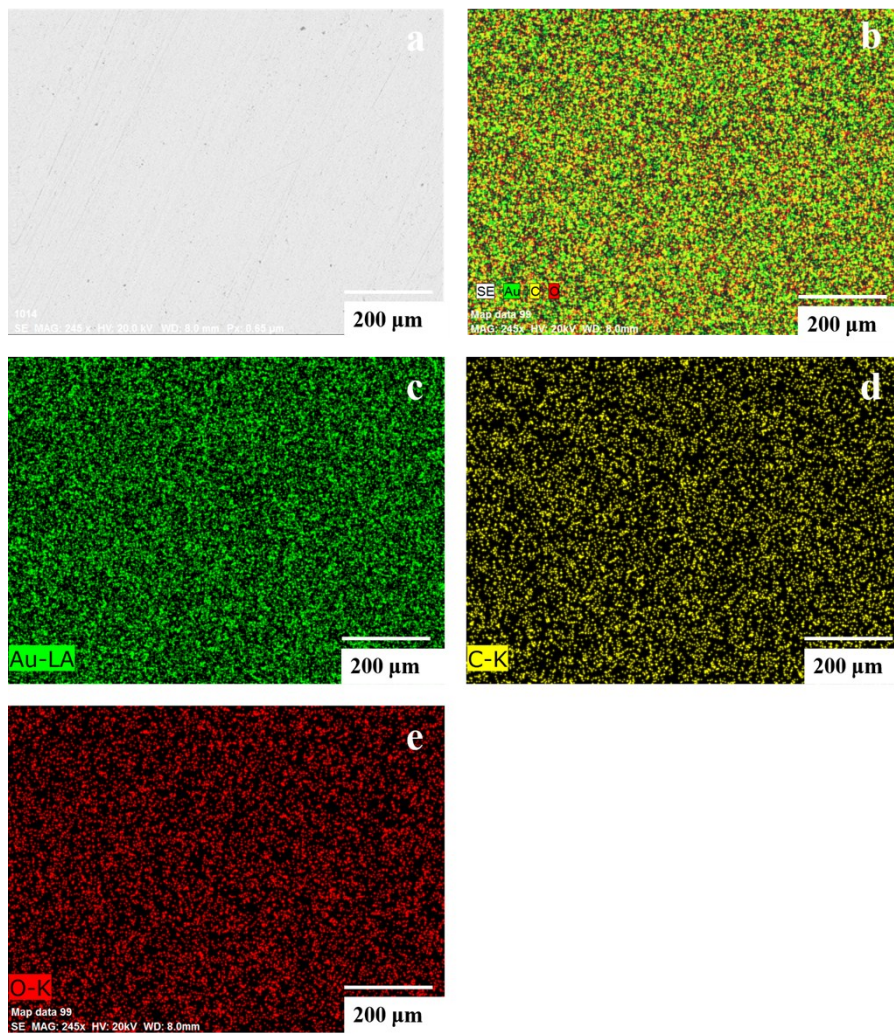
**Fig. S1** EDS spectra of (a) Ag/Au alloy leaf, (b) nanoporous gold leaf (NPGL), (C) MIP/NPGL after extraction of template



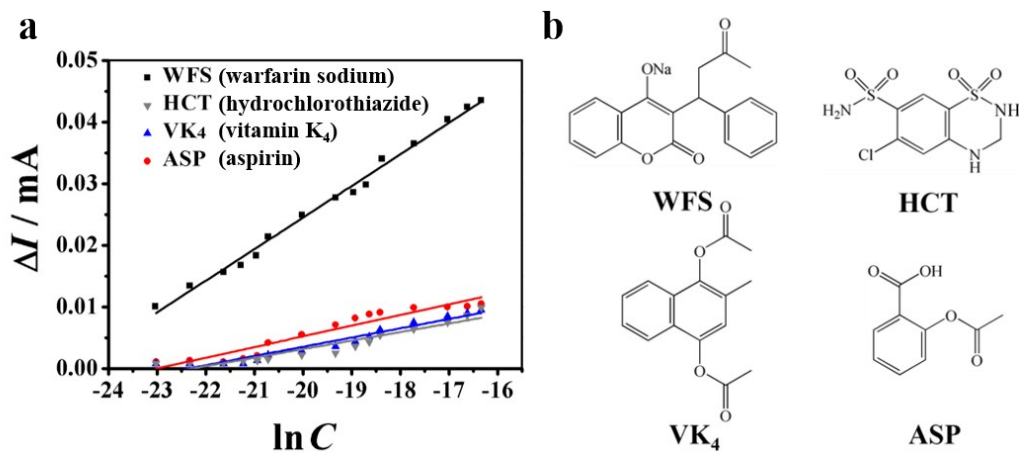
**Fig. S2** Elemental mapping of Ag/Au alloy leaves: (a) SEM image, (b) all element mapping, (c) Au mapping and (d) Ag mapping



**Fig. S3** Elemental mapping of NPGL: (a) SEM image, (b) all element mapping and (c) Au mapping



**Fig. S4** Elemental mapping of MIP-NPGL: (a) SEM image, (b) all element mapping, (c) Au mapping, (d) C mapping and (e) O mapping



**Fig. S5** (a) Calibration curves correlating current shift ( $\Delta I$ ) with the logarithm of concentration of WFS and its structural analogues; (b) chemical structures of WFS and its structural analogues.