

Supplementary information for:

Evaluation of kaolin-floc characteristics during coagulation process: A case study with a continuous flow device

Zhenbei. Wang, Jun. Nan*, Meng. Yao, Pengfei. Ren, Yueming. Yang

Skate Key Laboratory of Urban Water Resource and Environment, School of Municipal and Environmental Engineering, Harbin Institute of Technology, Harbin 150090, PR China

*Corresponding author. Tel.: +86 451 86084169; fax: +86 451 86283001.

E-mail address: nanjun119@163.com (J. Nan)

This document consists of 2 pages, 1 table and 1 figure.

TABLES

Table S1 Hydrodynamic conditions for all experiments mentioned in 3.2 and 3.3.

Experiment number	First stage		Second stage		Third stage	
	N(rpm)	G(s-1)	N(rpm)	G(s-1)	N(rpm)	G(s-1)
1	180	71	140	48	90	25
2	180	71	140	48	70	17
3	180	71	120	38	90	25
4	180	71	120	38	70	17
5	160	59	140	48	90	25
6	160	59	140	48	70	17
7	160	59	120	38	90	25
8	160	59	120	38	70	17

FIGURES

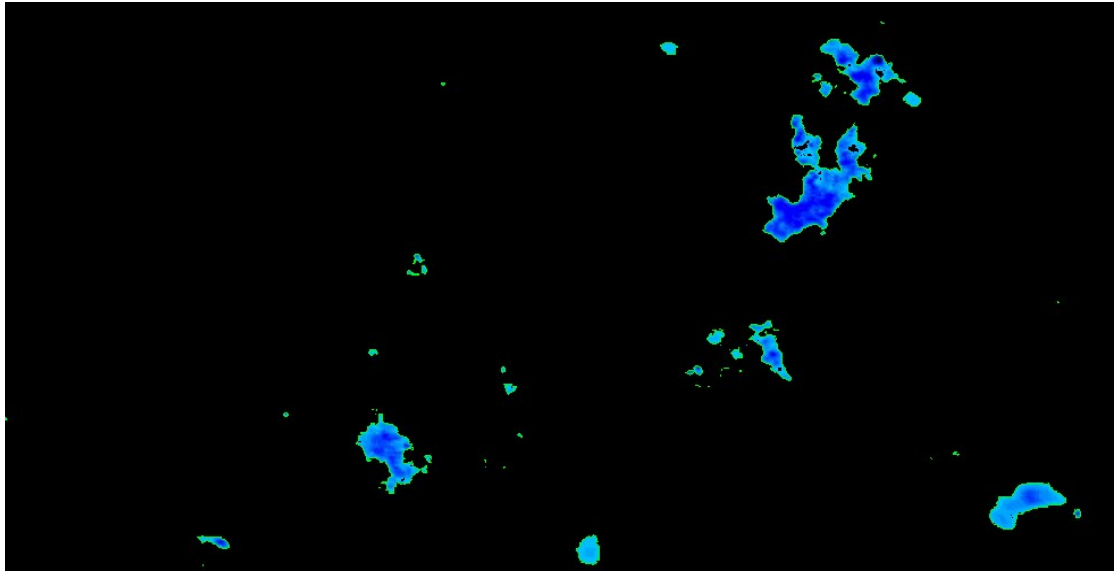


Fig. S1. Example of the PIV images of flocs after thresholding under shear rate combination 59 – 48 – 17 s⁻¹ (at 20min)