

## Electronic Supplementary Information

### A novel fluorescein-based colorimetric probe for Cu<sup>2+</sup> detection

Xin Wu<sup>a,b</sup>, Xiaojuan Gong<sup>a</sup>, Jun Ma<sup>a</sup>, Wenjuan Dong<sup>a</sup>, Jianbin Chao<sup>a</sup>, Chenzhong Li<sup>c</sup>, Li Wang<sup>a\*</sup>,  
Chuan Dong<sup>a\*</sup>

<sup>a</sup> *Institute of Environmental Science, School of Chemistry and Chemical Engineering, Shanxi University, Taiyuan 030006, P.R. China.*

<sup>b</sup> *School of Arts and Sciences, Shanxi Agricultural University, Taigu 030801, P.R. China*

<sup>c</sup> *Department of Biomedical Engineering, Florida International University, Miami, Florida 33174, USA*

Corresponding author: L. Wang, E-mail: [wangli@sxu.edu.cn](mailto:wangli@sxu.edu.cn),

Tel/Fax: +86-351-7011011.

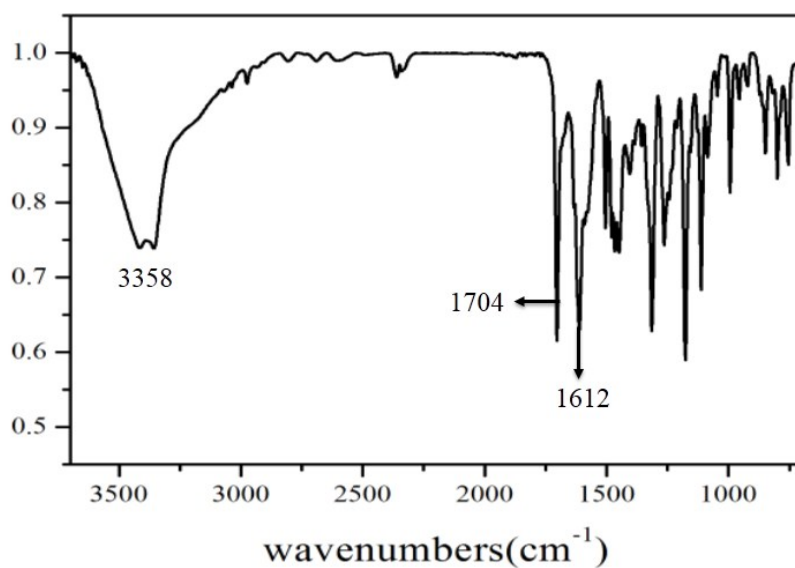
Corresponding author: C. Dong, E-mail: [dc@sxu.edu.cn](mailto:dc@sxu.edu.cn), Tel/Fax: +86-351-7011011.

**Fig. S1:** FT-IR spectra of CSFH

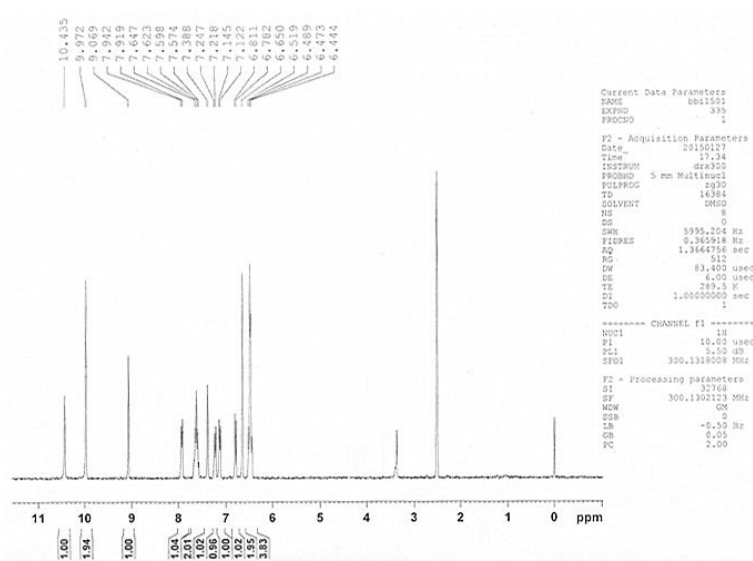
**Fig. S2:** <sup>1</sup>H NMR of CSFH

**Fig. S3:** <sup>13</sup>C NMR of CSFH

**Fig. S4:** MADLI-TOF-MS of CSFH



**Fig. S1** FT-IR spectra of CSFH in KBr disks.



**Fig. S2**  $^1\text{H}$  NMR(DMSO- $d_6$ , 300MHz, 25 $^\circ\text{C}$ ) of CSFH.

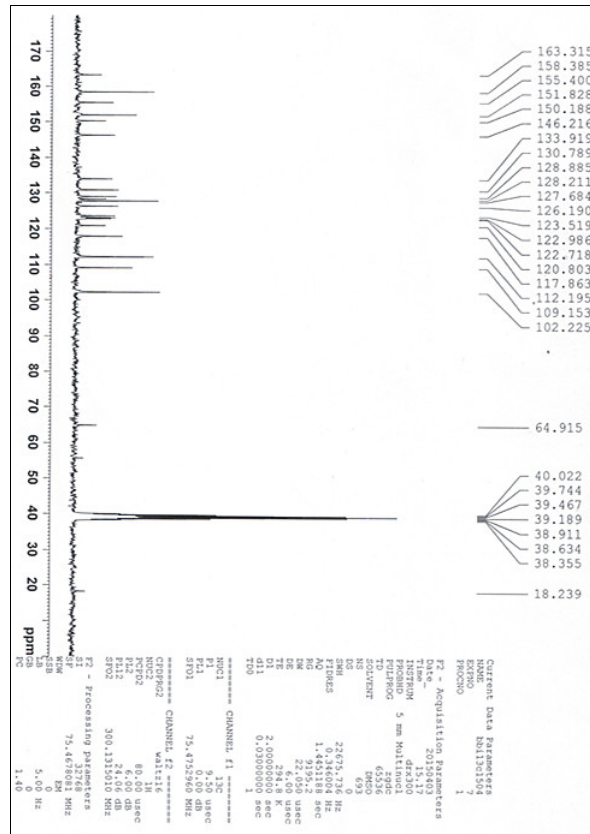


Fig. S3  $^{13}\text{C}$  NMR(DMSO- $d_6$ , 25°C, 75MHz) of CSFH.

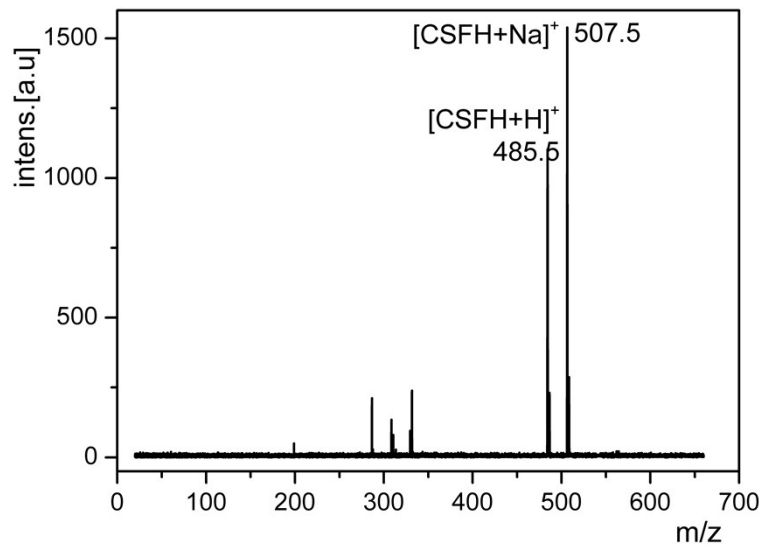


Fig. S4 MADLI-TOF-MS of CSFH.