

ELECTRONIC SUPPLEMENTARY INFORMATION

Structurally-Defined Semi-Interpenetrating Amphiphilic Polymer Networks with Tunable and Predictable Mechanical Response

Mariliz Achilleos, Fotios Mpekris, Triantafyllos Stylianopoulos* and Theodora Krasia-Christoforou*

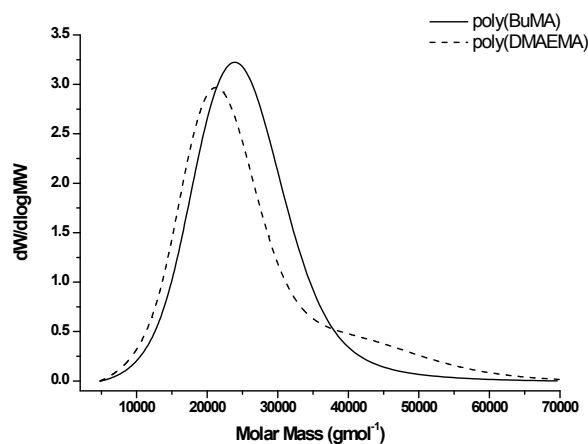


Figure S1. SEC traces of poly(DMAEMA) and poly(BuMA) linear polymers employed as precursors to the BIEE-crosslinked semi-IPN amphiphilic polymer networks.

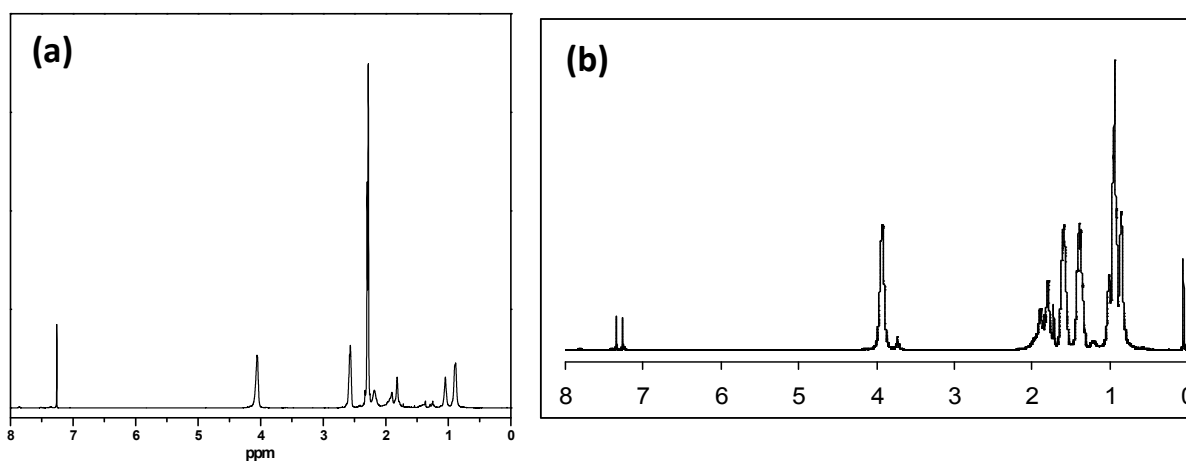


Figure S2. ¹H NMR spectra of (a) poly(DMAEMA) and (b) poly(BuMA) linear precursors to the semi-IPN amphiphilic polymer networks.