

Supporting Information

Chemical transformation of Te into new ternary phase $\text{Pb}_m\text{Cu}_n\text{Te}_{m+n}$ nanorods and their surface atom diffusion and optical properties

Qun Wang, ^{*ab} Ziming Su, ^b Mingda Lv, ^a Jianhuan Li, ^b Baoyu Sun, ^b Guangjun Zhang^{*a}

^aState Key Laboratory of Advanced Welding and Joining, ^bSchool of Chemistry and Chemical

Engineering, Harbin Institute of Technology, Harbin, 150001, China.

E-mail: wangqun5992@hit.edu.cn;

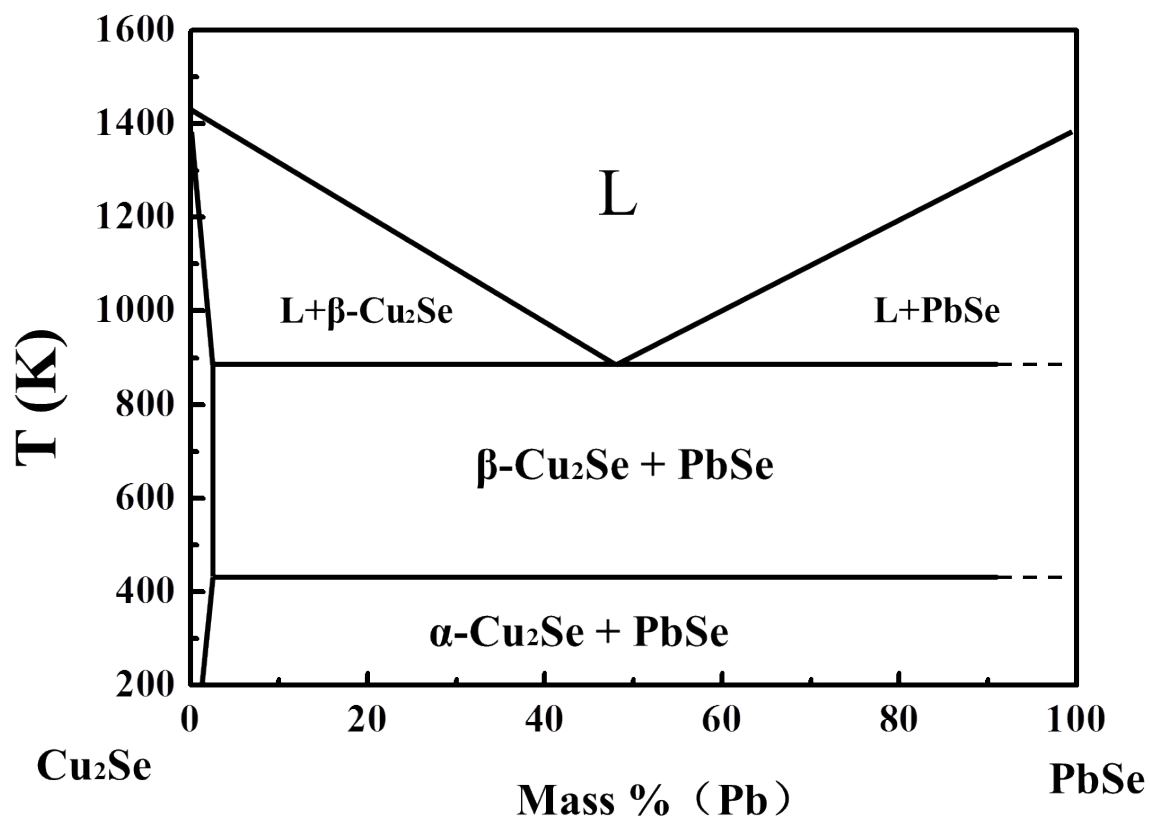


Fig. S1 Schematic representation of the phase diagram of the PbSe-Cu₂Se system.¹

Reference:

- (1) O. V. Marchuk, L. D. Gulay, V. Y. Shemet and I. D. Olekseyuk, *J. Alloys Comp.*, 2006, **416**, 106.