

Supplementary data

Fig.S1. SEM images of SD700 electrode (a, c) and SD700 electrode after 60 cycles (b, d).

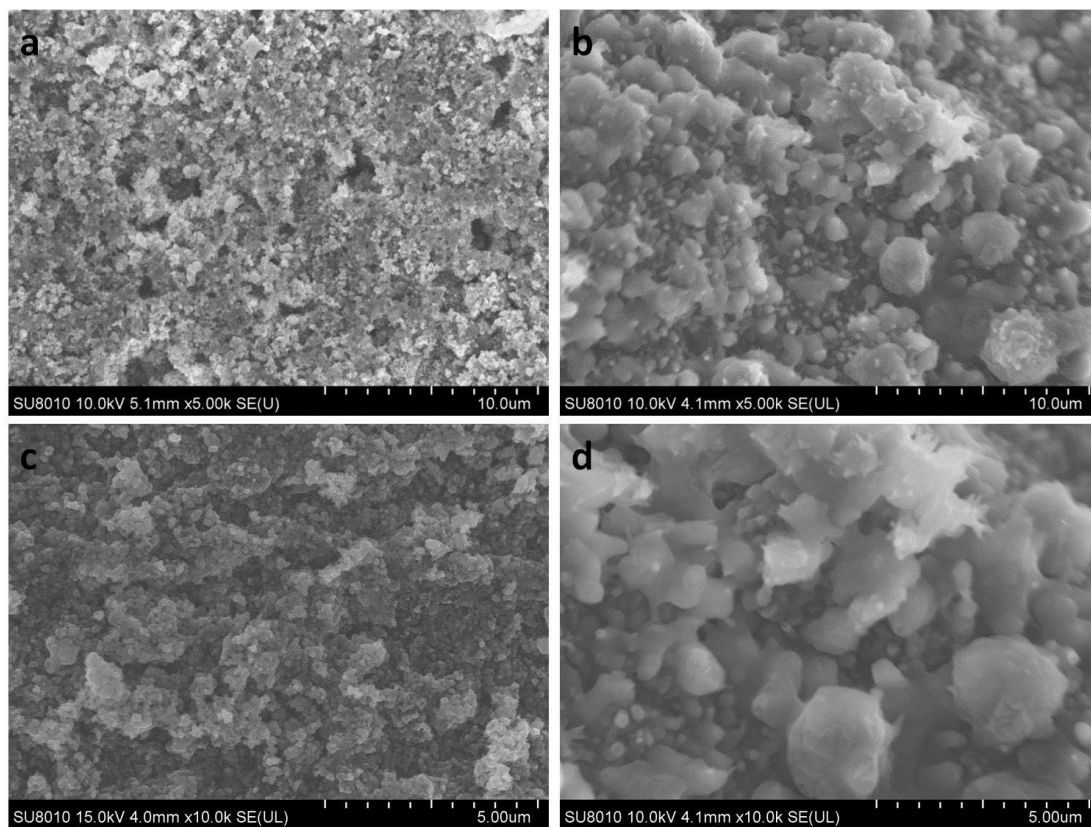


Fig. S2. XRD patterns of sample synthesized at different temperature.

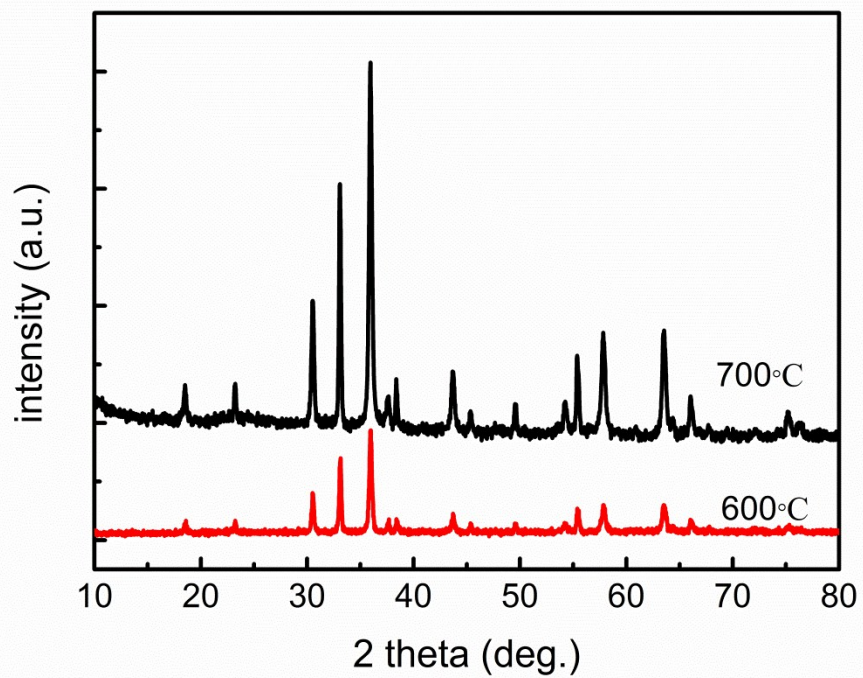


Fig. S3. Cycling performance of the sample obtained at 600 °C in the voltage range of 0.01-3.0 V vs. Li/Li⁺ at current densities of 100 mA g⁻¹.

