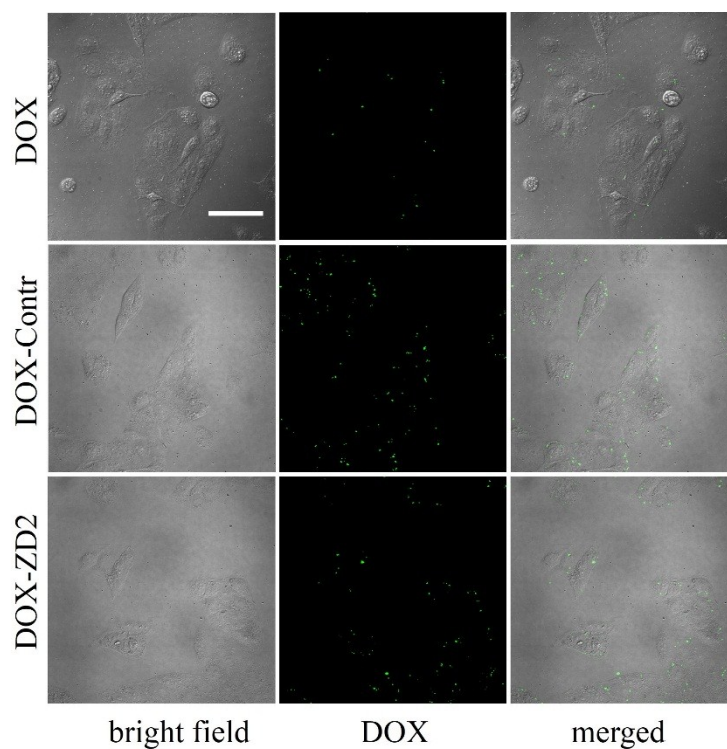


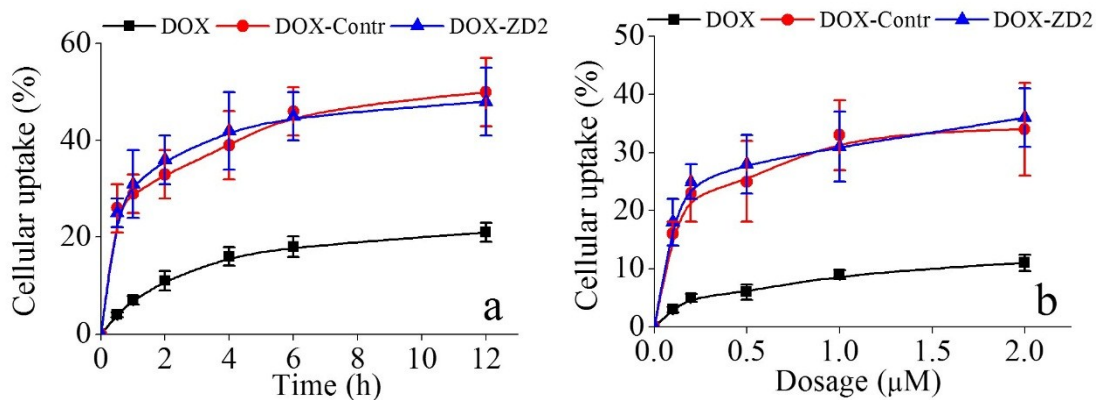
Supplementary Information

**Self-assembled nanoparticles covalently consisting of  
Doxorubicin and EDB fibronectin specific peptide for solid  
tumour treatment**

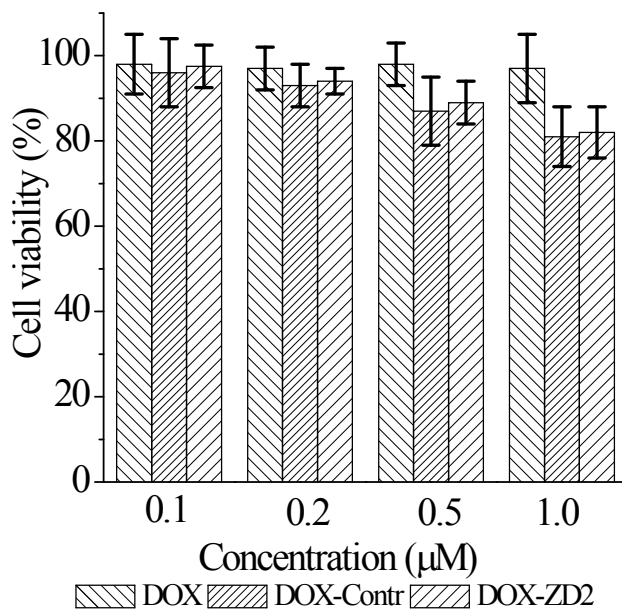
G.Y. Han,\* Z. Cui, B. Guo and X. F. Mei



**Figure S1.** CLSM images visualizing cellular uptakes of free DOX, DOX-Contr, and DOX-ZD2 in C2C12 cells after cultured for 30 min. Scale bar represents 100  $\mu\text{m}$ .



**Figure S2.** (a) Kinetic cellular uptake and (b) dosage efficiency of free DOX, DOX-Contr, and DOX-ZD2 in C2C12 cells. Data are presented as means  $\pm$  standard deviation (n=5).



**Figure S3.** Cell survival normalized to TCP, measured by the CCK-8 assay at 24 h. \*:  $p < 0.05$  and \*\*:  $p < 0.01$ , respectively. Data are presented as means  $\pm$  standard deviation (n=5).