

Fig.1. Effect of volume of 1 M HCl on RFI of FEB (20 ng ml⁻¹).

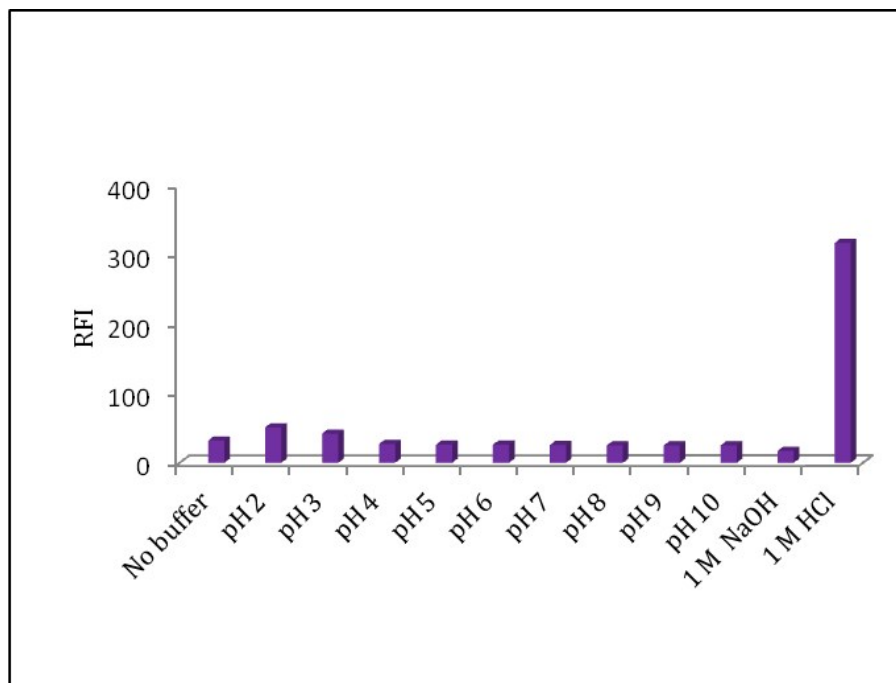


Fig.2. Effect of diluting solvent on RFI of FEB (20 ng ml⁻¹).

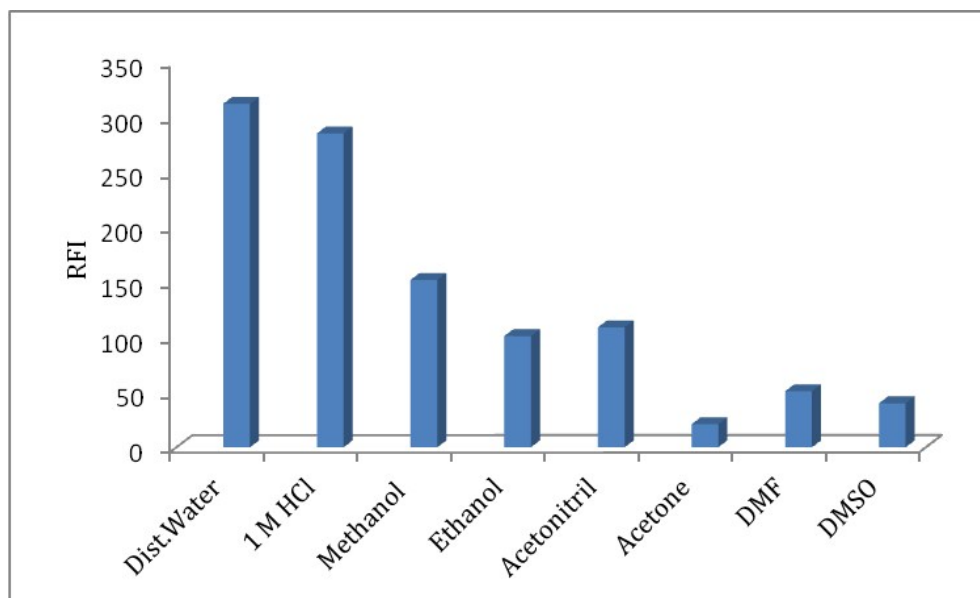


Fig.3. Effect of the type of organized media [β -CD (0.2 % w/v), SDS (0.3 % w/v), CTAB (0.2 % w/v) and Tween-80 (0.6 % v/v)] on RFI of FEB (20 ng ml⁻¹).

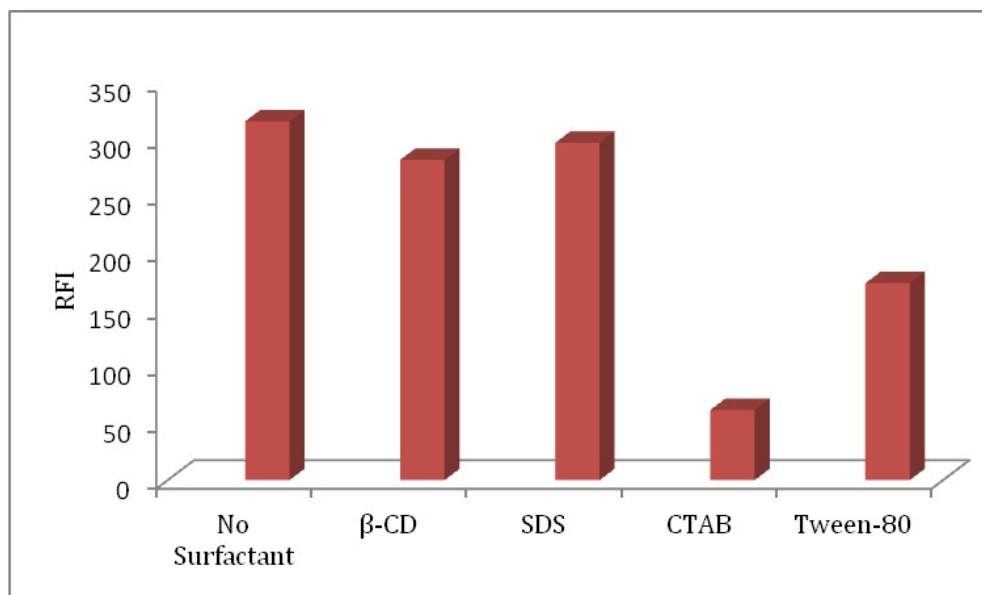


Fig.4. Fluorescence spectra of real human plasma containing FEB; (A and A') blank human plasma with 5 ml 1 M HCl, (B and B') human plasma containing 5 ng ml⁻¹ FEB, where: (A and B) are the excitation spectra and (A' and B') are the emission spectra.

