

Electronic Supplementary Information

**Surface Patch Binding Induced Interaction of Anisotropic Nanoclays with Globular
Plasma Proteins**

Kishan Das¹, Kamla Rawat^{2, 3*}, and H B Bohidar^{1,2*}

¹School of Physical Sciences, Jawaharlal Nehru University, New Delhi 110067, India

²Special Center for Nanosciences, Jawaharlal Nehru University, New Delhi 110067, India

³Inter University Accelerator Centre (IUAC), New Delhi 110067, India

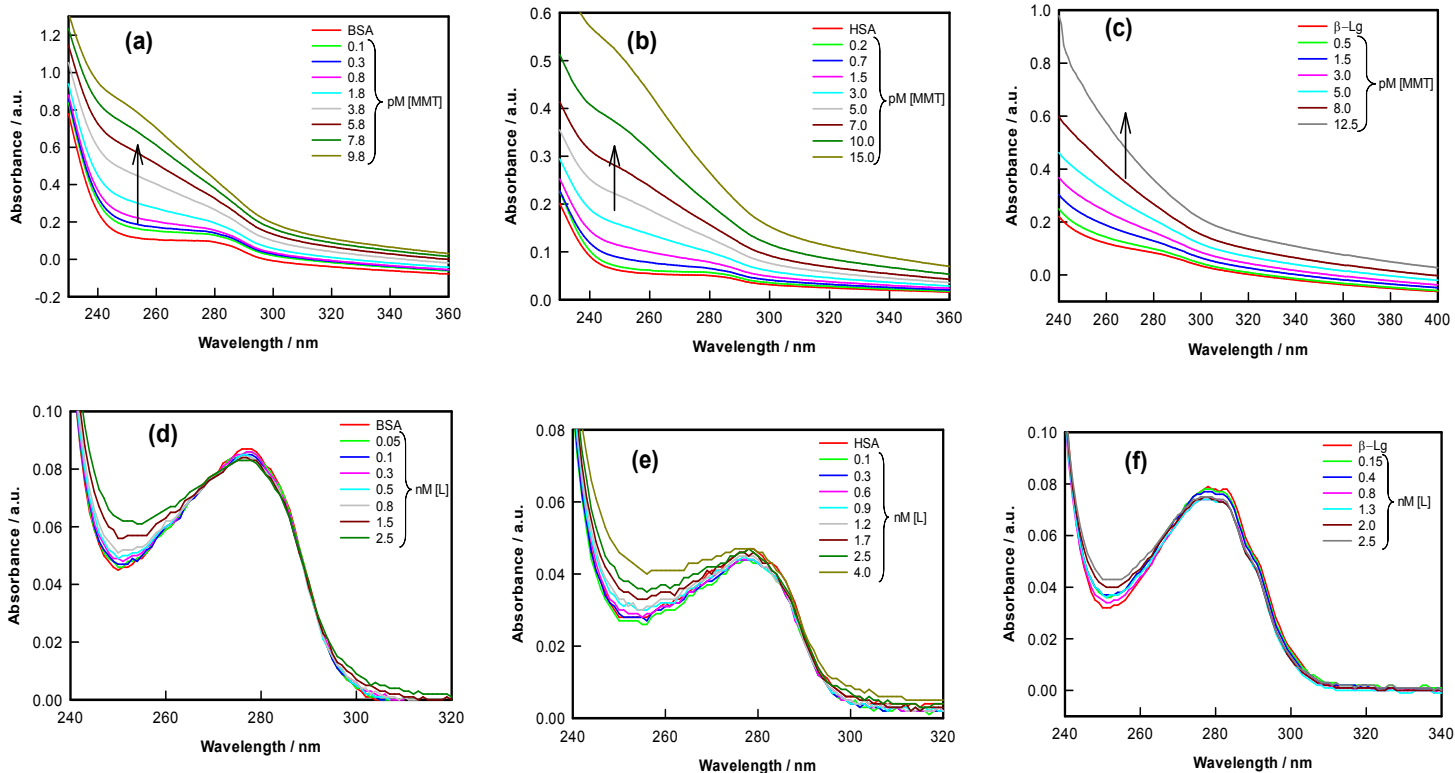


Figure S1: Absorbance spectra of proteins, (a) BSA(1.5 μ M), (b) HSA (1.5 μ M), (c) β -Lg (5.5 μ M) in the absence and presence of MMT and (d) BSA (1.5 μ M), (e) HSA (1.5 μ M), (f) β -Lg (5.5 μ M) in the absence and presence of laponite.

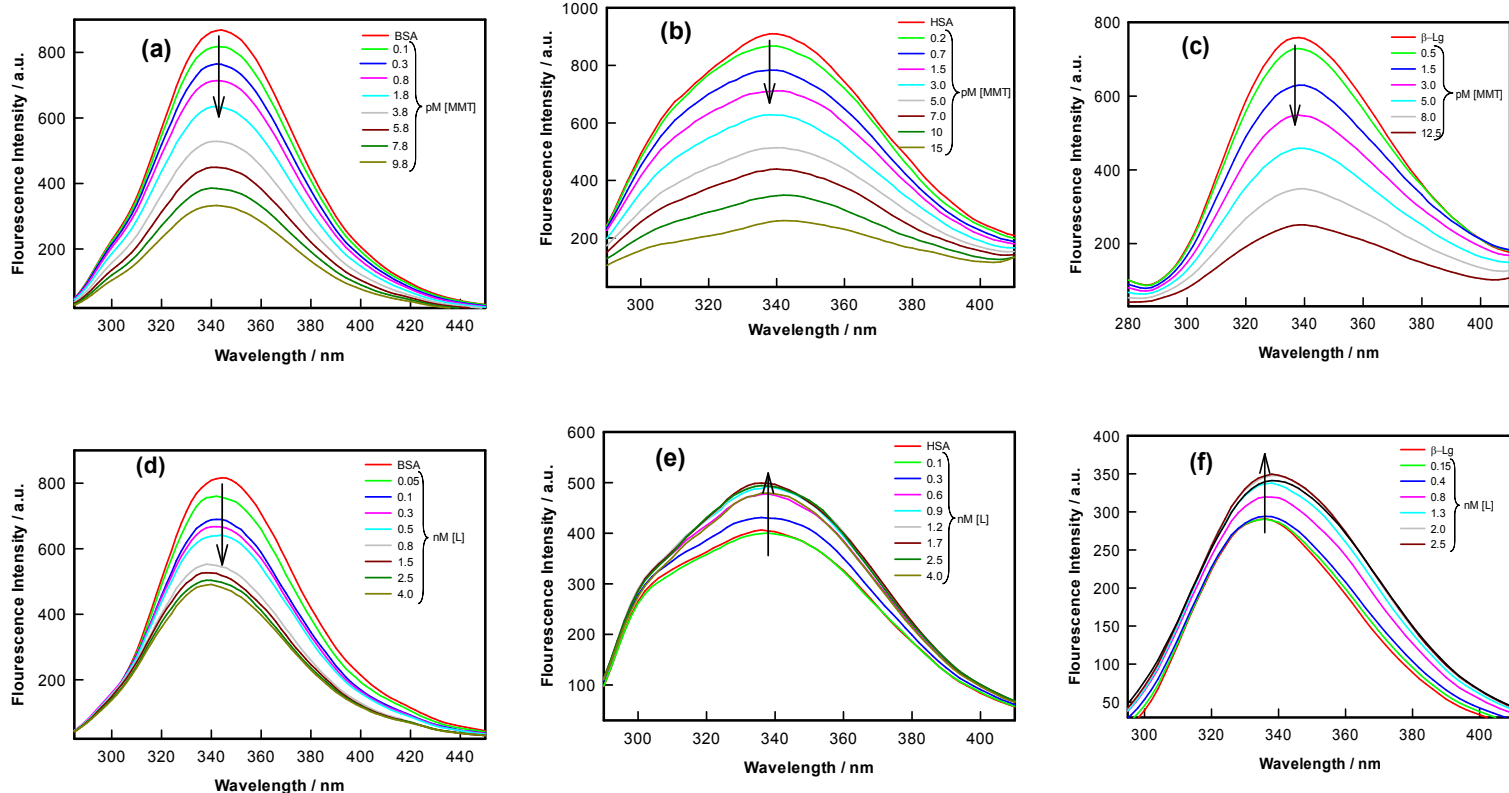
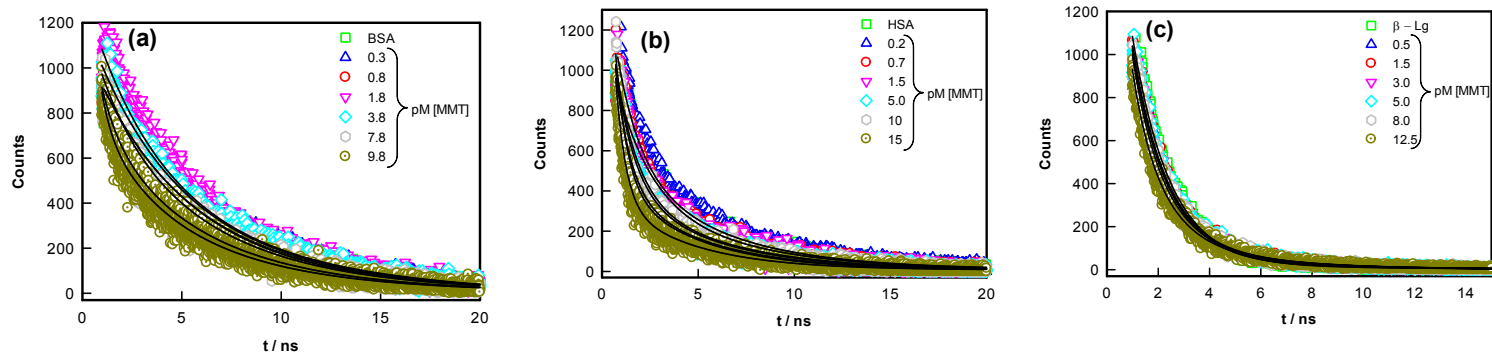


Figure S2: Emission spectra of proteins, (a) BSA(1.5 μ M), (b) HSA (1.5 μ M), (c) β -Lg (5.5 μ M) in the absence and presence of MMT and (d) BSA (1.5 μ M),(e) HSA (1.5 μ M), (f) β -Lg (5.5 μ M)in the absence and presence of laponite.



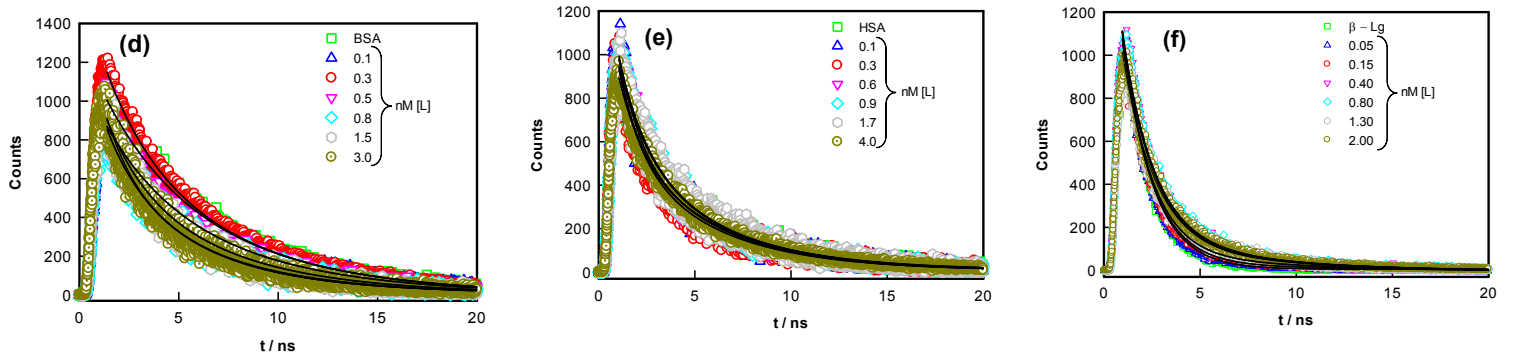


Figure S3: Time resolved fluorescence spectra of (a) BSA(1.5 μ M), (b) HSA (1.5 μ M), (c) β -Lg (5.5 μ M) in the absence and presence of various concentration of MMT and (d) BSA (1.5 μ M),(e) HSA (1.5 μ M), (f) β -Lg (5.5 μ M)in the absence and presence of various concentration of laponite recorded at room temperature (Excitation Wavelength = 290nm (LED)).

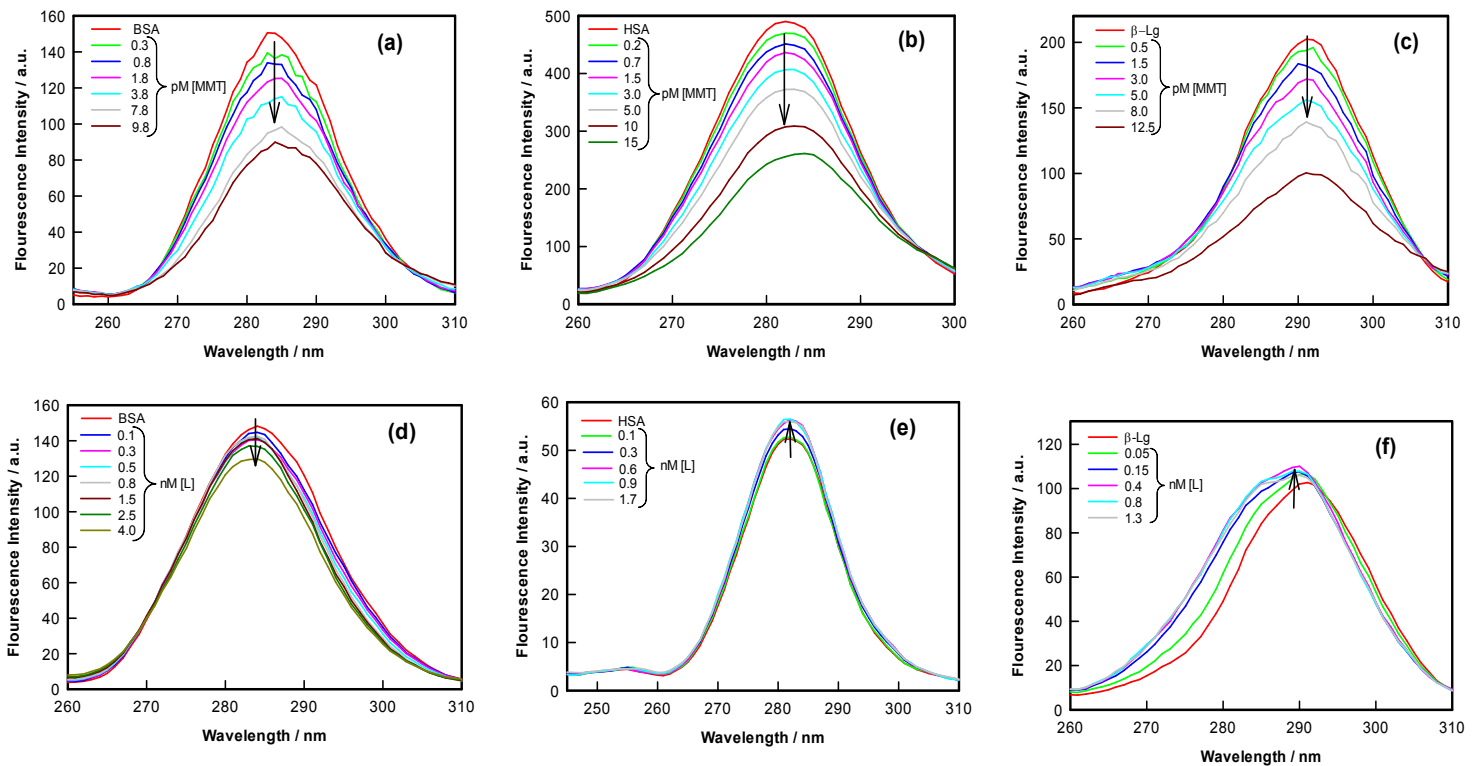


Figure S4:The synchronous fluorescence spectra at $\Delta\lambda=15$ nm (Tyrosine)of proteins, (a) BSA(1.5 μ M), (b) HSA (1.5 μ M), (c) β -Lg (5.5 μ M) in the absence and presence of MMT and (d) BSA (1.5 μ M),(e) HSA (1.5 μ M), (f) β -Lg (5.5 μ M)in the absence and presence of laponite.

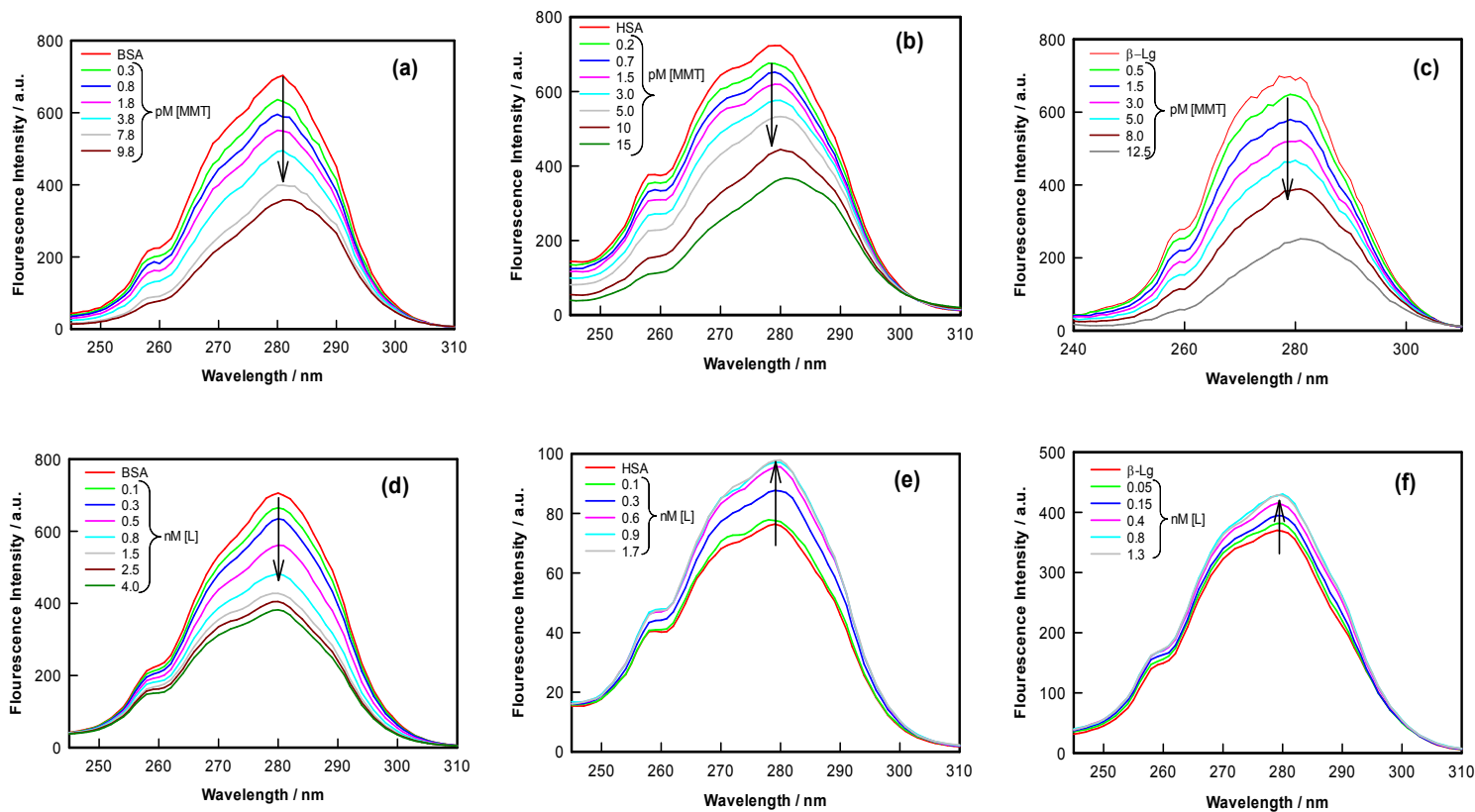
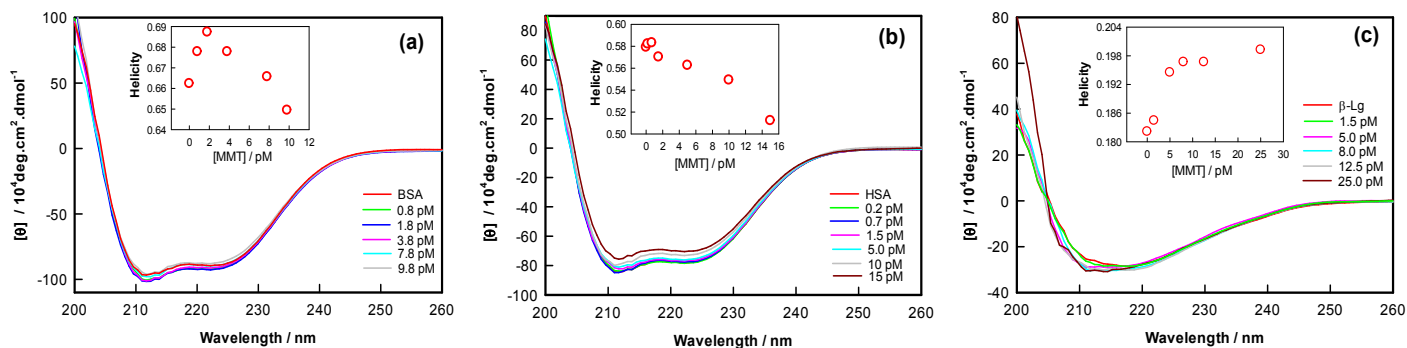


Figure S5: The synchronous fluorescence spectra at $\Delta\lambda=60$ nm (Tryptophan) of proteins, (a) BSA (1.5 μM), (b) HSA (1.5 μM), (c) β -Lg (5.5 μM) in the absence and presence of MMT and (d) BSA (1.5 μM), (e) HSA (1.5 μM), (f) β -Lg (5.5 μM) in the absence and presence of laponite.



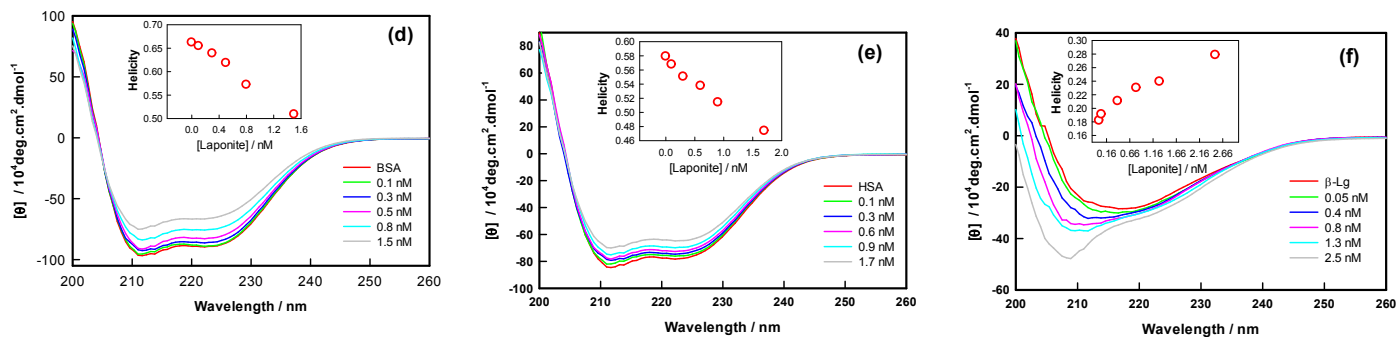


Figure S6: The CD spectra of proteins, (a) BSA (1.5 μM), (b) HSA (1.5 μM), (c) β -Lg (5.5 μM) in the absence and presence of MMT and (d) BSA (1.5 μM), (e) HSA (1.5 μM), (f) β -Lg (5.5 μM) in the absence and presence of laponite.