

Fig. S2 Water contact angle test on the obtained samples and the detailed content of the absorbed water show in the TGA curves. a) is the pure PI aerogel; e) is the silica aerogel powders; b), c), and d) are the PI/Sap composite aerogels PI/Sap-20, PI/Sap-50, and PI/Sap-80; f) is the amplified TGA curves which illustrated the weight loss at 100 °C. This value corresponding to the absorbed water, to a large extent, indicate the water resistance of the samples.

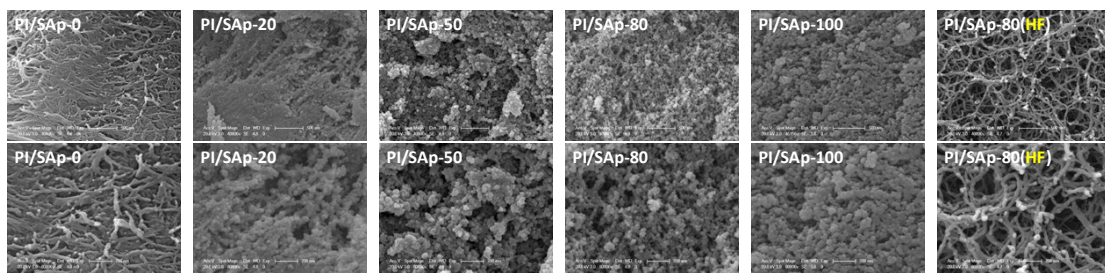


Fig. S3 SEM images at two different magnifications of all the obtained samples.

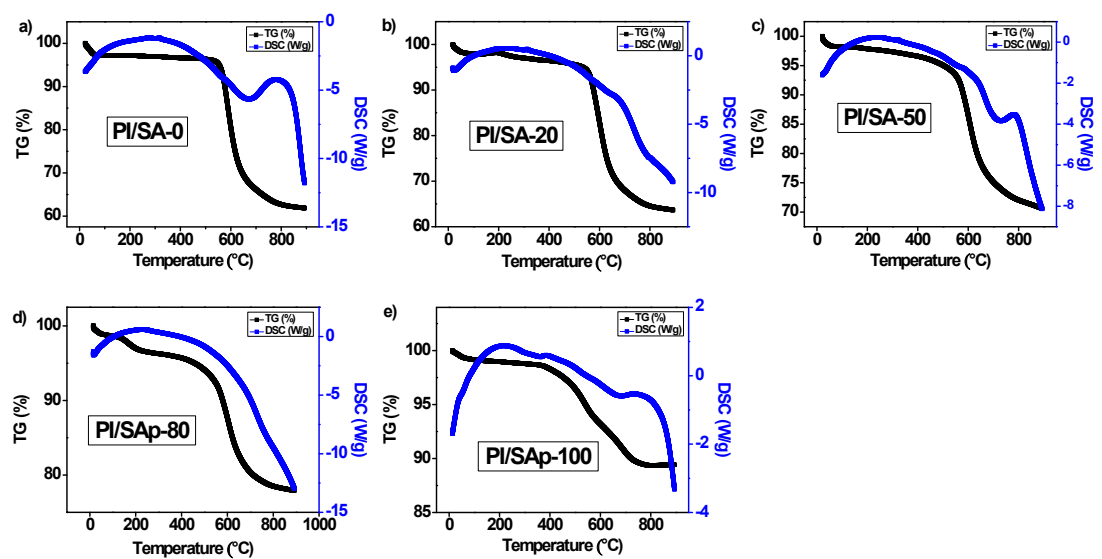


Fig. S4 TG-DSC curves of the all the obtained samples. a) is the pure PI aerogel (PI/SAp-0); e) is the silica aerogel powders(PI/SAp-100); b), c), and d) are the PI/Sap composite aerogels PI/SAp-20, PI/SAp-50, and PI/SAp-80;