

Supporting Information

Universal Route to Fabricate the Facile and Flexible Micro-supercapacitors with Gold-coated Silver Electrodes

Yizhen Yu, Jian Zhang, Wu Zhang, Ruili Liu, Xing Wu and Ziqiang Zhu*

Calculation

The capacitance values of Au @ Ag electrodes can be calculated from the CV data according to the following equation :

$$C_{cell} = I/(dV/dt)$$

Where I refers to the mean current in the CV curves and the discharge current in the CP; dV/dt refers to the scan rate in CV curves and the potential window divided by the discharge time. The area capacitance can be calculated from both CV data and CP data.

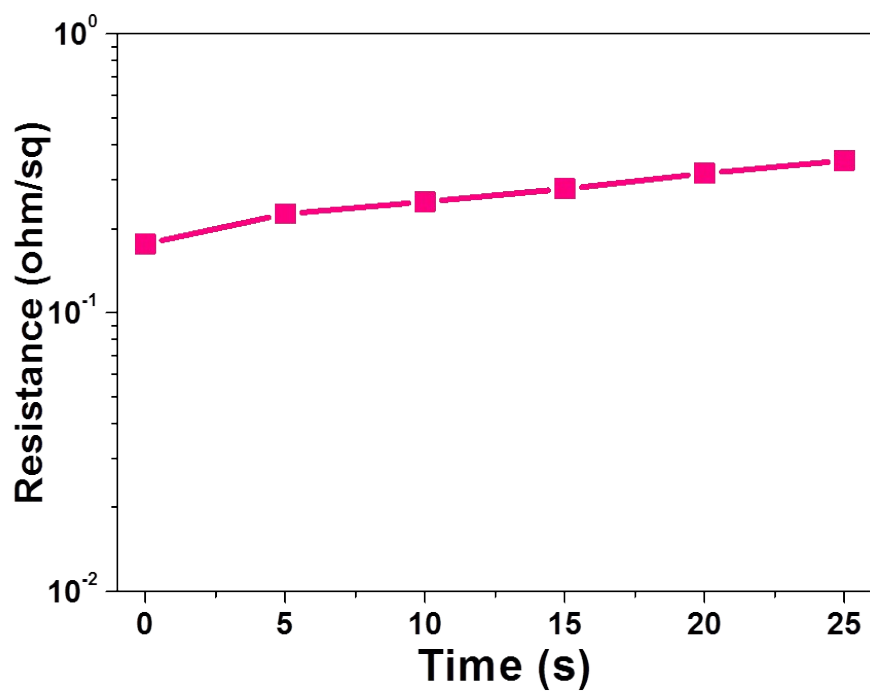


Fig. S1. A plot of the square resistance at different plating time.

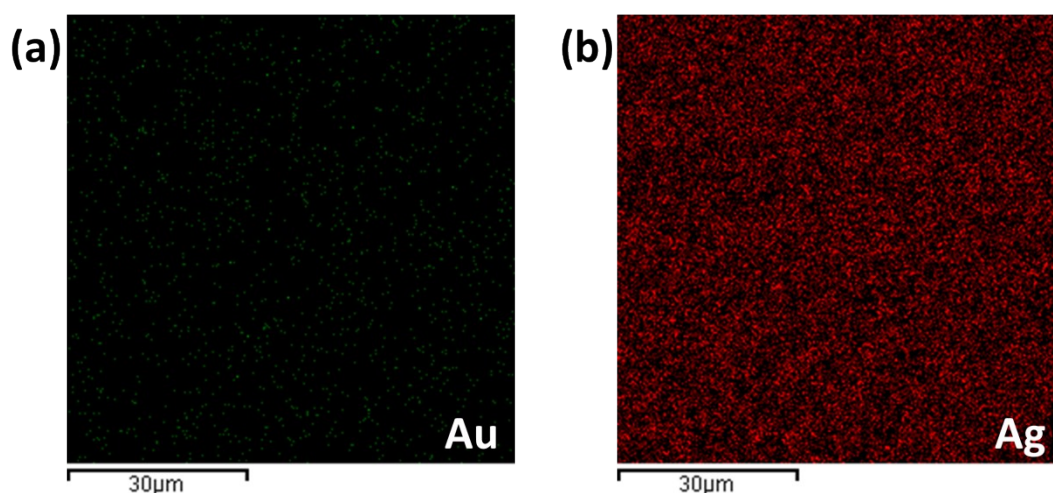


Fig. S2. (a-b) EDS mapping image of Au and Ag on Ag@Au MCCs

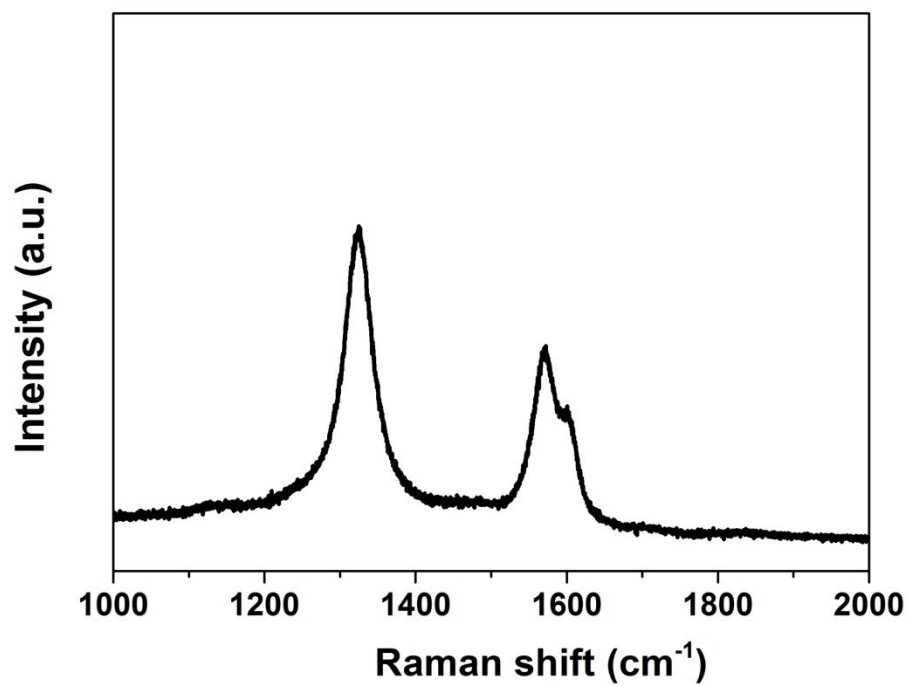


Fig. S3. Raman spectra of MWNTs

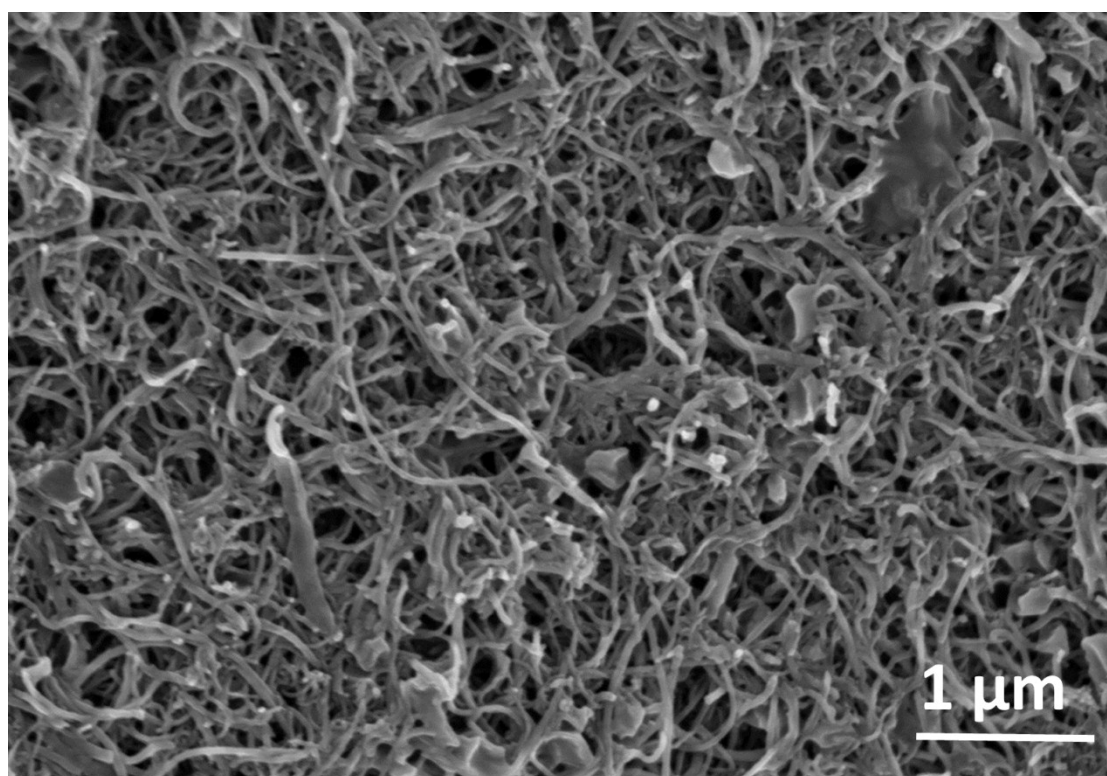


Fig. S4. SEM image of MWNTs

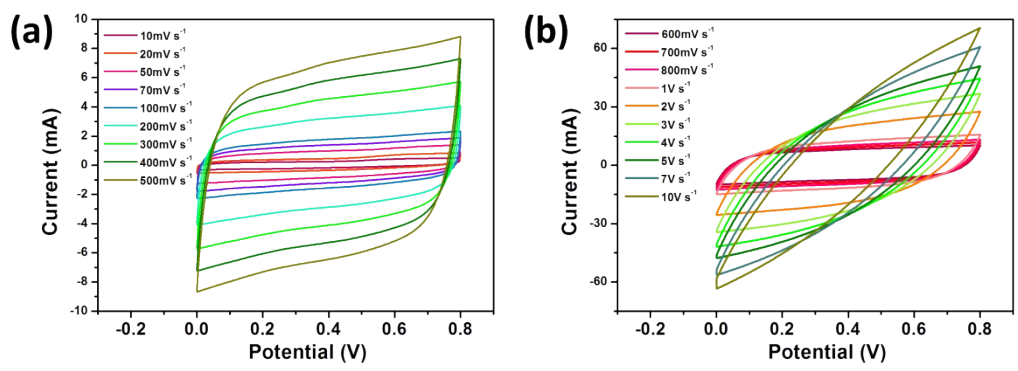


Fig. S5. (a-b) CV curves of Ag@Au MSCs at different scan rate of 10 mV s⁻¹ to 10 V s⁻¹

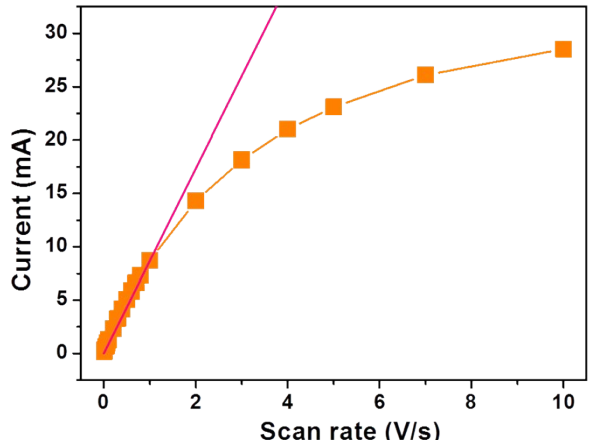


Fig. S6. A plot of the discharge current as a function of the scan rate.

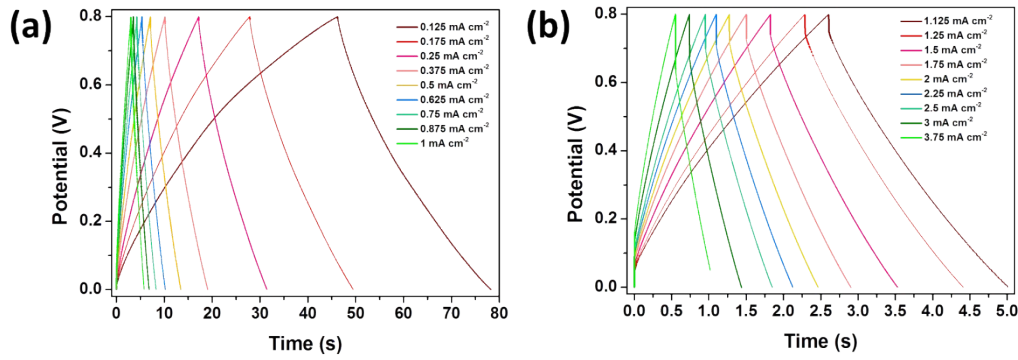


Fig. S7. (a-b) Galvanostatic charge/discharge curves of Ag@Au MSCs at different current density of 0.125 to 3.75 mA cm⁻².

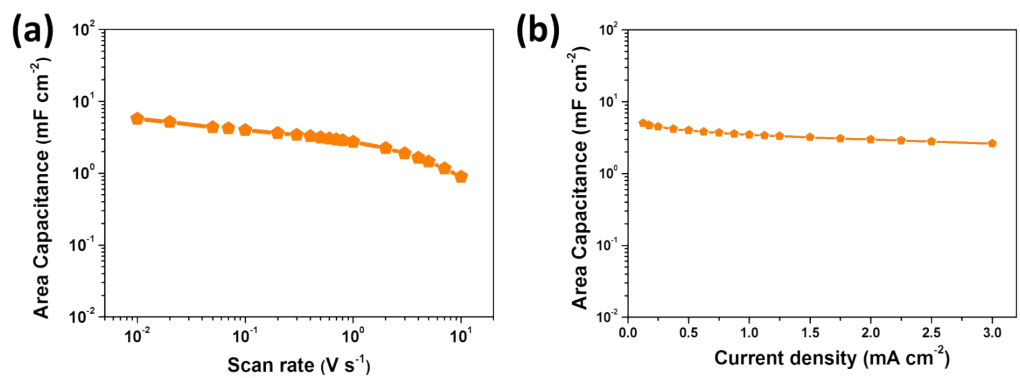


Fig. S8. (a-b) Area capacitances calculated from CV curves and galvanostatic charge/discharge curves