

Electronic Supplementary Information (ESI) for RSC Advances

This journal is © The Royal Society of Chemistry 2016

Enhanced methanol sensing properties of SnO₂ microspheres composited with Pt nanoparticles

Yuxiu Li,^a Dongyang Deng,^a Nan Chen,^b Xinxin Xing,^a Xuechun Xiao,^{a,c} Yude Wang^{b,c*}

*a School of Materials Science and Engineering, Yunnan University, 650091 Kunming,
People's Republic of China*

b Department of Physics, Yunnan University, 650091 Kunming, People's Republic of China

*c Yunnan Province Key Lab of Mico-Nano Materials and Technology, Yunnan University,
650091 Kunming, People's Republic of China*

*** Correspondence:**

Prof. Yude Wang (ydwang@ynu.edu.cn), Department of Physics, Yunnan University,
650091 Kunming, Peoples' Republic of China, Tel: +86-871-65035570, Fax: +86-871-
65153832.

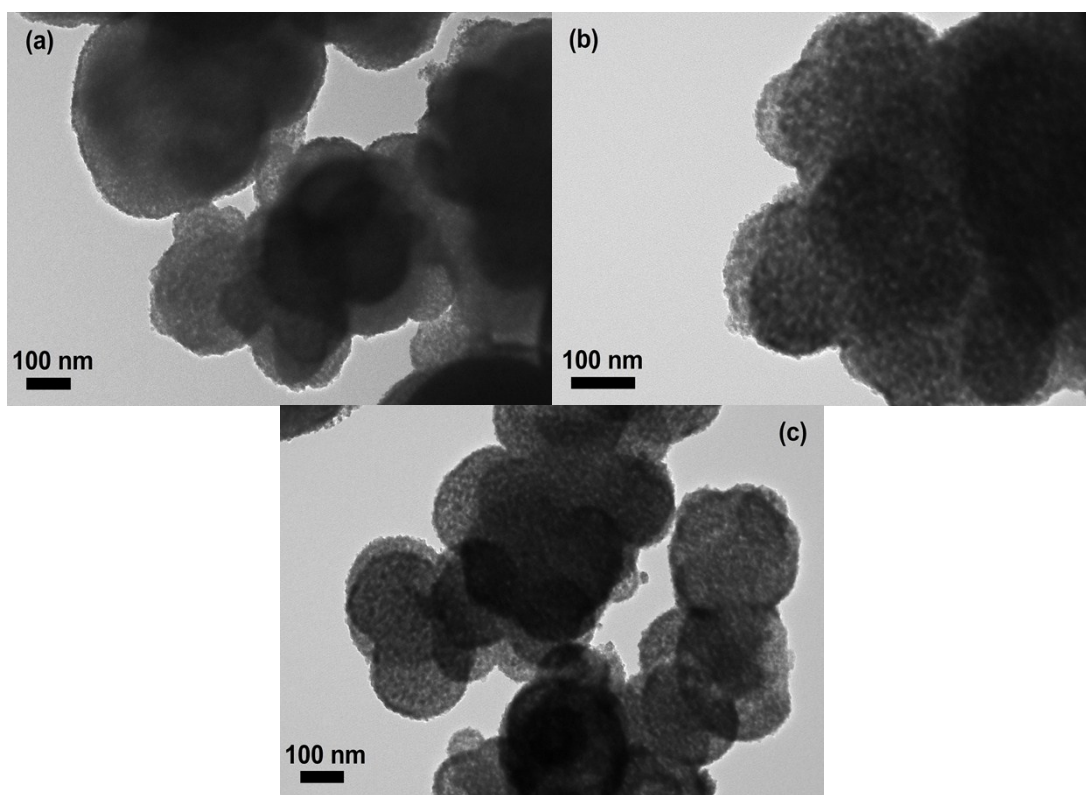


Figure S1 TEM images of (a) 0.5 mol%, (b) 1.5 mol%, and (c) 2.5 mol% Pt-SnO₂.

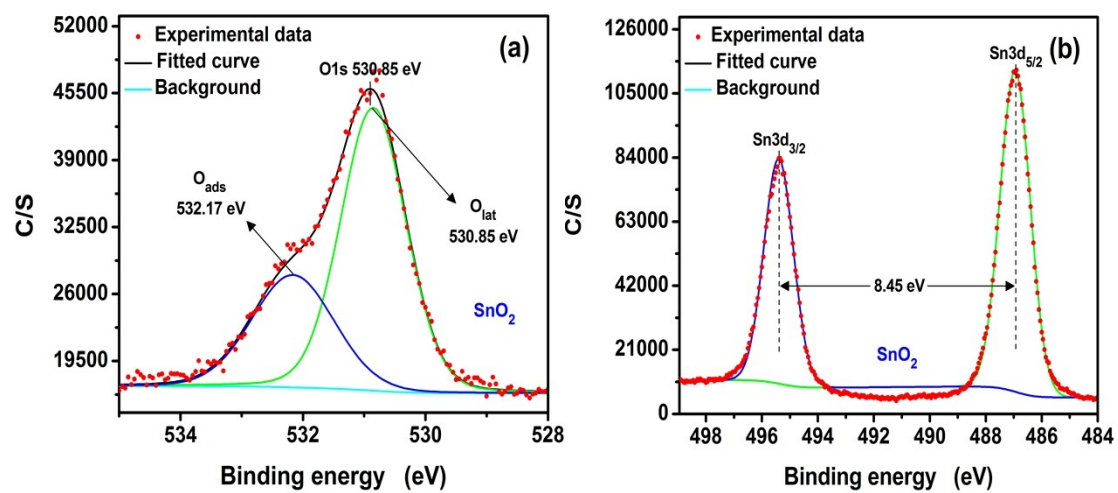


Figure S2 The high-resolution XPS survey spectra of (a) O 1s and (b) Sn 3d for pristine SnO₂.