

Table ESI 1. Epidemiological details of the *Candida* species isolates included in this study.

Species	N	Code	Biological product	Year	Country
<i>C. albicans</i>	13	489	Blood	2012	Brazil
		620	Urine	2014	Brazil
		ATCC900288	Reference	-	-
		632	Urine	2014	Brazil
		392	Blood	2011	Brazil
		555	Blood	2011	Brazil
		84	Blood	2007	Brazil
		505413	Vaginal exsudate	2008	Portugal/Braga
		568426	Expectoration	2008	Portugal/Braga
		564272	Vaginal exudate	2008	Portugal/Braga
		560	Blood	2014	Brazil
		455	Blood	2010	Brazil
		127	Blood	2007	Brazil
<i>C. glabrata</i>	13	330	Blood	2010	Brazil
		588	Urine	2014	Brazil
		536	Urine	2013	Brazil
		503	Blood	2013	Brazil
		590	Urine	2014	Brazil
		625	Urine	2014	Brazil
		ATCC2001	Reference	-	-
		480432	Urine	2008	Portugal/Braga
		513100	Urine	2008	Portugal/Braga
		562123	Urine	2008	Portugal/Braga
585626	Vaginal exudate	2008	Portugal/Braga		
585	Urine	2014	Brazil		
579	Urine	2014	Brazil		
<i>C. krusei</i>	11	2.2	Urine	2008	Portugal/Braga
		EPAM02	Urine	2008	Portugal/Braga
		RMSA4518	Urine	2008	Portugal/Braga
		EPAH04	Urine	2008	Portugal/Braga
		M309	Urine	2008	Portugal/Braga
		33	Vaginal exudate	2008	Portugal/Braga
		69	Vaginal exudate	2008	Portugal/Braga
		OLO111	Catheter venoso	2008	Portugal/Porto
		M8	Vaginal exudate	2008	
		OL100	Stool	2008	Portugal/Porto
OL132	Sputum	2008	Portugal/Porto		
<i>C. parapsilosis</i>	14	397	Blood	2011	Brazil
		303	Blood	2010	Brazil
		434	Blood	2012	Brazil
		568	Blood	2014	Brazil
		574	Urine	2014	Brazil
		453	Blood	2010	Brazil
		412	Blood	2011	Brazil
		537655	Vaginal exudate	2008	Portugal/Braga
		ATCC22019	Reference	-	-

		141	Oral	2008	Portugal/Braga
		AM2	Oral	2008	Portugal/Braga
		470	Blood	2012	Brazil
		475	Blood	2012	Brazil
		200	Blood	2009	Brazil
		497	Blood	2013	Brazil
		615	Urine	2014	Brazil
		606	Urine	2014	Brazil
		624	Urine	2014	Brazil
		630	Urine	2014	Brazil
		558	Urine	2014	Brazil
<i>C. tropicalis</i>	12	ATCC 750	Reference	-	-
		12	Vaginal exudate	2008	Portugal/Braga
		612	Urine	2014	Brazil
		75	Vaginal exudate	2008	Portugal/Braga
		575343	Urine	2008	Portugal/Braga
		85	Urine		Brazil
		16	Urine	2008	Brazil
		29	Urine	2008	Portugal/Braga
<i>C. lusitaniae</i>	4	30	Urine	2008	Portugal/Braga
		37	Urine	2008	Portugal/Braga
		OL142	Urine	2009	Portugal/Porto
<i>C. famata</i>	2	63	-		Portugal/Porto
		OL120	Sputum	2008	Portugal/Porto
		31			Portugal/Porto
<i>C. dubliniensis</i>	3	ATCC 87	Reference	-	-
		CBS			Portugal/Porto
<i>C. orthopsilosis</i>	2	CO8	-	-	Portugal/Porto
		CO2	-	-	Portugal/Porto
		16	-	-	Portugal/Porto
<i>C. metapsilosis</i>	4	17	-	-	Portugal/Porto
		OLO49	Sputum	2007	Portugal/Porto
		OLO67	Pus	2008	Portugal/Porto
<i>C. bracarensis</i>	2	153MT	Vaginal exudate		Portugal/Braga
		CNMCL7030	Catheter		Spain
		NCYC3133	Blood		United Kingdom
<i>C. guilliermondii</i>	2	OLO77	Cerebrospinal fluid	2008	Portugal/Porto
		OLO72	Sputum	2008	Portugal/Porto

N- number of isolates of each species; Code- laboratory internal code of the isolate

Figure ESI 1. Loadings 1 (—) and 2 (—) of the PLSDA regression model for discriminating between *C. albicans*, *C. glabrata*, *C. krusei*, *C. parapsilosis* and *C. tropicalis*.

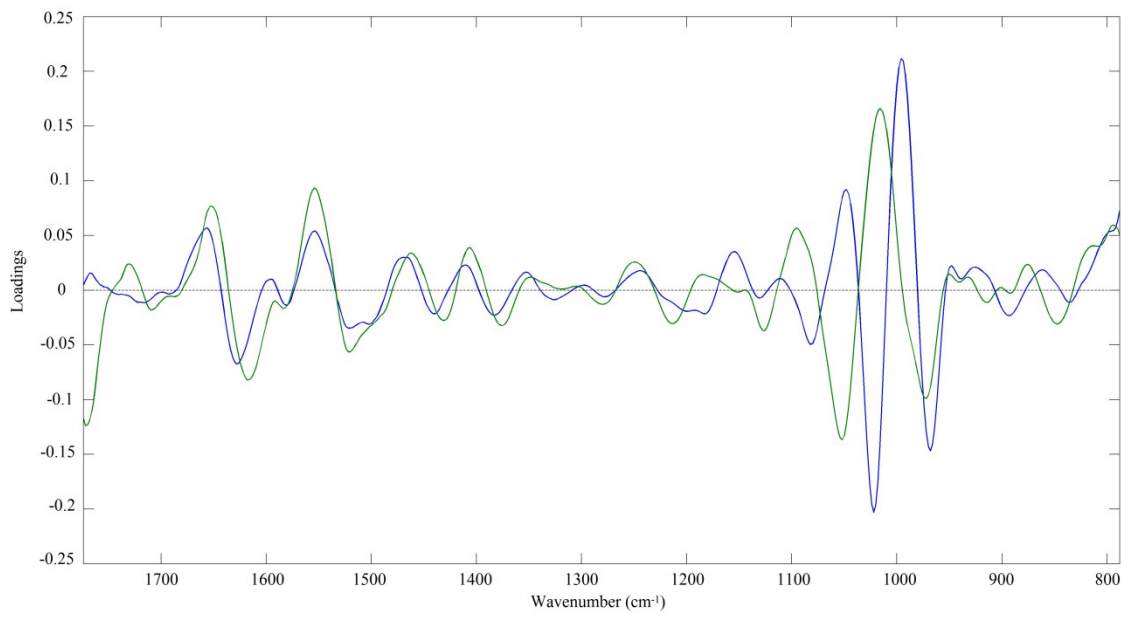
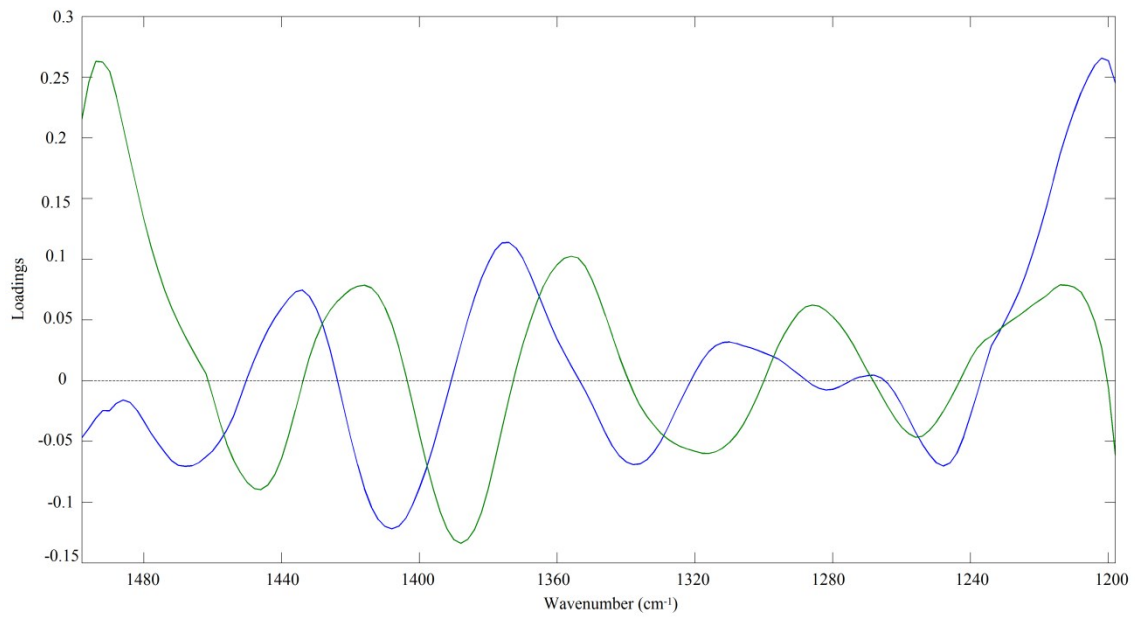


Figure ESI 2. Loadings 1 (—) and 2 (—) of the PCA model for discriminating between *C. parapsilosis*, *C. metapsilosis* and *C. orthopsilosis*.



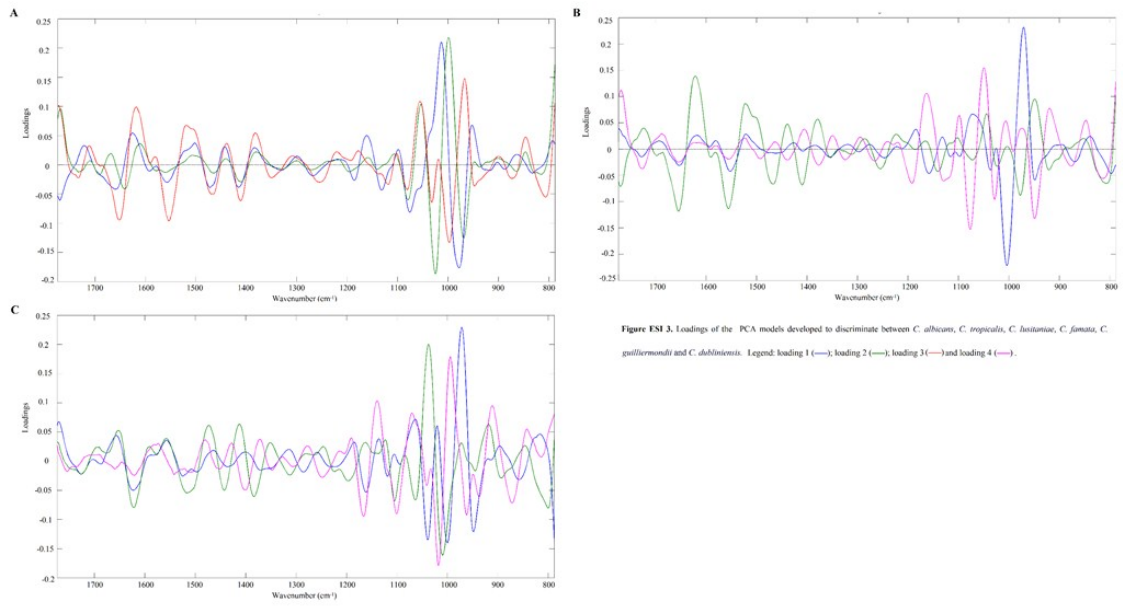


Figure ESI 4. Loadings 1 (—), 2 (—) and 3 (—) of the PCA model developed to discriminate between *C. glabrata* and *C. braccarensis*.

