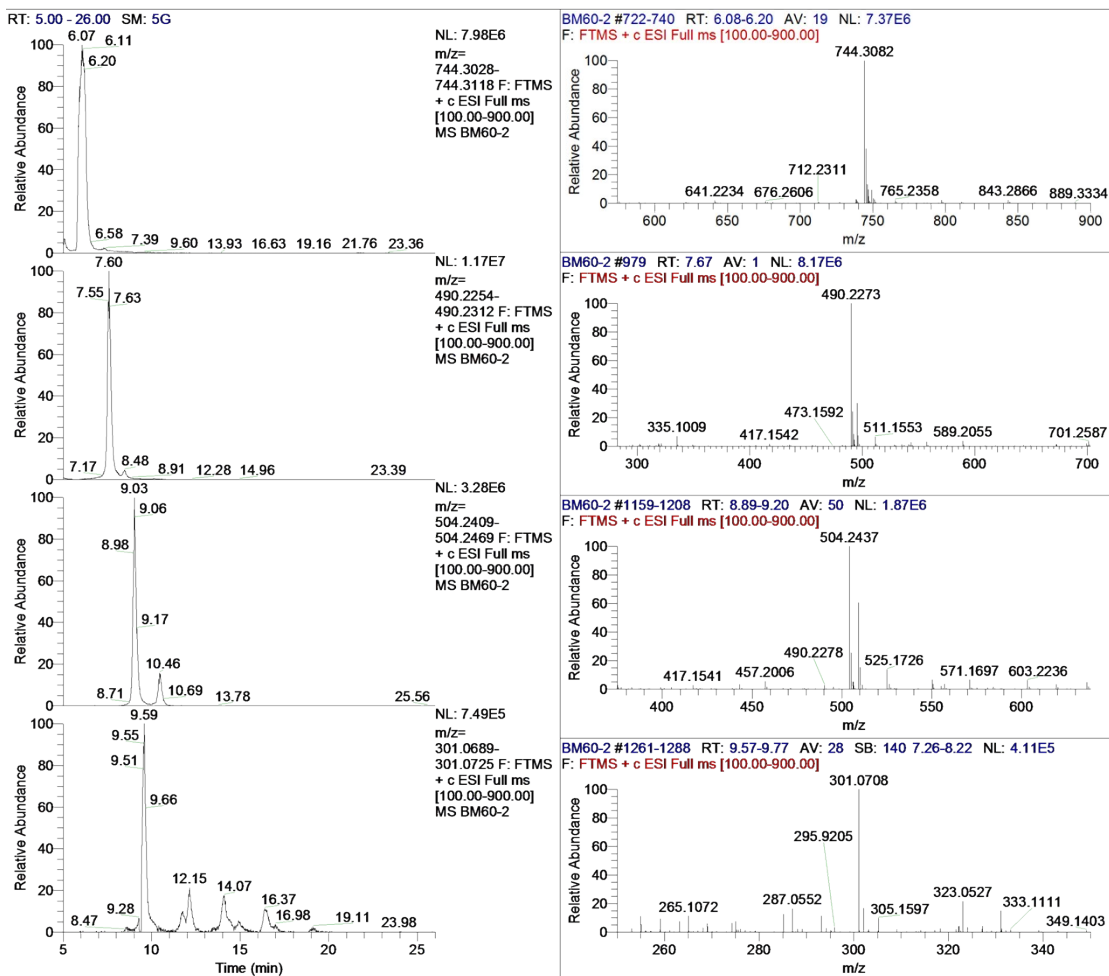
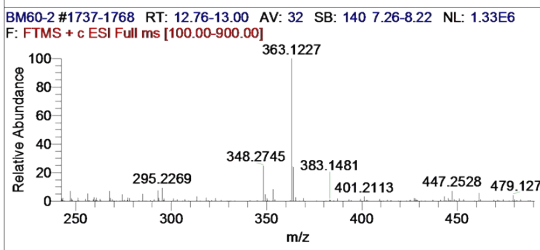
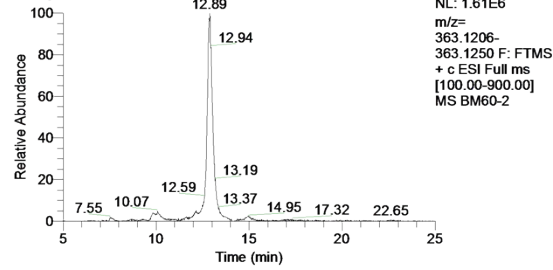
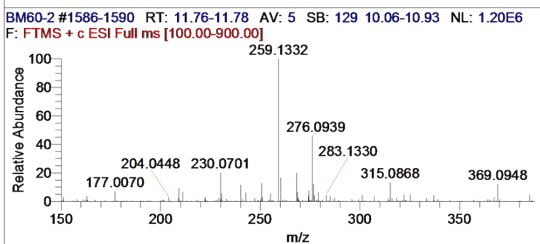
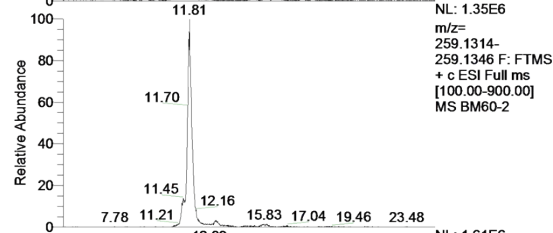
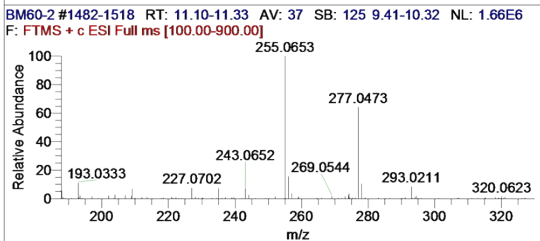
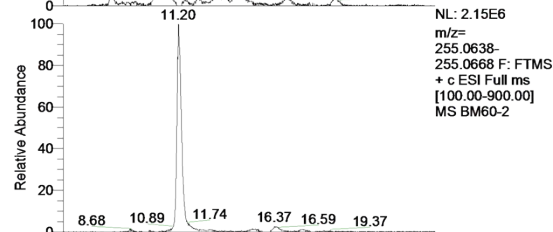
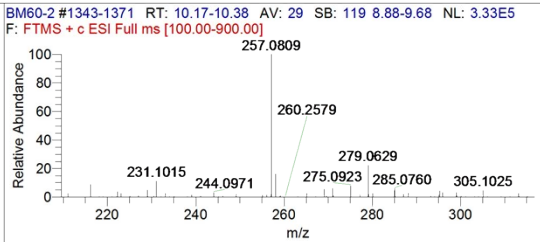
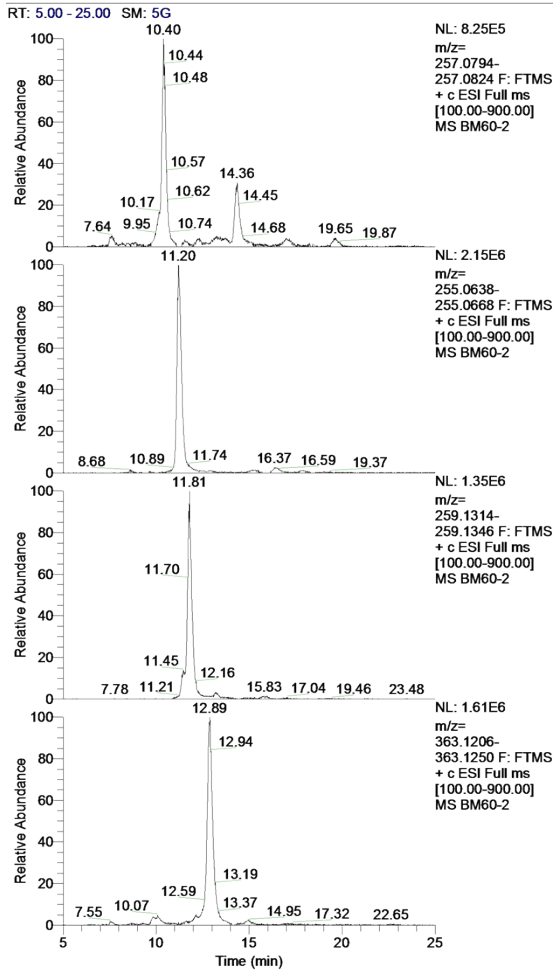


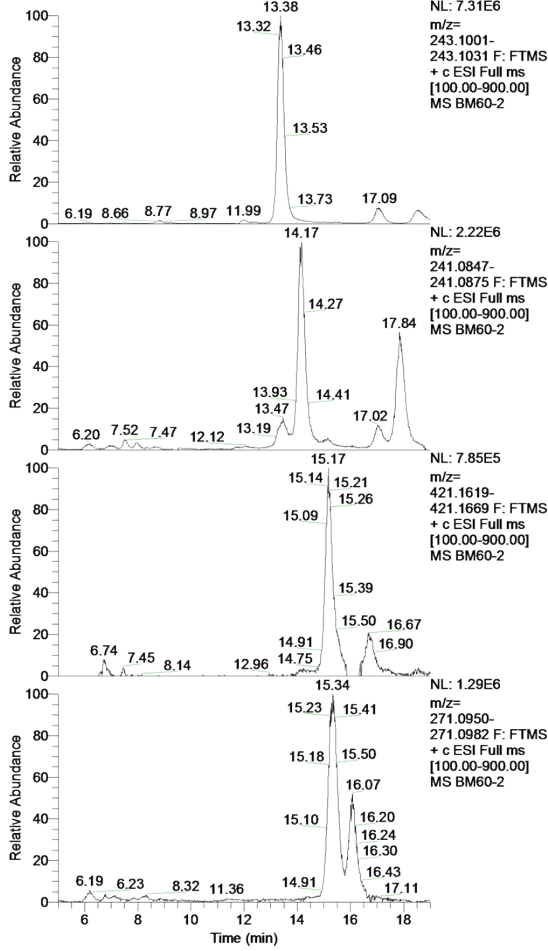
E:\data\Tests\201606\BM60-2

6/13/2016 7:37:07 PM

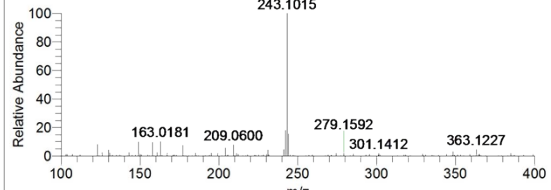




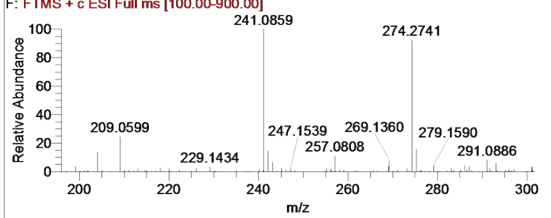
RT: 5.00 - 19.00 SM: 5G



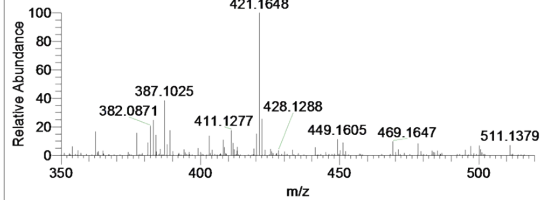
BM60-2 #1796-1824 RT: 13.17-13.36 AV: 29 NL: 4.19E6
F: FTMS + c ESI Full ms [100.00-900.00]



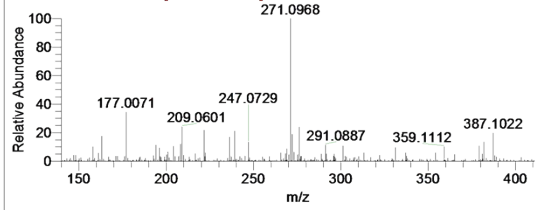
BM60-2 #1943-1946 RT: 14.24-14.26 AV: 4 NL: 1.50E6
F: FTMS + c ESI Full ms [100.00-900.00]



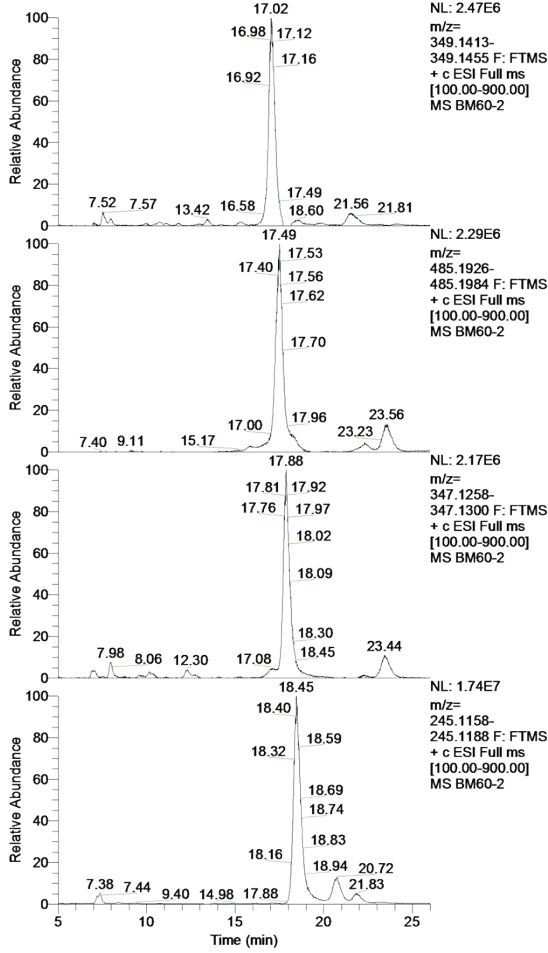
BM60-2 #2062-2063 RT: 15.12-15.13 AV: 2 NL: 6.76E5
F: FTMS + c ESI Full ms [100.00-900.00]



BM60-2 #2124-2126 RT: 15.56-15.57 AV: 3 SB: 221 13.78-15.41 NL: 3.32E5
F: FTMS + c ESI Full ms [100.00-900.00]

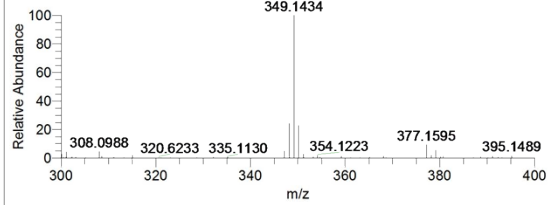


RT: 5.00 - 26.00 SM: 5G

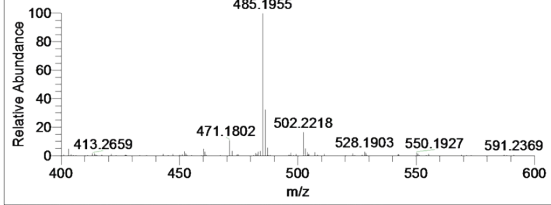


NL: 2.47E6
m/z=
349.1413-
349.1455 F: FTMS
+ c ESI Full ms
[100.00-900.00]
MS BM60-2

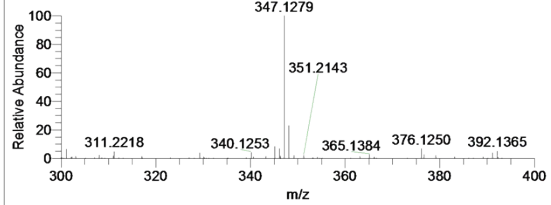
BM60-2 #2346-2415 RT: 16.92-17.32 AV: 70 NL: 1.81E6
F: FTMS + c ESI Full ms [100.00-900.00]



BM60-2 #2401-2461 RT: 17.24-17.58 AV: 61 NL: 1.74E6
F: FTMS + c ESI Full ms [100.00-900.00]



BM60-2 #2502-2540 RT: 17.84-18.11 AV: 39 NL: 1.57E6
F: FTMS + c ESI Full ms [100.00-900.00]



BM60-2 #2556-2599 RT: 18.23-18.54 AV: 44 NL: 1.33E7
F: FTMS + c ESI Full ms [100.00-900.00]

