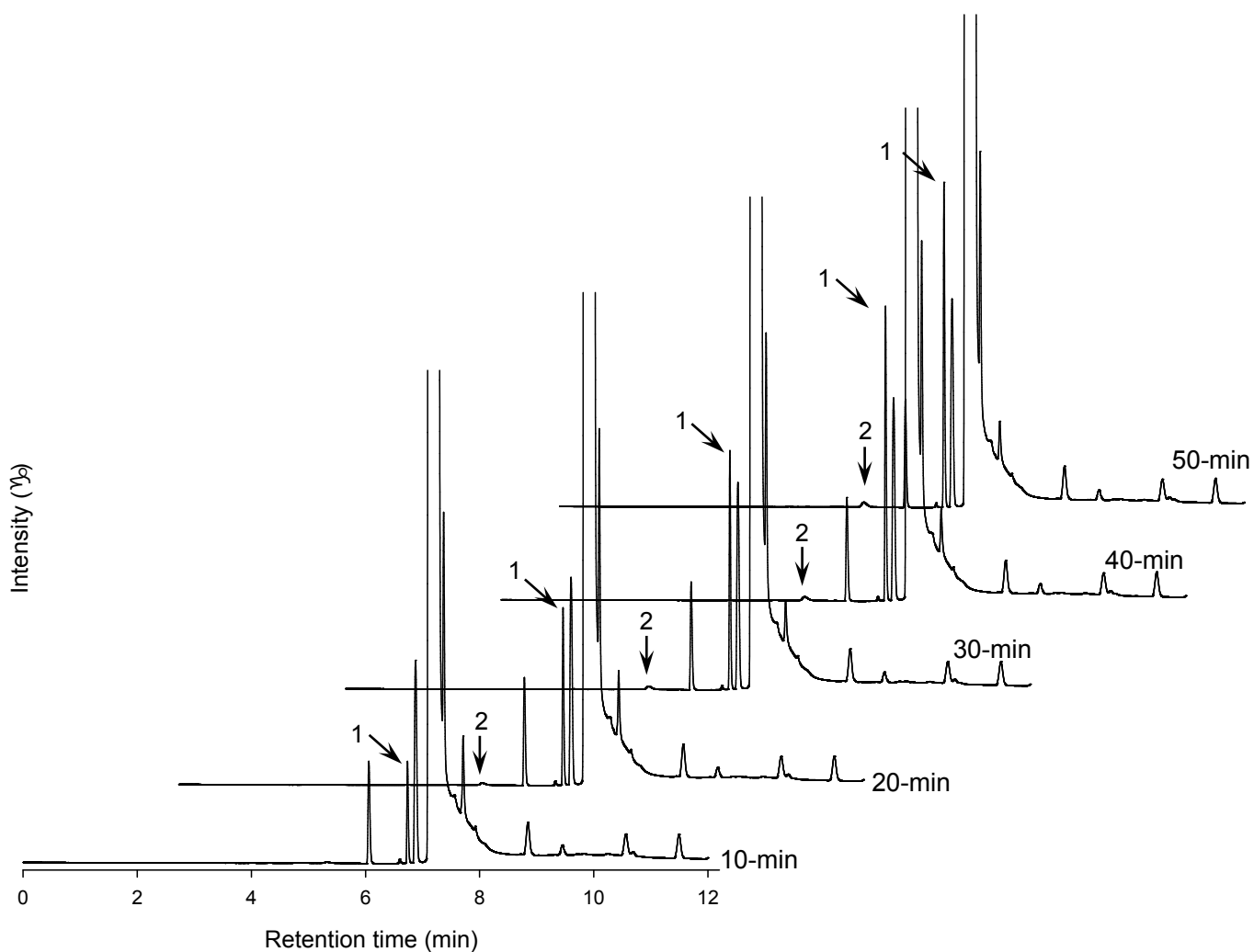


Electronic Supplementary Information (ESI)

Supplementary data 1. GC chromatograms showing the aqueous concentrations of methyl propionate and methanol as a function of time observed with the methyl propionate–water mixture. Ammonia was added to water. Arrows 1 and 2 show the peaks of methyl propionate and methanol, respectively. While the aqueous methyl propionate concentration increases over time, the aqueous phase contains a very low amount of methanol.



Supplementary data 2. Dynamic changes in the color of the Sudan III-containing o/w emulsion treated with methylamine. The molar ratio of methyl propionate–methylamine was set at 1:0.5.

