

SUPPORTING INFORMATION

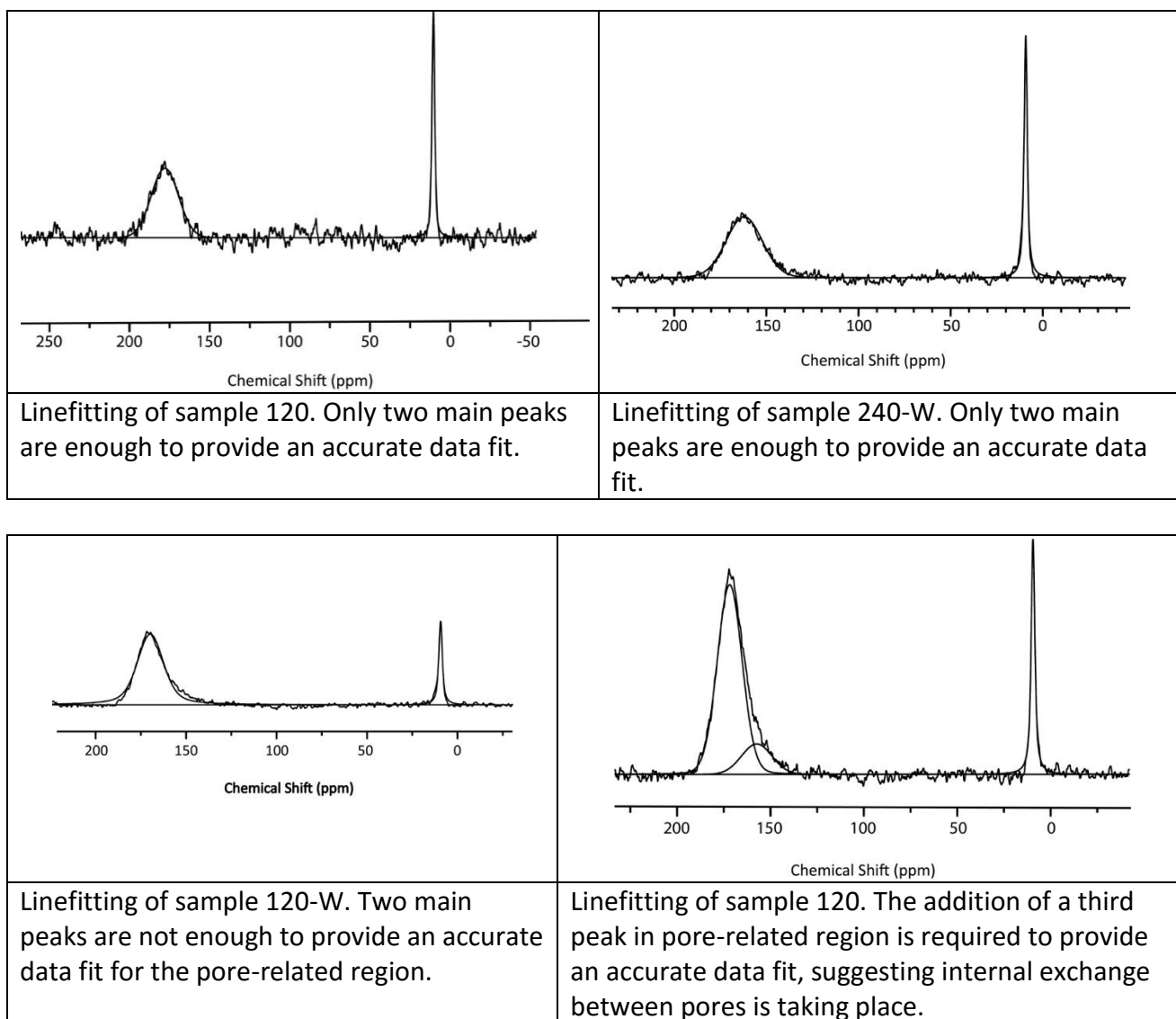
^{129}Xe NMR Studies of Morphology and Accessibility in Porous Biochar from Almond Shells M. Farina^a, M. Mauri^{a,b,*}, G. Patriarca^a, R. Simonutti^{a,b}, K.T. Klasson^c, and H.N. Cheng^{c,*}

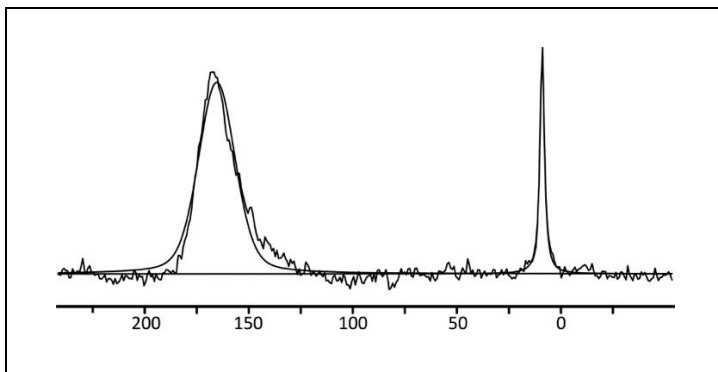
^a Department of Material Science, University of Milan-Bicocca, via R. Cozzi 55, 20125 Milan, Italy

^b INSTM, via Giuseppe Giusti, 9, 50121 Firenze, Italy

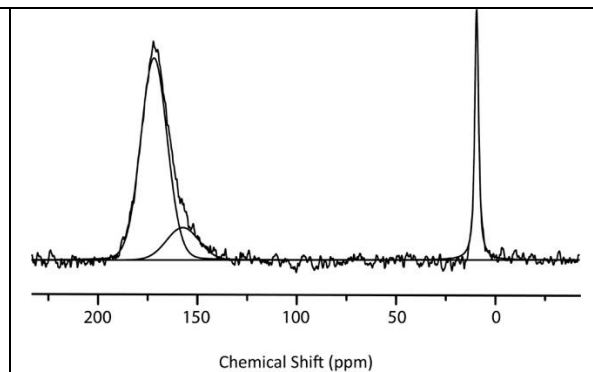
^c USDA Agricultural Research Service, Southern Regional Research Center, New Orleans, LA 70124, USA

Line fitting of 1D spectra with two or three main peaks.





Linefitting of sample 240. Two main peaks are not enough to provide an accurate data fit.



Linefitting of sample 240-W. The addition of a third peak in pore-related region is required to provide an accurate data fit, suggesting internal exchange between pores is taking place.