

## Supporting Information

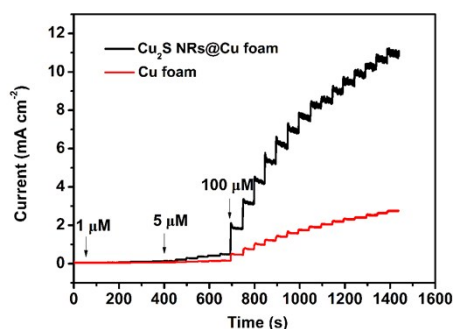
### Fabrication of cuprous sulfide nanorods supported on copper foam for nonenzymatic amperometric determination of glucose and hydrogen peroxide

Wangdong Lu,<sup>ab</sup> Yujing Sun<sup>a</sup>, Haichao Dai,<sup>ab</sup> Pengjuan Ni,<sup>ab</sup> Shu Jiang,<sup>ab</sup> Yilin Wang,<sup>ab</sup> Zhen Li,<sup>ab</sup> and Zhuang Li<sup>\*a</sup>

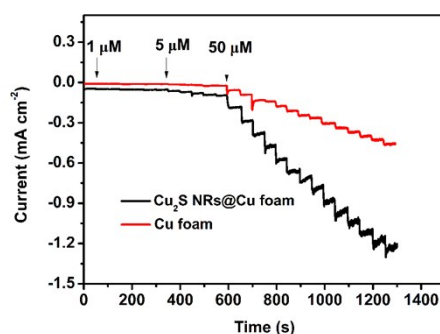
<sup>a</sup>State Key Laboratory of Electroanalytical Chemistry, Changchun Institute of Applied Chemistry, Changchun, 130022, Jilin, P. R. China.

<sup>b</sup>University of Chinese Academy of Sciences, Beijing, 100049, P. R. China

E-mail: zli@ciac.jl.cn; Fax: +86 431 85262057; Tel: +86 431 85262057



**Fig. S1** Typical amperometric response of the Cu foam and Cu<sub>2</sub>S NRs@Cu foam electrode at 0.45 V vs. SCE with the successive addition of glucose from 0.2 μM to 630 μM in 0.1 M NaOH solution.

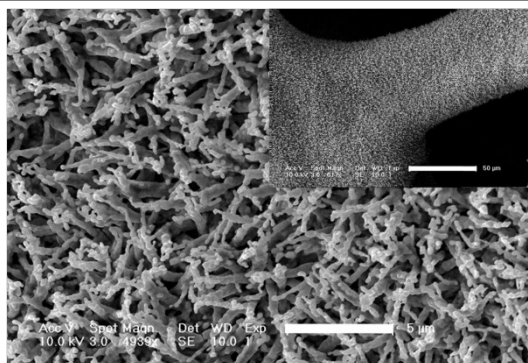


**Fig. S2** Typical amperometric response of the Cu foam and Cu<sub>2</sub>S NRs@Cu foam

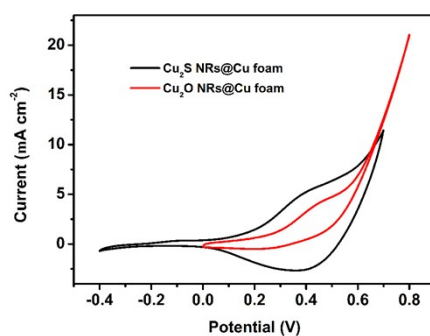
electrode at the potential of -0.2 V vs. SCE with the successive addition of glucose from 1  $\mu\text{M}$  to 730  $\mu\text{M}$  in 0.1 M PBS solution.

**Table S1** The detection of glucose concentration in human serum samples. Each sample was measured in triplicate.

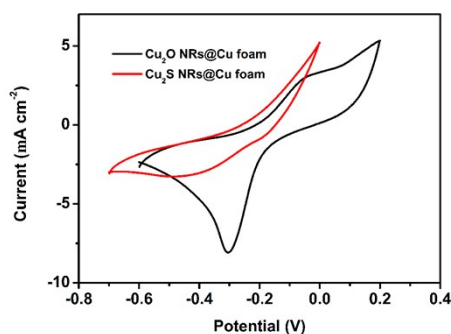
Samples	Cu <sub>2</sub> S NRs@Cu foam	Biochemical analyzer	RSD (n=3) (%)	Recovery(%)
1	6.55	6.70	3.05	97.81
2	10.02	10.10	7.02	99.17



**Fig. S3** SEM images of Cu<sub>2</sub>O NRs@Cu foam.



**Fig. S4** CVs of Cu<sub>2</sub>S NRs@Cu foam and Cu<sub>2</sub>O NRs@Cu foam in the presence of 1 mM H<sub>2</sub>O<sub>2</sub>). Scan rate: 50 mV s<sup>-1</sup>.



**Fig. S5** CVs of Cu<sub>2</sub>S NRs@Cu foam and Cu<sub>2</sub>O NRs@Cu foam in the presence of 1 mM glucose). Scan rate: 50 mV s<sup>-1</sup>.