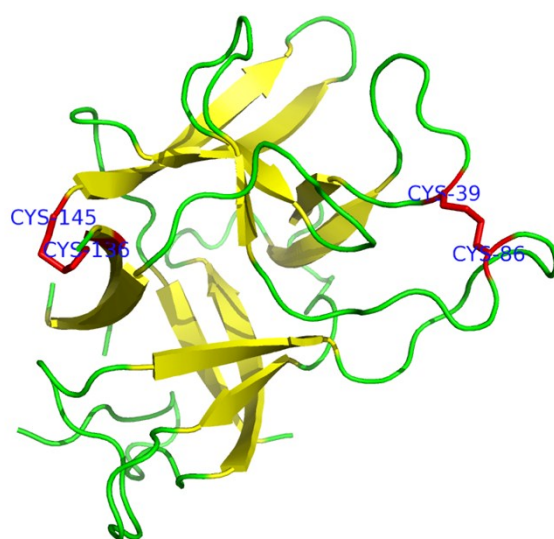
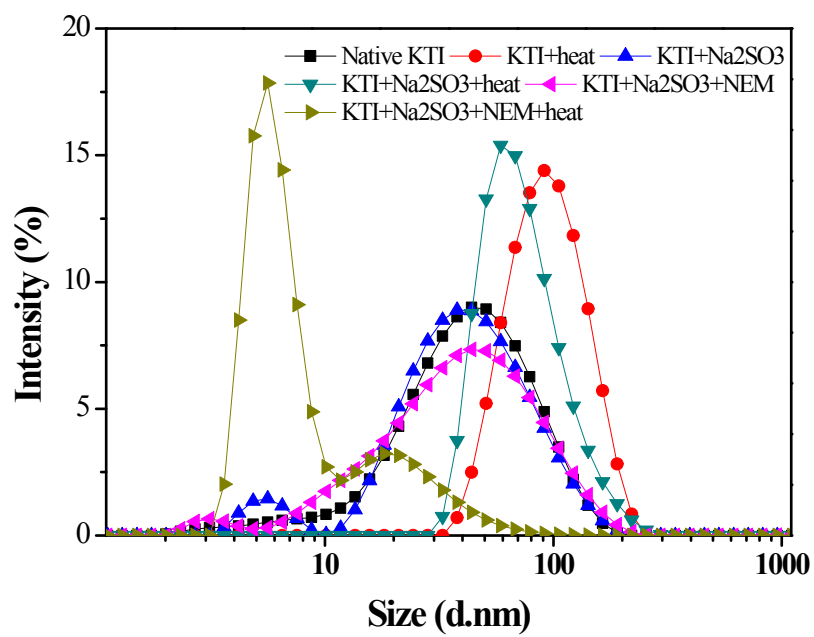


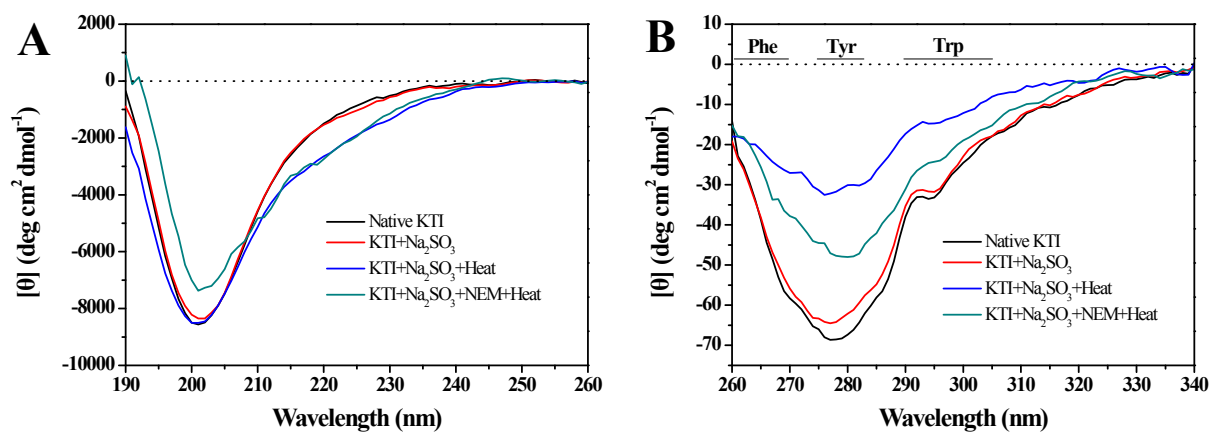
## Support Information



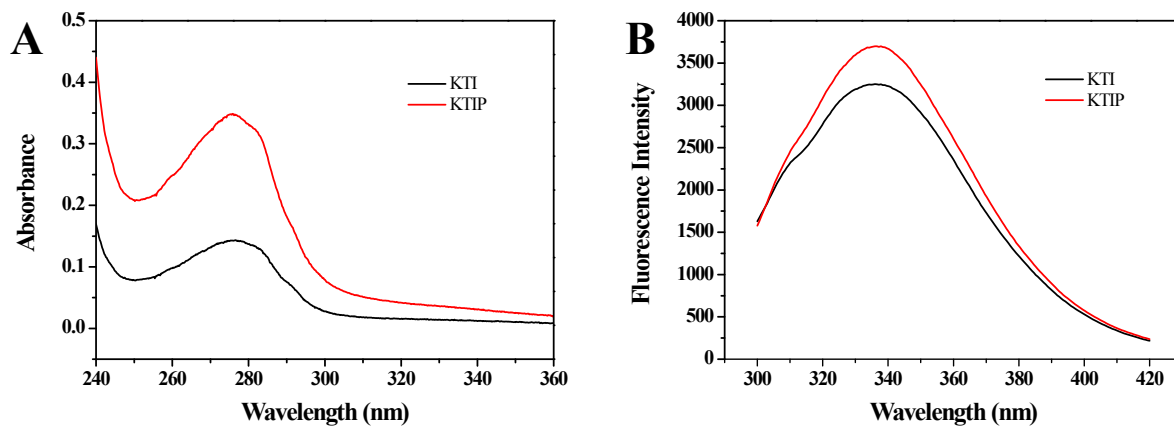
**Figure S1.** Pymol representation of the structure of soybean KTI. The 2.5 Å X-ray structure (PDB ID: 1BA7) was used to generate this diagram. Two disulfide bonds, involving Cys 39-Cys 86 and Cys 136-Cys 145, are shown in a red stick representation, which are solvent-exposed.



**Figure S2.** Size distribution of KTI with various treatments.



**Figure S3.** Circular dichroism (CD) spectra of KTI with various treatments. (A) Far-UV CD spectra, (B) Near-UV CD spectra.



**Figure S4.** UV-Vis spectrum (A) and intrinsic fluorescence (B) of KTIP relative to KTI.

**Table S1** IC<sub>50</sub> values of native curcumin and nanoparticulate curcumin in different tumor cells as assayed by MTT cytotoxicity assay.

Tumor cells	Native curcumin IC <sub>50</sub> values ( $\mu$ M)	Nanoparticulate curcumin IC <sub>50</sub> values ( $\mu$ M)
A549	28.1	19.0
D145	27.0	16.5
HCT-116	25.0	12.0
HepG2	27.5	17.0
K562	26.9	12.9
MCF-7	28.7	12.3