

## Supporting Information

### Polydimethylsiloxane-assisted Alignment Transition from Perpendicular to Parallel of Cylindrical Microdomains in Block Copolymer Films

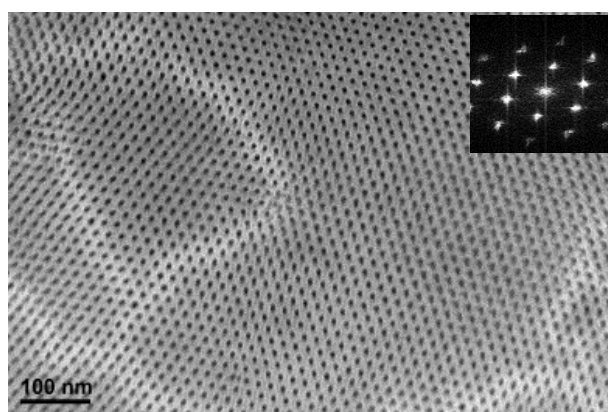
Xiaoxiong Zheng,<sup>a</sup> Zongbo Li,<sup>a</sup> Yongbin Zhao,<sup>b</sup> Ting Qu,<sup>a</sup> Shubo Cao,<sup>a</sup> Pingping Wang,<sup>a</sup> Yayuan Li,<sup>a</sup> Tomokazu Iyoda<sup>c</sup> and Aihua Chen<sup>\*a</sup>

<sup>a</sup>*School of Materials Science and Engineering, Beihang University, No. 37 Xueyuan Road, Haidian District, Beijing, 100191, P. R. China.*

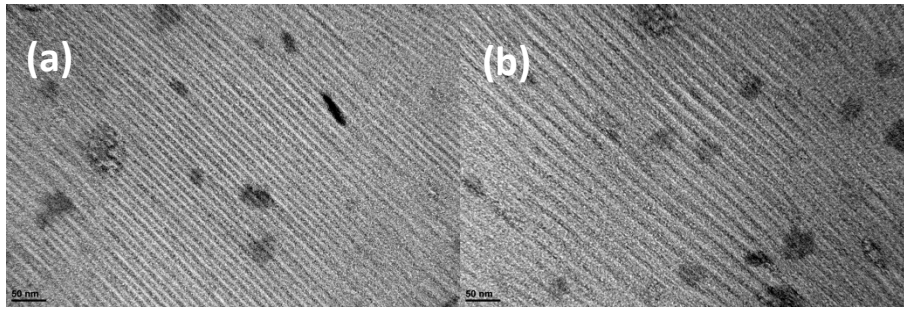
*E-mail: [chenaihua@buaa.edu.cn](mailto:chenaihua@buaa.edu.cn)*

<sup>b</sup>*National Institute of Clean and Low Carbon Energy, Future Science and Technology City, Changping District, Beijing, 102209, P. R. China.*

<sup>c</sup>*Division of Integrated Molecular Engineering, chemical Resources Laboratory, Tokyo Institute of Technology, 4259 Nagatsuta-cho, Modoriku, Yokohama, Kanagawa 226-8503 Japan.*



**Figure S1.** TEM images of perpendicular PEO cylindrical orientation without introducing PDMS. The inset shows the corresponding fast Fourier transform images.



**Figure S2.** TEM images of self-assembled PEO<sub>114</sub>-*b*-PMA(Az)<sub>30</sub> after introducing PDMS ( $M_n=6$  kg/mol, 0.5 wt.%). (a) narrow stripes, (b) wide stripes.